



# City of Flint

## Department of Purchases & Supplies

---

Sheldon A. Neeley

TO: All Proposers  
FROM: Lauren Rowley, Purchasing Manager  
DATE: **November 13, 2023**  
SUBJECT: **Addendum #01** – PROPOSAL #24000525- BUILDING AND SAFETY INSPECTIONS  
DIVISION BUILDING RENOVATIONS

**This addendum has been issued to release the following additional documentation:**

- 1.) The Asbestos Assessment Report from 2017**
- 2.) The New Design drawings/blueprints**

All other bidding terms, requirements, and conditions continue as indicated in the remaining original bid documents.

The Purchasing Manager, Lauren Rowley, is an officer for the City of Flint with respect to this RFP.

**In the submission of their proposal, Proposer must acknowledge receipt of this addendum. Proposer shall acknowledge this addendum by signing and returning one copy of this notice with their submission.**

Company Name: \_\_\_\_\_

Address: \_\_\_\_\_

City / State / Zip: \_\_\_\_\_

Telephone: \_\_\_\_\_ Fax: \_\_\_\_\_ Email: \_\_\_\_\_

Print Name: \_\_\_\_\_ Title: \_\_\_\_\_

Signature: \_\_\_\_\_ Date: \_\_\_\_\_

Thank you,

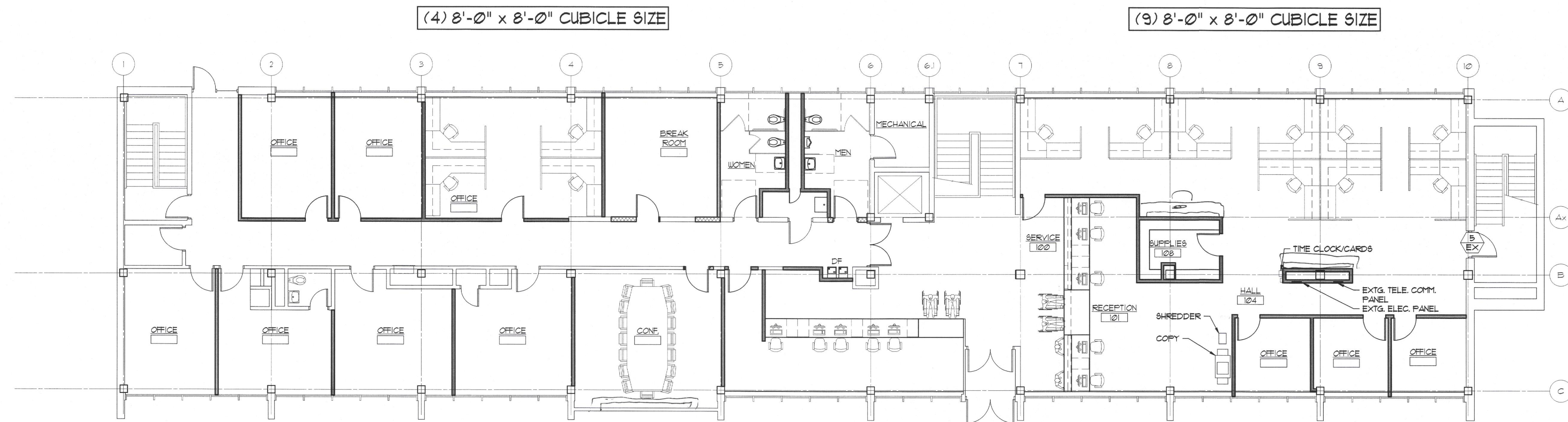
**Lauren Rowley, Purchasing Manager**



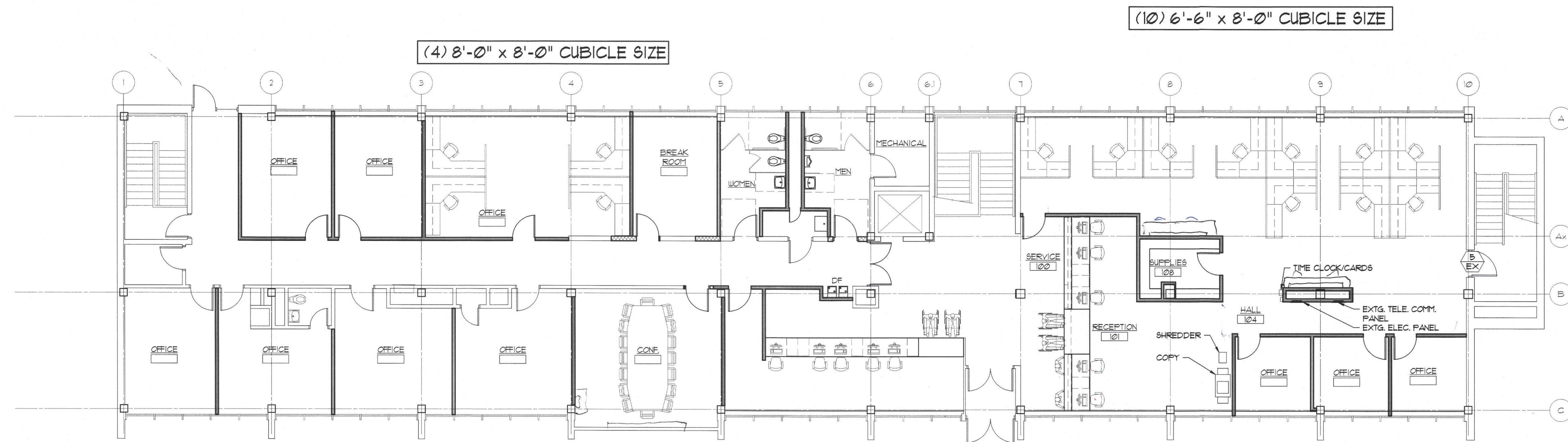
Office Buildout City Hall

David P. Lopez

IMPORTANT: THIS IS A SCHEMATIC LAYOUT, SUBJECT TO REVISION.  
FINAL FLOOR PLAN LAYOUT WILL BE DETERMINED DURING DESIGN.

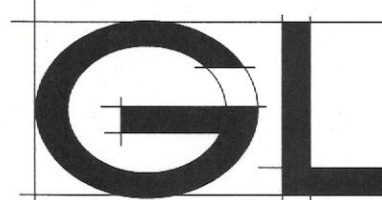


FLOOR PLAN  
SCALE: 1/8" = 1'-0"  
0 4 8



FLOOR PLAN  
SCALE: 1/8" = 1'-0"  
0 4 8

GAZALL, LEWIS & ASSOCIATES ARCHITECTS, INC.  
MOTT FOUNDATION BUILDING  
503 SOUTH SAGINAW STREET SUITE 100  
FLINT, MICHIGAN 48502  
• PHONE (810) 239-4891  
• FAX (810) 239-5191  
• GL@GAZALL-LEWIS.COM  
• WWW.GAZALL-LEWIS.COM



BUILDING INSPECTION DEPARTMENT OFFICE RENOVATIONS  
CITY OF FLINT  
1101 S. SAGINAW ST., FLINT, MICHIGAN

COMMISSION  
2023-19

SHEET

A1.1

EXHIBIT I

X:\2023-19 CITY OF FLINT\2023-19\_AFP.dwg

Mar 13, 2023 9:56am



## Asbestos Survey Report

Flint City Hall, City Hall North Annex, City Hall South Annex  
and Police Station,  
1101 S. Saginaw Street  
Flint, Michigan 48502

Prepared for:

City of Flint  
1101 S. Saginaw Street  
Flint, MI 48502

Prepared by:



ENVIRONMENTAL ENGINEERING INC.  
10312 N. Holly Road  
Holly, Michigan 48442

Global Project No. EE16059

## TABLE OF CONTENTS

1.0	INTRODUCTION .....	1
1.1	PURPOSE OF STUDY .....	1
1.2	SCOPE OF THE INSPECTION.....	1
1.3	BUILDING DESCRIPTION .....	2
2.0	METHODOLOGY .....	2
2.1.	BUILDING INSPECTION.....	2
2.2	SAMPLE COLLECTION AND ANALYSIS .....	3
3.0	RESULTS.....	4
4.0	CONCLUSIONS AND RECOMMENDATIONS.....	8
5.0	LIMITATIONS.....	9
6.0	SIGNATURES .....	10

### FIGURES

Figure 1A - Figures 1O	Functional Spaces and Sample Locations
Figure 2A - Figures 2O	Location of Asbestos Containing Miscellaneous Materials

### TABLES

Table 1A - 1D	Functional Spaces
Table 2A – 2D	Homogeneous Area Summary
Table 3A – 3D	Sample Collection Summary
Table 4A – 4D	Quantities of ACM

### ATTACHMENTS

Attachment 1	Photographs
Attachment 2	Laboratory Analytical Data



## **1.0 INTRODUCTION**

### **1.1 Purpose of Study**

Global Environmental Engineering, Inc. (Global) was retained by the City of Flint, to conduct an asbestos survey of City Hall, City Hall North Annex, City Hall South Annex and the City of Flint Police Station located in Flint, Michigan. The purpose of the study was to assess, locate and quantify the buildings for suspected asbestos containing building materials (ACBMs).

The survey was conducted as required to meet the requirements of 40 CFR, Part 61, Subpart M, National Emissions Standards for Hazardous Air Pollutants (NESHAP) and Part 305, the Michigan Occupational Safety and Health Administration (MIOSHA) Asbestos Standards for General Industry, (29 CFR 1910.1001) and Part 602. The MIOSHA Asbestos Standards for Construction (29 CFR 1926.1101), requires that all building facilities (excluding residential owner occupied homes) constructed prior to 1981, where employees may enter, work, or contact building materials must be inspected for ACBM or presumed asbestos containing material (PACM). The survey and inspection must adhere to the provisions of the Asbestos Hazard Emergency Response Act (AHERA) program and be performed by a Michigan accredited asbestos building inspector or Certified Industrial Hygienist (CIH). The building survey must take steps to identify and document the presence, location, and quantity of all “suspect” ACBM and implement a regular program to monitor, repair, or remove Asbestos Containing Materials (ACM) that may become airborne. The goal of AHERA is to prevent building occupants from being exposed to asbestos above the OSHA standards.

### **1.2 Scope of the Inspection**

The inspection consisted of a complete assessment of the four buildings to identify suspected ACBMs that exist within the building; the location that each material was used and the approximate quantities of each material when possible. Each suspect material identified during the survey was sampled and analyzed in accordance with 40 CFR, Part 763, Subpart E, Toxic Substance Control Act to determine the asbestos content. Destructive sampling procedures were not utilized during the completion of this survey.

Each suspect ACBM was physically assessed by the inspectors to determine if the material was friable or non-friable. Friable materials are defined as materials that when dry may be crumbled or reduced to powder using hand pressure and thus release asbestos fibers. Samples of both friable and non-friable ACBMs were collected for laboratory analysis. Typical building materials that may contain asbestos include drywall, floor tiles, roofing felt and shingles, ceiling tiles, insulation, pipe insulation, and duct insulation. Samples were collected in a random manner in order to sufficiently determine if the materials were ACM.

### **1.3 Building Description**

The Flint City Hall Buildings are located at 1101 South Saginaw Street, Flint, Michigan. The survey included the basement to third floor of the City Hall Building (109,182 Square feet), the basement to second floor of the City Hall North Annex (22,176 Square feet), the sub-basement to street level of the City Hall South Annex (18,242 Square feet), the Dome (3,288 Square feet) and the Police Department Building (47,070 Square feet).

## **2.0 METHODOLOGY**

### **2.1. Building Inspections**

Between December 12, 2016 and January 12, 2017, Julie Robbins and Desiree Yaksic, both certified asbestos building inspectors from Global met with Mr. Lee Osborne, a representative of City of Flint. The building inspection began in the sub-basement of City Hall South Building. The building inspection included a visual inspection of each functional space of the building. A functional space is defined as a room or group of rooms, (including crawl spaces or the space between a dropped ceiling and the floor or roof deck above). Suspect materials observed in the functional spaces were categorized into groups of materials identified as homogeneous areas.

A complete list of the functional spaces identified can be found in **Table 1A – 1D** and is illustrated on **Figures 1A – 1O**. A list of specific homogeneous areas is summarized on **Tables 2A – 2D**. Photographs of sampled materials are included in **Attachment 1**.



The locations of the materials listed on the Homogeneous Area log on **Tables 2A – 2D** were based on the results of the physical inspection of the building. At the time of the inspection many of the surrounding building materials were also suspect ACBMs and were not damaged. Therefore, the quantities and locations of materials were confirmed when possible and estimated when not possible.

## **2.2 Sample Collection and Analysis**

Samples were classified as miscellaneous materials (MM), Surfacing Material (SM) or Thermal System Insulation (TSI). A Michigan Accredited Asbestos Inspector collected representative samples of each suspect ACBM. Each sample was placed into a sealed bag and labeled. A description of the material and location of the sample collected were recorded in the field notes.

### **City Hall Main Building**

A total of 75 homogeneous areas were identified during the building inspection. Samples were collected from all 74 homogeneous areas based on the type of material and the friability of the material. A total of 274 samples were collected of suspect friable and non-friable ACBM identified during the inspection. Descriptions and the location of each sample collected during the inspection are summarized in **Table 3A** and illustrated on **Figures 1A – 1E**.

### **City Hall South Building Annex**

A total of 37 homogeneous areas were identified during the building inspection. Samples were collected from all 36 homogeneous areas based on the type of material and the friability of the material. A total of 145 samples were collected of suspect friable and non-friable ACBM identified during the inspection. Descriptions and the location of each sample collected during the inspection are summarized in **Table 3B** and illustrated on **Figures 1F– 1H**.

### **City Hall North Building Annex**

A total of 32 homogeneous areas were identified during the building inspection. Samples were collected from all 31 homogeneous areas based on the type of material and the

friability of the material. A total of 124 samples were collected of suspect friable and non-friable ACM identified during the inspection. Descriptions and the location of each sample collected during the inspection are summarized in **Table 3C** and illustrated on **Figures 1I-1K**.

#### **Police Department**

A total of 46 homogeneous areas were identified during the building inspection. Samples were collected from all 45 homogeneous areas based on the type of material and the friability of the material. A total of 174 samples were collected of suspect friable and non-friable ACM identified during the inspection. Descriptions and the location of each sample collected during the inspection are summarized in **Table 3D** and illustrated on **Figures 1L – 1O**.

Each sample of suspect ACM collected was analyzed for asbestos content using polarized light microscopy (PLM) by a NVLAP (National Voluntary Laboratory Accreditation Program) and NIST accredited laboratory in accordance with 40 CFR Ch. I (1-1-87 Edition) Part 763, Subpart F, Appendix A, pp. 293-299. Asbestos containing materials are defined as materials that contain greater than one percent (>1%) asbestos.

Each sample collected for analysis was delivered to Apex Research in Whitmore Lake, Michigan. Up to seven samples were collected for each of the suspect ACMs. The lab was instructed to stop analyzing similar materials when a suspect material was determined to be asbestos containing. This was done to reduce the analytical cost for this project.

### **3.0 RESULTS**

#### **City Hall Main Building**

A total of 74 different homogeneous areas were sampled during the inspection of the building. A total of 274 samples were collected from the 74 homogenous areas for laboratory analysis. The locations of the samples collected and the locations of the functional spaces where the materials were identified in the building are illustrated on **Figure 1A – 1E**. Nine of the 74 friable and non-friable materials tested were determined to contain asbestos at concentrations greater than one



percent. The analytical results are summarized on **Table 3A** and the ACBM materials are identified and quantified on **Table 4A**. Quantities that are listed are estimates only, it is the contractor's responsibility to verify all amounts of ACBM during the bidding processes. A copy of the laboratory results is included in **Attachment 2**.

The materials included:

- 12" White Floor Tile with Tan Streaks.
- 9" Brown Floor Tile
- 12" Dark Gray Floor tile
- 12" White Floor Tile with Brown Streaks
- 9" Dark Gray Floor Tile with Black and White Streaks
- 9" Light Gray Floor Tile
- Fittings on Canvas Covered Fiberglass Runs
- Mill board Pipe Insulation Runs
- Mudded Fittings on Mill board Pipe Insulation Runs

The locations and **estimated quantities** of materials identified as ACBM are listed on **Table 4A**. **Figures 2A – 2E** illustrate locations of non-friable asbestos containing floor tiles. The asbestos containing mudded fittings and Mill board pipe insulation are located above the drop ceiling and in pipe chases throughout the building.

#### **City Hall South Building Annex**

A total of 36 different homogeneous areas were sampled during the inspection of the building. A total of 145 samples were collected from the 36 homogenous areas for laboratory analysis. The locations of the samples collected and the locations of the functional spaces where the materials were identified in the building are illustrated on **Figure 1F – 1H**. Nine of the 36 friable and non-friable materials tested were determined to contain asbestos at concentrations greater than one percent. The analytical results are summarized on **Table 3B** and the ACBM materials are identified and quantified on **Table 4B**. Quantities that are listed are estimates only, it is the contractor's responsibility to verify all amounts of ACBM during the bidding processes. A copy of the laboratory results is included in **Attachment 2**.

The materials included:

- 9" Gray Floor Tile

- 9" Brown Floor Tile with Streaks
- Pink Floor Tile – Under Carpet
- 9" Tan Floor Tile
- 9" Gray Floor Tile with Tan Streaks
- Mill board Pipe Insulation Runs
- Mudded Fittings on Fiberglass Runs
- Mudded Fittings on Mill board Pipe Insulation Runs
- 6" Mill board Pipe Insulation Run

The locations and **estimated quantities** of materials identified as ACM are listed on **Table 4B**. **Figures 2F – 2H** illustrate locations of non-friable asbestos containing floor tiles. The asbestos containing mudded fittings and Mill board pipe insulation are located above the drop ceiling and in pipe chases throughout the building.

#### City Hall North Building Annex

A total of 31 different homogeneous areas were sampled during the inspection of the building. A total of 145 samples were collected from the 31 homogenous areas for laboratory analysis. The locations of the samples collected and the locations of the functional spaces where the materials were identified in the building are illustrated on **Figure 1I – 1K**. Four of the 31 friable and non-friable materials tested were determined to contain asbestos at concentrations greater than one percent. The analytical results are summarized on **Table 3B** and the ACBM materials are identified and quantified on **Table 4B**. **Quantities that are listed are estimates only, it is the contractor's responsibility to verify all amounts of ACBM during the bidding processes.** A copy of the laboratory results is included in **Attachment 2**.

The materials included:

- Mill board Pipe Insulation Runs (4", 6" & 10" pipes)
- Mudded Fittings on Mill board Pipe Insulation Runs
- Boiler Lagging on Expansion Tank
- Mudded Fittings on Fiberglass Runs



The locations and **estimated quantities** of materials identified as ACM are listed on **Table 4B**. **Figures 2I – 2K** illustrate locations of non-friable asbestos containing floor tiles. The asbestos containing mudded fittings and Mill board pipe insulation are located above the drop ceiling and in pipe chases throughout the building.

#### **Police Department**

A total of 45 different homogeneous areas were identified during the inspection of the building. A total of 174 samples were collected from the 45 homogenous areas for laboratory analysis. The locations of the samples collected and the locations of the functional spaces where the materials were identified in the building are illustrated on **Figure 1L – 1O**. 13 of the 45 friable and non-friable materials tested were determined to contain asbestos at concentrations greater than one percent. The analytical results are summarized on **Table 3B** and the ACBM materials are identified and quantified on **Table 4B**. **Quantities that are listed are estimates only, it is the contractor's responsibility to verify all amounts of ACBM during the bidding processes.** A copy of the laboratory results is included in **Attachment 2**.

The materials included:

- 9" Gray Floor Tile with White Streaks
- Black Mastic under 12" White Floor Tile with Gray and White Specs
- 9" Light Brown Floor Tile with White and Black Streaks
- 9" Dark Gray Floor Tile with White and Pink Streaks
- 9" Light Gray Floor Tile with White and Black Streaks
- 9" Pinkish Brown Floor Tile with Gray Specs
- 12" Tan Floor Tile with Brown Streaks
- 2' x 4' White Ceiling Tile with Holes and Squiggly Lines
- 2'x 4' White Ceiling Tile, Bumpy with Holes
- Brown Glue Pods on 1' x 1' Ceiling Tiles
- Mill board Pipe Insulation Runs
- Mudded Fittings on Mill board Pipe Insulation Runs
- Mudded Fittings on Fiberglass Runs

The locations and **estimated quantities** of materials identified as ACM are listed on **Table 4B**. **Figures 2L – 2O** illustrate locations of non-friable asbestos containing floor tiles. The asbestos

containing mudded fittings and Mill board pipe insulation are located above the drop ceiling and in pipe chases throughout the building.

#### 4.0 CONCLUSIONS AND RECOMMENDATIONS

The results of the asbestos survey identified friable and non-friable ACBMs within the buildings. The friable ACBMs consisted of 2' x 4' ceiling tiles, mill board pipe insulation straight runs, mudded fittings on both mill board and fiberglass runs and boiler lagging. Physical examination of these materials identified areas of damaged/exposed ends, damaged or missing fitting insulation; and damaged or missing canvas wrap and is considered damaged to significantly damaged. Federal and state regulations require that anyone disturbing asbestos containing materials are properly trained, certified and have the required respiratory protection and medical surveillance.

Several floor tiles were identified throughout the buildings during the survey. All but two locations, (FS20 in the Main City Hall – Basement Level and FS48 in the Police Department Building – Street Level) are considered non-friable. Floor Tile in these two locations are significantly damaged and broken. Some of the floor tiles are located beneath carpet and pose limited exposure to employees. Activities that will result in damage to the tile should be completed by an asbestos trained employee or contractor. Where tiles are exposed, care should be taken during routine operations (ie., stripping and waxing) to minimize damage to the tiles.

If damaged materials are identified, they should be properly repaired or removed by a licensed asbestos contractor in accordance with all applicable federal, state and local regulations.

##### Recommendations:

The friable ACBMs are located above drop ceilings, in pipe chases, in the boiler room or in the basement of the police department which are not common work spaces. Caution labels should be attached to areas containing friable ACBM. If the area located above the drop ceiling is to be renovated or disturbed in areas that ACBM were identified, Global recommends contracting a trained and licensed asbestos abatement contractor to remove, encapsulate or enclose all friable ACBM. Contractors and/or reviewers of this report should contact the building owner as to renovation plans including questions pertaining to removal and encapsulation for the structure.



All renovation activities must be conducted in compliance with applicable regulations, standards and practices. If ACBM are left in the building they should be incorporated into an existing Operation and Maintenance (O&M) Program or an O&M Program should be developed. In addition, pursuant to Part 305, Asbestos for General Industry Standard, section (j)(2)(iii), housekeeping employees must be advised of the building components they maintain, which may expose them to asbestos. Section (j) (7)(iv) also requires an employer to provide asbestos awareness training to the custodial and/or janitorial staff. **Quantities that are listed are estimates only, it is the contractor's responsibility to verify all amounts of ACBM during the bid process.**

For the purpose of this inspection fire doors and door frames, elevator brake shoes, curtains in the auditorium, panels behind the radiators and roofing materials were noted throughout the buildings, because of the destructive nature of sample collection and the resulting risk of integrity to the materials, Global did not sample the doors, door frames, elevator brake shoes, auditorium curtains, paneling or roofing and they should be assumed ACBM unless sampled at a later time.

## 5.0 LIMITATIONS

The asbestos survey was completed to assess and quantify ACBMs. The survey was conducted using nondestructive sampling. Global has made reasonable efforts to identify and quantify materials, however, if new homogenous materials are identified in locations previously unseen or inaccessible areas such as wall voids, pipe chases and under other building materials, the material should not be disturbed and assumed positive for asbestos until it can be sampled and analyzed.

## 6.0 SIGNATURES

This report was prepared based on the site conditions that existed at the time of the inspection, sample collection, and the laboratory analytical results.

Prepared by: Julie M. Robbins  
Julie M. Robbins, Michigan Certified Asbestos Inspector  
Michigan Accreditation Number A35947

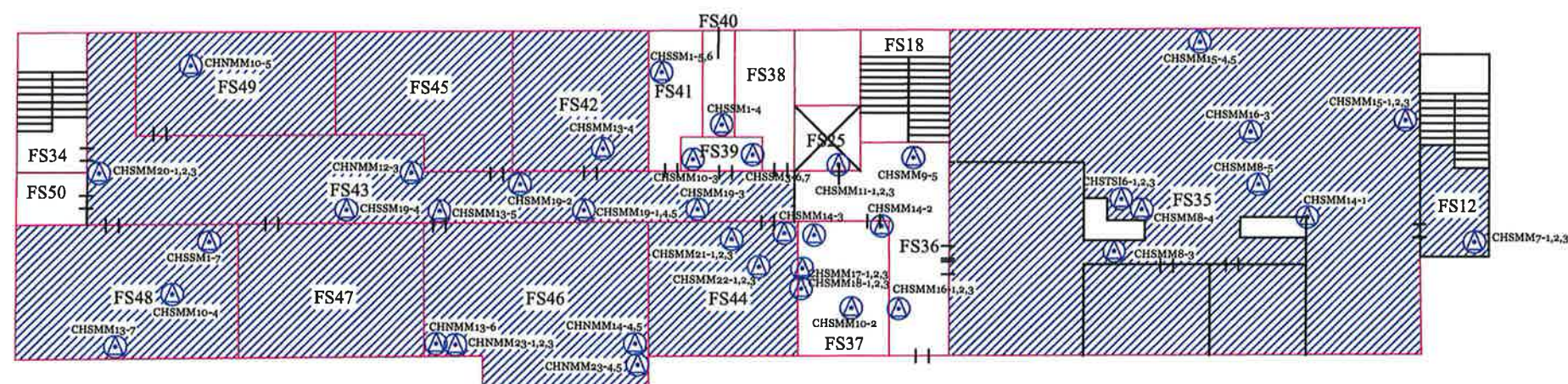
Prepared by: Desiree Yaksic  
Desiree Yaksic, Michigan Certified Asbestos Inspector  
Michigan Accreditation Number A45049

FIGURES 1  
Functional Space/Sample Locations









 Asbestos Containing Materials



FIGURE 2-F  
Functional Space Diagram Including Sample Locations

City of Flint  
City Hall South Building Annex  
Street Level  
Flint, MI

SCALE  
0 20'  
1" = 20'

DRN BY: MM DATE: 2/27/2017

FILE NAME: CITYHALLSOUTHBUILDINGSTREETLEVELFIG2-F



TALBES 1A -1D  
Functional Spaces



**Table 1B**  
**Functional Spaces**  
**City Hall - South Building Annex**

File No. EE16059

Functional Space Description		Size (feet)		H
		L	W	
	<b>Sub Basement - South Building</b>			
FS1	Womens Restroom (Room 1)	8'	8'	12'
FS2	Womens Restroom (Room 2)	14'	8'	12'
FS3	Pipe Chase	14'	2'	12'
FS4	Sub Basement Hallway	5'	9'	12'
	Sub Basement Hallway	9'	11'	12'
	Sub Basement Hallway	16'	4'	12'
FS5	Stairwell	17'	5'	12'
FS6	Storage Room	14'	8'	12'
	Storage Room	8'	9'	12'
	Storage Room	12'	8'	12'
FS7	Basement Under Dome	-	-	12'
FS8	Men's Restroom	14'	8'	12'
FS9	Janitor's Closet - No Access	-	-	12'
FS10	Electrical Closet	6'	15'	12'
FS11	Storage Room - No Access	-	-	12'
	<b>Lower Level - South Building</b>			
FS12	East Stairwell	21'	9'	24'
FS13	No Access	-	-	12'
FS14	Hallway	6'	52'	12'
FS15	No Access	-	-	12'
FS16	Office	17'	12'	12'
FS17	Office	17'	28'	12'
FS18	Hallway and Stairwell	6'	98'	12'
	Hallway and Stairwell	23'	20'	24'
FS19	Breezeway/Entrance to Dome	43'	14'	12'
FS20	Women's Restroom	3'	5'	12'
	Women's Restroom	12'	8'	12'
FS21	Storage Closet	3'	3'	12'
FS22	Janitor's Closet	3'	6'	12'
FS23	Pipe Chase	14'	2'	12'
FS24	Men's Restroom	3'	5'	12'
	Men's Restroom	14'	8'	12'
FS25	Elevator	4'	4'	12'
FS26	Mechanical Room	-	-	12'
FS27	Dept. of Community & Economic Development	17'	100'	12'
FS28	Dept of Community & Econ. Dev. Office	17'	24'	12'

**Table 1B**  
**Functional Spaces**  
**City Hall - South Building Annex**

File No. EE16059

Functional Space Description		Size (feet)		H
		L	W	
FS29	Engineering	17'	50'	12'
FS30	Engineering Closet	5'	5'	12'
FS31	Engineering Bathroom	5'	5'	12'
FS32	Door #1 - No Access	-	-	12'
FS33	Hallway - attached to FS18	18'	6'	12'
FS34	West Stairwell	18'	9'	24'
<b>Main Level - South Building</b>				
FS35	Building & Safety Offices	41'	62'	12'
FS36	Hallway	4'	11'	12'
	Hallway	6'	20'	12'
	Hallway	12'	7'	12'
	Hallway	5'	7'	12'
FS37	Lunch Room	17'	12'	12'
FS38	Men's Restroom	3'	5'	12'
	Men's Restroom	14'	8'	12'
FS39	Janitors Closet	3'	10'	12'
FS40	Pipe Chase	14'	2'	12'
FS41	Women's Restroom	4'	4'	12'
	Women's Restroom	13'	8'	12'
FS42	Office	17'	11'	12'
FS43	Hallway	6'	40'	12'
	Hallway	11'	32'	12'
	Hallway	8'	20'	12'
	Hallway	16'	6'	12'
FS44	Office	17'	19'	12'
FS45	Office	17'	10'	12'
	Office	10'	16'	12'
FS46	Conference Room	18'	28'	12'
FS47	Office	17'	23'	12'
FS48	Conference Room/Office/Restroom	17'	24'	12'
FS49	Office	17'	12'	12'
FS50	Janitors Closet	5'	8'	12'

TABLES 2A – 2D  
Homogeneous Area Summary

**Table 2B**  
**Homogeneous Area Summary**  
**City Hall - South Building Annex**

File No. EE16059

HA	Description	Locations (Functional Spaces)	% Asbestos	Samples Collected
<b>Miscellaneous Materials</b>				
<b>CHSMM1</b>	<b>9" Gray Floor Tile with Mastic</b>	<b>FS1</b>	<b>Chrysotile 10% Mastic ND</b>	<b>3</b>
CHSMM2	4" Black Molding with Glue	FS1, FS10, FS12, FS13, FS14, FS15, FS16, FS17, FS18, FS20, FS24, FS33, FS34, FS36, FS38, FS39, FS41, FS50	ND	3
CHSMM3	2' x 4' White Ceiling Tile with Perforations	FS16	ND	3
CHSMM4	Black Mastic	FS4	ND	3
CHSMM5	Brown Adhesive	FS4, FS21	ND	3
CHSMM6	Brown Fiberboard	FS7	ND	3
<b>CHSMM7</b>	<b>9" Brown Floor Tile with Cream Streaks &amp; Mastic</b>	<b>FS12</b>	<b>Chrysotile 10% Mastic ND</b>	<b>3</b>
CHSMM8	Drywall Panels	FS17, FS35,	ND	5
CHSMM9	12" White Floor Tile with Gray Streaks and Mastic	FS13, FS18, FS20, FS21, FS24, FS32, FS33, FS34, FS36, FS38, FS41, FS43, FS50	ND	5
CHSMM10	2' X 4' White Ceiling Tile with Holes and Perforations	FS24, FS37, FS39, FS42, FS43, FS45, FS46, FS47, FS48, FS49	ND	5
CHSMM11	18" Gray Floor Tile	FS25	ND	3
CHSMM12	6" Black Molding	FS27, FS28, FS42, FS43, FS44, FS45, FS46, FS47, FS48	ND	3
CHSMM13	Yellow Carpet Adhesive	FS12, FS13, FS14, FS16, FS17, FS27, FS28, FS42, FS43, FS44, FS45, FS46, FS47, FS48, FS49	ND	7
CHSMM14	Drywall with Joint Compound	FS27, FS37, FS44, FS46	ND	5
<b>CHSMM15</b>	<b>Pink Floor Tile with Black Mastic</b>	<b>FS35</b>	<b>Chrysotile 10% Mastic ND</b>	<b>5</b>
CHSMM16	Tan Textured Vinyl Drywall	FS36	ND	3
CHSMM17	12" Blue Floor Tile with Mastic	FS37	ND	3
CHSMM18	4" Gray Molding	FS37	ND	3
CHSMM19	Pink Vinyl Drywall	FS43	ND	5
CHSMM20	White Vinyl Drywall	FS43	ND	3
CHSMM21	2' x 2' White Ceiling Tile with Perforations	FS44	ND	3
CHSMM22	Pink Fuzzy Wall Covering	FS44	ND	3
<b>CHSMM23</b>	<b>9" Tan Floor Tile with Mastic</b>	<b>Throughout 2nd Floor (Under Carpets)</b>	<b>Chrysotile 10% Mastic ND</b>	<b>7</b>
CHSMM24	2' x 4' White Ceiling Tile with Small Holes	FS15	ND	3
<b>CHSMM25</b>	<b>9" Gray Floor Tile with Tan Streaks/Mastic</b>	<b>FS51, FS52</b>	<b>Chrysotile 10% Mastic ND</b>	<b>3</b>
CHSMM26	1' x 1' White Ceiling Tile with Holes	FS51	ND	3
CHSMM27	9" Green Floor Tile with Mastic	FS29	ND	
<b>Surfacing Materials</b>				
CHSSM1	Plaster	Throughout	ND	7
CHSSM2	Pink Caulk	FS22	ND	3
CHSSM3	Brick Mortar	Throughout	ND	7
CHSSM4	Spray On Ceiling Insulation	FS51	ND	7
<b>Thermal System Insulation</b>				
<b>CHSTIS1</b>	<b>Mill board Runs</b>	<b>Throughout</b>	<b>Chrysotile 15%</b>	<b>3</b>
<b>CHSTIS2</b>	<b>Mudded Fittings on Fiberglass Runs</b>	<b>Throughout</b>	<b>Chrysotile 50%</b>	<b>3</b>
<b>CHSTIS3</b>	<b>Mill board Run Fittings</b>	<b>Throughout</b>	<b>Chrysotile 35%</b>	<b>3</b>
CHSTIS4	Canvas Wrap over Fiberglass Duct Work	FS6, FS7, FS26	ND	7
<b>CHSTIS5</b>	<b>Expansion Joints</b>	<b>FS7, FS26</b>	<b>Assumed</b>	<b>0</b>
<b>CHSTIS6</b>	<b>6" Mill board Run</b>	<b>FS 35 (above drop ceiling), likely in wall voids, pipe chases, above drop ceilings</b>	<b>Chrysotile 20%</b>	<b>3</b>

Samples analyzed in accordance with U.S. EPA Method - 600/M4-82-020

ND - Not Detected

Asbestos containing materials are defined as materials that contain greater than one percent (>1%) asbestos.

Detection Limit: 1 percent by weight based on calibrated area visual estimates

 Indicates sample contains asbestos >1%.

TABLES 3A – 3D  
Sample Collection Summary



Tat 3  
Sample Collection Summary  
City Hall - South Building Annex

File 16059

Sample I.D	DCHSDescription	Date Sampled	Functional Space #	% ACM	Asbestos Containing
CHSMM1-1	9" Gray Floor Tile with Mastic	12/21/2016	FS1	Chrysotile 10% Mastic ND	Floor Tile - Yes Mastic - No
CHSMM1-2	9" Gray Floor Tile with Mastic	12/21/2016	FS1	NA/ Mastic ND	Floor Tile - Yes Mastic - No
CHSMM1-3	9" Gray Floor Tile with Mastic	12/21/2016	FS1	NA/ Mastic ND	Floor Tile - Yes Mastic - No
CHSMM2-1	4" Black Molding with Glue	12/21/2016	FS1	ND	No
CHSMM2-2	4" Black Molding with Glue	12/21/2016	FS22	ND	No
CHSMM2-3	4" Black Molding with Glue	12/21/2016	FS33	ND	No
CHSMM3-1	2' x 4' White Ceiling Tile with Perforations	12/21/2016	FS16	ND	No
CHSMM3-2	2' x 4' White Ceiling Tile with Perforations	12/21/2016	FS16	ND	No
CHSMM3-3	2' x 4' White Ceiling Tile with Perforations	12/21/2016	FS16	ND	No
CHSMM4-1	Black Mastic	12/21/2016	FS4	ND	No
CHSMM4-2	Black Mastic	12/21/2016	FS4	ND	No
CHSMM4-3	Black Mastic	12/21/2016	FS4	ND	No
CHSMM5-1	Brown Adhesive	12/21/2016	FS4	ND	No
CHSMM5-2	Brown Adhesive	12/21/2016	FS4	ND	No
CHSMM5-3	Brown Adhesive	12/21/2016	FS21	ND	No
CHSMM6-1	Brown Fiberboard	12/21/2016	FS7	ND	No
CHSMM6-2	Brown Fiberboard	12/21/2016	FS7	ND	No
CHSMM6-3	Brown Fiberboard	12/21/2016	FS7	ND	No
CHSMM7-1	9" Brown Floor Tile with Cream Streaks & Mastic	12/21/2016	FS12	Chrysotile 10% Mastic ND	Floor Tile - Yes Mastic - No
CHSMM7-2	9" Brown Floor Tile with Cream Streaks & Mastic	12/21/2016	FS12	NA/ Mastic ND	Floor Tile - Yes Mastic - No
CHSMM7-3	9" Brown Floor Tile with Cream Streaks & Mastic	12/21/2016	FS12	NA/ Mastic ND	Floor Tile - Yes Mastic - No
CHSMM8-1	Drywall Panels	12/21/2016	FS17	ND	No
CHSMM8-2	Drywall Panels	12/21/2016	FS13	ND	No
CHSMM8-3	Drywall Panels	12/21/2016	FS35	ND	No
CHSMM8-4	Drywall Panels	12/21/2016	FS35	ND	No

**Tal 3**  
**Sample Collection Summary**  
**City Hall - South Building Annex**

File 16059

Sample I.D	DCHScription	Date Sampled	Functional Space #	% ACM	Asbestos Containing
CHSMM8-5	Drywall Panels	12/21/2016	FS35	ND	No
CHSMM9-1	12" White Floor Tile with Gray Streaks and Mastic	12/21/2016	FS18	ND	No
CHSMM9-2	12" White Floor Tile with Gray Streaks and Mastic	12/21/2016	FS24	ND	No
CHSMM9-3	12" White Floor Tile with Gray Streaks and Mastic	12/21/2016	FS33	ND	No
CHSMM9-4	12" White Floor Tile with Gray Streaks and Mastic	12/21/2016	FS21	ND	No
CHSMM9-5	12" White Floor Tile with Gray Streaks and Mastic	12/21/2016	FS36	ND	No
CHSMM10-1	2' X 4' White Ceiling Tile with Holes and Perforations	12/21/2016	FS24	ND	No
CHSMM10-2	2' X 4' White Ceiling Tile with Holes and Perforations	12/21/2016	FS37	ND	No
CHSMM10-3	2' X 4' White Ceiling Tile with Holes and Perforations	12/21/2016	FS39	ND	No
CHSMM10-4	2' X 4' White Ceiling Tile with Holes and Perforations	12/21/2016	FS48	ND	No
CHSMM10-5	2' X 4' White Ceiling Tile with Holes and Perforations	12/21/2016	FS49	ND	No
CHSMM11-1	18" Gray Floor Tile	12/21/2016	FS25	ND	No
CHSMM11-2	18" Gray Floor Tile	12/21/2016	FS25	ND	No
CHSMM11-3	18" Gray Floor Tile	12/21/2016	FS25	ND	No
CHSMM12-1	6" Black Molding/Glue	12/21/2016	FS27	ND	No
CHSMM12-2	6" Black Molding/Glue	12/21/2016	FS28	ND	No
CHSMM12-3	6" Black Molding/Glue	12/21/2016	FS43	ND	No
CHSMM13-1	Yellow Carpet Adhesive	12/21/2016	FS12	ND	No
CHSMM13-2	Yellow Carpet Adhesive	12/21/2016	FS16	ND	No
CHSMM13-3	Yellow Carpet Adhesive	12/21/2016	FS12	ND	No
CHSMM13-4	Yellow Carpet Adhesive	12/21/2016	FS42	ND	No
CHSMM13-5	Yellow Carpet Adhesive	12/21/2016	FS43	ND	No
CHSMM13-6	Yellow Carpet Adhesive	12/21/2016	FS46	ND	No
CHSMM13-7	Yellow Carpet Adhesive	12/21/2016	FS48	ND	No
CHSMM14-1	Drywall with Joint Compound	12/21/2016	FS35	ND	No

Tal 3  
Sample Collection Summary  
City Hall - South Building Annex

File 16059

Sample I.D	DCHScription	Date Sampled	Functional Space #	% ACM	Asbestos Containing
CHSMM14-2	Drywall with Joint Compound	12/21/2016	FS37	<1% Joint Compound/ Drywall ND	No
CHSMM14-3	Drywall with Joint Compound	12/21/2016	FS44	ND	No
CHSMM14-4	Drywall with Joint Compound	12/21/2016	FS46	ND	No
CHSMM14-5	Drywall with Joint Compound	12/21/2016	FS46	ND	No
CHSMM15-1	Pink Floor Tile with Black Mastic	12/21/2016	FS35	Chrysotile 10% Mastic ND	Floor Tile - Yes Mastic - No
CHSMM15-2	Pink Floor Tile with Black Mastic	12/21/2016	FS35	NA/ Mastic ND	Floor Tile - Yes Mastic - No
CHSMM15-3	Pink Floor Tile with Black Mastic	12/21/2016	FS35	NA/ Mastic ND	Floor Tile - Yes Mastic - No
CHSMM15-4	Pink Floor Tile with Black Mastic	12/21/2016	FS35	NA/ Mastic ND	Floor Tile - Yes Mastic - No
CHSMM15-5	Pink Floor Tile with Black Mastic	12/21/2016	FS35	NA/ Mastic ND	Floor Tile - Yes Mastic - No
CHSMM16-1	Tan Textured Vinyl Drywall	12/21/2016	FS36	ND	No
CHSMM16-2	Tan Textured Vinyl Drywall	12/21/2016	FS36	ND	No
CHSMM16-3	Tan Textured Vinyl Drywall	12/21/2016	FS36	ND	No
CHSMM17-1	12" Blue Floor Tile with Mastic	12/21/2016	FS37	ND	No
CHSMM17-2	12" Blue Floor Tile with Mastic	12/21/2016	FS37	ND	No
CHSMM17-3	12" Blue Floor Tile with Mastic	12/21/2016	FS37	ND	No
CHSMM18-1	4" Gray Molding	12/21/2016	FS37	ND	No
CHSMM18-2	4" Gray Molding	12/21/2016	FS37	ND	No
CHSMM18-3	4" Gray Molding	12/21/2016	FS37	ND	No
CHSMM19-1	Pink Vinyl Drywall	12/21/2016	FS43	ND	No
CHSMM19-2	Pink Vinyl Drywall	12/21/2016	FS43	ND	No
CHSMM19-3	Pink Vinyl Drywall	12/21/2016	FS43	ND	No
CHSMM19-4	Pink Vinyl Drywall	12/21/2016	FS43	ND	No
CHSMM19-5	Pink Vinyl Drywall	12/21/2016	FS43	ND	No
CHSMM20-1	White Vinyl Drywall	12/21/2016	FS43	ND	No

Tat 3  
Sample Collection Summary  
City Hall - South Building Annex

File 16059

Sample I.D	DCHScription	Date Sampled	Functional Space #	% ACM	Asbestos Containing
CHSMM20-2	White Vinyl Drywall	12/21/2016	FS43	ND	No
CHSMM20-3	White Vinyl Drywall	12/21/2016	FS43	ND	No
CHSMM21-1	2' x 2' White Ceiling Tile with Perforations	12/21/2016	FS44	ND	No
CHSMM21-2	2' x 2' White Ceiling Tile with Perforations	12/21/2016	FS44	ND	No
CHSMM21-3	2' x 2' White Ceiling Tile with Perforations	12/21/2016	FS44	ND	No
CHSMM22-1	Pink Fuzzy Wall Covering	12/21/2016	FS44	ND	No
CHSMM22-2	Pink Fuzzy Wall Covering	12/21/2016	FS44	ND	No
CHSMM22-3	Pink Fuzzy Wall Covering	12/21/2016	FS44	ND	No
CHSMM23-1	9" Tan Floor Tile with Mastic	12/21/2016	FS46	Chrysotile 10% Mastic ND	Floor Tile - Yes Mastic - No
CHSMM23-2	9" Tan Floor Tile with Mastic	12/21/2016	FS46	NA/ Mastic ND	Floor Tile - Yes Mastic - No
CHSMM23-3	9" Tan Floor Tile with Mastic	12/21/2016	FS46	NA/ Mastic ND	Floor Tile - Yes Mastic - No
CHSMM23-4	9" Tan Floor Tile with Mastic	12/21/2016	FS46	NA/ Mastic ND	Floor Tile - Yes Mastic - No
CHSMM23-5	9" Tan Floor Tile with Mastic	12/21/2016	FS46	NA/ Mastic ND	Floor Tile - Yes Mastic - No
CHSMM24-1	2' x 4' White Ceiling Tile with Small Holes	12/21/2016	FS15	ND	No
CHSMM24-2	2' x 4' White Ceiling Tile with Small Holes	12/21/2016	FS15	ND	No
CHSMM24-3	2' x 4' White Ceiling Tile with Small Holes	12/21/2016	FS15	ND	No
CHSMM25-1	9" Gray Floor Tile with Tan Streaks/Mastic	12/21/2016	FS51	Chrysotile 10% Mastic ND	Floor Tile - Yes Mastic - No
CHSMM25-2	9" Gray Floor Tile with Tan Streaks/Mastic	12/21/2016	FS51	NA/ Mastic ND	Floor Tile - Yes Mastic - No
CHSMM25-3	9" Gray Floor Tile with Tan Streaks/Mastic	12/21/2016	FS52	NA/ Mastic ND	Floor Tile - Yes Mastic - No
CHSMM26-1	1' x 1' White Ceiling Tile with Holes	12/21/2016	FS51	ND	No
CHSMM26-2	1' x 1' White Ceiling Tile with Holes	12/21/2016	FS51	ND	No
CHSMM26-3	1' x 1' White Ceiling Tile with Holes	12/21/2016	FS51	ND	No
CHSMM27-1	9" Green Floor Tile with Mastic	12/21/2016	FS29	ND	No
CHSMM27-2	9" Green Floor Tile with Mastic	12/21/2016	FS30	ND	No
CHSMM27-3	9" Green Floor Tile with Mastic	12/21/2016	FS30	ND	No

Tab 3  
Sample Collection Summary  
City Hall - South Building Annex

File | 16059

Sample I.D	DCHSDescription	Date Sampled	Functional Space #	% ACM	Asbestos Containing
CHSSM1-1	Plaster	12/21/2016	FS1	ND	No
CHSSM1-2	Plaster	12/21/2016	FS2	ND	No
CHSSM1-3	Plaster	12/21/2016	FS20	ND	No
CHSSM1-4	Plaster	12/21/2016	FS40	ND	No
CHSSM1-5	Plaster	12/21/2016	FS41	ND	No
CHSSM1-6	Plaster	12/21/2016	FS41	ND	No
CHSSM1-7	Plaster	12/21/2016	FS48	ND	No
CHSSM2-1	Pink Caulk	12/21/2016	FS22	ND	No
CHSSM2-2	Pink Caulk	12/21/2016	FS22	ND	No
CHSSM2-3	Pink Caulk	12/21/2016	FS22	ND	No
CHSSM3-1	Brick Mortar	12/21/2016	FS23	ND	No
CHSSM3-2	Brick Mortar	12/21/2016	FS23	ND	No
CHSSM3-3	Brick Mortar	12/21/2016	FS23	ND	No
CHSSM3-4	Brick Mortar	12/21/2016	FS3	ND	No
CHSSM3-5	Brick Mortar	12/21/2016	FS3	ND	No
CHSSM3-6	Brick Mortar	12/21/2016	FS39	ND	No
CHSSM3-7	Brick Mortar	12/21/2016	FS39	ND	No
CHSSM4-1	Spray On Ceiling Insulation	12/21/2016	FS51	ND	No
CHSSM4-2	Spray On Ceiling Insulation	12/21/2016	FS51	ND	No
CHSSM4-3	Spray On Ceiling Insulation	12/21/2016	FS51	ND	No
CHSSM4-4	Spray On Ceiling Insulation	12/21/2016	FS51	ND	No
CHSSM4-5	Spray On Ceiling Insulation	12/21/2016	FS51	ND	No
CHSSM4-6	Spray On Ceiling Insulation	12/21/2016	FS51	ND	No
CHSSM4-7	Spray On Ceiling Insulation	12/21/2016	FS51	ND	No
CHSTS1-1	<b>Millboard Runs</b>	<b>12/21/2016</b>	<b>FS3</b>	<b>Chrysotile 15%</b>	<b>Yes</b>



Tab 3  
Sample Collection Summary  
City Hall - South Building Annex

File 1 16059

Sample I.D	DCHScription	Date Sampled	Functional Space #	% ACM	Asbestos Containing
CHSTS1-2	Millboard Runs	12/21/2016	FS3	NA	Yes
CHSTS1-3	Millboard Runs	12/21/2016	FS3	NA	Yes
CHSTS2-1	Mudded Fittings on Fiberglass Run	12/21/2016	FS1	Chrysotile 50%	Yes
CHSTS2-2	Mudded Fittings on Fiberglass Run	12/21/2016	FS1	NA	Yes
CHSTS2-3	Mudded Fittings on Fiberglass Run	12/21/2016	FS2	NA	Yes
CHSTS3-1	Fittings on Millboard Runs	12/21/2016	FS3	Chrysotile 35%	Yes
CHSTS3-2	Fittings on Millboard Runs	12/21/2016	FS3	NA	Yes
CHSTS3-3	Fittings on Millboard Runs	12/21/2016	FS3	NA	Yes
CHSTS4-1	Canvas Wrap over Fiberglass on Duct Work	12/21/2016	FS6	ND	No
CHSTS4-2	Canvas Wrap over Fiberglass on Duct Work	12/21/2016	FS6	ND	No
CHSTS4-3	Canvas Wrap over Fiberglass on Duct Work	12/21/2016	FS7	ND	No
CHSTS6-1	6" Mag Run	12/21/2016	FS35	Chrysotile 20%	Yes
CHSTS6-2	6" Mag Run	12/21/2016	FS35	NA	Yes
CHSTS6-3	6" Mag Run	12/21/2016	FS35	NA	Yes

Notes:

Samples analyzed in accordance with U.S. EPA Method - 600/M4-82-020

ND - No Asbestos Detected

Detection Limit: 1 percent by weight based on calibrated area visual estimate

NA - Not analyzed because previous sample in homogeneous area contained > 1% asbestos

**Indicates sample contains asbestos >1%.**

TABLES 4A – 4D  
Quantities of ACM

**Quantities of Asbestos Containing Building Materials  
City Hall - South Building Annex**

HA #	Material Description	Locations	% Asbestos	Quantity	Units	Friable/Non-Friable
CHSMM1	9" Gray Floor Tile with Mastic	FS1	Chrysotile 10% Mastic ND	64	Square feet	Non Friable
CHSMM7	9" Brown Floor Tile with Cream Streaks & Mastic	FS12	Chrysotile 10% Mastic ND	64	Square feet	Non Friable
CHSMM15	Pink Floor Tile with Black Mastic	FS35	Chrysotile 10% Mastic ND	2,542	Square feet	Non Friable
CHSMM23	9" Tan Floor Tile with Mastic	Throughout 2nd Floor (Under Carpets)	Chrysotile 10% Mastic ND	3,195	Square feet	Non Friable
CHSMM25	9" Gray Floor Tile with Tan Streaks/Mastic	FS51, FS52	Chrysotile 10% Mastic ND	972	Square feet	Non Friable
CHSTS1	Mill board Runs	Throughout	Chrysotile 15%	110	Linear feet	Friable
CHSTS2	Mudded Fittings on Fiberglass Runs	Throughout	Chrysotile 50%	21	Linear feet	Friable
CHSTS3	Mill board Run Fittings	Throughout	Chrysotile 35%	180	Linear feet	Friable
CHSTS5	Expansion Joints	FS7, FS26	Assumed	20	Square feet	Friable
CHSTS6	6" Mill board Run	FS 35 (above drop ceiling), likely in wall voids, pipe chases, above drop ceilings	Chrysotile 20%	65	Linear feet	Friable

Note: Quantities are estimated based on visible materials observed during the survey and review of building drawings.

Quantities that are listed are estimates only. It is the contractor's responsibility to verify all amounts of asbestos identified during the bid process.

Note: Debris piles with pipe insulation were noted throughout the pipe chases and in base of columns.

# ATTACHMENT 1

## Photographs

## City Hall South Annex



MM1  
9" Gray Floor Tile with Mastic



MM2  
4" Black Molding with Glue



MM3  
2' x 4' White Ceiling Tile with Perforations



MM4  
Black Mastic



MM5  
Brown Adhesive



MM6  
Brown Fiberboard



**GLOBAL  
ENVIRONMENTAL  
ENGINEERING INC.**

**Address: City Hall – South Building, Flint, Michigan.**

**Pictures of Potential Asbestos  
Containing Material**

Prepared By:	DMY
Taken:	12/21/16
Page:	1 of 7



MM7  
9" Brown Floor Tile with Cream Streaks and Mastic



MM8  
Drywall Panels



MM9  
12" White Floor Tile with Gray Streaks and Mastic



MM10  
2' x 4' White Ceiling Tile with Holes and Perforations



MM11  
18" Gray Floor Tile



MM12  
6" Black Molding



**GLOBAL  
ENVIRONMENTAL  
ENGINEERING INC.**

**Address: City Hall – South Building, Flint, Michigan.**

**Pictures of Potential Asbestos  
Containing Material**

Prepared By: DMY

Taken: 12/21/16

Page: 2 of 7





MM13  
Yellow Carpet Adhesive



MM14  
Drywall with Joint Compound



MM15  
Pink Floor Tile with Mastic



MM16  
Tan Textured Vinyl Drywall



MM17  
12" Blue Floor Tile with Mastic



MM18  
4" Gray Molding



**GLOBAL  
ENVIRONMENTAL  
ENGINEERING INC.**

**Address: City Hall – South Building, Flint, Michigan.**

**Pictures of Potential Asbestos  
Containing Material**

Prepared By:	DMY
Taken:	12/21/16
Page:	3 of 7



MM19  
Pink Vinyl Drywall



MM20  
White Vinyl Drywall



MM21  
2' x 2' White Ceiling Tile with Perforations



MM22  
Pink Fuzzy Wall Covering



MM23  
9' Tan Floor Tile with Mastic



MM24  
2' x 4' White Ceiling Tile with Small Holes



**GLOBAL  
ENVIRONMENTAL  
ENGINEERING INC.**

**Address: City Hall – South Building, Flint, Michigan.**

**Pictures of Potential Asbestos  
Containing Material**

Prepared By:	DMY
Taken:	12/21/16
Page:	4 of 7



MM25

9" Gray Floor Tile with Tan Streaks and Mastic



MM26

1' x 1' White Ceiling Tile with Holes



MM27

9" Green Floor Tile with Mastic



MM30

Blue Stage Curtain



**GLOBAL  
ENVIRONMENTAL  
ENGINEERING INC.**

**Address: City Hall – South Building, Flint, Michigan.**

**Pictures of Potential Asbestos  
Containing Material**

Prepared By: DMY

Taken: 12/21/16

Page: 5 of 7





SM1  
Plaster



SM2  
Pink Caulk



SM3  
Brick Mortar



SM4  
White Spray On Material



TS11  
Millboard Runs



TS12  
Mudded Fittings on Fiberglass Runs



**GLOBAL  
ENVIRONMENTAL  
ENGINEERING INC.**

**Address: City Hall – South Building, Flint, Michigan.**

**Pictures of Potential Asbestos  
Containing Material**

Prepared By: DMY

Taken: 12/21/16

Page: 6 of 7



TSI3  
Millboard Run Fittings



TSI4  
Canvas Wrap over Fiberglass Duct Work



TSI5  
Expansion Joints



TSI6  
6" Millboard Run



**GLOBAL  
ENVIRONMENTAL  
ENGINEERING INC.**

Address: City Hall – South Building, Flint, Michigan.

**Pictures of Potential Asbestos  
Containing Material**

Prepared By:	DMY
Taken:	12/21/16
Page:	7 of 7

## ATTACHMENT 2

### Laboratory Analytical Data



## City Hall South Annex



# Certificate of Laboratory Analysis

## Test Method, Polarized Light Microscopy (PLM)

Project: City Hall South Bldg  
Project #: EE16059

**Report To:**

Mr. Julie Robbins  
Global Environmental Engineering Inc  
10312 N. Holly Rd  
Holly, MI 48442

ARI Report # 17-68481

Date Collected: 12/21/16

Date Received: 01/13/17

Date Analyzed: 01/19/17

Date Reported: 01/19/17

**Sample Information****Asbestos Type/Percent****Non-Asbestos**

Lab ID #: 68481 - 01  
Cust. #: CHSMM1-1  
Material: 9" Grey Floor Tile  
Location: FS 1  
Appearance: grey, fibrous, homogenous  
Layer: 1 of 2

Asbestos Present: **YES**  
Chrysotile - 10%

Other - 90%

Lab ID #: 68481 - 01a  
Cust. #: CHSMM1-1  
Material: Mastic  
Location: FS 1  
Appearance: black, nonfibrous, homogenous  
Layer: 2 of 2

Asbestos Present: **NO**  
No Asbestos Observed

Other - 100%

Lab ID #: 68481 - 02  
Cust. #: CHSMM1-2  
Material: 9" Grey Floor Tile  
Location: FS 1  
Appearance:  
Layer: 1 of 2

Asbestos Present:  
  
NOT ANALYZED

For Layered Samples, each component will be analyzed and reported separately.

Robert T. Letarte Jr., Laboratory Director

Test Method EPA 600/R-93/116 was used to analyze the above samples. Matrix interference and/or resolution limits may yield false/negative results in certain circumstances. Suspect floor tiles containing <1% should be tested with SEM or TEM. This certificate of analysis relates only to the samples tested and to insure the integrity of the results, may only be reproduced in full. This certificate may not be used by the customer to claim product endorsement by NVLAP or any agency of the US Government. APEX Research Inc. is not responsible for the accuracy of the results for layered samples or samples comprising multiple materials. Liability limited to cost of analysis.



NVLAP Lab Code 102118-0



# Certificate of Laboratory Analysis

## Test Method, Polarized Light Microscopy (PLM)

Project: City Hall South Bldg  
Project #: EE16059

**Report To:**

Mr. Julie Robbins  
Global Environmental Engineering Inc  
10312 N. Holly Rd  
Holly, MI 48442

ARI Report # 17-68481

Date Collected: 12/21/16

Date Received: 01/13/17

Date Analyzed: 01/19/17

Date Reported: 01/19/17

Sample Information	Asbestos Type/Percent	Non-Asbestos
Lab ID #: 68481 - 02a Cust. #: CHSMM1-2 Material: Mastic Location: FS 1 Appearance: black, nonfibrous, homogenous Layer: 2 of 2	Asbestos Present: <b>NO</b> No Asbestos Observed	Other - 100%
Lab ID #: 68481 - 03 Cust. #: CHSMM1-3 Material: 9" Grey Floor Tile Location: FS 1 Appearance: Layer: 1 of 2	Asbestos Present:  NOT ANALYZED	
Lab ID #: 68481 - 03a Cust. #: CHSMM1-3 Material: Mastic Location: FS 1 Appearance: black, nonfibrous, homogenous Layer: 2 of 2	Asbestos Present: <b>NO</b> No Asbestos Observed	Other - 100%

For Layered Samples, each component will be analyzed and reported separately.

Robert T. Letarte Jr., Laboratory Director

Test Method EPA 600/R-93/116 was used to analyze the above samples. Matrix interference and/or resolution limits may yield false/negative results in certain circumstances. Suspect floor tiles containing <1% should be tested with SEM or TEM. This certificate of analysis relates only to the samples tested and to insure the integrity of the results, may only be reproduced in full. This certificate may not be used by the customer to claim product endorsement by NVLAP or any agency of the US Government. APEX Research Inc. is not responsible for the accuracy of the results for layered samples or samples comprising multiple materials. Liability limited to cost of analysis.



NVLAP Lab Code 102118-0



# Certificate of Laboratory Analysis

## Test Method, Polarized Light Microscopy (PLM)

Project: City Hall South Bldg  
Project #: EE16059

**Report To:**

Mr. Julie Robbins  
Global Environmental Engineering Inc  
10312 N. Holly Rd  
Holly, MI 48442

ARI Report # 17-68481  
Date Collected: 12/21/16  
Date Received: 01/13/17  
Date Analyzed: 01/19/17  
Date Reported: 01/19/17

Sample Information	Asbestos Type/Percent	Non-Asbestos
Lab ID #: 68481 - 04 Cust. #: CHSMM2-1 Material: 4" Black Molding Location: FS 1 Appearance: black,nonfibrous,homogenous Layer: 1 of 2	Asbestos Present: <b>NO</b> No Asbestos Observed	Other - 100%
Lab ID #: 68481 - 04a Cust. #: CHSMM2-1 Material: Glue Location: FS 1 Appearance: yellow,nonfibrous,homogenous Layer: 2 of 2	Asbestos Present: <b>NO</b> No Asbestos Observed	Other - 100%
Lab ID #: 68481 - 05 Cust. #: CHSMM2-2 Material: 4" Black Molding Location: FS 16 Appearance: black,nonfibrous,homogenous Layer: 1 of 2	Asbestos Present: <b>NO</b> No Asbestos Observed	Other - 100%

For Layered Samples, each component will be analyzed and reported separately.

Robert T. Letarte Jr., Laboratory Director

Test Method EPA 600/R-93/116 was used to analyze the above samples. Matrix interference and/or resolution limits may yield false/negative results in certain circumstances. Suspect floor tiles containing <1% should be tested with SEM or TEM. This certificate of analysis relates only to the samples tested and to insure the integrity of the results, may only be reproduced in full. This certificate may not be used by the customer to claim product endorsement by NVLAP or any agency of the US Government. APEX Research Inc. is not responsible for the accuracy of the results for layered samples or samples comprising multiple materials. Liability limited to cost of analysis.



NVLAP Lab Code 102118-0



# Certificate of Laboratory Analysis

## Test Method, Polarized Light Microscopy (PLM)

Project: City Hall South Bldg  
Project #: EE16059

**Report To:**

Mr. Julie Robbins  
Global Environmental Engineering Inc  
10312 N. Holly Rd  
Holly, MI 48442

ARI Report # 17-68481

Date Collected: 12/21/16

Date Received: 01/13/17

Date Analyzed: 01/19/17

Date Reported: 01/19/17

Sample Information	Asbestos Type/Percent	Non-Asbestos
Lab ID #: 68481 - 05a Cust. #: CHSMM2-2 Material: Glue Location: FS 16 Appearance: yellow,nonfibrous,homogenous Layer: 2 of 2	Asbestos Present: <b>NO</b> No Asbestos Observed	Other - 100%
Lab ID #: 68481 - 06 Cust. #: CHSMM2-3 Material: 4" Black Molding Location: FS 33 Appearance: black,nonfibrous,homogenous Layer: 1 of 2	Asbestos Present: <b>NO</b> No Asbestos Observed	Other - 100%
Lab ID #: 68481 - 06a Cust. #: CHSMM2-3 Material: Glue Location: FS 33 Appearance: yellow,nonfibrous,homogenous Layer: 2 of 2	Asbestos Present: <b>NO</b> No Asbestos Observed	Other - 100%

For Layered Samples, each component will be analyzed and reported separately.

Robert T. Letarte Jr., Laboratory Director

Test Method EPA 600/R-93/116 was used to analyze the above samples. Matrix interference and/or resolution limits may yield false/negative results in certain circumstances. Suspect floor tiles containing <1% should be tested with SEM or TEM. This certificate of analysis relates only to the samples tested and to insure the integrity of the results, may only be reproduced in full. This certificate may not be used by the customer to claim product endorsement by NVLAP or any agency of the US Government. APEX Research Inc. is not responsible for the accuracy of the results for layered samples or samples comprising multiple materials. Liability limited to cost of analysis.



NVLAP Lab Code 102118-0



# Certificate of Laboratory Analysis

## Test Method, Polarized Light Microscopy (PLM)

Project: City Hall South Bldg  
Project #: EE16059

**Report To:**

Mr. Julie Robbins  
Global Environmental Engineering Inc  
10312 N. Holly Rd  
Holly, MI 48442

ARI Report # 17-68481  
Date Collected: 12/21/16  
Date Received: 01/13/17  
Date Analyzed: 01/19/17  
Date Reported: 01/19/17

Sample Information	Asbestos Type/Percent	Non-Asbestos
Lab ID #: 68481 - 07 Cust. #: CHSMM3-1 Material: 2x4 White Ceiling Tile, Perforations Location: FS 16 Appearance: brown, fibrous, homogenous Layer: 1 of 1	Asbestos Present: <b>NO</b> No Asbestos Observed	Cellulose - 30% Mineral Wool - 50% Other - 20%
Lab ID #: 68481 - 08 Cust. #: CHSMM3-2 Material: 2x4 White Ceiling Tile, Perforations Location: FS 16 Appearance: brown, fibrous, homogenous Layer: 1 of 1	Asbestos Present: <b>NO</b> No Asbestos Observed	Cellulose - 30% Mineral Wool - 50% Other - 20%
Lab ID #: 68481 - 09 Cust. #: CHSMM3-3 Material: 2x4 White Ceiling Tile, Perforations Location: FS 16 Appearance: brown, fibrous, homogenous Layer: 1 of 1	Asbestos Present: <b>NO</b> No Asbestos Observed	Cellulose - 30% Mineral Wool - 50% Other - 20%

For Layered Samples, each component will be analyzed and reported separately.

Robert T. Letarte Jr., Laboratory Director

Test Method EPA 600/R-93/116 was used to analyze the above samples. Matrix interference and/or resolution limits may yield false/negative results in certain circumstances. Suspect floor tiles containing <1% should be tested with SEM or TEM. This certificate of analysis relates only to the samples tested and to insure the integrity of the results, may only be reproduced in full. This certificate may not be used by the customer to claim product endorsement by NVLAP or any agency of the US Government. APEX Research Inc. is not responsible for the accuracy of the results for layered samples or samples comprising multiple materials. Liability limited to cost of analysis.



NVLAP Lab Code 102118-0





# Certificate of Laboratory Analysis

## Test Method, Polarized Light Microscopy (PLM)

Project: City Hall South Bldg  
Project #: EE16059

**Report To:**

Mr. Julie Robbins  
Global Environmental Engineering Inc  
10312 N. Holly Rd  
Holly, MI 48442

ARI Report # 17-68481  
Date Collected: 12/21/16  
Date Received: 01/13/17  
Date Analyzed: 01/19/17  
Date Reported: 01/19/17

Sample Information	Asbestos Type/Percent	Non-Asbestos
Lab ID #: 68481 - 10 Cust. #: CHSMM4-1 Material: Black Mastic Location: FS 4 Appearance: black,nonfibrous,homogenous Layer: 1 of 1	Asbestos Present: <b>NO</b> No Asbestos Observed	Other - 100%
Lab ID #: 68481 - 11 Cust. #: CHSMM4-2 Material: Black Mastic Location: FS 4 Appearance: black,nonfibrous,homogenous Layer: 1 of 1	Asbestos Present: <b>NO</b> No Asbestos Observed	Other - 100%
Lab ID #: 68481 - 12 Cust. #: CHSMM4-3 Material: Black Mastic Location: FS 4 Appearance: black,nonfibrous,homogenous Layer: 1 of 1	Asbestos Present: <b>NO</b> No Asbestos Observed	Other - 100%

For Layered Samples, each component will be analyzed and reported separately.

Robert T. Letarte Jr., Laboratory Director

Test Method EPA 600/R-93/116 was used to analyze the above samples. Matrix interference and/or resolution limits may yield false/negative results in certain circumstances. Suspect floor tiles containing <1% should be tested with SEM or TEM. This certificate of analysis relates only to the samples tested and to insure the integrity of the results, may only be reproduced in full. This certificate may not be used by the customer to claim product endorsement by NVLAP or any agency of the US Government. APEX Research Inc. is not responsible for the accuracy of the results for layered samples or samples comprising multiple materials. Liability limited to cost of analysis.



NVLAP Lab Code 102118-0



# Certificate of Laboratory Analysis

## Test Method, Polarized Light Microscopy (PLM)

Project: City Hall South Bldg  
Project #: EE16059

**Report To:**

Mr. Julie Robbins  
Global Environmental Engineering Inc  
10312 N. Holly Rd  
Holly, MI 48442

ARI Report # 17-68481

Date Collected: 12/21/16

Date Received: 01/13/17

Date Analyzed: 01/19/17

Date Reported: 01/19/17

Sample Information	Asbestos Type/Percent	Non-Asbestos
Lab ID #: 68481 - 13 Cust. #: CHSMM5-1 Material: Brown Adhesive Location: FS 4 Appearance: brown,nonfibrous,homogenous Layer: 1 of 1	Asbestos Present: <b>NO</b> No Asbestos Observed	Cellulose - 1% Other - 99%
Lab ID #: 68481 - 14 Cust. #: CHSMM5-2 Material: Brown Adhesive Location: FS 4 Appearance: brown,nonfibrous,homogenous Layer: 1 of 1	Asbestos Present: <b>NO</b> No Asbestos Observed	Other - 100%
Lab ID #: 68481 - 15 Cust. #: CHSMM5-3 Material: Brown Adhesive Location: FS 21 Appearance: brown,nonfibrous,homogenous Layer: 1 of 1	Asbestos Present: <b>NO</b> No Asbestos Observed	Cellulose - 1% Other - 99%

For Layered Samples, each component will be analyzed and reported separately.

Robert T. Letarte Jr., Laboratory Director

Test Method EPA 600/R-93/116 was used to analyze the above samples. Matrix interference and/or resolution limits may yield false/negative results in certain circumstances. Suspect floor tiles containing <1% should be tested with SEM or TEM. This certificate of analysis relates only to the samples tested and to insure the integrity of the results, may only be reproduced in full. This certificate may not be used by the customer to claim product endorsement by NVLAP or any agency of the US Government. APEX Research Inc. is not responsible for the accuracy of the results for layered samples or samples comprising multiple materials. Liability limited to cost of analysis.



NVLAP Lab Code 102118-0



# Certificate of Laboratory Analysis

## Test Method, Polarized Light Microscopy (PLM)

Project: City Hall South Bldg  
Project #: EE16059

**Report To:**

Mr. Julie Robbins  
Global Environmental Engineering Inc  
10312 N. Holly Rd  
Holly, MI 48442

ARI Report # 17-68481  
Date Collected: 12/21/16  
Date Received: 01/13/17  
Date Analyzed: 01/19/17  
Date Reported: 01/19/17

Sample Information	Asbestos Type/Percent	Non-Asbestos
Lab ID #: 68481 - 16 Cust. #: CHSMM6-1 Material: Brown Fiberboard Location: FS 7 Appearance: brown, fibrous, homogenous Layer: 1 of 1	Asbestos Present: <b>NO</b> No Asbestos Observed	Cellulose - 70% Other - 30%
Lab ID #: 68481 - 17 Cust. #: CHSMM6-2 Material: Brown Fiberboard Location: FS 7 Appearance: brown, fibrous, homogenous Layer: 1 of 1	Asbestos Present: <b>NO</b> No Asbestos Observed	Cellulose - 70% Other - 30%
Lab ID #: 68481 - 18 Cust. #: CHSMM6-3 Material: Brown Fiberboard Location: FS 7 Appearance: brown, fibrous, homogenous Layer: 1 of 1	Asbestos Present: <b>NO</b> No Asbestos Observed	Cellulose - 70% Other - 30%

For Layered Samples, each component will be analyzed and reported separately.

Robert T. Letarte Jr., Laboratory Director

Test Method EPA 600/R-93/116 was used to analyze the above samples. Matrix interference and/or resolution limits may yield false/negative results in certain circumstances. Suspect floor tiles containing <1% should be tested with SEM or TEM. This certificate of analysis relates only to the samples tested and to insure the integrity of the results, may only be reproduced in full. This certificate may not be used by the customer to claim product endorsement by NVLAP or any agency of the US Government. APEX Research Inc. is not responsible for the accuracy of the results for layered samples or samples comprising multiple materials. Liability limited to cost of analysis.



NVLAP Lab Code 102118-0



# Certificate of Laboratory Analysis

## Test Method, Polarized Light Microscopy (PLM)

Project: City Hall South Bldg  
Project #: EE16059

**Report To:**

Mr. Julie Robbins  
Global Environmental Engineering Inc  
10312 N. Holly Rd  
Holly, MI 48442

ARI Report # 17-68481  
Date Collected: 12/21/16  
Date Received: 01/13/17  
Date Analyzed: 01/19/17  
Date Reported: 01/19/17

Sample Information	Asbestos Type/Percent	Non-Asbestos
Lab ID #: 68481 - 19 Cust. #: CHSMM7-1 Material: 9" Brown Floor Tile, Cream Streaks Location: FS 12 Appearance: grey, fibrous, homogenous Layer: 1 of 2	Asbestos Present: <b>YES</b> Chrysotile - 10%	Other - 90%
Lab ID #: 68481 - 19a Cust. #: CHSMM7-1 Material: Mastic Location: FS 12 Appearance: black, nonfibrous, homogenous Layer: 2 of 2	Asbestos Present: <b>NO</b> No Asbestos Observed	Other - 100%
Lab ID #: 68481 - 20 Cust. #: CHSMM7-2 Material: 9" Brown Floor Tile, Cream Streaks Location: FS 12 Appearance: Layer: 1 of 2	Asbestos Present:  NOT ANALYZED	

For Layered Samples, each component will be analyzed and reported separately.

Robert T. Letarte Jr., Laboratory Director

Test Method EPA 600/R-93/116 was used to analyze the above samples. Matrix interference and/or resolution limits may yield false/negative results in certain circumstances. Suspect floor tiles containing <1% should be tested with SEM or TEM. This certificate of analysis relates only to the samples tested and to insure the integrity of the results, may only be reproduced in full. This certificate may not be used by the customer to claim product endorsement by NVLAP or any agency of the US Government. APEX Research Inc. is not responsible for the accuracy of the results for layered samples or samples comprising multiple materials. Liability limited to cost of analysis.



NVLAP Lab Code 102118-0



# Certificate of Laboratory Analysis

## Test Method, Polarized Light Microscopy (PLM)

Project: City Hall South Bldg  
Project #: EE16059

**Report To:**

Mr. Julie Robbins  
Global Environmental Engineering Inc  
10312 N. Holly Rd  
Holly, MI 48442

ARI Report # 17-68481  
Date Collected: 12/21/16  
Date Received: 01/13/17  
Date Analyzed: 01/19/17  
Date Reported: 01/19/17

Sample Information	Asbestos Type/Percent	Non-Asbestos
Lab ID #: 68481 - 20a Cust. #: CHSMM7-2 Material: Mastic Location: FS 12 Appearance: black, nonfibrous, homogenous Layer: 2 of 2	Asbestos Present: <b>NO</b> No Asbestos Observed	Other - 100%
Lab ID #: 68481 - 21 Cust. #: CHSMM7-3 Material: 9" Brown Floor Tile, Cream Streaks Location: FS 12 Appearance: Layer: of	Asbestos Present:  NOT ANALYZED	
Lab ID #: 68481 - 22 Cust. #: CHSMM8-1 Material: Drywall Panels Location: FS 17 Appearance: white, fibrous, nonhomogenous Layer: 1 of 1	Asbestos Present: <b>NO</b> No Asbestos Observed	Cellulose - 20% Fiberglass - 5% Other - 75%

For Layered Samples, each component will be analyzed and reported separately.

Robert T. Letarte Jr., Laboratory Director

Test Method EPA 600/R-93/116 was used to analyze the above samples. Matrix interference and/or resolution limits may yield false/negative results in certain circumstances. Suspect floor tiles containing <1% should be tested with SEM or TEM. This certificate of analysis relates only to the samples tested and to insure the integrity of the results, may only be reproduced in full. This certificate may not be used by the customer to claim product endorsement by NVLAP or any agency of the US Government. APEX Research Inc. is not responsible for the accuracy of the results for layered samples or samples comprising multiple materials. Liability limited to cost of analysis.



NVLAP Lab Code 102118-0



# Certificate of Laboratory Analysis

## Test Method, Polarized Light Microscopy (PLM)

Project: City Hall South Bldg  
Project #: EE16059

**Report To:**

Mr. Julie Robbins  
Global Environmental Engineering Inc  
10312 N. Holly Rd  
Holly, MI 48442

ARI Report # 17-68481  
Date Collected: 12/21/16  
Date Received: 01/13/17  
Date Analyzed: 01/19/17  
Date Reported: 01/19/17

Sample Information	Asbestos Type/Percent	Non-Asbestos
Lab ID #: 68481 - 23 Cust. #: CHSMM8-2 Material: Drywall Panels Location: FS 13 Appearance: white, fibrous, nonhomogenous Layer: 1 of 1	Asbestos Present: <b>NO</b> No Asbestos Observed	Cellulose - 20% Fiberglass - 5% Other - 75%
Lab ID #: 68481 - 24 Cust. #: CHSMM8-3 Material: Drywall Panels Location: FS 35 Appearance: white, fibrous, nonhomogenous Layer: 1 of 1	Asbestos Present: <b>NO</b> No Asbestos Observed	Cellulose - 20% Fiberglass - 5% Other - 75%
Lab ID #: 68481 - 25 Cust. #: CHSMM8-4 Material: Drywall Panels Location: FS 35 Appearance: white, fibrous, nonhomogenous Layer: 1 of 1	Asbestos Present: <b>NO</b> No Asbestos Observed	Cellulose - 20% Fiberglass - 5% Other - 75%

For Layered Samples, each component will be analyzed and reported separately.

Robert T. Letarte Jr., Laboratory Director

Test Method EPA 600/R-93/116 was used to analyze the above samples. Matrix interference and/or resolution limits may yield false/negative results in certain circumstances. Suspect floor tiles containing <1% should be tested with SEM or TEM. This certificate of analysis relates only to the samples tested and to insure the integrity of the results, may only be reproduced in full. This certificate may not be used by the customer to claim product endorsement by NVLAP or any agency of the US Government. APEX Research Inc. is not responsible for the accuracy of the results for layered samples or samples comprising multiple materials. Liability limited to cost of analysis.



NVLAP Lab Code 102118-0





# Certificate of Laboratory Analysis

## Test Method, Polarized Light Microscopy (PLM)

Project: City Hall South Bldg  
Project #: EE16059

**Report To:**

Mr. Julie Robbins  
Global Environmental Engineering Inc  
10312 N. Holly Rd  
Holly, MI 48442

ARI Report # 17-68481  
Date Collected: 12/21/16  
Date Received: 01/13/17  
Date Analyzed: 01/19/17  
Date Reported: 01/19/17

Sample Information	Asbestos Type/Percent	Non-Asbestos
Lab ID #: 68481 - 26 Cust. #: CHSMM8-5 Material: Drywall Panels Location: FS 35 Appearance: white, fibrous, nonhomogenous Layer: 1 of 1	Asbestos Present: <b>NO</b> No Asbestos Observed	Cellulose - 20% Fiberglass - 5% Other - 75%
Lab ID #: 68481 - 27 Cust. #: CHSMM9-1 Material: 12" White Floor Tile, Grey Streaks Location: FS 18 Appearance: white, nonfibrous, homogenous Layer: 1 of 2	Asbestos Present: <b>NO</b> No Asbestos Observed	Other - 100%
Lab ID #: 68481 - 27a Cust. #: CHSMM9-1 Material: Glue Location: FS 18 Appearance: yellow, nonfibrous, homogenous Layer: 2 of 2	Asbestos Present: <b>NO</b> No Asbestos Observed	Other - 100%

For Layered Samples, each component will be analyzed and reported separately.

Robert T. Letarte Jr., Laboratory Director

Test Method EPA 600/R-93/116 was used to analyze the above samples. Matrix interference and/or resolution limits may yield false/negative results in certain circumstances. Suspect floor tiles containing <1% should be tested with SEM or TEM. This certificate of analysis relates only to the samples tested and to insure the integrity of the results, may only be reproduced in full. This certificate may not be used by the customer to claim product endorsement by NVLAP or any agency of the US Government. APEX Research Inc. is not responsible for the accuracy of the results for layered samples or samples comprising multiple materials. Liability limited to cost of analysis.



NVLAP Lab Code 102118-0



# Certificate of Laboratory Analysis

## Test Method, Polarized Light Microscopy (PLM)

Project: City Hall South Bldg  
Project #: EE16059

**Report To:**

Mr. Julie Robbins  
Global Environmental Engineering Inc  
10312 N. Holly Rd  
Holly, MI 48442

ARI Report # 17-68481  
Date Collected: 12/21/16  
Date Received: 01/13/17  
Date Analyzed: 01/19/17  
Date Reported: 01/19/17

Sample Information	Asbestos Type/Percent	Non-Asbestos
Lab ID #: 68481 - 28 Cust. #: CHSMM9-2 Material: 12" White Floor Tile, Grey Streaks Location: FS 24 Appearance: white,nonfibrous,homogenous Layer: 1 of 2	Asbestos Present: <b>NO</b> No Asbestos Observed	Other - 100%
Lab ID #: 68481 - 28a Cust. #: CHSMM9-2 Material: Glue Location: FS 24 Appearance: yellow,nonfibrous,homogenous Layer: 2 of 2	Asbestos Present: <b>NO</b> No Asbestos Observed	Other - 100%
Lab ID #: 68481 - 29 Cust. #: CHSMM9-3 Material: 12" White Floor Tile, Grey Streaks Location: FS 33 Appearance: white,nonfibrous,homogenous Layer: 1 of 2	Asbestos Present: <b>NO</b> No Asbestos Observed	Other - 100%

For Layered Samples, each component will be analyzed and reported separately.

Robert T. Letarte Jr., Laboratory Director

Test Method EPA 600/R-93/116 was used to analyze the above samples. Matrix interference and/or resolution limits may yield false/negative results in certain circumstances. Suspect floor tiles containing <1% should be tested with SEM or TEM. This certificate of analysis relates only to the samples tested and to insure the integrity of the results, may only be reproduced in full. This certificate may not be used by the customer to claim product endorsement by NVLAP or any agency of the US Government. APEX Research Inc. is not responsible for the accuracy of the results for layered samples or samples comprising multiple materials. Liability limited to cost of analysis.



NVLAP Lab Code 102118-0



# Certificate of Laboratory Analysis

## Test Method, Polarized Light Microscopy (PLM)

Project: City Hall South Bldg  
Project #: EE16059

**Report To:**

Mr. Julie Robbins  
Global Environmental Engineering Inc  
10312 N. Holly Rd  
Holly, MI 48442

ARI Report # 17-68481  
Date Collected: 12/21/16  
Date Received: 01/13/17  
Date Analyzed: 01/19/17  
Date Reported: 01/19/17

Sample Information	Asbestos Type/Percent	Non-Asbestos
Lab ID #: 68481 - 29a Cust. #: CHSMM9-3 Material: Glue Location: FS 33 Appearance: yellow,nonfibrous,homogenous Layer: 2 of 2	Asbestos Present: <b>NO</b> No Asbestos Observed	Other - 100%
Lab ID #: 68481 - 30 Cust. #: CHSMM9-4 Material: 12" White Floor Tile, Grey Streaks Location: FS 21 Appearance: white,nonfibrous,homogenous Layer: 1 of 2	Asbestos Present: <b>NO</b> No Asbestos Observed	Other - 100%
Lab ID #: 68481 - 30a Cust. #: CHSMM9-4 Material: Glue Location: FS 21 Appearance: yellow,nonfibrous,homogenous Layer: 2 of 2	Asbestos Present: <b>NO</b> No Asbestos Observed	Other - 100%

For Layered Samples, each component will be analyzed and reported separately.

Robert T. Letarte Jr., Laboratory Director

Test Method EPA 600/R-93/116 was used to analyze the above samples. Matrix interference and/or resolution limits may yield false/negative results in certain circumstances. Suspect floor tiles containing <1% should be tested with SEM or TEM. This certificate of analysis relates only to the samples tested and to insure the integrity of the results, may only be reproduced in full. This certificate may not be used by the customer to claim product endorsement by NVLAP or any agency of the US Government. APEX Research Inc. is not responsible for the accuracy of the results for layered samples or samples comprising multiple materials. Liability limited to cost of analysis.



NVLAP Lab Code 102118-0



# Certificate of Laboratory Analysis

## Test Method, Polarized Light Microscopy (PLM)

Project: City Hall South Bldg  
Project #: EE16059

**Report To:**

Mr. Julie Robbins  
Global Environmental Engineering Inc  
10312 N. Holly Rd  
Holly, MI 48442

ARI Report # 17-68481  
Date Collected: 12/21/16  
Date Received: 01/13/17  
Date Analyzed: 01/19/17  
Date Reported: 01/19/17

Sample Information	Asbestos Type/Percent	Non-Asbestos
Lab ID #: 68481 - 31 Cust. #: CHSMM9-5 Material: 12" White Floor Tile, Grey Streaks Location: FS 36 Appearance: white, nonfibrous, homogenous Layer: 1 of 2	Asbestos Present: <b>NO</b> No Asbestos Observed	Other - 100%
Lab ID #: 68481 - 31a Cust. #: CHSMM9-5 Material: Glue Location: FS 36 Appearance: yellow, nonfibrous, homogenous Layer: 2 of 2	Asbestos Present: <b>NO</b> No Asbestos Observed	Other - 100%
Lab ID #: 68481 - 32 Cust. #: CHSMM10-1 Material: 2x4 White Ceiling Tile, Holes, Perforations Location: FS 24 Appearance: brown, fibrous, homogenous Layer: 1 of 1	Asbestos Present: <b>NO</b> No Asbestos Observed	Cellulose - 50% Mineral Wool - 30% Other - 20%

For Layered Samples, each component will be analyzed and reported separately.

Robert T. Letarte Jr., Laboratory Director

Test Method EPA 600/R-93/116 was used to analyze the above samples. Matrix interference and/or resolution limits may yield false/negative results in certain circumstances. Suspect floor tiles containing <1% should be tested with SEM or TEM. This certificate of analysis relates only to the samples tested and to insure the integrity of the results, may only be reproduced in full. This certificate may not be used by the customer to claim product endorsement by NVLAP or any agency of the US Government. APEX Research Inc. is not responsible for the accuracy of the results for layered samples or samples comprising multiple materials. Liability limited to cost of analysis.



NVLAP Lab Code 102118-0



# Certificate of Laboratory Analysis

## Test Method, Polarized Light Microscopy (PLM)

Project: City Hall South Bldg  
Project #: EE16059

**Report To:**

Mr. Julie Robbins  
Global Environmental Engineering Inc  
10312 N. Holly Rd  
Holly, MI 48442

ARI Report # 17-68481

Date Collected: 12/21/16

Date Received: 01/13/17

Date Analyzed: 01/19/17

Date Reported: 01/19/17

Sample Information	Asbestos Type/Percent	Non-Asbestos
Lab ID #: 68481 - 33 Cust. #: CHSMM10-2 Material: 2x4 White Ceiling Tile, Holes, Perforations Location: FS 37 Appearance: beige, fibrous, homogenous Layer: 1 of 1	Asbestos Present: <b>NO</b> No Asbestos Observed	Cellulose - 40% Mineral Wool - 40% Other - 20%
Lab ID #: 68481 - 34 Cust. #: CHSMM10-3 Material: 2x4 White Ceiling Tile, Holes, Perforations Location: FS 39 Appearance: beige, fibrous, homogenous Layer: 1 of 1	Asbestos Present: <b>NO</b> No Asbestos Observed	Cellulose - 40% Mineral Wool - 30% Other - 30%
Lab ID #: 68481 - 35 Cust. #: CHSMM10-4 Material: 2x4 White Ceiling Tile, Holes, Perforations Location: FS 48 Appearance: beige, fibrous, homogenous Layer: 1 of 1	Asbestos Present: <b>NO</b> No Asbestos Observed	Cellulose - 40% Mineral Wool - 30% Other - 30%

For Layered Samples, each component will be analyzed and reported separately.

Robert T. Letarte Jr., Laboratory Director

Test Method EPA 600/R-93/116 was used to analyze the above samples. Matrix interference and/or resolution limits may yield false/negative results in certain circumstances. Suspect floor tiles containing <1% should be tested with SEM or TEM. This certificate of analysis relates only to the samples tested and to insure the integrity of the results, may only be reproduced in full. This certificate may not be used by the customer to claim product endorsement by NVLAP or any agency of the US Government. APEX Research Inc. is not responsible for the accuracy of the results for layered samples or samples comprising multiple materials. Liability limited to cost of analysis.



NVLAP Lab Code 102118-0



# Certificate of Laboratory Analysis

## Test Method, Polarized Light Microscopy (PLM)

Project: City Hall South Bldg  
Project #: EE16059

**Report To:**

Mr. Julie Robbins  
Global Environmental Engineering Inc  
10312 N. Holly Rd  
Holly, MI 48442

ARI Report # 17-68481  
Date Collected: 12/21/16  
Date Received: 01/13/17  
Date Analyzed: 01/19/17  
Date Reported: 01/19/17

Sample Information	Asbestos Type/Percent	Non-Asbestos
Lab ID #: 68481 - 36 Cust. #: CHSMM10-5 Material: 2x4 White Ceiling Tile, Holes, Perforations Location: FS 49 Appearance: beige, fibrous, homogenous Layer: 1 of 1	Asbestos Present: <b>NO</b> No Asbestos Observed	Cellulose - 40% Mineral Wool - 30% Other - 30%
Lab ID #: 68481 - 37 Cust. #: CHSMM11-1 Material: 18" Grey Floor Tile Location: FS 25 Appearance: grey, nonfibrous, homogenous Layer: 1 of 1	Asbestos Present: <b>NO</b> No Asbestos Observed	Other - 100%
Lab ID #: 68481 - 38 Cust. #: CHSMM11-2 Material: 18" Grey Floor Tile Location: FS 25 Appearance: grey, nonfibrous, homogenous Layer: 1 of 2	Asbestos Present: <b>NO</b> No Asbestos Observed	Other - 100%

For Layered Samples, each component will be analyzed and reported separately.

Robert T. Letarte Jr., Laboratory Director

Test Method EPA 600/R-93/116 was used to analyze the above samples. Matrix interference and/or resolution limits may yield false/negative results in certain circumstances. Suspect floor tiles containing <1% should be tested with SEM or TEM. This certificate of analysis relates only to the samples tested and to insure the integrity of the results, may only be reproduced in full. This certificate may not be used by the customer to claim product endorsement by NVLAP or any agency of the US Government. APEX Research Inc. is not responsible for the accuracy of the results for layered samples or samples comprising multiple materials. Liability limited to cost of analysis.



NVLAP Lab Code 102118-0



# Certificate of Laboratory Analysis

## Test Method, Polarized Light Microscopy (PLM)

Project: City Hall South Bldg  
Project #: EE16059

**Report To:**

Mr. Julie Robbins  
Global Environmental Engineering Inc  
10312 N. Holly Rd  
Holly, MI 48442

ARI Report # 17-68481  
Date Collected: 12/21/16  
Date Received: 01/13/17  
Date Analyzed: 01/19/17  
Date Reported: 01/19/17

Sample Information	Asbestos Type/Percent	Non-Asbestos
Lab ID #: 68481 - 38a Cust. #: CHSMM11-2 Material: Glue Location: FS 25 Appearance: yellow, nonfibrous, homogenous Layer: 2 of 2	Asbestos Present: <b>NO</b> No Asbestos Observed	Other - 100%
Lab ID #: 68481 - 39 Cust. #: CHSMM11-3 Material: 18" Grey Floor Tile Location: FS 25 Appearance: grey, nonfibrous, homogenous Layer: 1 of 1	Asbestos Present: <b>NO</b> No Asbestos Observed	Other - 100%
Lab ID #: 68481 - 40 Cust. #: CHSMM12-1 Material: 6" Black Molding Location: FS 27 Appearance: black, nonfibrous, homogenous Layer: 1 of 2	Asbestos Present: <b>NO</b> No Asbestos Observed	Other - 100%

For Layered Samples, each component will be analyzed and reported separately.

Robert T. Letarte Jr., Laboratory Director

Test Method EPA 600/R-93/116 was used to analyze the above samples. Matrix interference and/or resolution limits may yield false/negative results in certain circumstances. Suspect floor tiles containing <1% should be tested with SEM or TEM. This certificate of analysis relates only to the samples tested and to insure the integrity of the results, may only be reproduced in full. This certificate may not be used by the customer to claim product endorsement by NVLAP or any agency of the US Government. APEX Research Inc. is not responsible for the accuracy of the results for layered samples or samples comprising multiple materials. Liability limited to cost of analysis.



NVLAP Lab Code 102118-0





# Certificate of Laboratory Analysis

## Test Method, Polarized Light Microscopy (PLM)

Project: City Hall South Bldg  
Project #: EE16059

**Report To:**

Mr. Julie Robbins  
Global Environmental Engineering Inc  
10312 N. Holly Rd  
Holly, MI 48442

ARI Report # 17-68481

Date Collected: 12/21/16

Date Received: 01/13/17

Date Analyzed: 01/19/17

Date Reported: 01/19/17

Sample Information	Asbestos Type/Percent	Non-Asbestos
Lab ID #: 68481 - 40a Cust. #: CHSMM12-1 Material: Glue Location: FS 27 Appearance: yellow,nonfibrous,homogenous Layer: 2 of 2	Asbestos Present: <b>NO</b> No Asbestos Observed	Other - 100%
Lab ID #: 68481 - 41 Cust. #: CHSMM12-2 Material: 6" Black Molding Location: FS 28 Appearance: black,nonfibrous,homogenous Layer: 1 of 2	Asbestos Present: <b>NO</b> No Asbestos Observed	Other - 100%
Lab ID #: 68481 - 41a Cust. #: CHSMM12-2 Material: Glue Location: FS 28 Appearance: yellow,nonfibrous,homogenous Layer: 2 of 2	Asbestos Present: <b>NO</b> No Asbestos Observed	Other - 100%

For Layered Samples, each component will be analyzed and reported separately.

Robert T. Letarte Jr., Laboratory Director

Test Method EPA 600/R-93/116 was used to analyze the above samples. Matrix interference and/or resolution limits may yield false/negative results in certain circumstances. Suspect floor tiles containing <1% should be tested with SEM or TEM. This certificate of analysis relates only to the samples tested and to insure the integrity of the results, may only be reproduced in full. This certificate may not be used by the customer to claim product endorsement by NVLAP or any agency of the US Government. APEX Research Inc. is not responsible for the accuracy of the results for layered samples or samples comprising multiple materials. Liability limited to cost of analysis.



NVLAP Lab Code 102118-0



# Certificate of Laboratory Analysis

## Test Method, Polarized Light Microscopy (PLM)

Project: City Hall South Bldg  
Project #: EE16059

**Report To:**

Mr. Julie Robbins  
Global Environmental Engineering Inc  
10312 N. Holly Rd  
Holly, MI 48442

ARI Report # 17-68481  
Date Collected: 12/21/16  
Date Received: 01/13/17  
Date Analyzed: 01/19/17  
Date Reported: 01/19/17

Sample Information	Asbestos Type/Percent	Non-Asbestos
Lab ID #: 68481 - 42 Cust. #: CHSMM12-3 Material: 6" Black Molding Location: FS 43 Appearance: black,nonfibrous,homogenous Layer: 1 of 2	Asbestos Present: <b>NO</b> No Asbestos Observed	Other - 100%
Lab ID #: 68481 - 42a Cust. #: CHSMM12-3 Material: Glue Location: FS 43 Appearance: yellow,nonfibrous,homogenous Layer: 2 of 2	Asbestos Present: <b>NO</b> No Asbestos Observed	Other - 100%
Lab ID #: 68481 - 43 Cust. #: CHSMM13-1 Material: Yellow Carpet Adhesive Location: FS 12 Appearance: yellow,nonfibrous,homogenous Layer: 1 of 1	Asbestos Present: <b>NO</b> No Asbestos Observed	Other - 100%

For Layered Samples, each component will be analyzed and reported separately.

Robert T. Letarte Jr., Laboratory Director

Test Method EPA 600/R-93/116 was used to analyze the above samples. Matrix interference and/or resolution limits may yield false/negative results in certain circumstances. Suspect floor tiles containing <1% should be tested with SEM or TEM. This certificate of analysis relates only to the samples tested and to insure the integrity of the results, may only be reproduced in full. This certificate may not be used by the customer to claim product endorsement by NVLAP or any agency of the US Government. APEX Research Inc. is not responsible for the accuracy of the results for layered samples or samples comprising multiple materials. Liability limited to cost of analysis.



NVLAP Lab Code 102118-0



# Certificate of Laboratory Analysis

## Test Method, Polarized Light Microscopy (PLM)

Project: City Hall South Bldg  
Project #: EE16059

**Report To:**

Mr. Julie Robbins  
Global Environmental Engineering Inc  
10312 N. Holly Rd  
Holly, MI 48442

ARI Report # 17-68481  
Date Collected: 12/21/16  
Date Received: 01/13/17  
Date Analyzed: 01/19/17  
Date Reported: 01/19/17

Sample Information	Asbestos Type/Percent	Non-Asbestos
Lab ID #: 68481 - 44 Cust. #: CHSMM13-2 Material: Yellow Carpet Adhesive Location: FS 16 Appearance: yellow,nonfibrous,homogenous Layer: 1 of 1	Asbestos Present: <b>NO</b> No Asbestos Observed	Other - 100%
Lab ID #: 68481 - 45 Cust. #: CHSMM13-3 Material: Yellow Carpet Adhesive Location: FS 12 Appearance: yellow,nonfibrous,nonhomogenous Layer: 1 of 1	Asbestos Present: <b>NO</b> No Asbestos Observed	Other - 100%
Lab ID #: 68481 - 46 Cust. #: CHSMM13-4 Material: Yellow Carpet Adhesive Location: FS 42 Appearance: yellow,nonfibrous,nonhomogenous Layer: 1 of 1	Asbestos Present: <b>NO</b> No Asbestos Observed	Cellulose - 1% Other - 99%

For Layered Samples, each component will be analyzed and reported separately.

Robert T. Letarte Jr., Laboratory Director

Test Method EPA 600/R-93/116 was used to analyze the above samples. Matrix interference and/or resolution limits may yield false/negative results in certain circumstances. Suspect floor tiles containing <1% should be tested with SEM or TEM. This certificate of analysis relates only to the samples tested and to insure the integrity of the results, may only be reproduced in full. This certificate may not be used by the customer to claim product endorsement by NVLAP or any agency of the US Government. APEX Research Inc. is not responsible for the accuracy of the results for layered samples or samples comprising multiple materials. Liability limited to cost of analysis.



NVLAP Lab Code 102118-0



# Certificate of Laboratory Analysis

## Test Method, Polarized Light Microscopy (PLM)

Project: City Hall South Bldg  
Project #: EE16059

**Report To:**

Mr. Julie Robbins  
Global Environmental Engineering Inc  
10312 N. Holly Rd  
Holly, MI 48442

ARI Report # 17-68481  
Date Collected: 12/21/16  
Date Received: 01/13/17  
Date Analyzed: 01/19/17  
Date Reported: 01/19/17

Sample Information	Asbestos Type/Percent	Non-Asbestos
Lab ID #: 68481 - 47 Cust. #: CHSMM13-5 Material: Yellow Carpet Adhesive Location: FS 43 Appearance: yellow,nonfibrous,homogenous Layer: 1 of 1	Asbestos Present: <b>NO</b> No Asbestos Observed	Cellulose - 1% Other - 99%
Lab ID #: 68481 - 48 Cust. #: CHSMM13-6 Material: Yellow Carpet Adhesive Location: FS 46 Appearance: yellow,nonfibrous,homogenous Layer: 1 of 1	Asbestos Present: <b>NO</b> No Asbestos Observed	Cellulose - 1% Other - 99%
Lab ID #: 68481 - 49 Cust. #: CHSMM13-7 Material: Yellow Carpet Adhesive Location: FS 48 Appearance: yellow,nonfibrous,homogenous Layer: 1 of 1	Asbestos Present: <b>NO</b> No Asbestos Observed	Cellulose - 1% Other - 99%

For Layered Samples, each component will be analyzed and reported separately.

Robert T. Lefarte Jr., Laboratory Director

Test Method EPA 600/R-93/116 was used to analyze the above samples. Matrix interference and/or resolution limits may yield false/negative results in certain circumstances. Suspect floor tiles containing <1% should be tested with SEM or TEM. This certificate of analysis relates only to the samples tested and to insure the integrity of the results, may only be reproduced in full. This certificate may not be used by the customer to claim product endorsement by NVLAP or any agency of the US Government. APEX Research Inc. is not responsible for the accuracy of the results for layered samples or samples comprising multiple materials. Liability limited to cost of analysis.



NVLAP Lab Code 102118-0



# Certificate of Laboratory Analysis

## Test Method, Polarized Light Microscopy (PLM)

Project: City Hall South Bldg  
Project #: EE16059

**Report To:**

Mr. Julie Robbins  
Global Environmental Engineering Inc  
10312 N. Holly Rd  
Holly, MI 48442

ARI Report # 17-68481  
Date Collected: 12/21/16  
Date Received: 01/13/17  
Date Analyzed: 01/19/17  
Date Reported: 01/19/17

Sample Information	Asbestos Type/Percent	Non-Asbestos
Lab ID #: 68481 - 50 Cust. #: CHSMM14-1 Material: Drywall Location: FS 35 Appearance: white, fibrous, nonhomogenous Layer: 1 of 1	Asbestos Present: <b>NO</b> No Asbestos Observed	Cellulose - 20% Fiberglass - 5% Other - 75%
Lab ID #: 68481 - 51 Cust. #: CHSMM14-2 Material: Drywall Location: FS 37 Appearance: white, fibrous, nonhomogenous Layer: 1 of 2	Asbestos Present: <b>NO</b> No Asbestos Observed	Cellulose - 20% Fiberglass - 5% Other - 75%
Lab ID #: 68481 - 51a Cust. #: CHSMM14-2 Material: Joint Compound Location: FS 37 Appearance: white, fibrous, homogenous Layer: 2 of 2	Asbestos Present: <b>NO</b> Chrysotile - <1%	Cellulose - 1% Other - >98%

For Layered Samples, each component will be analyzed and reported separately.

Robert T. Letarte Jr., Laboratory Director

Test Method EPA 600/R-93/116 was used to analyze the above samples. Matrix interference and/or resolution limits may yield false/negative results in certain circumstances. Suspect floor tiles containing <1% should be tested with SEM or TEM. This certificate of analysis relates only to the samples tested and to insure the integrity of the results, may only be reproduced in full. This certificate may not be used by the customer to claim product endorsement by NVLAP or any agency of the US Government. APEX Research Inc. is not responsible for the accuracy of the results for layered samples or samples comprising multiple materials. Liability limited to cost of analysis.



NVLAP Lab Code 102118-0



# Certificate of Laboratory Analysis

## Test Method, Polarized Light Microscopy (PLM)

Project: City Hall South Bldg  
Project #: EE16059

**Report To:**

Mr. Julie Robbins  
Global Environmental Engineering Inc  
10312 N. Holly Rd  
Holly, MI 48442

ARI Report # 17-68481  
Date Collected: 12/21/16  
Date Received: 01/13/17  
Date Analyzed: 01/19/17  
Date Reported: 01/19/17

Sample Information	Asbestos Type/Percent	Non-Asbestos
Lab ID #: 68481 - 52 Cust. #: CHSMM14-3 Material: Drywall Location: FS 44 Appearance: white, fibrous, nonhomogenous Layer: 1 of 1	Asbestos Present: <b>NO</b> No Asbestos Observed	Cellulose - 20% Fiberglass - 5% Other - 75%
Lab ID #: 68481 - 53 Cust. #: CHSMM14-4 Material: Drywall Location: FS 46 Appearance: white, fibrous, nonhomogenous Layer: 1 of 1	Asbestos Present: <b>NO</b> No Asbestos Observed	Cellulose - 20% Fiberglass - 5% Other - 75%
Lab ID #: 68481 - 54 Cust. #: CHSMM14-5 Material: Drywall Location: FS 46 Appearance: white, fibrous, nonhomogenous Layer: 1 of 2	Asbestos Present: <b>NO</b> No Asbestos Observed	Cellulose - 20% Fiberglass - 5% Other - 75%

For Layered Samples, each component will be analyzed and reported separately.

Robert T. Letarte Jr., Laboratory Director

Test Method EPA 600/R-93/116 was used to analyze the above samples. Matrix interference and/or resolution limits may yield false/negative results in certain circumstances. Suspect floor tiles containing <1% should be tested with SEM or TEM. This certificate of analysis relates only to the samples tested and to insure the integrity of the results, may only be reproduced in full. This certificate may not be used by the customer to claim product endorsement by NVLAP or any agency of the US Government. APEX Research Inc. is not responsible for the accuracy of the results for layered samples or samples comprising multiple materials. Liability limited to cost of analysis.



NVLAP Lab Code 102118-0



# Certificate of Laboratory Analysis

## Test Method, Polarized Light Microscopy (PLM)

Project: City Hall South Bldg  
Project #: EE16059

**Report To:**

Mr. Julie Robbins  
Global Environmental Engineering Inc  
10312 N. Holly Rd  
Holly, MI 48442

ARI Report # 17-68481  
Date Collected: 12/21/16  
Date Received: 01/13/17  
Date Analyzed: 01/19/17  
Date Reported: 01/19/17

Sample Information	Asbestos Type/Percent	Non-Asbestos
Lab ID #: 68481 - 54a Cust. #: CHSMM14-5 Material: Joint Compound Location: FS 46 Appearance: white, nonfibrous, homogenous Layer: 2 of 2	Asbestos Present: <b>NO</b> No Asbestos Observed	Other - 100%
Lab ID #: 68481 - 55 Cust. #: CHSMM15-1 Material: Pink Floor Tile Location: FS 35 Appearance: brown, fibrous, homogenous Layer: 1 of 2	Asbestos Present: <b>YES</b> Chrysotile - 10%	Other - 90%
Lab ID #: 68481 - 55a Cust. #: CHSMM15-1 Material: Mastic Location: FS 35 Appearance: black, nonfibrous, homogenous Layer: 2 of 2	Asbestos Present: <b>NO</b> No Asbestos Observed	Other - 100%

For Layered Samples, each component will be analyzed and reported separately.

Robert T. Letarte Jr., Laboratory Director

Test Method EPA 600/R-93/116 was used to analyze the above samples. Matrix interference and/or resolution limits may yield false/negative results in certain circumstances. Suspect floor tiles containing <1% should be tested with SEM or TEM. This certificate of analysis relates only to the samples tested and to insure the integrity of the results, may only be reproduced in full. This certificate may not be used by the customer to claim product endorsement by NVLAP or any agency of the US Government. APEX Research Inc. is not responsible for the accuracy of the results for layered samples or samples comprising multiple materials. Liability limited to cost of analysis.



NVLAP Lab Code 102118-0





# Certificate of Laboratory Analysis

## Test Method, Polarized Light Microscopy (PLM)

Project: City Hall South Bldg  
Project #: EE16059

**Report To:**

Mr. Julie Robbins  
Global Environmental Engineering Inc  
10312 N. Holly Rd  
Holly, MI 48442

ARI Report # 17-68481  
Date Collected: 12/21/16  
Date Received: 01/13/17  
Date Analyzed: 01/19/17  
Date Reported: 01/19/17

Sample Information	Asbestos Type/Percent	Non-Asbestos
Lab ID #: 68481 - 56 Cust. #: CHSMM15-2 Material: Pink Floor Tile Location: FS 35 Appearance: Layer: 1 of 2	Asbestos Present:  NOT ANALYZED	
Lab ID #: 68481 - 56a Cust. #: CHSMM15-2 Material: Mastic Location: FS 35 Appearance: black, nonfibrous, homogenous Layer: 2 of 2	Asbestos Present: <b>NO</b> No Asbestos Observed	Other - 100%
Lab ID #: 68481 - 57 Cust. #: CHSMM15-3 Material: Pink Floor Tile Location: FS 35 Appearance: Layer: 1 of 2	Asbestos Present:  NOT ANALYZED	

For Layered Samples, each component will be analyzed and reported separately.

Robert T. Letarte Jr., Laboratory Director

Test Method EPA 600/R-93/116 was used to analyze the above samples. Matrix interference and/or resolution limits may yield false/negative results in certain circumstances. Suspect floor tiles containing <1% should be tested with SEM or TEM. This certificate of analysis relates only to the samples tested and to insure the integrity of the results, may only be reproduced in full. This certificate may not be used by the customer to claim product endorsement by NVLAP or any agency of the US Government. APEX Research Inc. is not responsible for the accuracy of the results for layered samples or samples comprising multiple materials. Liability limited to cost of analysis.



NVLAP Lab Code 102118-0



# Certificate of Laboratory Analysis

## Test Method, Polarized Light Microscopy (PLM)

Project: City Hall South Bldg  
Project #: EE16059

**Report To:**

Mr. Julie Robbins  
Global Environmental Engineering Inc  
10312 N. Holly Rd  
Holly, MI 48442

ARI Report # 17-68481  
Date Collected: 12/21/16  
Date Received: 01/13/17  
Date Analyzed: 01/19/17  
Date Reported: 01/19/17

Sample Information	Asbestos Type/Percent	Non-Asbestos
Lab ID #: 68481 - 57a Cust. #: CHSMM15-3 Material: Mastic Location: FS 35 Appearance: black, nonfibrous, homogenous Layer: 2 of 2	Asbestos Present: <b>NO</b> No Asbestos Observed	Other - 100%
Lab ID #: 68481 - 58 Cust. #: CHSMM15-4 Material: Pink Floor Tile Location: FS 35 Appearance: Layer: 1 of 2	Asbestos Present:  NOT ANALYZED	
Lab ID #: 68481 - 58a Cust. #: CHSMM15-4 Material: Mastic Location: FS 35 Appearance: black, nonfibrous, homogenous Layer: 2 of 2	Asbestos Present: <b>NO</b> No Asbestos Observed	Other - 100%

For Layered Samples, each component will be analyzed and reported separately.

Robert T. Letarte Jr., Laboratory Director

Test Method EPA 600/R-93/116 was used to analyze the above samples. Matrix interference and/or resolution limits may yield false/negative results in certain circumstances. Suspect floor tiles containing <1% should be tested with SEM or TEM. This certificate of analysis relates only to the samples tested and to insure the integrity of the results, may only be reproduced in full. This certificate may not be used by the customer to claim product endorsement by NVLAP or any agency of the US Government. APEX Research Inc. is not responsible for the accuracy of the results for layered samples or samples comprising multiple materials. Liability limited to cost of analysis.



NVLAP Lab Code 102118-0



# Certificate of Laboratory Analysis

## Test Method, Polarized Light Microscopy (PLM)

Project: City Hall South Bldg  
Project #: EE16059

**Report To:**

Mr. Julie Robbins  
Global Environmental Engineering Inc  
10312 N. Holly Rd  
Holly, MI 48442

ARI Report # 17-68481  
Date Collected: 12/21/16  
Date Received: 01/13/17  
Date Analyzed: 01/19/17  
Date Reported: 01/19/17

Sample Information	Asbestos Type/Percent	Non-Asbestos
Lab ID #: 68481 - 59 Cust. #: CHSMM15-5 Material: Pink Floor Tile Location: FS 35 Appearance: Layer: 1 of 2	Asbestos Present:  NOT ANALYZED	
Lab ID #: 68481 - 59a Cust. #: CHSMM15-5 Material: Mastic Location: FS 35 Appearance: black, nonfibrous, homogenous Layer: 2 of 2	Asbestos Present: <b>NO</b> No Asbestos Observed	Other - 100%
Lab ID #: 68481 - 60 Cust. #: CHSMM16-1 Material: Tan Textured Vinyl Drywall/Wallpaper Location: FS 36 Appearance: white, fibrous, nonhomogenous Layer: 1 of 1	Asbestos Present: <b>NO</b> No Asbestos Observed	Cellulose - 50% Other - 50%

For Layered Samples, each component will be analyzed and reported separately.

Robert T. Letarte Jr., Laboratory Director

Test Method EPA 600/R-93/116 was used to analyze the above samples. Matrix interference and/or resolution limits may yield false/negative results in certain circumstances. Suspect floor tiles containing <1% should be tested with SEM or TEM. This certificate of analysis relates only to the samples tested and to insure the integrity of the results, may only be reproduced in full. This certificate may not be used by the customer to claim product endorsement by NVLAP or any agency of the US Government. APEX Research Inc. is not responsible for the accuracy of the results for layered samples or samples comprising multiple materials. Liability limited to cost of analysis.



NVLAP Lab Code 102118-0



# Certificate of Laboratory Analysis

## Test Method, Polarized Light Microscopy (PLM)

Project: City Hall South Bldg  
Project #: EE16059

**Report To:**

Mr. Julie Robbins  
Global Environmental Engineering Inc  
10312 N. Holly Rd  
Holly, MI 48442

ARI Report # 17-68481  
Date Collected: 12/21/16  
Date Received: 01/13/17  
Date Analyzed: 01/19/17  
Date Reported: 01/19/17

Sample Information	Asbestos Type/Percent	Non-Asbestos
Lab ID #: 68481 - 61 Cust. #: CHSMM16-2 Material: Tan Textured Vinyl Drywall/Wallpaper Location: FS 36 Appearance: white, fibrous, nonhomogenous Layer: 1 of 1	Asbestos Present: <b>NO</b> No Asbestos Observed	Cellulose - 50% Other - 50%
Lab ID #: 68481 - 62 Cust. #: CHSMM16-3 Material: Tan Textured Vinyl Drywall/Wallpaper Location: FS 36 Appearance: white, fibrous, nonhomogenous Layer: 1 of 1	Asbestos Present: <b>NO</b> No Asbestos Observed	Cellulose - 50% Other - 50%
Lab ID #: 68481 - 63 Cust. #: CHSMM17-1 Material: 12" Blue Floor Tile Location: FS 37 Appearance: blue, nonfibrous, homogenous Layer: 1 of 2	Asbestos Present: <b>NO</b> No Asbestos Observed	Other - 100%

For Layered Samples, each component will be analyzed and reported separately.

Robert T. Letarte Jr., Laboratory Director

Test Method EPA 600/R-93/116 was used to analyze the above samples. Matrix interference and/or resolution limits may yield false/negative results in certain circumstances. Suspect floor tiles containing <1% should be tested with SEM or TEM. This certificate of analysis relates only to the samples tested and to insure the integrity of the results, may only be reproduced in full. This certificate may not be used by the customer to claim product endorsement by NVLAP or any agency of the US Government. APEX Research Inc. is not responsible for the accuracy of the results for layered samples or samples comprising multiple materials. Liability limited to cost of analysis.



NVLAP Lab Code 102118-0



# Certificate of Laboratory Analysis

## Test Method, Polarized Light Microscopy (PLM)

Project: City Hall South Bldg  
Project #: EE16059

**Report To:**

Mr. Julie Robbins  
Global Environmental Engineering Inc  
10312 N. Holly Rd  
Holly, MI 48442

ARI Report # 17-68481

Date Collected: 12/21/16

Date Received: 01/13/17

Date Analyzed: 01/19/17

Date Reported: 01/19/17

Sample Information	Asbestos Type/Percent	Non-Asbestos
Lab ID #: 68481 - 63a Cust. #: CHSMM17-1 Material: Glue Location: FS 37 Appearance: yellow,nonfibrous,homogenous Layer: 2 of 2	Asbestos Present: <b>NO</b> No Asbestos Observed	Other - 100%
Lab ID #: 68481 - 64 Cust. #: CHSMM17-2 Material: 12" Blue Floor Tile Location: FS 37 Appearance: blue,nonfibrous,homogenous Layer: 1 of 2	Asbestos Present: <b>NO</b> No Asbestos Observed	Other - 100%
Lab ID #: 68481 - 64a Cust. #: CHSMM17-2 Material: Glue Location: FS 37 Appearance: yellow,nonfibrous,homogenous Layer: 2 of 2	Asbestos Present: <b>NO</b> No Asbestos Observed	Other - 100%

For Layered Samples, each component will be analyzed and reported separately.

Robert T. Letarte Jr., Laboratory Director

Test Method EPA 600/R-93/116 was used to analyze the above samples. Matrix interference and/or resolution limits may yield false/negative results in certain circumstances. Suspect floor tiles containing <1% should be tested with SEM or TEM. This certificate of analysis relates only to the samples tested and to insure the integrity of the results, may only be reproduced in full. This certificate may not be used by the customer to claim product endorsement by NVLAP or any agency of the US Government. APEX Research Inc. is not responsible for the accuracy of the results for layered samples or samples comprising multiple materials. Liability limited to cost of analysis.



NVLAP Lab Code 102118-0



# Certificate of Laboratory Analysis

## Test Method, Polarized Light Microscopy (PLM)

Project: City Hall South Bldg  
Project #: EE16059

**Report To:**

Mr. Julie Robbins  
Global Environmental Engineering Inc  
10312 N. Holly Rd  
Holly, MI 48442

ARI Report # 17-68481

Date Collected: 12/21/16

Date Received: 01/13/17

Date Analyzed: 01/19/17

Date Reported: 01/19/17

Sample Information	Asbestos Type/Percent	Non-Asbestos
Lab ID #: 68481 - 65 Cust. #: CHSMM17-3 Material: 12" Blue Floor Tile Location: FS 37 Appearance: blue, nonfibrous, homogenous Layer: 1 of 2	Asbestos Present: <b>NO</b> No Asbestos Observed	Other - 100%
Lab ID #: 68481 - 65a Cust. #: CHSMM17-3 Material: Glue Location: FS 37 Appearance: yellow, nonfibrous, homogenous Layer: 2 of 2	Asbestos Present: <b>NO</b> No Asbestos Observed	Other - 100%
Lab ID #: 68481 - 66 Cust. #: CHSMM18-1 Material: 4" Grey Molding Location: FS 37 Appearance: grey, nonfibrous, homogenous Layer: 1 of 1	Asbestos Present: <b>NO</b> No Asbestos Observed	Other - 100%

For Layered Samples, each component will be analyzed and reported separately.

Robert T. Letarte Jr., Laboratory Director

Test Method EPA 600/R-93/116 was used to analyze the above samples. Matrix interference and/or resolution limits may yield false/negative results in certain circumstances. Suspect floor tiles containing <1% should be tested with SEM or TEM. This certificate of analysis relates only to the samples tested and to insure the integrity of the results, may only be reproduced in full. This certificate may not be used by the customer to claim product endorsement by NVLAP or any agency of the US Government. APEX Research Inc. is not responsible for the accuracy of the results for layered samples or samples comprising multiple materials. Liability limited to cost of analysis.



NVLAP Lab Code 102118-0



# Certificate of Laboratory Analysis

## Test Method, Polarized Light Microscopy (PLM)

Project: City Hall South Bldg  
Project #: EE16059

**Report To:**

Mr. Julie Robbins  
Global Environmental Engineering Inc  
10312 N. Holly Rd  
Holly, MI 48442

ARI Report # 17-68481  
Date Collected: 12/21/16  
Date Received: 01/13/17  
Date Analyzed: 01/19/17  
Date Reported: 01/19/17

Sample Information	Asbestos Type/Percent	Non-Asbestos
Lab ID #: 68481 - 67 Cust. #: CHSMM18-2 Material: 4" Grey Molding Location: FS 37 Appearance: grey,nonfibrous,homogenous Layer: 1 of 1	Asbestos Present: <b>NO</b> No Asbestos Observed	Other - 100%
Lab ID #: 68481 - 68 Cust. #: CHSMM18-3 Material: 4" Grey Molding Location: FS 37 Appearance: grey,nonfibrous,homogenous Layer: 1 of 1	Asbestos Present: <b>NO</b> No Asbestos Observed	Other - 100%
Lab ID #: 68481 - 69 Cust. #: CHSMM19-1 Material: Pink Vinyl Drywall/Wallpaper Location: FS 43 Appearance: pink,fibrous,nonhomogenous Layer: 1 of 1	Asbestos Present: <b>NO</b> No Asbestos Observed	Cellulose - 50% Other - 50%

For Layered Samples, each component will be analyzed and reported separately.

Robert T. Letarte Jr., Laboratory Director

Test Method EPA 600/R-93/116 was used to analyze the above samples. Matrix interference and/or resolution limits may yield false/negative results in certain circumstances. Suspect floor tiles containing <1% should be tested with SEM or TEM. This certificate of analysis relates only to the samples tested and to insure the integrity of the results, may only be reproduced in full. This certificate may not be used by the customer to claim product endorsement by NVLAP or any agency of the US Government. APEX Research Inc. is not responsible for the accuracy of the results for layered samples or samples comprising multiple materials. Liability limited to cost of analysis.



NVLAP Lab Code 102118-0





# Certificate of Laboratory Analysis

## Test Method, Polarized Light Microscopy (PLM)

Project: City Hall South Bldg  
Project #: EE16059

**Report To:**

Mr. Julie Robbins  
Global Environmental Engineering Inc  
10312 N. Holly Rd  
Holly, MI 48442

ARI Report # 17-68481  
Date Collected: 12/21/16  
Date Received: 01/13/17  
Date Analyzed: 01/19/17  
Date Reported: 01/19/17

Sample Information	Asbestos Type/Percent	Non-Asbestos
Lab ID #: 68481 - 70 Cust. #: CHSMM19-2 Material: Pink Vinyl Drywall/Wallpaper Location: FS 43 Appearance: pink, fibrous, nonhomogenous Layer: 1 of 1	Asbestos Present: <b>NO</b> No Asbestos Observed	Cellulose - 50% Other - 50%
Lab ID #: 68481 - 71 Cust. #: CHSMM19-3 Material: Pink Vinyl Drywall/Wallpaper Location: FS 43 Appearance: pink, fibrous, nonhomogenous Layer: 1 of 1	Asbestos Present: <b>NO</b> No Asbestos Observed	Cellulose - 50% Other - 50%
Lab ID #: 68481 - 72 Cust. #: CHSMM19-4 Material: Pink Vinyl Drywall/Wallpaper Location: FS 43 Appearance: pink, fibrous, nonhomogenous Layer: 1 of 1	Asbestos Present: <b>NO</b> No Asbestos Observed	Cellulose - 50% Other - 50%

For Layered Samples, each component will be analyzed and reported separately.

Robert T. Letarte Jr., Laboratory Director

Test Method EPA 600/R-93/116 was used to analyze the above samples. Matrix interference and/or resolution limits may yield false/negative results in certain circumstances. Suspect floor tiles containing <1% should be tested with SEM or TEM. This certificate of analysis relates only to the samples tested and to insure the integrity of the results, may only be reproduced in full. This certificate may not be used by the customer to claim product endorsement by NVLAP or any agency of the US Government. APEX Research Inc. is not responsible for the accuracy of the results for layered samples or samples comprising multiple materials. Liability limited to cost of analysis.



NVLAP Lab Code 102118-0



# Certificate of Laboratory Analysis

## Test Method, Polarized Light Microscopy (PLM)

Project: City Hall South Bldg  
Project #: EE16059

**Report To:**

Mr. Julie Robbins  
Global Environmental Engineering Inc  
10312 N. Holly Rd  
Holly, MI 48442

ARI Report # 17-68481  
Date Collected: 12/21/16  
Date Received: 01/13/17  
Date Analyzed: 01/19/17  
Date Reported: 01/19/17

Sample Information	Asbestos Type/Percent	Non-Asbestos
Lab ID #: 68481 - 73 Cust. #: CHSMM19-5 Material: Pink Vinyl Drywall/Wallpaper Location: FS 43 Appearance: pink, fibrous, nonhomogenous Layer: 1 of 1	Asbestos Present: <b>NO</b> No Asbestos Observed	Cellulose - 50% Other - 50%
Lab ID #: 68481 - 74 Cust. #: CHSMM20-1 Material: White Vinyl Drywall Location: FS 43 Appearance: white, fibrous, nonhomogenous Layer: 1 of 1	Asbestos Present: <b>NO</b> No Asbestos Observed	Cellulose - 40% Other - 60%
Lab ID #: 68481 - 75 Cust. #: CHSMM20-2 Material: White Vinyl Drywall Location: FS 43 Appearance: white, fibrous, nonhomogenous Layer: 1 of 1	Asbestos Present: <b>NO</b> No Asbestos Observed	Cellulose - 45% Other - 55%

For Layered Samples, each component will be analyzed and reported separately.

Robert T. Letarte Jr., Laboratory Director

Test Method EPA 600/R-93/116 was used to analyze the above samples. Matrix interference and/or resolution limits may yield false/negative results in certain circumstances. Suspect floor tiles containing <1% should be tested with SEM or TEM. This certificate of analysis relates only to the samples tested and to insure the integrity of the results, may only be reproduced in full. This certificate may not be used by the customer to claim product endorsement by NVLAP or any agency of the US Government. APEX Research Inc. is not responsible for the accuracy of the results for layered samples or samples comprising multiple materials. Liability limited to cost of analysis.



NVLAP Lab Code 102118-0



# Certificate of Laboratory Analysis

## Test Method, Polarized Light Microscopy (PLM)

Project: City Hall South Bldg  
Project #: EE16059

**Report To:**

Mr. Julie Robbins  
Global Environmental Engineering Inc  
10312 N. Holly Rd  
Holly, MI 48442

ARI Report # 17-68481  
Date Collected: 12/21/16  
Date Received: 01/13/17  
Date Analyzed: 01/19/17  
Date Reported: 01/19/17

Sample Information	Asbestos Type/Percent	Non-Asbestos
Lab ID #: 68481 - 76 Cust. #: CHSMM20-3 Material: White Vinyl Drywall Location: FS 43 Appearance: white, fibrous, nonhomogenous Layer: 1 of 1	Asbestos Present: <b>NO</b> No Asbestos Observed	Cellulose - 45% Other - 55%
Lab ID #: 68481 - 77 Cust. #: CHSMM21-1 Material: 2'x2' White Ceiling Tile, Perforations Location: FS 44 Appearance: white, fibrous, homogenous Layer: 1 of 1	Asbestos Present: <b>NO</b> No Asbestos Observed	Cellulose - 25% Mineral Wool - 50% Other - 25%
Lab ID #: 68481 - 78 Cust. #: CHSMM21-2 Material: 2'x2' White Ceiling Tile, Perforations Location: FS 44 Appearance: white, fibrous, homogenous Layer: 1 of 1	Asbestos Present: <b>NO</b> No Asbestos Observed	Cellulose - 25% Mineral Wool - 50% Other - 25%

For Layered Samples, each component will be analyzed and reported separately.

Robert T. Lefarte Jr., Laboratory Director

Test Method EPA 600/R-93/116 was used to analyze the above samples. Matrix interference and/or resolution limits may yield false negative results in certain circumstances. Suspect floor tiles containing <1% should be tested with SEM or TEM. This certificate of analysis relates only to the samples tested and to insure the integrity of the results, may only be reproduced in full. This certificate may not be used by the customer to claim product endorsement by NVLAP or any agency of the US Government. APEX Research Inc. is not responsible for the accuracy of the results for layered samples or samples comprising multiple materials. Liability limited to cost of analysis.



NVLAP Lab Code 102118-0



# Certificate of Laboratory Analysis

## Test Method, Polarized Light Microscopy (PLM)

Project: City Hall South Bldg  
Project #: EE16059

**Report To:**

Mr. Julie Robbins  
Global Environmental Engineering Inc  
10312 N. Holly Rd  
Holly, MI 48442

ARI Report # 17-68481  
Date Collected: 12/21/16  
Date Received: 01/13/17  
Date Analyzed: 01/19/17  
Date Reported: 01/19/17

Sample Information	Asbestos Type/Percent	Non-Asbestos
Lab ID #: 68481 - 79 Cust. #: CHSMM21-3 Material: 2'x2' White Ceiling Tile, Perforations Location: FS 44 Appearance: white, fibrous, homogenous Layer: 1 of 1	Asbestos Present: <b>NO</b> No Asbestos Observed	Cellulose - 30% Mineral Wool - 50% Other - 20%
Lab ID #: 68481 - 80 Cust. #: CHSMM22-1 Material: Pink Fuzzy Wall Cover Location: FS 44 Appearance: white, fibrous, homogenous Layer: 1 of 1	Asbestos Present: <b>NO</b> No Asbestos Observed	Synthetic - 70% Other - 30%
Lab ID #: 68481 - 81 Cust. #: CHSMM22-2 Material: Pink Fuzzy Wall Cover Location: FS 44 Appearance: white, fibrous, homogenous Layer: 1 of 1	Asbestos Present: <b>NO</b> No Asbestos Observed	Synthetic - 70% Other - 30%

For Layered Samples, each component will be analyzed and reported separately.

Robert T. Letarte Jr., Laboratory Director

Test Method EPA 600/R-93/116 was used to analyze the above samples. Matrix interference and/or resolution limits may yield false/negative results in certain circumstances. Suspect floor tiles containing <1% should be tested with SEM or TEM. This certificate of analysis relates only to the samples tested and to insure the integrity of the results, may only be reproduced in full. This certificate may not be used by the customer to claim product endorsement by NVLAP or any agency of the US Government. APEX Research Inc. is not responsible for the accuracy of the results for layered samples or samples comprising multiple materials. Liability limited to cost of analysis.



NVLAP Lab Code 102118-0



# Certificate of Laboratory Analysis

## Test Method, Polarized Light Microscopy (PLM)

Project: City Hall South Bldg  
Project #: EE16059

**Report To:**

Mr. Julie Robbins  
Global Environmental Engineering Inc  
10312 N. Holly Rd  
Holly, MI 48442

ARI Report # 17-68481  
Date Collected: 12/21/16  
Date Received: 01/13/17  
Date Analyzed: 01/19/17  
Date Reported: 01/19/17

Sample Information	Asbestos Type/Percent	Non-Asbestos
Lab ID #: 68481 - 82 Cust. #: CHSMM22-3 Material: Pink Fuzzy Wall Cover Location: FS 44 Appearance: white, fibrous, homogenous Layer: 1 of 1	Asbestos Present: <b>NO</b> No Asbestos Observed	Synthetic - 70% Other - 30%
Lab ID #: 68481 - 83 Cust. #: CHSMM23-1 Material: Glue Location: FS 46 Appearance: yellow, nonfibrous, homogenous Layer: 1 of 3	Asbestos Present: <b>NO</b> No Asbestos Observed	Other - 100%
Lab ID #: 68481 - 83a Cust. #: CHSMM23-1 Material: 9" Tan Floor Tile Location: FS 46 Appearance: grey, fibrous, homogenous Layer: 2 of 3	Asbestos Present: <b>YES</b> Chrysotile - 10%	Other - 90%

For Layered Samples, each component will be analyzed and reported separately.

Robert T. Letarte Jr., Laboratory Director

Test Method EPA 600/R-93/116 was used to analyze the above samples. Matrix interference and/or resolution limits may yield false/negative results in certain circumstances. Suspect floor tiles containing <1% should be tested with SEM or TEM. This certificate of analysis relates only to the samples tested and to insure the integrity of the results, may only be reproduced in full. This certificate may not be used by the customer to claim product endorsement by NVLAP or any agency of the US Government. APEX Research Inc. is not responsible for the accuracy of the results for layered samples or samples comprising multiple materials. Liability limited to cost of analysis.



NVLAP Lab Code 102118-0



# Certificate of Laboratory Analysis

## Test Method, Polarized Light Microscopy (PLM)

Project: City Hall South Bldg  
Project #: EE16059

**Report To:**

Mr. Julie Robbins  
Global Environmental Engineering Inc  
10312 N. Holly Rd  
Holly, MI 48442

ARI Report # 17-68481  
Date Collected: 12/21/16  
Date Received: 01/13/17  
Date Analyzed: 01/19/17  
Date Reported: 01/19/17

Sample Information	Asbestos Type/Percent	Non-Asbestos
Lab ID #: 68481 - 83b Cust. #: CHSMM23-1 Material: Mastic Location: FS 46 Appearance: black, nonfibrous, homogenous Layer: 3 of 3	Asbestos Present: <b>NO</b> No Asbestos Observed	Other - 100%
Lab ID #: 68481 - 84 Cust. #: CHSMM23-2 Material: Glue Location: FS 46 Appearance: yellow, nonfibrous, homogenous Layer: 1 of 3	Asbestos Present: <b>NO</b> No Asbestos Observed	Other - 100%
Lab ID #: 68481 - 84a Cust. #: CHSMM23-2 Material: 9" Tan Floor Tile Location: FS 46 Appearance: Layer: 2 of 3	Asbestos Present:  NOT ANALYZED	

For Layered Samples, each component will be analyzed and reported separately.

Robert T. Letarte Jr., Laboratory Director

Test Method EPA 600/R-93/116 was used to analyze the above samples. Matrix interference and/or resolution limits may yield false/negative results in certain circumstances. Suspect floor tiles containing <1% should be tested with SEM or TEM. This certificate of analysis relates only to the samples tested and to insure the integrity of the results, may only be reproduced in full. This certificate may not be used by the customer to claim product endorsement by NVLAP or any agency of the US Government. APEX Research Inc. is not responsible for the accuracy of the results for layered samples or samples comprising multiple materials. Liability limited to cost of analysis.



NVLAP Lab Code 102118-0



# Certificate of Laboratory Analysis

## Test Method, Polarized Light Microscopy (PLM)

Project: City Hall South Bldg  
Project #: EE16059

**Report To:**

Mr. Julie Robbins  
Global Environmental Engineering Inc  
10312 N. Holly Rd  
Holly, MI 48442

ARI Report # 17-68481

Date Collected: 12/21/16

Date Received: 01/13/17

Date Analyzed: 01/19/17

Date Reported: 01/19/17

**Sample Information****Asbestos Type/Percent****Non-Asbestos**

Lab ID #: 68481 - 84b  
Cust. #: CHSMM23-2  
Material: Mastic  
Location: FS 46  
Appearance: black, nonfibrous, homogenous  
Layer: 3 of 3

Asbestos Present: **NO**  
No Asbestos Observed

Other - 100%

Lab ID #: 68481 - 85  
Cust. #: CHSMM23-3  
Material: Glue  
Location: FS 46  
Appearance: yellow, nonfibrous, homogenous  
Layer: 1 of 2

Asbestos Present: **NO**  
No Asbestos Observed

Other - 100%

Lab ID #: 68481 - 85a  
Cust. #: CHSMM23-3  
Material: 9" Tan Floor Tile  
Location: FS 46  
Appearance:  
Layer: 2 of 2

Asbestos Present:  
  
**NOT ANALYZED**

For Layered Samples, each component will be analyzed and reported separately.

Robert T. Lefarte Jr., Laboratory Director

Test Method EPA 600/R-93/116 was used to analyze the above samples. Matrix interference and/or resolution limits may yield false negative results in certain circumstances. Suspect floor tiles containing <1% should be tested with SEM or TEM. This certificate of analysis relates only to the samples tested and to insure the integrity of the results, may only be reproduced in full. This certificate may not be used by the customer to claim product endorsement by NVLAP or any agency of the US Government. APEX Research Inc. is not responsible for the accuracy of the results for layered samples or samples comprising multiple materials. Liability limited to cost of analysis.



NVLAP Lab Code 102118-0





# Certificate of Laboratory Analysis

## Test Method, Polarized Light Microscopy (PLM)

Project: City Hall South Bldg  
Project #: EE16059

**Report To:**

Mr. Julie Robbins  
Global Environmental Engineering Inc  
10312 N. Holly Rd  
Holly, MI 48442

ARI Report # 17-68481  
Date Collected: 12/21/16  
Date Received: 01/13/17  
Date Analyzed: 01/19/17  
Date Reported: 01/19/17

Sample Information	Asbestos Type/Percent	Non-Asbestos
Lab ID #: 68481 - 86 Cust. #: CHSMM23-4 Material: Glue Location: FS 46 Appearance: yellow, nonfibrous, homogenous Layer: 1 of 3	Asbestos Present: <b>NO</b> No Asbestos Observed	Other - 100%
Lab ID #: 68481 - 86a Cust. #: CHSMM23-4 Material: 9" Tan Floor Tile Location: FS 46 Appearance: Layer: 2 of 3	Asbestos Present:  NOT ANALYZED	
Lab ID #: 68481 - 86b Cust. #: CHSMM23-4 Material: Mastic Location: FS 46 Appearance: black, nonfibrous, homogenous Layer: 3 of 3	Asbestos Present: <b>NO</b> No Asbestos Observed	Other - 100%

For Layered Samples, each component will be analyzed and reported separately.

Robert T. Letarte Jr., Laboratory Director

Test Method EPA 600/R-93/116 was used to analyze the above samples. Matrix interference and/or resolution limits may yield false/negative results in certain circumstances. Suspect floor tiles containing <1% should be tested with SEM or TEM. This certificate of analysis relates only to the samples tested and to insure the integrity of the results, may only be reproduced in full. This certificate may not be used by the customer to claim product endorsement by NVLAP or any agency of the US Government. APEX Research Inc. is not responsible for the accuracy of the results for layered samples or samples comprising multiple materials. Liability limited to cost of analysis.



NVLAP Lab Code 102118-0



# Certificate of Laboratory Analysis

## Test Method, Polarized Light Microscopy (PLM)

Project: City Hall South Bldg  
Project #: EE16059

**Report To:**

Mr. Julie Robbins  
Global Environmental Engineering Inc  
10312 N. Holly Rd  
Holly, MI 48442

ARI Report # 17-68481

Date Collected: 12/21/16

Date Received: 01/13/17

Date Analyzed: 01/19/17

Date Reported: 01/19/17

Sample Information	Asbestos Type/Percent	Non-Asbestos
Lab ID #: 68481 - 87 Cust. #: CHSMM23-5 Material: Glue Location: FS 46 Appearance: yellow, nonfibrous, homogenous Layer: 1 of 3	Asbestos Present: <b>NO</b> No Asbestos Observed	Other - 100%
Lab ID #: 68481 - 87a Cust. #: CHSMM23-5 Material: 9" Tan Floor Tile Location: FS 46 Appearance: Layer: 2 of 3	Asbestos Present:  NOT ANALYZED	
Lab ID #: 68481 - 87b Cust. #: CHSMM23-5 Material: Mastic Location: FS 46 Appearance: black, nonfibrous, homogenous Layer: 3 of 3	Asbestos Present: <b>NO</b> No Asbestos Observed	Other - 100%

For Layered Samples, each component will be analyzed and reported separately.

Robert T. Letarte Jr., Laboratory Director

Test Method EPA 600/R-93/116 was used to analyze the above samples. Matrix interference and/or resolution limits may yield false/negative results in certain circumstances. Suspect floor tiles containing <1% should be tested with SEM or TEM. This certificate of analysis relates only to the samples tested and to insure the integrity of the results, may only be reproduced in full. This certificate may not be used by the customer to claim product endorsement by NVLAP or any agency of the US Government. APEX Research Inc. is not responsible for the accuracy of the results for layered samples or samples comprising multiple materials. Liability limited to cost of analysis.



NVLAP Lab Code 102118-0



# Certificate of Laboratory Analysis

## Test Method, Polarized Light Microscopy (PLM)

Project: City Hall South Bldg  
Project #: EE16059

**Report To:**

Mr. Julie Robbins  
Global Environmental Engineering Inc  
10312 N. Holly Rd  
Holly, MI 48442

ARI Report # 17-68481

Date Collected: 12/21/16

Date Received: 01/13/17

Date Analyzed: 01/19/17

Date Reported: 01/19/17

Sample Information	Asbestos Type/Percent	Non-Asbestos
Lab ID #: 68481 - 88 Cust. #: CHSMM24-1 Material: 2'x4' White Ceiling Tile, Small Holes Location: FS 15 Appearance: beige, fibrous, homogenous Layer: 1 of 1	Asbestos Present: <b>NO</b> No Asbestos Observed	Cellulose - 40% Mineral Wool - 30% Other - 30%
Lab ID #: 68481 - 89 Cust. #: CHSMM24-2 Material: 2'x4' White Ceiling Tile, Small Holes Location: FS 15 Appearance: beige, fibrous, homogenous Layer: 1 of 1	Asbestos Present: <b>NO</b> No Asbestos Observed	Cellulose - 40% Mineral Wool - 30% Other - 30%
Lab ID #: 68481 - 90 Cust. #: CHSMM24-3 Material: 2'x4' White Ceiling Tile, Small Holes Location: FS 15 Appearance: beige, fibrous, homogenous Layer: 1 of 1	Asbestos Present: <b>NO</b> No Asbestos Observed	Cellulose - 40% Mineral Wool - 30% Other - 30%

For Layered Samples, each component will be analyzed and reported separately.

Robert T. Letarte Jr., Laboratory Director

Test Method EPA 600/R-93/116 was used to analyze the above samples. Matrix interference and/or resolution limits may yield false/negative results in certain circumstances. Suspect floor tiles containing <1% should be tested with SEM or TEM. This certificate of analysis relates only to the samples tested and to insure the integrity of the results, may only be reproduced in full. This certificate may not be used by the customer to claim product endorsement by NVLAP or any agency of the US Government. APEX Research Inc. is not responsible for the accuracy of the results for layered samples or samples comprising multiple materials. Liability limited to cost of analysis.



NVLAP Lab Code 102118-0



# Certificate of Laboratory Analysis

## Test Method, Polarized Light Microscopy (PLM)

Project: City Hall South Bldg  
Project #: EE16059

**Report To:**

Mr. Julie Robbins  
Global Environmental Engineering Inc  
10312 N. Holly Rd  
Holly, MI 48442

ARI Report # 17-68481  
Date Collected: 12/21/16  
Date Received: 01/13/17  
Date Analyzed: 01/19/17  
Date Reported: 01/19/17

Sample Information	Asbestos Type/Percent	Non-Asbestos
Lab ID #: 68481 - 91 Cust. #: CHSMM25-1 Material: Glue Location: FS 51 Appearance: yellow, nonfibrous, homogenous Layer: 1 of 3	Asbestos Present: <b>NO</b> No Asbestos Observed	Other - 100%
Lab ID #: 68481 - 91a Cust. #: CHSMM25-1 Material: 9" Grey Floor Tile, Tan Streaks Location: FS 51 Appearance: grey, fibrous, homogenous Layer: 2 of 3	Asbestos Present: <b>YES</b> Chrysotile - 10%	Other - 90%
Lab ID #: 68481 - 91b Cust. #: CHSMM25-1 Material: Mastic Location: FS 51 Appearance: black, nonfibrous, homogenous Layer: 3 of 3	Asbestos Present: <b>NO</b> No Asbestos Observed	Other - 100%

For Layered Samples, each component will be analyzed and reported separately.

Robert T. Letarte Jr., Laboratory Director

Test Method EPA 600/R-93/116 was used to analyze the above samples. Matrix interference and/or resolution limits may yield false/negative results in certain circumstances. Suspect floor tiles containing <1% should be tested with SEM or TEM. This certificate of analysis relates only to the samples tested and to insure the integrity of the results, may only be reproduced in full. This certificate may not be used by the customer to claim product endorsement by NVLAP or any agency of the US Government. APEX Research Inc. is not responsible for the accuracy of the results for layered samples or samples comprising multiple materials. Liability limited to cost of analysis.



NVLAP Lab Code 102118-0



# Certificate of Laboratory Analysis

## Test Method, Polarized Light Microscopy (PLM)

Project: City Hall South Bldg  
Project #: EE16059

**Report To:**

Mr. Julie Robbins  
Global Environmental Engineering Inc  
10312 N. Holly Rd  
Holly, MI 48442

ARI Report # 17-68481

Date Collected: 12/21/16

Date Received: 01/13/17

Date Analyzed: 01/19/17

Date Reported: 01/19/17

Sample Information	Asbestos Type/Percent	Non-Asbestos
Lab ID #: 68481 - 92 Cust. #: CHSMM25-2 Material: Glue Location: FS 51 Appearance: yellow, nonfibrous, homogenous Layer: 1 of 3	Asbestos Present: <b>NO</b> No Asbestos Observed	Other - 100%
Lab ID #: 68481 - 92a Cust. #: CHSMM25-2 Material: 9" Grey Floor Tile, Tan Streaks Location: FS 51 Appearance: Layer: 2 of 3	Asbestos Present:  NOT ANALYZED	
Lab ID #: 68481 - 92b Cust. #: CHSMM25-2 Material: Mastic Location: FS 51 Appearance: black, nonfibrous, homogenous Layer: 3 of 3	Asbestos Present: <b>NO</b> No Asbestos Observed	Other - 100%

For Layered Samples, each component will be analyzed and reported separately.

Robert T. Letarte Jr., Laboratory Director

Test Method EPA 600/R-93/116 was used to analyze the above samples. Matrix interference and/or resolution limits may yield false/negative results in certain circumstances. Suspect floor tiles containing <1% should be tested with SEM or TEM. This certificate of analysis relates only to the samples tested and to insure the integrity of the results, may only be reproduced in full. This certificate may not be used by the customer to claim product endorsement by NVLAP or any agency of the US Government. APEX Research Inc. is not responsible for the accuracy of the results for layered samples or samples comprising multiple materials. Liability limited to cost of analysis.



NVLAP Lab Code 102118-0



# Certificate of Laboratory Analysis

## Test Method, Polarized Light Microscopy (PLM)

Project: City Hall South Bldg  
Project #: EE16059

**Report To:**

Mr. Julie Robbins  
Global Environmental Engineering Inc  
10312 N. Holly Rd  
Holly, MI 48442

ARI Report # 17-68481  
Date Collected: 12/21/16  
Date Received: 01/13/17  
Date Analyzed: 01/19/17  
Date Reported: 01/19/17

Sample Information	Asbestos Type/Percent	Non-Asbestos
Lab ID #: 68481 - 93 Cust. #: CHSMM25-3 Material: Glue Location: FS 52 Appearance: yellow, nonfibrous, homogenous Layer: 1 of 3	Asbestos Present: <b>NO</b> No Asbestos Observed	Other - 100%
Lab ID #: 68481 - 93a Cust. #: CHSMM25-3 Material: 9" Grey Floor Tile, Tan Streaks Location: FS 52 Appearance: Layer: 2 of 3	Asbestos Present:  NOT ANALYZED	
Lab ID #: 68481 - 93b Cust. #: CHSMM25-3 Material: Mastic Location: FS 52 Appearance: black, nonfibrous, homogenous Layer: 3 of 3	Asbestos Present: <b>NO</b> No Asbestos Observed	Other - 100%

For Layered Samples, each component will be analyzed and reported separately.

Robert T. Letarte Jr., Laboratory Director

Test Method EPA 600/R-93/116 was used to analyze the above samples. Matrix interference and/or resolution limits may yield false/negative results in certain circumstances. Suspect floor tiles containing <1% should be tested with SEM or TEM. This certificate of analysis relates only to the samples tested and to insure the integrity of the results, may only be reproduced in full. This certificate may not be used by the customer to claim product endorsement by NVLAP or any agency of the US Government. APEX Research Inc. is not responsible for the accuracy of the results for layered samples or samples comprising multiple materials. Liability limited to cost of analysis.



NVLAP Lab Code 102118-0



# Certificate of Laboratory Analysis

## Test Method, Polarized Light Microscopy (PLM)

Project: City Hall South Bldg  
Project #: EE16059

**Report To:**

Mr. Julie Robbins  
Global Environmental Engineering Inc  
10312 N. Holly Rd  
Holly, MI 48442

ARI Report # 17-68481  
Date Collected: 12/21/16  
Date Received: 01/13/17  
Date Analyzed: 01/19/17  
Date Reported: 01/19/17

Sample Information	Asbestos Type/Percent	Non-Asbestos
Lab ID #: 68481 - 94 Cust. #: CHSMM26-1 Material: 1'x1' White Ceiling Tile, Holes Location: FS 51 Appearance: brown, fibrous, homogenous Layer: 1 of 1	Asbestos Present: <b>NO</b> No Asbestos Observed	Cellulose - 80% Other - 20%
Lab ID #: 68481 - 95 Cust. #: CHSMM26-2 Material: 1'x1' White Ceiling Tile, Holes Location: FS 51 Appearance: brown, fibrous, homogenous Layer: 1 of 1	Asbestos Present: <b>NO</b> No Asbestos Observed	Cellulose - 80% Other - 20%
Lab ID #: 68481 - 96 Cust. #: CHSMM26-3 Material: 1'x1' White Ceiling Tile, Holes Location: FS 51 Appearance: brown, fibrous, homogenous Layer: 1 of 1	Asbestos Present: <b>NO</b> No Asbestos Observed	Cellulose - 80% Other - 20%

For Layered Samples, each component will be analyzed and reported separately.

Robert T. Letarte Jr., Laboratory Director

Test Method EPA 600/R-93/116 was used to analyze the above samples. Matrix interference and/or resolution limits may yield false/negative results in certain circumstances. Suspect floor tiles containing <1% should be tested with SEM or TEM. This certificate of analysis relates only to the samples tested and to insure the integrity of the results, may only be reproduced in full. This certificate may not be used by the customer to claim product endorsement by NVLAP or any agency of the US Government. APEX Research Inc. is not responsible for the accuracy of the results for layered samples or samples comprising multiple materials. Liability limited to cost of analysis.



NVLAP Lab Code 102118-0





# Certificate of Laboratory Analysis

## Test Method, Polarized Light Microscopy (PLM)

Project: City Hall South Bldg  
Project #: EE16059

**Report To:**

Mr. Julie Robbins  
Global Environmental Engineering Inc  
10312 N. Holly Rd  
Holly, MI 48442

ARI Report # 17-68481

Date Collected: 12/21/16

Date Received: 01/13/17

Date Analyzed: 01/19/17

Date Reported: 01/19/17

**Sample Information****Asbestos Type/Percent****Non-Asbestos**

Lab ID #: 68481 - 97  
Cust. #: CHSMM27-1  
Material: Glue  
Location: FS 29  
Appearance: yellow,nonfibrous,homogenous  
Layer: 1 of 3

Asbestos Present: **NO**  
No Asbestos Observed

Other - 100%

Lab ID #: 68481 - 97a  
Cust. #: CHSMM27-1  
Material: 9" Green Floor Tile  
Location: FS 29  
Appearance: grey,nonfibrous,homogenous  
Layer: 2 of 3

Asbestos Present: **NO**  
No Asbestos Observed

Other - 100%

Lab ID #: 68481 - 97b  
Cust. #: CHSMM27-1  
Material: Glue  
Location: FS 29  
Appearance: yellow,nonfibrous,homogenous  
Layer: 3 of 3

Asbestos Present: **NO**  
No Asbestos Observed

Other - 100%

For Layered Samples, each component will be analyzed and reported separately.

Robert T. Letarte Jr., Laboratory Director

Test Method EPA 600/R-93/116 was used to analyze the above samples. Matrix interference and/or resolution limits may yield false/negative results in certain circumstances. Suspect floor tiles containing <1% should be tested with SEM or TEM. This certificate of analysis relates only to the samples tested and to insure the integrity of the results, may only be reproduced in full. This certificate may not be used by the customer to claim product endorsement by NVLAP or any agency of the US Government. APEX Research Inc. is not responsible for the accuracy of the results for layered samples or samples comprising multiple materials. Liability limited to cost of analysis.



NVLAP Lab Code 102118-0



# Certificate of Laboratory Analysis

## Test Method, Polarized Light Microscopy (PLM)

Project: City Hall South Bldg  
Project #: EE16059

**Report To:**

Mr. Julie Robbins  
Global Environmental Engineering Inc  
10312 N. Holly Rd  
Holly, MI 48442

ARI Report # 17-68481  
Date Collected: 12/21/16  
Date Received: 01/13/17  
Date Analyzed: 01/19/17  
Date Reported: 01/19/17

Sample Information	Asbestos Type/Percent	Non-Asbestos
Lab ID #: 68481 - 98 Cust. #: CHSMM27-2 Material: Glue Location: FS 30 Appearance: yellow,nonfibrous,homogenous Layer: 1 of 3	Asbestos Present: <b>NO</b> No Asbestos Observed	Other - 100%
Lab ID #: 68481 - 98a Cust. #: CHSMM27-2 Material: 9" Green Floor Tile Location: FS 30 Appearance: grey,nonfibrous,homogenous Layer: 2 of 3	Asbestos Present: <b>NO</b> No Asbestos Observed	Other - 100%
Lab ID #: 68481 - 98b Cust. #: CHSMM27-2 Material: Glue Location: FS 30 Appearance: yellow,nonfibrous,homogenous Layer: 3 of 3	Asbestos Present: <b>NO</b> No Asbestos Observed	Other - 100%

For Layered Samples, each component will be analyzed and reported separately.

Robert T. Letarte Jr., Laboratory Director

Test Method EPA 600/R-93/116 was used to analyze the above samples. Matrix interference and/or resolution limits may yield false/negative results in certain circumstances. Suspect floor tiles containing <1% should be tested with SEM or TEM. This certificate of analysis relates only to the samples tested and to insure the integrity of the results, may only be reproduced in full. This certificate may not be used by the customer to claim product endorsement by NVLAP or any agency of the US Government. APEX Research Inc. is not responsible for the accuracy of the results for layered samples or samples comprising multiple materials. Liability limited to cost of analysis.



NVLAP Lab Code 102118-0



# Certificate of Laboratory Analysis

## Test Method, Polarized Light Microscopy (PLM)

Project: City Hall South Bldg  
Project #: EE16059

**Report To:**

Mr. Julie Robbins  
Global Environmental Engineering Inc  
10312 N. Holly Rd  
Holly, MI 48442

ARI Report # 17-68481  
Date Collected: 12/21/16  
Date Received: 01/13/17  
Date Analyzed: 01/19/17  
Date Reported: 01/19/17

Sample Information	Asbestos Type/Percent	Non-Asbestos
Lab ID #: 68481 - 99 Cust. #: CHSMM27-3 Material: Glue Location: FS 30 Appearance: yellow,nonfibrous,homogenous Layer: 1 of 3	Asbestos Present: <b>NO</b> No Asbestos Observed	Other - 100%
Lab ID #: 68481 - 99a Cust. #: CHSMM27-3 Material: 9" Green Floor Tile Location: FS 30 Appearance: grey,nonfibrous,homogenous Layer: 2 of 3	Asbestos Present: <b>NO</b> No Asbestos Observed	Other - 100%
Lab ID #: 68481 - 99b Cust. #: CHSMM27-3 Material: Glue Location: FS 30 Appearance: yellow,nonfibrous,homogenous Layer: 3 of 3	Asbestos Present: <b>NO</b> No Asbestos Observed	Other - 100%

For Layered Samples, each component will be analyzed and reported separately.

Robert T. Letarte Jr., Laboratory Director

Test Method EPA 600/R-93/116 was used to analyze the above samples. Matrix interference and/or resolution limits may yield false/negative results in certain circumstances. Suspect floor tiles containing <1% should be tested with SEM or TEM. This certificate of analysis relates only to the samples tested and to insure the integrity of the results, may only be reproduced in full. This certificate may not be used by the customer to claim product endorsement by NVLAP or any agency of the US Government. APEX Research Inc. is not responsible for the accuracy of the results for layered samples or samples comprising multiple materials. Liability limited to cost of analysis.



NVLAP Lab Code 102118-0



# Certificate of Laboratory Analysis

## Test Method, Polarized Light Microscopy (PLM)

Project: City Hall South Bldg  
Project #: EE16059

**Report To:**

Mr. Julie Robbins  
Global Environmental Engineering Inc  
10312 N. Holly Rd  
Holly, MI 48442

ARI Report # 17-68481  
Date Collected: 12/21/16  
Date Received: 01/13/17  
Date Analyzed: 01/19/17  
Date Reported: 01/19/17

Sample Information	Asbestos Type/Percent	Non-Asbestos
Lab ID #: 68481 - 100 Cust. #: CHS SM1-1 Material: Plaster Finish Coat Location: FS 1 Appearance: white,nonfibrous,homogenous Layer: 1 of 2	Asbestos Present: <b>NO</b> No Asbestos Observed	Other - 100%
Lab ID #: 68481 - 100a Cust. #: CHS SM1-1 Material: Plaster Base Coat Location: FS 1 Appearance: grey,fibrous,homogenous Layer: 2 of 2	Asbestos Present: <b>NO</b> No Asbestos Observed	Cellulose - 2% Other - 98%
Lab ID #: 68481 - 101 Cust. #: CHS SM1-2 Material: Plaster Finish Coat Location: FS 2 Appearance: white,nonfibrous,homogenous Layer: 1 of 2	Asbestos Present: <b>NO</b> No Asbestos Observed	Other - 100%

For Layered Samples, each component will be analyzed and reported separately.

Robert T. Letarte Jr., Laboratory Director

Test Method EPA 600/R-93/116 was used to analyze the above samples. Matrix interference and/or resolution limits may yield false/negative results in certain circumstances. Suspect floor tiles containing <1% should be tested with SEM or TEM. This certificate of analysis relates only to the samples tested and to insure the integrity of the results, may only be reproduced in full. This certificate may not be used by the customer to claim product endorsement by NVLAP or any agency of the US Government. APEX Research Inc. is not responsible for the accuracy of the results for layered samples or samples comprising multiple materials. Liability limited to cost of analysis.



NVLAP Lab Code 102118-0



# Certificate of Laboratory Analysis

## Test Method, Polarized Light Microscopy (PLM)

Project: City Hall South Bldg  
Project #: EE16059

**Report To:**

Mr. Julie Robbins  
Global Environmental Engineering Inc  
10312 N. Holly Rd  
Holly, MI 48442

ARI Report # 17-68481  
Date Collected: 12/21/16  
Date Received: 01/13/17  
Date Analyzed: 01/19/17  
Date Reported: 01/19/17

Sample Information	Asbestos Type/Percent	Non-Asbestos
Lab ID #: 68481 - 101a Cust. #: CHS SM1-2 Material: Plaster Base Coat Location: FS 2 Appearance: grey, fibrous, homogenous Layer: 2 of 2	Asbestos Present: <b>NO</b> No Asbestos Observed	Cellulose - 2% Other - 98%
Lab ID #: 68481 - 102 Cust. #: CHS SM1-3 Material: Plaster Finish Coat Location: FS 20 Appearance: white, nonfibrous, homogenous Layer: 1 of 2	Asbestos Present: <b>NO</b> No Asbestos Observed	Other - 100%
Lab ID #: 68481 - 102a Cust. #: CHS SM1-3 Material: Plaster Base Coat Location: FS 20 Appearance: grey, fibrous, homogenous Layer: 2 of 2	Asbestos Present: <b>NO</b> No Asbestos Observed	Cellulose - 2% Other - 98%

For Layered Samples, each component will be analyzed and reported separately.

Robert T. Letarte Jr., Laboratory Director

Test Method EPA 600/R-93/116 was used to analyze the above samples. Matrix interference and/or resolution limits may yield false/negative results in certain circumstances. Suspect floor tiles containing <1% should be tested with SEM or TEM. This certificate of analysis relates only to the samples tested and to insure the integrity of the results, may only be reproduced in full. This certificate may not be used by the customer to claim product endorsement by NVLAP or any agency of the US Government. APEX Research Inc. is not responsible for the accuracy of the results for layered samples or samples comprising multiple materials. Liability limited to cost of analysis.



NVLAP Lab Code 102118-0



# Certificate of Laboratory Analysis

## Test Method, Polarized Light Microscopy (PLM)

Project: City Hall South Bldg  
Project #: EE16059

**Report To:**

Mr. Julie Robbins  
Global Environmental Engineering Inc  
10312 N. Holly Rd  
Holly, MI 48442

ARI Report # 17-68481

Date Collected: 12/21/16

Date Received: 01/13/17

Date Analyzed: 01/19/17

Date Reported: 01/19/17

Sample Information	Asbestos Type/Percent	Non-Asbestos
Lab ID #: 68481 - 103 Cust. #: CHS SM1-4 Material: Plaster Finish Coat Location: FS 40 Appearance: white,nonfibrous,homogenous Layer: 1 of 2	Asbestos Present: <b>NO</b> No Asbestos Observed	Other - 100%
Lab ID #: 68481 - 103a Cust. #: CHS SM1-4 Material: Plaster Base Coat Location: FS 40 Appearance: grey,nonfibrous,homogenous Layer: 2 of 2	Asbestos Present: <b>NO</b> No Asbestos Observed	Cellulose - 1% Other - 99%
Lab ID #: 68481 - 104 Cust. #: CHS SM1-5 Material: Plaster Finish Coat Location: FS 41 Appearance: white,nonfibrous,homogenous Layer: 1 of 2	Asbestos Present: <b>NO</b> No Asbestos Observed	Other - 100%

For Layered Samples, each component will be analyzed and reported separately.

Robert T. Letarte Jr., Laboratory Director

Test Method EPA 600/R-93/116 was used to analyze the above samples. Matrix interference and/or resolution limits may yield false/negative results in certain circumstances. Suspect floor tiles containing <1% should be tested with SEM or TEM. This certificate of analysis relates only to the samples tested and to insure the integrity of the results, may only be reproduced in full. This certificate may not be used by the customer to claim product endorsement by NVLAP or any agency of the US Government. APEX Research Inc. is not responsible for the accuracy of the results for layered samples or samples comprising multiple materials. Liability limited to cost of analysis.



NVLAP Lab Code 102118-0



# Certificate of Laboratory Analysis

## Test Method, Polarized Light Microscopy (PLM)

Project: City Hall South Bldg  
Project #: EE16059

**Report To:**

Mr. Julie Robbins  
Global Environmental Engineering Inc  
10312 N. Holly Rd  
Holly, MI 48442

ARI Report # 17-68481  
Date Collected: 12/21/16  
Date Received: 01/13/17  
Date Analyzed: 01/19/17  
Date Reported: 01/19/17

Sample Information	Asbestos Type/Percent	Non-Asbestos
Lab ID #: 68481 - 104a Cust. #: CHS SM1-5 Material: Plaster Base Coat Location: FS 41 Appearance: grey, fibrous, homogenous Layer: 2 of 2	Asbestos Present: <b>NO</b> No Asbestos Observed	Cellulose - 1% Other - 99%
Lab ID #: 68481 - 105 Cust. #: CHS SM1-6 Material: Plaster Finish Coat Location: FS 41 Appearance: white, nonfibrous, homogenous Layer: 1 of 2	Asbestos Present: <b>NO</b> No Asbestos Observed	Other - 100%
Lab ID #: 68481 - 105a Cust. #: CHS SM1-6 Material: Plaster Base Coat Location: FS 41 Appearance: grey, nonfibrous, homogenous Layer: 2 of 2	Asbestos Present: <b>NO</b> No Asbestos Observed	Cellulose - 1% Other - 99%

For Layered Samples, each component will be analyzed and reported separately.

Robert T. Letarte Jr., Laboratory Director

Test Method EPA 600/R-93/116 was used to analyze the above samples. Matrix interference and/or resolution limits may yield false/negative results in certain circumstances. Suspect floor tiles containing <1% should be tested with SEM or TEM. This certificate of analysis relates only to the samples tested and to insure the integrity of the results, may only be reproduced in full. This certificate may not be used by the customer to claim product endorsement by NVLAP or any agency of the US Government. APEX Research Inc. is not responsible for the accuracy of the results for layered samples or samples comprising multiple materials. Liability limited to cost of analysis.



NVLAP Lab Code 102118-0



# Certificate of Laboratory Analysis

## Test Method, Polarized Light Microscopy (PLM)

Project: City Hall South Bldg  
Project #: EE16059

**Report To:**

Mr. Julie Robbins  
Global Environmental Engineering Inc  
10312 N. Holly Rd  
Holly, MI 48442

ARI Report # 17-68481  
Date Collected: 12/21/16  
Date Received: 01/13/17  
Date Analyzed: 01/19/17  
Date Reported: 01/19/17

Sample Information	Asbestos Type/Percent	Non-Asbestos
Lab ID #: 68481 - 106 Cust. #: CHS SM1-7 Material: Plaster Finish Coat Location: FS 48 Appearance: white, nonfibrous, homogenous Layer: 1 of 2	Asbestos Present: <b>NO</b> No Asbestos Observed	Other - 100%
Lab ID #: 68481 - 106a Cust. #: CHS SM1-7 Material: Plaster Base Coat Location: FS 48 Appearance: grey, nonfibrous, homogenous Layer: 2 of 2	Asbestos Present: <b>NO</b> No Asbestos Observed	Cellulose - 1% Other - 99%
Lab ID #: 68481 - 107 Cust. #: CHS SM2-1 Material: Pink Caulk Location: FS 22 Appearance: pink, nonfibrous, homogenous Layer: 1 of 1	Asbestos Present: <b>NO</b> No Asbestos Observed	Other - 100%

For Layered Samples, each component will be analyzed and reported separately.

Robert T. Letarte Jr., Laboratory Director

Test Method EPA 600/R-93/116 was used to analyze the above samples. Matrix interference and/or resolution limits may yield false/negative results in certain circumstances. Suspect floor tiles containing <1% should be tested with SEM or TEM. This certificate of analysis relates only to the samples tested and to insure the integrity of the results, may only be reproduced in full. This certificate may not be used by the customer to claim product endorsement by NVLAP or any agency of the US Government. APEX Research Inc. is not responsible for the accuracy of the results for layered samples or samples comprising multiple materials. Liability limited to cost of analysis.



NVLAP Lab Code 102118-0





# Certificate of Laboratory Analysis

## Test Method, Polarized Light Microscopy (PLM)

Project: City Hall South Bldg  
Project #: EE16059

**Report To:**

Mr. Julie Robbins  
Global Environmental Engineering Inc  
10312 N. Holly Rd  
Holly, MI 48442

ARI Report # 17-68481  
Date Collected: 12/21/16  
Date Received: 01/13/17  
Date Analyzed: 01/19/17  
Date Reported: 01/19/17

Sample Information	Asbestos Type/Percent	Non-Asbestos
Lab ID #: 68481 - 108 Cust. #: CHS SM2-2 Material: Pink Caulk Location: FS 22 Appearance: pink,nonfibrous,homogenous Layer: 1 of 1	Asbestos Present: <b>NO</b> No Asbestos Observed	Other - 100%
Lab ID #: 68481 - 109 Cust. #: CHS SM2-3 Material: Pink Caulk Location: FS 22 Appearance: pink,nonfibrous,homogenous Layer: 1 of 1	Asbestos Present: <b>NO</b> No Asbestos Observed	Other - 100%
Lab ID #: 68481 - 110 Cust. #: CHS SM3-1 Material: Brick Mortar Location: FS 23 Appearance: grey,nonfibrous,homogenous Layer: 1 of 1	Asbestos Present: <b>NO</b> No Asbestos Observed	Other - 100%

For Layered Samples, each component will be analyzed and reported separately.

Robert T. Letarte Jr., Laboratory Director

Test Method EPA 600/R-93/116 was used to analyze the above samples. Matrix interference and/or resolution limits may yield false/negative results in certain circumstances. Suspect floor tiles containing <1% should be tested with SEM or TEM. This certificate of analysis relates only to the samples tested and to insure the integrity of the results, may only be reproduced in full. This certificate may not be used by the customer to claim product endorsement by NVLAP or any agency of the US Government. APEX Research Inc. is not responsible for the accuracy of the results for layered samples or samples comprising multiple materials. Liability limited to cost of analysis.



NVLAP Lab Code 102118-0



# Certificate of Laboratory Analysis

## Test Method, Polarized Light Microscopy (PLM)

Project: City Hall South Bldg  
Project #: EE16059

**Report To:**

Mr. Julie Robbins  
Global Environmental Engineering Inc  
10312 N. Holly Rd  
Holly, MI 48442

ARI Report # 17-68481  
Date Collected: 12/21/16  
Date Received: 01/13/17  
Date Analyzed: 01/19/17  
Date Reported: 01/19/17

Sample Information	Asbestos Type/Percent	Non-Asbestos
Lab ID #: 68481 - 111 Cust. #: CHS SM3-2 Material: Brick Mortar Location: FS 23 Appearance: grey, nonfibrous, homogenous Layer: 1 of 1	Asbestos Present: <b>NO</b> No Asbestos Observed	Other - 100%
Lab ID #: 68481 - 112 Cust. #: CHS SM3-3 Material: Brick Mortar Location: FS 23 Appearance: grey, nonfibrous, homogenous Layer: 1 of 1	Asbestos Present: <b>NO</b> No Asbestos Observed	Other - 100%
Lab ID #: 68481 - 113 Cust. #: CHS SM3-4 Material: Brick Mortar Location: FS 3 Appearance: grey, nonfibrous, homogenous Layer: 1 of 1	Asbestos Present: <b>NO</b> No Asbestos Observed	Other - 100%

For Layered Samples, each component will be analyzed and reported separately.

Robert T. Letarte Jr., Laboratory Director

Test Method EPA 600/R-93/116 was used to analyze the above samples. Matrix interference and/or resolution limits may yield false/negative results in certain circumstances. Suspect floor tiles containing <1% should be tested with SEM or TEM. This certificate of analysis relates only to the samples tested and to insure the integrity of the results, may only be reproduced in full. This certificate may not be used by the customer to claim product endorsement by NVLAP or any agency of the US Government. APEX Research Inc. is not responsible for the accuracy of the results for layered samples or samples comprising multiple materials. Liability limited to cost of analysis.



NVLAP Lab Code 102118-0

# Certificate of Laboratory Analysis

## Test Method, Polarized Light Microscopy (PLM)



Project: City Hall South Bldg  
Project #: EE16059

**Report To:**

Mr. Julie Robbins  
Global Environmental Engineering Inc  
10312 N. Holly Rd  
Holly, MI 48442

ARI Report # 17-68481  
Date Collected: 12/21/16  
Date Received: 01/13/17  
Date Analyzed: 01/19/17  
Date Reported: 01/19/17

Sample Information	Asbestos Type/Percent	Non-Asbestos
Lab ID #: 68481 - 114 Cust. #: CHS SM3-5 Material: Brick Mortar Location: FS 3 Appearance: grey,nonfibrous,homogenous Layer: 1 of 1	Asbestos Present: <b>NO</b> No Asbestos Observed	Other - 100%
Lab ID #: 68481 - 115 Cust. #: CHS SM3-6 Material: Brick Mortar Location: FS 39 Appearance: grey,nonfibrous,homogenous Layer: 1 of 1	Asbestos Present: <b>NO</b> No Asbestos Observed	Other - 100%
Lab ID #: 68481 - 116 Cust. #: CHS SM3-7 Material: Brick Mortar Location: FS 39 Appearance: grey,nonfibrous,homogenous Layer: 1 of 1	Asbestos Present: <b>NO</b> No Asbestos Observed	Other - 100%

For Layered Samples, each component will be analyzed and reported separately.

Robert T. Letarte Jr., Laboratory Director

Test Method EPA 600/R-93/116 was used to analyze the above samples. Matrix interference and/or resolution limits may yield false/negative results in certain circumstances. Suspect floor tiles containing <1% should be tested with SEM or TEM. This certificate of analysis relates only to the samples tested and to insure the integrity of the results, may only be reproduced in full. This certificate may not be used by the customer to claim product endorsement by NVLAP or any agency of the US Government. APEX Research Inc. is not responsible for the accuracy of the results for layered samples or samples comprising multiple materials. Liability limited to cost of analysis.



NVLAP Lab Code 102118-0



# Certificate of Laboratory Analysis

## Test Method, Polarized Light Microscopy (PLM)

Project: City Hall South Bldg  
Project #: EE16059

**Report To:**

Mr. Julie Robbins  
Global Environmental Engineering Inc  
10312 N. Holly Rd  
Holly, MI 48442

ARI Report # 17-68481  
Date Collected: 12/21/16  
Date Received: 01/13/17  
Date Analyzed: 01/19/17  
Date Reported: 01/19/17

Sample Information	Asbestos Type/Percent	Non-Asbestos
Lab ID #: 68481 - 117 Cust. #: CHS SM4-1 Material: Spray On Ceiling Insulation Location: FS 51 Appearance: white, fibrous, homogenous Layer: 1 of 1	Asbestos Present: <b>NO</b> No Asbestos Observed	Cellulose - 5% Mineral Wool - 60% Other - 35%
Lab ID #: 68481 - 118 Cust. #: CHS SM4-2 Material: Spray On Ceiling Insulation Location: FS 51 Appearance: white, fibrous, homogenous Layer: 1 of 1	Asbestos Present: <b>NO</b> No Asbestos Observed	Cellulose - 5% Mineral Wool - 60% Other - 35%
Lab ID #: 68481 - 119 Cust. #: CHS SM4-3 Material: Spray On Ceiling Insulation Location: FS 51 Appearance: white, fibrous, homogenous Layer: 1 of 1	Asbestos Present: <b>NO</b> No Asbestos Observed	Cellulose - 5% Mineral Wool - 50% Other - 45%

For Layered Samples, each component will be analyzed and reported separately.

Robert T. Lefarte Jr., Laboratory Director

Test Method EPA 600/R-93/116 was used to analyze the above samples. Matrix interference and/or resolution limits may yield false negative results in certain circumstances. Suspect floor tiles containing <1% should be tested with SEM or TEM. This certificate of analysis relates only to the samples tested and to insure the integrity of the results, may only be reproduced in full. This certificate may not be used by the customer to claim product endorsement by NVLAP or any agency of the US Government. APEX Research Inc. is not responsible for the accuracy of the results for layered samples or samples comprising multiple materials. Liability limited to cost of analysis.



NVLAP Lab Code 102118-0



# Certificate of Laboratory Analysis

## Test Method, Polarized Light Microscopy (PLM)

Project: City Hall South Bldg  
Project #: EE16059

**Report To:**

Mr. Julie Robbins  
Global Environmental Engineering Inc  
10312 N. Holly Rd  
Holly, MI 48442

ARI Report # 17-68481  
Date Collected: 12/21/16  
Date Received: 01/13/17  
Date Analyzed: 01/19/17  
Date Reported: 01/19/17

Sample Information	Asbestos Type/Percent	Non-Asbestos
Lab ID #: 68481 - 120 Cust. #: CHS SM4-4 Material: Spray On Ceiling Insulation Location: FS 51 Appearance: white, fibrous, homogenous Layer: 1 of 1	Asbestos Present: <b>NO</b> No Asbestos Observed	Cellulose - 5% Mineral Wool - 55% Other - 40%
Lab ID #: 68481 - 121 Cust. #: CHS SM4-5 Material: Spray On Ceiling Insulation Location: FS 51 Appearance: white, fibrous, homogenous Layer: 1 of 1	Asbestos Present: <b>NO</b> No Asbestos Observed	Cellulose - 5% Mineral Wool - 60% Other - 35%
Lab ID #: 68481 - 122 Cust. #: CHS SM4-6 Material: Spray On Ceiling Insulation Location: FS 51 Appearance: white, fibrous, homogenous Layer: 1 of 1	Asbestos Present: <b>NO</b> No Asbestos Observed	Cellulose - 5% Mineral Wool - 60% Other - 35%

For Layered Samples, each component will be analyzed and reported separately.

Robert T. Letarte Jr., Laboratory Director

Test Method EPA 600/R-93/116 was used to analyze the above samples. Matrix interference and/or resolution limits may yield false/negative results in certain circumstances. Suspect floor tiles containing <1% should be tested with SEM or TEM. This certificate of analysis relates only to the samples tested and to insure the integrity of the results, may only be reproduced in full. This certificate may not be used by the customer to claim product endorsement by NVLAP or any agency of the US Government. APEX Research Inc. is not responsible for the accuracy of the results for layered samples or samples comprising multiple materials. Liability limited to cost of analysis.



NVLAP Lab Code 102118-0



# Certificate of Laboratory Analysis

## Test Method, Polarized Light Microscopy (PLM)

Project: City Hall South Bldg  
Project #: EE16059

**Report To:**

Mr. Julie Robbins  
Global Environmental Engineering Inc  
10312 N. Holly Rd  
Holly, MI 48442

ARI Report # 17-68481

Date Collected: 12/21/16

Date Received: 01/13/17

Date Analyzed: 01/19/17

Date Reported: 01/19/17

Sample Information	Asbestos Type/Percent	Non-Asbestos
Lab ID #: 68481 - 123 Cust. #: CHS SM4-7 Material: Spray On Ceiling Insulation Location: FS 51 Appearance: white, fibrous, homogenous Layer: 1 of 1	Asbestos Present: <b>NO</b> No Asbestos Observed	Cellulose - 10% Mineral Wool - 60% Other - 30%
Lab ID #: 68481 - 124 Cust. #: CHS TSI1-1 Material: Millboard Runs Location: FS 3 Appearance: brown, fibrous, nonhomogenous Layer: 1 of 1	Asbestos Present: <b>YES</b> Chrysotile - 15%	Cellulose - 70% Other - 15%
Lab ID #: 68481 - 125 Cust. #: CHS TSI1-2 Material: Millboard Runs Location: FS 3 Appearance: Layer: of	Asbestos Present:  NOT ANALYZED	

For Layered Samples, each component will be analyzed and reported separately.

Robert T. Letarte Jr., Laboratory Director

Test Method EPA 600/R-93/116 was used to analyze the above samples. Matrix interference and/or resolution limits may yield false/negative results in certain circumstances. Suspect floor tiles containing <1% should be tested with SEM or TEM. This certificate of analysis relates only to the samples tested and to insure the integrity of the results, may only be reproduced in full. This certificate may not be used by the customer to claim product endorsement by NVLAP or any agency of the US Government. APEX Research Inc. is not responsible for the accuracy of the results for layered samples or samples comprising multiple materials. Liability limited to cost of analysis.



NVLAP Lab Code 102118-0



# Certificate of Laboratory Analysis

## Test Method, Polarized Light Microscopy (PLM)

Project: City Hall South Bldg  
Project #: EE16059

**Report To:**

Mr. Julie Robbins  
Global Environmental Engineering Inc  
10312 N. Holly Rd  
Holly, MI 48442

ARI Report # 17-68481  
Date Collected: 12/21/16  
Date Received: 01/13/17  
Date Analyzed: 01/19/17  
Date Reported: 01/19/17

**Sample Information****Asbestos Type/Percent****Non-Asbestos**

Lab ID #: 68481 - 126  
Cust. #: CHS TSI1-3  
Material: Millboard Runs  
Location: FS 3  
Appearance:  
Layer: of

Asbestos Present:

NOT ANALYZED

Lab ID #: 68481 - 127  
Cust. #: CHS TSI2-1  
Material: Mudded Fittings on Fiberglass Run  
Location: FS 1  
Appearance: grey, fibrous, homogenous  
Layer: 1 of 1

Asbestos Present: **YES**  
Chrysotile - 50%

Cellulose - 10%  
Other - 40%

Lab ID #: 68481 - 128  
Cust. #: CHS TSI2-2  
Material: Mudded Fittings on Fiberglass Run  
Location: FS 1  
Appearance:  
Layer: of

Asbestos Present:

NOT ANALYZED

For Layered Samples, each component will be analyzed and reported separately.

Robert T. Letarte Jr., Laboratory Director

Test Method EPA 600/R-93/116 was used to analyze the above samples. Matrix interference and/or resolution limits may yield false/negative results in certain circumstances. Suspect floor tiles containing <1% should be tested with SEM or TEM. This certificate of analysis relates only to the samples tested and to insure the integrity of the results, may only be reproduced in full. This certificate may not be used by the customer to claim product endorsement by NVLAP or any agency of the US Government. APEX Research Inc. is not responsible for the accuracy of the results for layered samples or samples comprising multiple materials. Liability limited to cost of analysis.



NVLAP Lab Code 102118-0



# Certificate of Laboratory Analysis

## Test Method, Polarized Light Microscopy (PLM)

Project: City Hall South Bldg  
Project #: EE16059

**Report To:**

Mr. Julie Robbins  
Global Environmental Engineering Inc  
10312 N. Holly Rd  
Holly, MI 48442

ARI Report # 17-68481  
Date Collected: 12/21/16  
Date Received: 01/13/17  
Date Analyzed: 01/19/17  
Date Reported: 01/19/17

**Sample Information****Asbestos Type/Percent****Non-Asbestos**

Lab ID #: 68481 - 129  
Cust. #: CHS TSI2-3  
Material: Mudded Fittings on Fiberglass Run  
Location: FS 2  
Appearance:  
Layer: of

Asbestos Present:  
  
NOT ANALYZED

Lab ID #: 68481 - 130  
Cust. #: CHS TSI3-1  
Material: Fittings on Millboard Runs  
Location: FS 3  
Appearance: grey, fibrous, homogenous  
Layer: 1 of 1

Asbestos Present: **YES**  
Chrysotile - 35%

Mineral Wool - 20%  
Other - 45%

Lab ID #: 68481 - 131  
Cust. #: CHS TSI3-2  
Material: Fittings on Millboard Runs  
Location: FS 3  
Appearance:  
Layer: of

Asbestos Present:  
  
NOT ANALYZED

For Layered Samples, each component will be analyzed and reported separately.

Robert T. Letarte Jr., Laboratory Director

Test Method EPA 600/R-93/116 was used to analyze the above samples. Matrix interference and/or resolution limits may yield false/negative results in certain circumstances. Suspect floor tiles containing <1% should be tested with SEM or TEM. This certificate of analysis relates only to the samples tested and to insure the integrity of the results, may only be reproduced in full. This certificate may not be used by the customer to claim product endorsement by NVLAP or any agency of the US Government. APEX Research Inc. is not responsible for the accuracy of the results for layered samples or samples comprising multiple materials. Liability limited to cost of analysis.



NVLAP Lab Code 102118-0





# Certificate of Laboratory Analysis

## Test Method, Polarized Light Microscopy (PLM)

Project: City Hall South Bldg  
Project #: EE16059

**Report To:**

Mr. Julie Robbins  
Global Environmental Engineering Inc  
10312 N. Holly Rd  
Holly, MI 48442

ARI Report # 17-68481  
Date Collected: 12/21/16  
Date Received: 01/13/17  
Date Analyzed: 01/19/17  
Date Reported: 01/19/17

Sample Information	Asbestos Type/Percent	Non-Asbestos
Lab ID #: 68481 - 132 Cust. #: CHS TSI3-3 Material: Fittings on Millboard Runs Location: FS 3 Appearance: Layer: of	Asbestos Present:  NOT ANALYZED	
Lab ID #: 68481 - 133 Cust. #: CHS TSI4-1 Material: Canvas Wrap over Fiberglass Duct Work Location: FS 6 Appearance: brown, fibrous, nonhomogenous Layer: 1 of 1	Asbestos Present: <b>NO</b> No Asbestos Observed	Cellulose - 60% Other - 40%
Lab ID #: 68481 - 134 Cust. #: CHS TSI4-2 Material: Canvas Wrap over Fiberglass Duct Work Location: FS 6 Appearance: brown, fibrous, nonhomogenous Layer: 1 of 1	Asbestos Present: <b>NO</b> No Asbestos Observed	Cellulose - 60% Other - 40%

For Layered Samples, each component will be analyzed and reported separately.

Robert T. Lefarte Jr., Laboratory Director

Test Method EPA 600/R-93/116 was used to analyze the above samples. Matrix interference and/or resolution limits may yield false/negative results in certain circumstances. Suspect floor tiles containing <1% should be tested with SEM or TEM. This certificate of analysis relates only to the samples tested and to insure the integrity of the results, may only be reproduced in full. This certificate may not be used by the customer to claim product endorsement by NVLAP or any agency of the US Government. APEX Research Inc. is not responsible for the accuracy of the results for layered samples or samples comprising multiple materials. Liability limited to cost of analysis.



NVLAP Lab Code 102118-0



# Certificate of Laboratory Analysis

## Test Method, Polarized Light Microscopy (PLM)

Project: City Hall South Bldg  
Project #: EE16059

**Report To:**

Mr. Julie Robbins  
Global Environmental Engineering Inc  
10312 N. Holly Rd  
Holly, MI 48442

ARI Report # 17-68481  
Date Collected: 12/21/16  
Date Received: 01/13/17  
Date Analyzed: 01/19/17  
Date Reported: 01/19/17

**Sample Information****Asbestos Type/Percent****Non-Asbestos**

Lab ID #: 68481 - 135  
Cust. #: CHS TSI4-3  
Material: Canvas Wrap over Fiberglass Duct Work  
Location: FS 7  
Appearance: brown, fibrous, nonhomogenous  
Layer: 1 of 1

Asbestos Present: **NO**  
No Asbestos Observed

Cellulose - 50%  
Other - 50%

Lab ID #: 68481 - 136  
Cust. #: CHS TSI4-4  
Material: Canvas Wrap over Fiberglass Duct Work  
Location: FS 7  
Appearance:  
Layer: of

Asbestos Present:  
  
NO SAMPLE RECEIVED

Lab ID #: 68481 - 137  
Cust. #: CHS TSI4-5  
Material: Canvas Wrap over Fiberglass Duct Work  
Location: FS 7  
Appearance:  
Layer: of

Asbestos Present:  
  
NO SAMPLE RECEIVED

For Layered Samples, each component will be analyzed and reported separately.

Robert T. Lefarte Jr., Laboratory Director

Test Method EPA 600/R-93/116 was used to analyze the above samples. Matrix interference and/or resolution limits may yield false/negative results in certain circumstances. Suspect floor tiles containing <1% should be tested with SEM or TEM. This certificate of analysis relates only to the samples tested and to insure the integrity of the results, may only be reproduced in full. This certificate may not be used by the customer to claim product endorsement by NVLAP or any agency of the US Government. APEX Research Inc. is not responsible for the accuracy of the results for layered samples or samples comprising multiple materials. Liability limited to cost of analysis.



NVLAP Lab Code 102118-0



# Certificate of Laboratory Analysis

## Test Method, Polarized Light Microscopy (PLM)

Project: City Hall South Bldg  
Project #: EE16059

**Report To:**

Mr. Julie Robbins  
Global Environmental Engineering Inc  
10312 N. Holly Rd  
Holly, MI 48442

ARI Report # 17-68481  
Date Collected: 12/21/16  
Date Received: 01/13/17  
Date Analyzed: 01/19/17  
Date Reported: 01/19/17

**Sample Information****Asbestos Type/Percent****Non-Asbestos**

Lab ID #: 68481 - 138  
Cust. #: CHS TSI4-6  
Material: Canvas Wrap over Fiberglass Duct Work  
Location: FS 7  
Appearance:  
Layer: of

Asbestos Present:

NO SAMPLE RECEIVED

Lab ID #: 68481 - 139  
Cust. #: CHS TSI4-7  
Material: Canvas Wrap over Fiberglass Duct Work  
Location: FS 7  
Appearance:  
Layer: of

Asbestos Present:

NO SAMPLE RECEIVED

Lab ID #: 68481 - 140  
Cust. #: CHS TSI6-1  
Material: 6" Millboard Run  
Location: FS 35  
Appearance: brown, fibrous, nonhomogenous  
Layer: 1 of 1

Asbestos Present: **YES**  
Chrysotile - 20%

Cellulose - 60%  
Other - 20%

For Layered Samples, each component will be analyzed and reported separately.

Robert T. Letarte Jr., Laboratory Director

Test Method EPA 600/R-93/116 was used to analyze the above samples. Matrix interference and/or resolution limits may yield false/negative results in certain circumstances. Suspect floor tiles containing <1% should be tested with SEM or TEM. This certificate of analysis relates only to the samples tested and to insure the integrity of the results, may only be reproduced in full. This certificate may not be used by the customer to claim product endorsement by NVLAP or any agency of the US Government. APEX Research Inc. is not responsible for the accuracy of the results for layered samples or samples comprising multiple materials. Liability limited to cost of analysis.



NVLAP Lab Code 102118-0



# Certificate of Laboratory Analysis

## Test Method, Polarized Light Microscopy (PLM)

Project: City Hall South Bldg  
Project #: EE16059

**Report To:**

Mr. Julie Robbins  
Global Environmental Engineering Inc  
10312 N. Holly Rd  
Holly, MI 48442

ARI Report # 17-68481

Date Collected: 12/21/16

Date Received: 01/13/17

Date Analyzed: 01/19/17

Date Reported: 01/19/17

**Sample Information****Asbestos Type/Percent****Non-Asbestos**

Lab ID #: 68481 - 141  
Cust. #: CHS TSI6-2  
Material: 6" Millboard Run  
Location: FS 35  
Appearance:  
Layer: of

Asbestos Present:

NOT ANALYZED

Lab ID #: 68481 - 142  
Cust. #: CHS TSI6-3  
Material: 6" Millboard Run  
Location: FS 35  
Appearance:  
Layer: of

Asbestos Present:

NOT ANALYZED

Lab ID #:  
Cust. #:  
Material:  
Location:  
Appearance:  
Layer: of

Asbestos Present:

For Layered Samples, each component will be analyzed and reported separately.

Robert T. Letarte Jr., Laboratory Director

Test Method EPA 600/R-93/116 was used to analyze the above samples. Matrix interference and/or resolution limits may yield false/negative results in certain circumstances. Suspect floor tiles containing <1% should be tested with SEM or TEM. This certificate of analysis relates only to the samples tested and to insure the integrity of the results, may only be reproduced in full. This certificate may not be used by the customer to claim product endorsement by NVLAP or any agency of the US Government. APEX Research Inc. is not responsible for the accuracy of the results for layered samples or samples comprising multiple materials. Liability limited to cost of analysis.



NVLAP Lab Code 102118-0

# 66481

Apex #

## APEX Research, Inc.

11054 Hi Tech Drive, Whitmore Lake, MI 48189. Phone: (734) 449 - 9990, Fax (734) 449 - 9991 www.ApexMI.com



Customer Name: Global Env. Eng. Inc.		Date of Survey: 12-21-2016		Lab Use Only	
Address: 10312 N. Holly Rd		Project: City Hall South Bldg.		Log-In:	
City, St., Zip: Holly, MI 48442		Project # EE16059		Report:	
Phone: (810) 238-9190 Fax: (810) 238-9195		Contact Person: Julie Robbins		Fax:	
Turn Around Times: (Circle One and indicate type/qty)		Email: jrobbins@globaleer.com		Verbal:	
Rush: 24 hour 72 hour		***Terms and conditions on the other side.		Email:	
Other: 5 DAY (TTP yes no)		Bulk X Wipe		PCM	
Samples received after 3pm logged in next morning		Lead / Cad / Chrome Bulk Wipe		Paint	
		Mold: Bulk Air/Zefon/AlergencoD		BioSIS	
		TEM: Bulk/NOB		EPA Level II	
Lab ID	Customer ID #	Material/Location	Volume	Area	Results
1	CHSMM1-1	9" Gray Floor Tile / Mastic FS1			
2	CHSMM1-2	↓			
3	CHSMM1-3	↓			
4	CHSMM2-1	4" Black Molding / Glue FS1			
5	CHSMM2-2	↓			
6	CHSMM2-3	↓			
7	CHSMM3-1	2x4 Wht Ceiling Tile w perforations FS16			
8	CHSMM3-2	↓			
9	CHSMM3-3	↓			
10	CHSMM4-1	Black Mastic FS4			
11	CHSMM4-2	↓			
12	CHSMM4-3	↓			
<b>RECEIVED</b>					
Relinquished By: Julie Robbins		Received By: Julie		Received By:	
Date: 12-21-2016		Time/Date: JAN 13 2017 11:50		Time/Date:	
Revision R3 Date: October 2015					

APEX RESEARCH

8481

# APEX Research, Inc.

11054 Hi Tech Drive, Whitmore Lake, MI 48189. Phone: (734) 449 - 9950, Fax (734) 449 - 9991 www.ApexML.com



Customer Name: Global Env. Eng. Inc.		Date of Survey: 12-21-2016		Lab Use Only	
Address: 10312 N. Holly Rd		Project: City Hall South Bldg.		Log-In:	
City, St., Zip: Holly, MI 48442		Project # EE16059		Report:	
Phone: (810) 238-9190 Fax: (810) 238-9195		Contact Person: Julie Robbins		Fax:	
Turn Around Times: (Circle One and indicate type/qty)		Email: jrobbins@globalenv.com		Verbal:	
Rush		***Terms and conditions on the other side.		Email:	

48 hour	24 hour	Asbestos:	Bulk	Wipe	Point Count	PCM
Other:	72 hour	Lead / Cad / Chrome	Bulk	Wipe	Air	Paint
TTP: yes <input checked="" type="checkbox"/> no <input type="checkbox"/>		Mold:	Bulk	Air/Zefon/AlergencoD	BioSIS	Soil
Samples received after 3pm logged in next morning		TEM:	Bulk/NOB	NIOSH 7402	EPA Level II	Tape

Lab ID	Customer ID #	Material/Location	Volume	Area	Results
13	CHSMM5-1	Brown Adhesive	FS4		
14	CHSMM5-2	↓	FS4		
15	CHSMM5-3	↓	FS21		
16	CHSMM6-1	Brown Fiberboard	FS7		
17	CHSMM6-2	↓	FS7		
18	CHSMM6-3	↓	FS7		
19	CHSMM7-1	9" Brown Floor Tile w/ Cream streaks/Mastic	FS17		
20	CHSMM7-2	↓	FS12		
21	CHSMM7-3	↓	FS12		
22	CHSMM8-1	Drywall Panels	FS17		
23	CHSMM8-2	↓	FS13		
24	CHSMM8-3	↓	FS35		

Relinquished By: Julie Robbins	Received By: [Signature]	Relinquished By:	Received By:
Date: 12-21-2016	Time/Date: 11:30	Date:	Time/Date:
Revision R3 Date: October 2015			

APEX RESEARCH

68481

# APEX Research, Inc.



11054 HI Tech Drive, Whitmore Lake, MI 48189. Phone: (734) 449 - 9990, Fax (734) 449 - 9991 www.ApexMI.com

Customer Name: Global Env. Eng. Inc.		Date of Survey: 12-21-2016		Lab Use Only	
Address: 10312 N. Holly Rd		Project: City Hall South Bldg.		Log-In:	
City, St., Zip: Holly, MI 48442		Project # EE160059		Report:	
Phone: (810) 238-9190 Fax: (810) 238-9195		Contact Person: Julie Robbins		Fax:	
Email: jrobbin@globalee.com		***Terms and conditions on the other side***		Verbal:	
Turn Around Times: (Circle One and indicate type/qty)				Email:	
Rush	24 hour	Asbestos:	Bulk	Wipe	Point Count
48 hour	72 hour	Lead / Cad / Chrome	Bulk	Wipe	Paint
Other:	TTP yes <input checked="" type="checkbox"/> no <input type="checkbox"/>	Mold:	Bulk	Air/Zefon/AlergencoD	BioSIS
Samples received after 3pm logged in next morning	(Test TSP Positive)	TEM:	Bulk/NOB	NIOSH 7402	EPA Level II
Lab ID	Customer ID #	Material/Location	Volume	Area	Results
25	CHSMM8-4	↓ FS35			
26	CHSMM8-5	↓ FS35			
27	CHSMM9-1	12" White Floor Tile w/ Gray Strakes/Mastic FS18			
28	CHSMM9-2	↓ FS24			
29	CHSMM9-3	↓ FS33			
30	CHSMM9-4	↓ FS21			
31	CHSMM9-5	↓ FS36			
32	CHSMM10-1	2x4 Whit Ceiling Tile w/ holes & perf. FS24			
33	CHSMM10-2	↓ FS37			
34	CHSMM10-3	↓ FS39			
35	CHSMM10-4	↓ FS48			
36	CHSMM10-5	↓ FS49			
Relinquished By: Julie Robbins		Received By: Julie Robbins		Received By:	
Date: 12-21-2016		Time/Date: JAN 13 2017		Time/Date:	
Revision R3 Date: October 2015					

APEX RESEARCH



68481

# APEX Research, Inc.



11054 HI Tech Drive, Whitmore Lake, MI 48189. Phone: (734) 449-9990, Fax (734) 449-9991 www.ApexMI.com

Customer Name: Global Env. Eng Inc Date of Survey: 12-21-2016 Lab Use Only  
 Address: 10312 N. Holly Rd Project: City Hall South Bldg. Log-In:  
 City, St., Zip: Holly, MI 48442 Project # EE160059 Report:  
 Phone: (810) 238-9190 Fax: (810) 238-9195 Contact Person: Julie Robbins Fax:  
 Email: jrobbins@globalecon.com Verbal:  
 Turn Around Times: (Circle One and indicate type/qty) \*\*\*Terms and conditions on the other side. Email:

Rush: ☐ 24 hour ☐ 72 hour ☒ Bulk ☒ Wipe ☐ Point Count ☐ PCM  
 48 hour ☐ Lead / Cad / Chrome ☐ Wipe ☐ Air ☐ Paint ☐ Soil  
 Other: ☒ TTP yes ☒ no ☐ Bulk ☐ Air/Zefon/AlergencoD ☐ BioSIS ☐ Tape  
 Samples received after 3pm ☐ Mold: ☐ Bulk/NOB ☐ NIOSH 7402 ☐ EPA Level II ☐ Other  
 logged in next morning ☐ TEM: ☐

Lab ID	Customer ID #	Material/Location	Volume	Area	Results
37	CHSMM11-1	18" Gray Floor Tile	FS25		
38	CHSMM11-2	↓			
39	CHSMM11-3	↓			
40	CHSMM12-1	6" Black Molding	FS27		
41	CHSMM12-2	↓	FS28		
42	CHSMM12-3	↓	FS43		
43	CHSMM13-1	Yellow Carpet Adhesive	FS12		
44	CHSMM13-2		FS16		
45	CHSMM13-3		FS12		
46	CHSMM13-4		FS42		
47	CHSMM13-5		FS43		
48	CHSMM13-6		FS46		

Relinquished By: Julie Robbins Received By: Julie  
 Date: 12-21-2016 Time/Date: JAN 13 2017  
 Revision R3 Date: October 2015  
 RECEIVED  
 APEX RESEARCH, INC.



08481

## APEX Research, Inc.

11054 HI Tech Drive, Whitmore Lake, MI 48189. Phone: (734) 449-9990, Fax (734) 449-9991 www.ApexMI.com



Customer Name: Global Env. Eng Inc  
 Address: 10312 N. Holly Rd  
 City, St, Zip: Holly, MI 48442  
 Phone: (810) 238-9190 Fax: (810) 238-9195  
 Turn Around Times: (Circle One and indicate type/qty)  
 Rush 24 hour 72 hour  
 Other: TTP yes ☒ no (Test Nil Positive)  
 Samples received after 3pm logged in next morning

Date of Survey: 12-21-2016  
 Project: City Hall South Bldg.  
 Project # EE10059  
 Contact Person: Julie Robbins  
 Email: jrobbins@globalecon.com  
 \*\*\*Terms and conditions on the other side\*\*\*

Asbestos: Bulk ☒ Wipe ☐ Point Count ☐ PCM  
 Lead / Cad / Chrome Bulk ☐ Wipe ☐ Air ☐ Paint ☐ Soil  
 Mold: Bulk ☐ Air/Zefon/AlergencoD ☐ BioSIS ☐ Tape  
 TEM: Bulk/NOB ☐ NIOSH 7402 ☐ EPA Level II ☐ Other ☐

Lab ID	Customer ID #	Material/Location	Volume	Area	Results
49	CHSMM13-7	↓	FS48		
50	CHSMM14-1	Drywall w/ joint compound	FS35		
51	CHSMM14-2	↓	FS37		
52	CHSMM14-3	↓	FS44		
53	CHSMM14-4	↓	FS46		
54	CHSMM14-5	↓	FS46		
55	CHSMM15-1	Pink Floor Tile / Mastic	FS35		
56	CHSMM15-2	↓			
57	CHSMM15-3	↓			
58	CHSMM15-4	↓			
59	CHSMM15-5	↓			
60	CHSMM16-1	Tan Textured Vinyl Drywall	FS36		

Relinquished By: Julie Robbins  
 Date: 12-21-2016  
 Revision R3 Date: October 2015

Received By: [Signature]  
 Relinquished By: [Signature]  
 Date: JAN 19 2017  
 Time/Date: [Signature]  
 Received By: [Signature]  
 Time/Date: [Signature]

APEX RESEARCH

11054 Hi Tech Drive, Whitmore Lake, MI 48189. Phone: (734) 449 - 9990, Fax (734) 449 - 9991 [www.ApexMI.com](http://www.ApexMI.com)



Customer Name: Global Env. Eng Inc		Date of Survey: 12-21-2016		Lab Use Only		
Address: 10312 N. Holly Rd		Project: City Hall South Bldg.		Log-In:		
City, St., Zip: Holly, MI 48442		Project # EE160059		Report:		
Phone: (810) 238-9190		Contact Person: Julie Robbins		Fax:		
Turn Around Times: (Circle One and indicate type/qty)		Email: jrobbins@globalee.com		Verbal:		
24 hour		Asbestos:		Email:		
48 hour		Lead / Cad / Chrome		PCM		
Other: TTP yes <input checked="" type="checkbox"/> no <input type="checkbox"/>		Bulk <input checked="" type="checkbox"/> Wipe <input type="checkbox"/>		Point Count		
Samples received after 3pm		Bulk <input type="checkbox"/> Wipe <input type="checkbox"/>		Paint		
logged in next morning		Bulk <input type="checkbox"/> Mold: <input type="checkbox"/>		BioSIS		
		Bulk/NOB		EPA Level II		
		TEM:		Other		
Lab ID	Customer ID #	Material/Location		Volume	Area	Results
61	CHSMM16-2	↓		FS36		
62	CHSMM16-3	↓				
63	CHSMM17-1	12" Blue Floor Tile / Mastic		FS37		
64	CHSMM17-2	↓				
65	CHSMM17-3	↓				
66	CHSMM18-1	4" Gray Molding		FS37		
67	CHSMM18-2	↓				
68	CHSMM18-3	↓				
69	CHSMM19-1	Pink Vinyl Driveway		FS43		
70	CHSMM19-2	↓				
71	CHSMM19-3	↓				
72	CHSMM19-4	↓				
Relinquished By: Julie Robbins		Received By: [Signature]		Relinquished By:		Received By:
Date: 12-21-2016		Time/Date: JAN 13 2017		Date:		Time/Date:
Revision R3 Date October 2015						

**APEX**

68481

# APEX Research, Inc.



11054 Hi Tech Drive, Whitmore Lake, MI 48189. Phone: (734) 449 - 9990, Fax (734) 449 - 9991 www.ApexMI.com

Customer Name: Global Env. Eng Inc  
 Address: 10312 N. Holly Rd  
 City, St., Zip: Holly, MI 48442  
 Phone: (810) 238-9190 Fax: (810) 238-9195  
 Date of Survey: 12-21-2016  
 Project: City Hall South Bldg.  
 Project # EE10059  
 Contact Person: Julie Robbins  
 Email: jrobbins@globalee.com  
 Turn Around Times: (Circle One and indicate type/qty)  
 Rush 24 hour 72 hour  
 Other: TTP yes ☒ no (Test TSP Positive)  
 Samples received after 3pm logged in next morning

Asbestos: Bulk ☒ Wipe ☐ Point Count ☐ PCM  
 Lead / Cad / Chrome Bulk ☐ Wipe ☐ Air ☐ Paint  
 Mold: Bulk ☐ Air/Zefon/AlergencoD ☐ BioSIS  
 TEM: Bulk/NOB ☐ NIOSH 7402 ☐ EPA Level II ☐ Other

Lab ID	Customer ID #	Material/Location	Volume	Area	Results
73	CHSMM19-5	↓	FS43		
74	CHSMM20-1	Wnt Vinyl Drywall	FS43		
75	CHSMM20-2	↓			
76	CHSMM20-3	↓			
77	CHSMM21-1	2'x2' Wnt Ceiling Tile w/ Perf. FS44			
78	CHSMM21-2	↓			
79	CHSMM21-3	↓			
80	CHSMM22-1	Pink Fuzzy Wall Cover	FS44		
81	CHSMM22-2	↓			
82	CHSMM22-3	↓			
83	CHSMM23-1	9" Tan Floor Tile / Mastic	FS46		
84	CHSMM23-2	↓			

Relinquished By: Julie Robbins  
 Date: 12-21-2016  
 Received By: [Signature]  
 Date: JAN 18 2017  
 Relinquished By: [Signature]  
 Date: [Blank]  
 Received By: [Blank]  
 Date: [Blank]

68481

# APEX Research, Inc.



11054 HI Tech Drive, Whitmore Lake, MI 48189, Phone: (734) 449 - 9990, Fax (734) 449 - 9991 www.ApexMI.com

Customer Name: Global Env. Eng. Inc.		Date of Survey: 12-21-2016		Lab Use Only	
Address: 10312 N. Holly Rd.		Project: City Hall South Bldg.		Log-In:	
City, St., Zip: Holly, MI 48442		Project # EE10059		Report:	
Phone: (810) 238-9190 Fax: (810) 238-9195		Contact Person: Julie Robbins		Fax:	
Email: jrobbin@globalee.com		***Terms and conditions on the other side.		Verbal:	
Turn Around Times: (Circle One and indicate type/qty)				Email:	
Rush	24 hour	Asbestos:	Bulk	Wipe	Point Count
48 hour	72 hour	Lead / Cad / Chrome	Bulk	Wipe	Paint
Other:	TTP yes <input checked="" type="checkbox"/> no <input type="checkbox"/>	Mold:	Bulk	Air/Zefon/AlergencooD	BioSIS
Samples received after 3pm	(Test TNP Positive)	TEM:	Bulk/NOB	NIOSH 7402	EPA Level II
logged in next morning					Other

Lab ID	Customer ID #	Material/Location	Volume	Area	Results
85	CHSMM23-3	↓			
86	CHSMM23-4	↓			
87	CHSMM23-5	↓			
88	CHSMM24-1	2'x4' Wht Ceiling Tile w/SM holes FS15			
89	CHSMM24-2	↓			
90	CHSMM24-3	↓			
91	CHSMM25-1	9" Gray Floor Tile w/ tan streaks/FS51			
92	CHSMM25-2	Mastic FS51			
93	CHSMM25-3	↓			
94	CHSMM26-1	1'x1' Wht Ceiling Tile w/holes FS51			
95	CHSMM26-2	↓			
96	CHSMM26-3	↓			

Relinquished By: Julie Robbins	Received By: [Signature]	Relinquished By:	Received By:
Date: 12-21-2016	Time/Date: JAN 13 2017	Date:	Time/Date:
Revision R3 Date: October 2015			

APEX RESEARCH



68481

# APEX Research, Inc.

11054 HI Tech Drive, Whitmore Lake, MI 48189. Phone: (734) 449 - 9990, Fax (734) 449 - 9991 www.ApexML.com



Customer Name: Global Env. Eng Inc  
 Address: 10312 N. Holly Rd  
 City, St., Zip: Holly, MI 48442  
 Phone: (810) 238-9190 Fax: (810) 238-9195  
 Turn Around Times: (Circle One and indicate type/qty)  
 Rush 24 hour 72 hour  
 Other: TTP/yes no (Test Full Positive)  
 Date of Survey: 12-21-2016  
 Project: City Hall South Bldg.  
 Project # EE160059  
 Contact Person: Julie Robbins  
 Email: jrobbins@globalee.com

Lab Use Only  
 Log-In:  
 Report:  
 Fax:  
 Verbal:  
 Email:  
 Bulk X Wipe Point Count PCM  
 Bulk Wipe Air Paint  
 Bulk Air/Zefon/AlergencoD BioSIS  
 Bulk/NOB NIOSH 7402 EPA Level II

Lab ID	Customer ID #	Material/Location	Volume	Area	Results
97	CHSMM27-1	9" Green Floor Tile / Mastic FS29			
98	CHSMM27-2	↓	FS30		
99	CHSMM27-3	↓	FS30		
100	CHSSM1-1	Plaster	FS1		
101	CHSSM1-2		FS2		
102	CHSSM1-3		FS20		
103	CHSSM1-4		FS40		
104	CHSSM1-5		FS41		
105	CHSSM1-6		FS41		
106	CHSSM1-7	↓	FS48		
107	CHSSM2-1	Pink Caulk	FS22		
108	CHSSM2-2	↓			

Relinquished By: [Signature] Received By: [Signature]  
 Date: 12-21-2016 Date: JAN 18 2017  
 Revision R3 Date: October 2015  
 Relinquished By: [Signature] Received By: [Signature]  
 Date: [ ] Date: [ ]  
 Time/Date: [ ] Time/Date: [ ]

APEX

68481

## APEX Research, Inc.

11054 HI Tech Drive, Whitmore Lake, MI 48189. Phone: (734) 449 - 9990, Fax (734) 449 - 9991 www.ApexMI.com



Customer Name: Global Env. Eng Inc		Date of Survey: 12-21-2016		Lab Use Only	
Address: 10312 N. Holly Rd		Project: City Hall South Bldg.		Log-In:	
City, St., Zip: Holly, MI 48442		Project # EE160059		Report:	
Phone: (810) 238-9190 Fax: (810) 238-9195		Contact Person: Julie Robbins		Fax:	
Turn Around Times: (Circle One and indicate type/qty)		Email: jrobbins@globalee.com		Verbal:	
Rush		***Terms and conditions on the other side		Email:	
48 hour	24 hour	Asbestos:	Bulk	Wipe	Point Count
	72 hour	Lead / Cad / Chrome	Bulk	Wipe	Paint
Other:	TTP yes <input checked="" type="checkbox"/> no	Mold:	Bulk	Air/Zefon/AlergencoD	BioSIS
Samples received after 3pm	(Test TSP Positive)	TEM:	Bulk/NOB	NIOSH 7402	EPA Level II
Logged in next morning					Other

Lab ID	Customer ID #	Material/Location	Volume	Area	Results
109	CHS SM2-3	↓			
110	CHS SM3-1	Brick Mortar	↓		
111	CHS SM3-2		FS23		
112	CHS SM3-3		FS23		
113	CHS SM3-4		FS23		
114	CHS SM3-5		FS3		
115	CHS SM3-6		FS3		
116	CHS SM3-7		FS39		
117	CHS SM4-1	↓	FS39		
118	CHS SM4-2	Spray on Ceiling Insulation FS51			
119	CHS SM4-3				
120	CHS SM4-4	↓			

Relinquished By: Julie Robbins	Received By: [Signature]	Relinquished By:	Received By:
Date: 12-21-2016	Date: JAN 13 2017	Date:	Date:
Revision R3 Date: October 2015		Time/Date:	Time/Date:

APEX RESEARCH

68481

## APEX Research, Inc.

11054 Hi Tech Drive, Whitmore Lake, MI 48189. Phone: (734) 449 - 9990, Fax (734) 449 - 9991 www.ApexMI.com



Customer Name: Global Env. Eng Inc  
 Address: 10312 N. Holly Rd  
 City, St, Zip: Holly, MI 48442  
 Phone: (810) 238-9190 Fax: (810) 238-9195  
 Turn Around Times: (Circle One and indicate type/qty)

Date of Survey: 12-21-2016  
 Project: City Hall South Bldg.  
 Project # EE16059  
 Contact Person: Julie Robbins  
 Email: jrobbins@globalee.com  
 \*\*\*Terms and conditions on the other side.

Lab Use Only  
 Log-In:  
 Report:  
 Fax:  
 Verbal:  
 Email:

Asbestos: Bulk ☒ Wipe ☐ Point Count ☐ PCM  
 Lead / Cad / Chrome Bulk ☐ Wipe ☐ Paint  
 Mold: Bulk ☐ Air/Zefon/AlergenCoD ☐ BioSIS  
 TEM: Bulk/NOB ☐ NIOSH 7402 ☐ EPA Level II ☐ Other

Lab ID	Customer ID #	Material/Location	Volume	Area	Results
121	CHSSM4-5	↓			
122	CHSSM4-6	↓			
123	CHSSM4-7	↓			
124	CHS TS11-1	Millboard Runs	FS3		
125	CHS TS11-2	↓			
126	CHS TS11-3	↓			
127	CHS TS12-1	Molded Fittings on fiberglass	FS1		
128	CHS TS12-2	Run	FS1		
129	CHS TS12-3	↓	FS2		
130	CHS TS13-1	Fittings on Millboard Runs	FS3		
131	CHS TS13-2	↓			
132	CHS TS13-3	↓			

Relinquished By: Julie Robbins  
 Date: 12-21-2016  
 Revision R3 Date: October 2015

Received By: *[Signature]*  
 Date: JAN 13 2017  
 Relinquished By: *[Signature]*  
 Date: *[Blank]*

Received By: *[Blank]*  
 Date: *[Blank]*

Time/Date: *[Blank]*

Time/Date: *[Blank]*

Time/Date: *[Blank]*

APEX RESEARCH

68481

## APEX Research, Inc.

11054 HI Tech Drive, Whitmore Lake, MI 48189. Phone: (734) 449 - 9990, Fax (734) 449 - 9991 www.ApexMI.com



Customer Name: Global Env. Eng Inc  
 Address: 10312 N. Holly Rd  
 City, St., Zip: Holly, MI 48442  
 Phone: (810) 238-9190 Fax: (810) 238-9195  
 Turn Around Times: (Circle One and indicate type/qty)  
 Rush: ☐ 24 hour ☐ 72 hour  
 Other: ☒ TTP yes ☐ no (Test TSP Positive)  
 Samples received after 3pm logged in next morning

Date of Survey: 12-21-2016  
 Project: City Hall South Bldg.  
 Project # 6610059  
 Contact Person: Julie Robbins  
 Email: jrobbins@globalecon.com  
 \*\*\*Terms and conditions on the other side\*\*\*

Asbestos: ☒ Bulk ☐ Wipe ☐ Point Count ☐ PCM  
 Lead / Cad / Chrome ☐ Bulk ☐ Wipe ☐ Air ☐ Paint  
 Mold: ☐ Bulk ☐ Air/Zefon/AlergencoD ☐ BioSIS  
 TEM: ☐ Bulk/NOB ☐ NIOSH 7402 ☐ EPA Level II

Lab ID	Customer ID #	Material/Location	Volume	Area	Results
133	CHS TS14-1	Canvas Wrap over Fiberglass Duct Work	FS6		
134	CHS TS14-2		FS6		
135	CHS TS14-3		FS7		
136	CHS TS14-4		FS7		
137	CHS TS14-5		FS7		
138	CHS TS14-6		FS7		
139	CHS TS14-7		FS7		
140	CHS TS16-1	6" Millboard Run	FS35		
141	CHS TS16-2				
142	CHS TS16-3				

Relinquished By: Julie Robbins  
 Date: 12-21-2016  
 Revision R3 Date: October 2015

RECEIVED

Received By:   
 Relinquished By:   
 Date:   
 Time/Date: JAN 13 2017

APEX RESEARCH