



City of Flint

Department of Purchases & Supplies

Sheldon A. Neeley

TO: All Proposers
FROM: Jarin McGee, Chief Buyer
DATE: **July 17, 2023**
SUBJECT: **Addendum #02** – P24-500 – Battery B Secondary Clarifier Flow Control

This addendum has been published to address the following.

The contract documents have been revised. Please see the attached document.

All other bidding terms, requirements, and conditions continue as indicated in the remaining original bid documents.

The Chief Buyer, Jarin McGee, is an officer for the City of Flint with respect to this RFP.

In the submission of their proposal, Proposer must acknowledge receipt of this addendum. Proposer shall acknowledge this addendum by signing and returning one copy of this notice with their submission.

Company Name: _____

Address: _____

City / State / Zip: _____

Telephone: _____ Fax: _____ Email: _____

Print Name: _____ Title: _____

Signature: _____ Date: _____

Thank you.

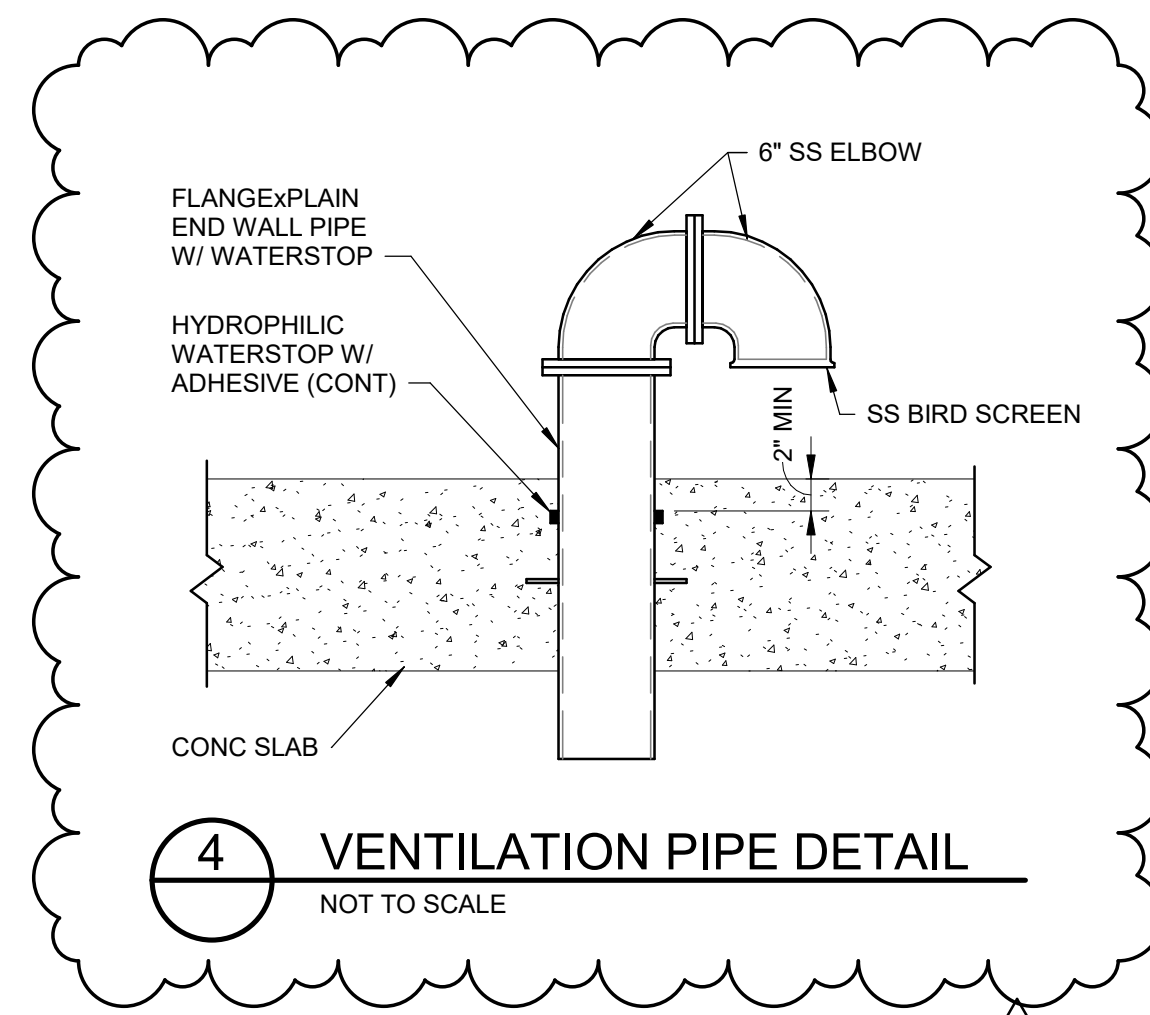
**SECTION 00 91 13
ADDENDUM NO. 02**

To all prospective bidders and others concerned, YOU ARE HEREBY ADVISED THAT the Contract Documents for the above referenced Project are revised in the following particulars:

Section	Description of Change
22 11 23	Revised paragraph 2.01.J.1 from 3 hp to 5 hp in Section 22 11 23 - Domestic Water Pumps.

Sheet	Description of Change
D-501	Sheet D-501 shall be replaced in its entirety with the revised Sheet D-501 accompanying this Addendum.
E-101	Sheet E-101 shall be replaced in its entirety with the revised Sheet E-101 accompanying this Addendum.
E104	Sheet E-104 shall be replaced in its entirety with the revised Sheet E-104 accompanying this Addendum.
E-105	Sheet E-105 shall be replaced in its entirety with the revised Sheet E-105 accompanying this Addendum.
E-601	Sheet E-601 shall be replaced in its entirety with the revised Sheet E-601 accompanying this Addendum.
M-601	<p>On Sheet M-601, the following shall be added to the Fan Schedule Remarks for SF-1: "PROVIDE 24"X24" DUCT FILTER BOX WITH REMOVABLE AND REPLACEABLE 1" FILTER. PROVIDE 1 SPARE FILTER. PROVIDE 15kW DUCT HEATER, INDEECO ULTRASAFE SERIES OR ENGINEERED APPROVED EQUAL."</p> <p>On Sheet M-601, the following shall be added to Heating and Ventilating Notes: "CONTRACTOR TO COORDINATE WITH ELECTRICAL DRAWINGS FOR POWER AND WIRING."</p>
P-101	<p>On Sheet P-101, the following shall be added to the Notes: "4" OUTLET WITH JOSAM SERIES 25010 OR ENGINEER APPROVED EQUAL DOWNSPOUT NOZZLE, COORDINATE WITH ARCHITECTURAL 24" X 18" X 18" CATCH BASIN WITH TRASH BASKET, ACCO SERIES 600 OR ENGINEER APPROVED EQUAL</p> <p>KLASSIK KS100 TRENCH DRAIN WITH STAINLESS STEEL GRATE OR ENGINEER APPROVED EQUAL"</p>

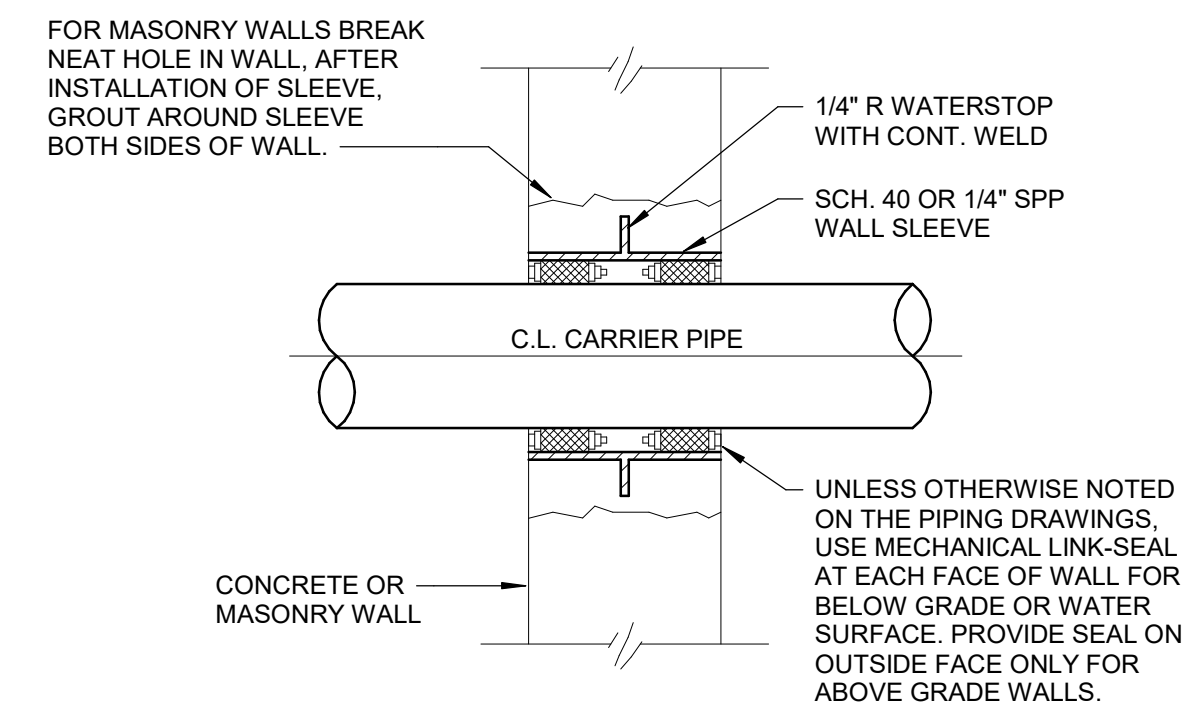
This Addendum is hereby incorporated into the original Contract Documents for the bidding referred to above and is considered as binding as though originally appearing therein. Receipt of this Addendum must be noted in the place provided in Section 00 42 43 - Proposal, dated July 14, 2023.



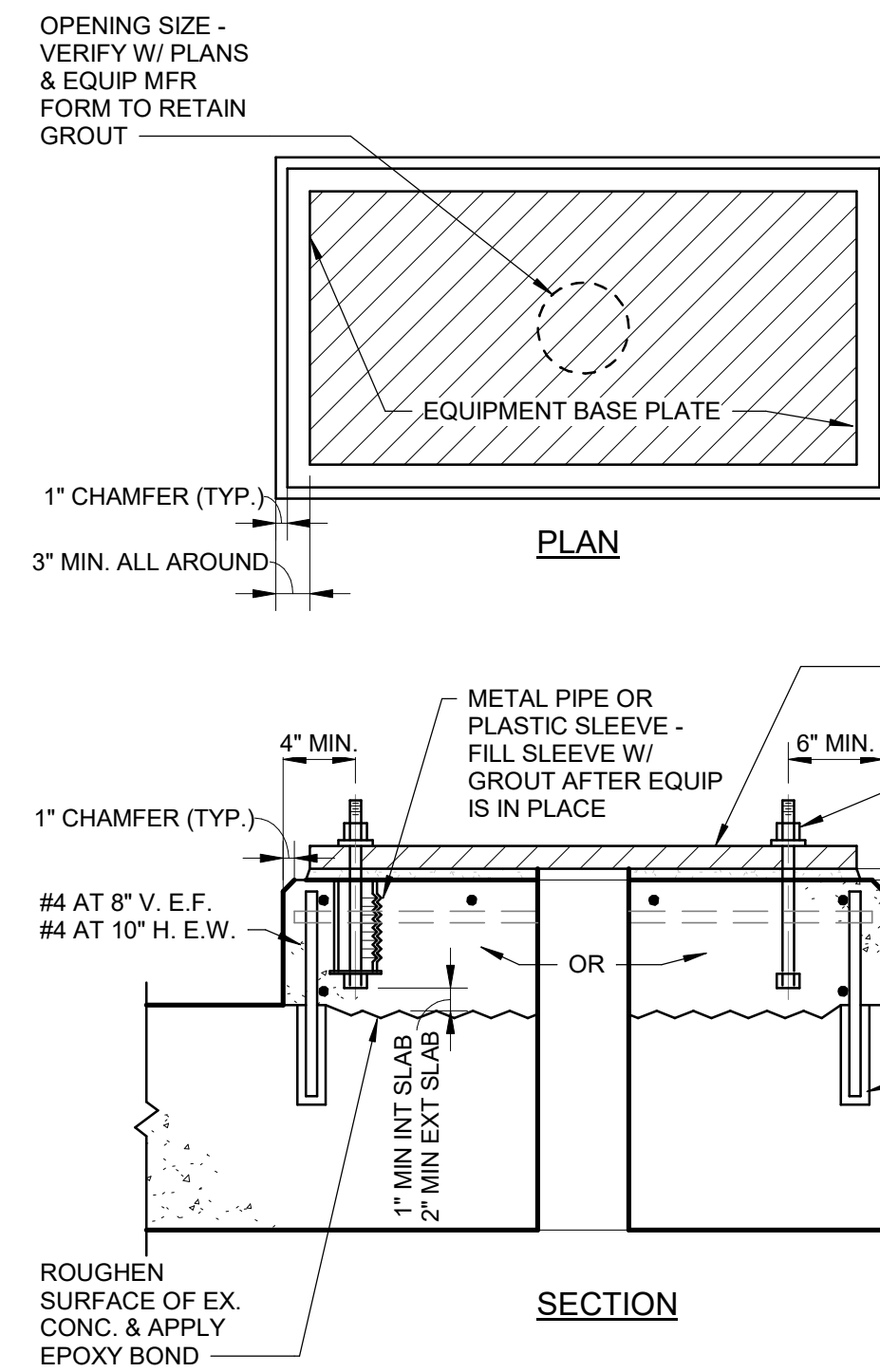
4 VENTILATION PIPE DETAIL
NOT TO SCALE

PIPE SCHEDULE				
SERVICE	SIZE	MATERIAL	JOINT	TEST PRESSURE
EXPOSED WASTE	4" - 10"	DIP	FL	50 PSI
BURIED WASTE	4" - 10"	DIP	MJ	50 PSI
BURIED WATER	4" - 6"	DIP	MJ	100 PSI

VALVE SCHEDULE					
TYPE	SIZE	QUANTITY	JOINT	OPERATOR	LOCATION
PLUG	6"	2	FL	HANDWHEEL / GEAR	SUBMERSIBLE PUMP STATION
PLUG	8"	1	FL	CHAINWHEEL / GEAR	DIGESTER BUILDING - LOWER LEVEL
SWING CHECK	6"	2	FL	OUTSIDE LEVER	SUBMERSIBLE PUMP STATION
PINCH	4"	1	FL	MOTOR	SCREEN ROOM - BY SCREEN MANUFACTURER



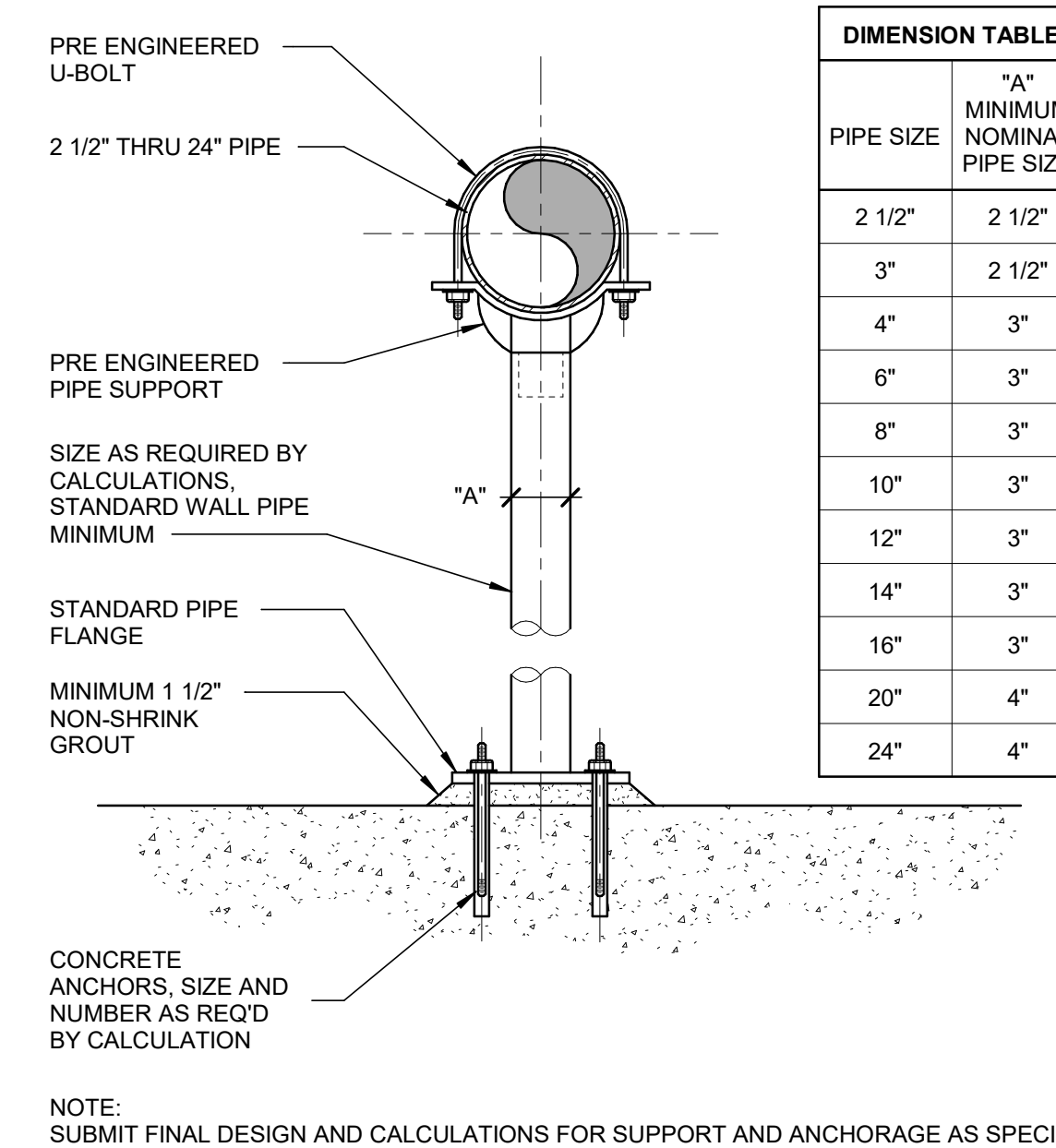
TYPICAL PIPE/DUCT SLEEVE IN EXTERIOR WALL
NO SCALE



3 TYPICAL CONCRETE EQUIPMENT PAD
NOT TO SCALE

- NOTES:**
1. THE CONCRETE FOUNDATION WITH ANCHOR BOLTS SHOWN IS DESIGNED FOR SMALL EQUIP W/O TENSION FORCES ON THE ANCHOR BOLTS.
 2. SIZE, NUMBER, TYPE, LOCATION, AND THREAD PROJECTION OF THE ANCHOR BOLTS SHALL BE DETERMINED BY THE EQUIP MFR AND AS APPROVED BY THE ENGINEER. ANCHOR BOLTS SHALL BE HELD IN POSITION WITH A TEMPLATE OR OTHER ACCEPTABLE MEANS, MATCHING BASE PLATE, WHILE PAD IS BEING PLACED.
 3. ANCHOR BOLT SLEEVES SHALL BE USED TO PROVIDE MIN ANCHOR BOLT MOVEMENT OF 1/2" IN ALL HORIZONTAL DIRECTIONS. THE MIN SLEEVE LENGTH SHALL BE 8 TIMES THE BOLT DIA.
 4. ANCHOR SLEEVES SHALL HAVE A MIN INTERNAL DIAMETER 1" GREATER THAN BOLT DIA AND A MAX INTERNAL DIA OF 3" GREATER THAN BOLT DIA.
 5. EQUIP BASES SHALL BE INSTALLED LEVEL UNLESS INDICATED OTHERWISE.
 6. WEDGES, SHIMS, OR LEVELING NUTS SHALL BE USED TO SUPPORT THE BASE WHILE THE GROUT IS PLACED. WEDGES OR SHIMS SHALL BE REMOVED AFTER GROUT IS SET. PACK VOID WITH GROUT.

2 TYPICAL PIPE/DUCT SLEEVE IN EXTERIOR WALL
NOT TO SCALE



1 PIPE SUPPORT - SADDLE PEDESTAL NON-ADJUSTABLE
NOT TO SCALE

REV#	DATE	DESCRIPTION
3	2023.07.14	ADDENDUM 2
2	2023.07.08	ADDENDUM 1
1	2023.06.24	ISSUED FOR BIDS



WADE TRIM
555 South Saginaw Street, Suite 201
Flint, MI 48502
810.235.2555 / 800.841.0342
FAX: 810.235.4975
www.wadetrim.com

HRC
HUBBELL, ROTH & CLARK, INC.
CONSULTING ENGINEERS SINCE 1915
100 HOLEY DRIVE
BLOOMFIELD HILLS, MICH. P.O. BOX 224
48303 - 0224
PHONE: (248) 454-6200
FAX (248) 454-6212
FAX (248) 454-6212
WEB SITE: http://www.hrc-eng.com

CITY OF FLINT
WPCF WASTE UNLOADING STATION
DETAILS AND SCHEDULES

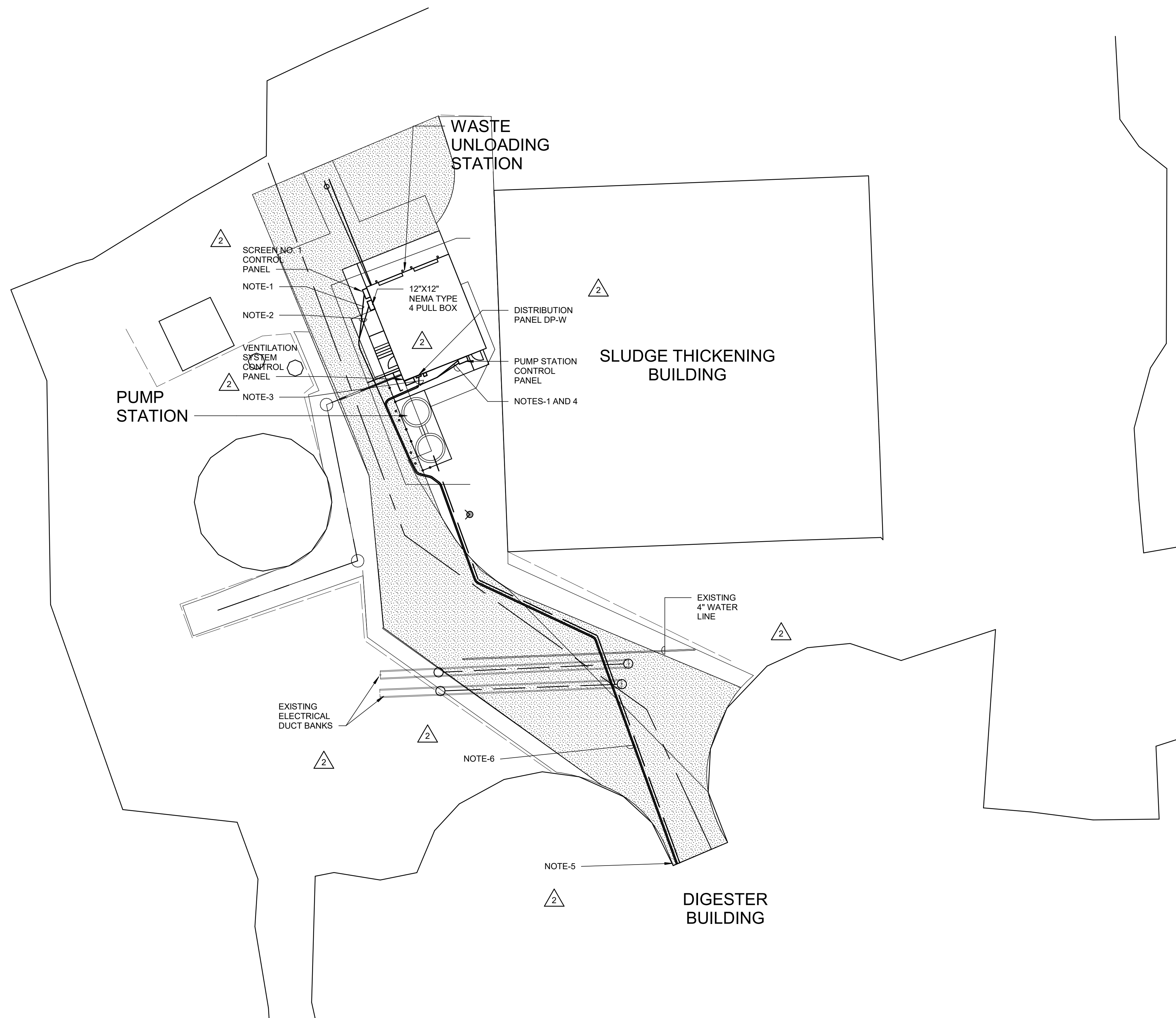
ISSUED FOR: BIDS DATE: 2023.06.24 BY: TSW

JOB NO. COF1076-01F

SHEET D-501

PLOTTED: 7/19/2023 5:05:48 PM

B:\360\COF\1076-7\WPCFWU_HRC_E_R21.rvt



ELECTRICAL SITE PLAN

SCALE: 1" = 20'-0"

PLAN NOTES:

- 4-STRAND FIBER-OPTIC CABLE, 1 1/4". TO NEW FIBER OPTIC SWITCH IN DIGESTER BUILDING.
- 1 1/4" SPARE, EMPTY WITH PULL ROPE.
- 3-#3/0 + 1-#6 GRD., 1 1/2". TO NEW CIRCUIT BREAKER IN MCC-XP3.
- 3-#4 + 1-#8 GRD., 1" C. TO NEW CIRCUIT BREAKER IN MCC-XP3.
- ROUTE CONDUITS BELOW WALL OF DIGESTER BUILDING THEN UP THROUGH FLOOR ALONG WALL AND OVERHEAD TO CONTROL PANEL AND MCC. COORDINATE INSTALLATION WITH NEW PROCESS PIPING AT BUILDING ENTRANCE.
- ROUTE CONDUITS IN TRENCH ADJACENT TO NEW PROCESS PIPING. FIELD VERIFY ALL EXISTING UNDERGROUND UTILITIES. COORDINATE INSTALLATION WITH NEW PIPING.

REV#	DATE	DESCRIPTION	BY
3	2023.07.13	ADDENDUM 2	TSW
2	2023.07.06	ADDENDUM 1	TSW
1	2023.06.24	ISSUED FOR BIDS	TSW



WADE TRIM

555 South Saginaw Street, Suite 201
 Flint, MI 48502
 810.235.2555 / 800.841.0342
 FAX: 810.235.4876
 www.wadetrim.com

HRC
 HUBBELL, ROTH & CLARK, INC.
 CONSULTING ENGINEERS SINCE 1915

555 WILEY DRIVE
 BLOOMFIELD HILLS, MICH. P.O. BOX 224
 48304 - 0224

PHONE: (248) 454-4200
 FAX (Off. Phone): (248) 454-4212
 FAX (Home Phone): (248) 338-2592
 WEB SITE: http://www.hrc-engr.com

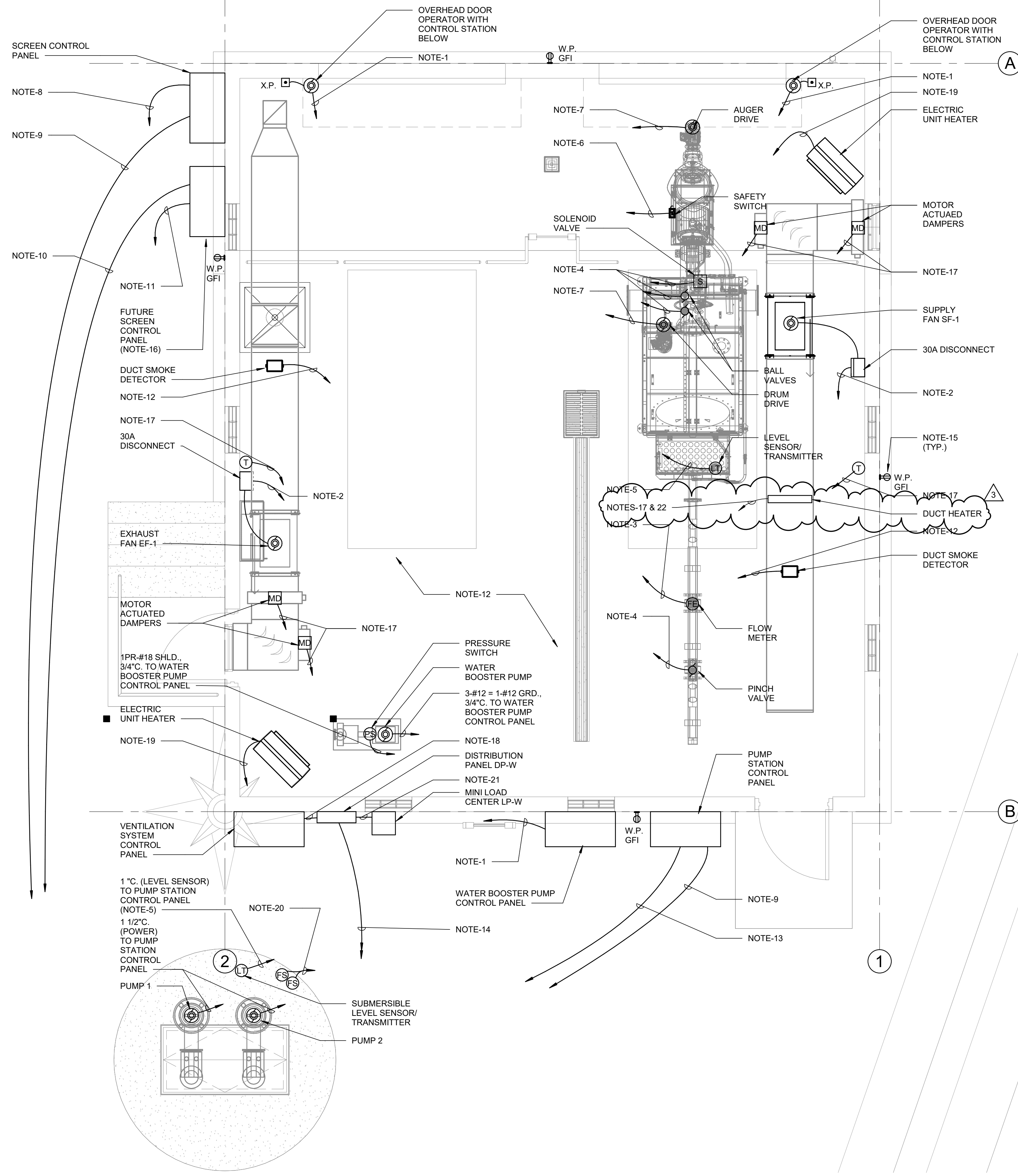
CITY OF FLINT
 WPCF WASTE UNLOADING STATION
 ELECTRICAL SITE PLAN

ISSUED FOR: BIDS DATE: 2023.06.24 BY: TSW

JOB NO.
COF1076-01F

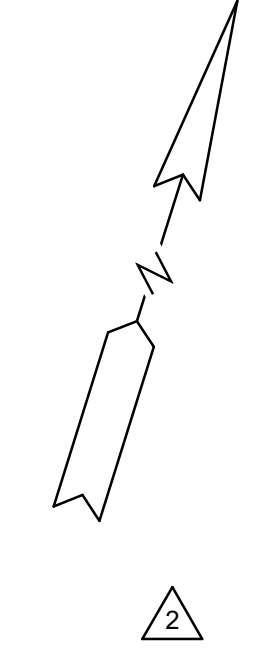
SHEET
E-101

© Wade Trim Group, Inc.



PLAN NOTES:

1. 3-#12 + 1-#12 GRD., 3/4\"C. TO DP-W.
2. 3-#12 + 1-#12 GRD., 3/4\"C. TO VENTILATION SYSTEM CONTROL PANEL.
3. 2PR-#18 SHLD., 3/4\"C. TO SCREEN CONTROL PANEL.
4. 2-#12 + 1-#12 GRD., 3/4\"C. TO SCREEN CONTROL PANEL.
5. 2PR-#18 SHLD., 3/4\"C. (INTRINSICALLY SAFE) TO SCREEN CONTROL PANEL.
6. 2-#14, 3/4\"C. TO SCREEN CONTROL PANEL.
7. 3-#12 + 1-#12 GRD., 3/4\"C. TO SCREEN CONTROL PANEL.
8. 3-#12 + 1-#12 GRD., 1\"C. TO DP-W.
9. 4-STRAND F.O. CABLE, 1 1/4\"C. TO F.O. SWITCH IN NEW CONTROL PANEL LOCATED IN DIGESTER BUILDING.
10. 1 1/4\"C. SPARE (EMPTY WITH PULL ROPE) TO CONTROL PANEL LOCATED IN DIGESTER BUILDING.
11. 1\"C. SPARE (EMPTY WITH PULL ROPE) TO DP-W.
12. THIS AREA IS CLASS 1, DIV. 1, INSTALL CONDUIT, WIRE, AND EQUIPMENT TO MEET NEC REQUIREMENTS.
13. 3-#4 + 1-#8 GRD., 1\"C. TO MCC IN DIGESTER BUILDING.
14. 3-#3/0 + 1-#6 GRD., 1 1/2\"C. TO MCC IN DIGESTER BUILDING.
15. FURNISH AND INSTALL 2-#12 + 1-#12 GRD., 3/4\"C. FROM GFI RECEPTACLE TO LP-W.
16. FURNISH AND INSTALL 12\" X 12\" NEMA TYPE 3R PULL BOX FOR TEMPORARY CONNECTION OF CONDUITS.
17. 2-#12 + 1-#12 GRD., 3/4\"C. TO VENTILATION SYSTEM CONTROL PANEL.
18. 3-#10 + 1-#10 GRD., 3/4\"C.
19. 3-#8 + 1-#10 GRD., 3/4\"C. TO DP-W.
20. FLOAT SWITCH CABLES, 1 1/2\"C. TO PUMP STATION CONTROL PANEL.
21. 2-#10 + 1-#10 GRD., 3/4\"C.
22. 3-#10 + 1-#10 GRD., 3/4\" C. TO DP-W



PLOTTED 7/19/2023 5:08:34 PM

BIN:360/COF1076-WPCFWLU_HRC_E_R21.rvt

WASTE UNLOADING STATION ELECTRICAL POWER PLAN

SCALE: 3/8\" = 1'-0\"

REV#	DATE	DESCRIPTION
3	2023.07.13	ADDENDUM 2
2	2023.07.06	ADDENDUM 1
1	2023.06.24	ISSUED FOR BIDS



WADE TRIM
 555 South Saginaw Street, Suite 201
 Flint, MI 48502
 810.235.2555 / 800.841.0342
 FAX: 810.235.4975
 www.wadefirm.com

HRC
 HUBBELL, ROTH & CLARK, INC.
 CONSULTING ENGINEERS SINCE 1915
 555 WILEY DRIVE
 BLOOMFIELD HILLS, MICH. P.O. BOX 254
 48301-0254
 PHONE: (248) 854-4200
 FAX (Off. Phone): (248) 854-4212
 FAX (Home Phone): (248) 338-2592
 WEB SITE: http://www.hrc-eng.com

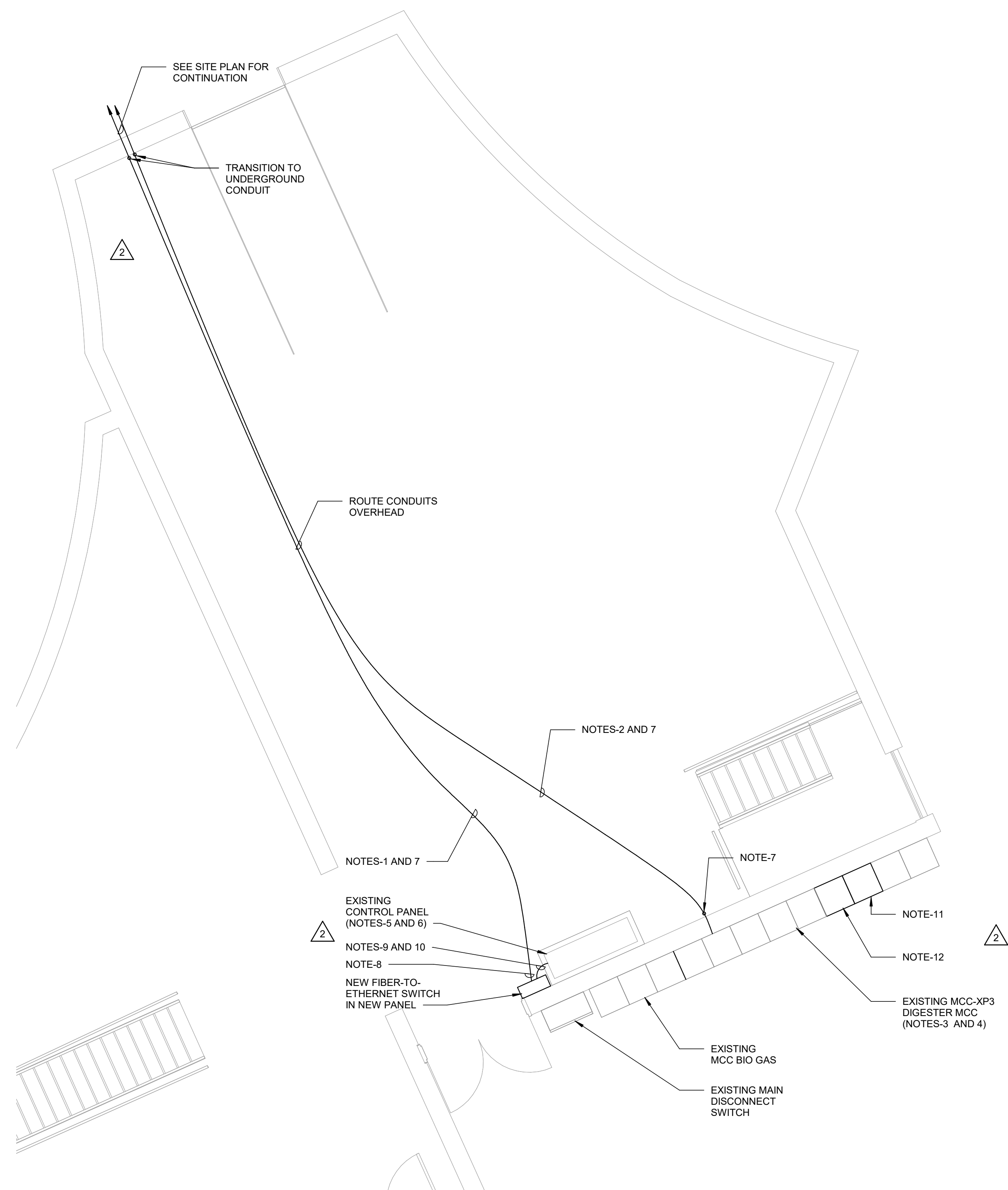
**CITY OF FLINT
 WPCFW WASTE UNLOADING STATION
 WASTE UNLOADING STATION ELECTRICAL
 PLAN**

ISSUED FOR: BIDS DATE: 2023.06.24 BY: TSW

JOB NO.
COF1076-01F

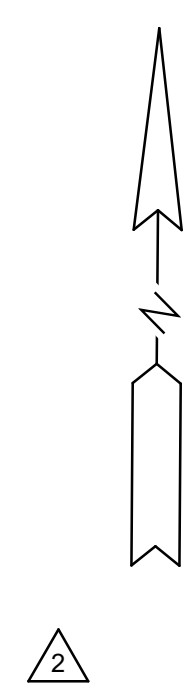
SHEET
E-104

© Wade Firm Group, Inc.



- PLAN NOTES:**
- 2-1 1/4" C. WITH 4-STRAND FIBER OPTIC CABLE IN EACH + 1 -1 1/4" C. SPARE, EMPTY WITH PULL ROPE.
 - 3-#4 + 1-#8 GRD., 1" C. + 3-#3/0 + 1-#6 GRD., 1 1/2" C.
 - IN MCC-XP3, FURNISH AND INSTALL NEW MCC BUCKET WITH NEW 75A, 3-POLE CIRCUIT BREAKER TO FEED SUBMERSIBLE PUMP STATION.
 - IN MCC-XP3, FURNISH AND INSTALL NEW MCC BUCKET WITH NEW 150A, 3-POLE CIRCUIT BREAKER TO FEED DP-W.
 - CONNECT NEW FIBER OPTIC CABLES TO NEW FIBER OPTIC-TO-ETHERNET SWITCH IN NEW CONTROL PANEL.
 - IN EXISTING CONTROL PANEL REMOVE AND REPLACE EXISTING FIBER OPTIC-TO-ETHERNET SWITCH. NEW SWITCH TO HAVE 8-ETHERNET AND 8-FIBER OPTIC PORTS MINIMUM.
 - CORE THROUGH WALL FOR INSTALLATION OF NEW CONDUITS. SEAL AROUND CONDUITS WITH NON-METALLIC NON-SHRINK GROUT TO MATCH EXISTING.
 - CAT. 6 CABLE, 3/4" C. CONNECT NEW FIBER-TO-ETHERNET SWITCH TO EXISTING SWITCH.
 - FURNISH AND INSTALL CAT6 JUMPER, 3/4" C. TO EXISTING ETHERNET SWITCH IN EXISTING PANEL.
 - INSTALL 2-#12 + 1-#12 GRD., 3/4" C. FROM EXISTING POWER DISTRIBUTION IN EXISTING C.P. TO NEW FIBER-TO-ETHERNET SWITCH PANEL.
 - INSTALL NEW MCC BUCKET AND 80A, 3-POLE CIRCUIT BREAKER FOR SUBMERSIBLE PUMP STATION IN THIS SECTION.
 - INSTALL NEW MCC BUCKET AND 200A, 3-POLE CIRCUIT BREAKER IN THIS SECTION, TO FEED DP-W.

PARTIAL DIGESTER BUILDING ELECTRICAL PLAN
SCALE: 1/4" = 1'-0"



REV#	DATE	DESCRIPTION	BY
3	2023.07.13	ADDENDUM 2	TSW
2	2023.07.06	ADDENDUM 1	TSW
1	2023.06.24	ISSUED FOR BIDS	TSW



WADE TRIM

555 South Saginaw Street, Suite 201
Flint, MI 48502
810.235.2555 / 800.841.0342
FAX: 810.235.4975
www.wadetrिम.com

HRC
HUBBELL, ROTH & CLARK, INC.
CONSULTING ENGINEERS SINCE 1915

555 WILEY DRIVE
BLOOMFIELD HILLS, MICH. P.O. BOX 244
48304 - 0244

PHONE: (248) 854-4200
FAX (Ext. Phone): (248) 854-4212
FAX (Ext. Phone): (248) 338-2592
WEB SITE: http://www.hrc-eng.com

CITY OF FLINT
WPCF WASTE UNLOADING STATION
DIGESTER BUILDING ELECTRICAL PLAN

ISSUED FOR: BIDS DATE: 2023.06.24 BY: TSW

JOB NO.
COF1076-01F

SHEET
E-105

DP-F
 Location:
 Supply From: Surface
 Mounting: Type 3R
 Enclosure: Type 3R
 Notes:

Volts: 480V
 Phases: 3
 Wires: 3
 Bus:

A.I.C. Rating:
 Mains Type: 150 A
 Mains Rating: 150 A
 MCB Rating: 150 A

CKT	Circuit Description	Trip	P	Wire Size	A		B		C		Wire Size	P	Trip	Circuit Description	CKT
1	RECEIVING SCREEN CONTROL PANEL	20 A	3	3-#12, 1-#12, 1-#12	1.16	5.00	1.16	5.00			3-#8, 1-#10	3	40 A	ELECTRIC UNIT HEATER EUH-1	2
3															4
5															6
7	VENTILATION SYSTEM CONTROL PANEL	30 A	3	3-#10, 1-#10	1.16	5.00	1.16	5.00			3-#8, 1-#10	3	40 A	ELECTRIC UNIT HEATER EUH-2	8
9															10
11															12
13	EAST OVERHEAD DOOR OPERATOR	20 A	3	3-#12, 1-#12, 1-#12	0.44	0.75	0.44	0.63			2-#10, 1-#10	2	30 A	MINI LOAD CENTER LP-W	14
15															16
17															18
19					0.44	0.00					3-#12, 1-#12, 1-#12	3	20 A	FUTURE SCREEN CONTROL PANEL	20
21	WEST OVERHEAD DOOR OPERATOR	20 A	3	3-#12, 1-#12, 1-#12			0.44	0.00							22
23															24
25	DUCT HEATER	30 A	3	3-#10+1-#10	0.00	2.49		2.49	0.44	2.49	3-#12, 1-#12, 1-#12	3	20 A	WATER BOOSTER PUMP CONTROL PANEL	26
27															28
29									0.00	0.00					30
31					0.00	0.00					--	3	20 A	Spare	32
33	Spare	20 A	3	--			0.00	0.00							34
35									0.00	--		1	--	Space	36
37	Space	--	1	--	--	--						1	--	Space	38
39	Space	--	1	--			--	--				1	--	Space	40
41	Space	--	1	--					--	--		1	--	Space	42
Total Load:					15.68 kVA		15.57 kVA		14.96 kVA						
Total Amps:					57 A		57 A		54 A						

Load Classification	Connected Load	Demand Factor	Estimated Demand	Panel Totals
Equipment	0 VA	0.00%	0 VA	
Heating	30000 VA	100.00%	30000 VA	Total Conn. Load: 46218 VA
Lighting	6 VA	100.00%	6 VA	Total Est. Demand: 47206 VA
Lighting - Dwelling Unit	300 VA	100.00%	300 VA	Total Conn.: 56 A
Lighting - Exterior	280 VA	125.00%	350 VA	Total Est. Demand: 57 A
Motor	17124 VA	105.83%	18122 VA	
Other	90 VA	100.00%	90 VA	
Power	720 VA	100.00%	720 VA	

LP-W
 Location:
 Supply From: DP-F
 Mounting: Surface
 Enclosure: Type 3R
 Notes:

Volts: 208V/120V Single
 Phases: 1
 Wires: 3

A.I.C. Rating:
 Mains Type: MCB
 Mains Rating: 50 A
 MCB Rating: 50 A

CKT	Circuit Description	Trip	P	Wire Size	A		B		Wire Size	P	Trip	Circuit Description	CKT
1	LIGHTS - INTERIOR	20 A	1	1-#12, 1-#12, 1-#12	0.09	0.31			1-#12, 1-#12, 1-#12	1	20 A	EXIT AND EMERG. LGTS	2
3	LIGHTS - EXTERIOR	20 A	1	1-#12, 1-#12, 1-#12			0.28	0.36	1-#12, 1-#12, 1-#12	1	20 A	RECEPTACLES - S & W...	4
5	RECEPTACLES - N & E...	20 A	1	1-#12, 1-#12, 1-#12	0.36	0.00			--	1	20 A	Spare	6
7	Spare	20 A	1	--			0.00	0.00	--	1	20 A	Spare	8
9	Spare	20 A	1	--	0.00	0.00			--	1	20 A	Spare	10
11	Space	--	1	--			--	--	--	1	--	Space	12
13	Space	--	1	--			--	--	--	1	--	Space	14
15	Space	--	1	--			--	--	--	1	--	Space	16
Total Load:					0.75 kVA		0.63 kVA						
Total Amps:					7 A		6 A						

Load Classification	Connected Load	Demand Factor	Estimated Demand	Panel Totals
Lighting	6 VA	100.00%	6 VA	
Lighting - Dwelling Unit	300 VA	100.00%	300 VA	Total Conn. Load: 1379 VA
Lighting - Exterior	280 VA	125.00%	350 VA	Total Est. Demand: 1448 VA
Other	90 VA	100.00%	90 VA	Total Conn.: 7 A
Power	720 VA	100.00%	720 VA	Total Est. Demand: 7 A

REV#	DATE	DESCRIPTION
3	2023.07.13	ADDENDUM 2
2	2023.07.08	ADDENDUM 1
1	2023.06.24	ISSUED FOR BIDS



WADE TRIM
 555 South Saginaw Street, Suite 201
 Flint, MI 48502
 810.235.2555 / 800.841.0342
 FAX: 810.235.4875
 www.wadefirm.com

HRC
 HUBBELL, ROTH & CLARK, INC.
 CONSULTING ENGINEERS SINCE 1915
 555 WILEY DRIVE
 BLOOMFIELD HILLS, MICH.
 P.O. BOX 244
 48304 - 0244
 PHONE: (248) 854-4200
 FAX (Off. Phone): (248) 854-4212
 FAX (Home Phone): (248) 338-2592
 WEB SITE: http://www.hrc-engr.com

CITY OF FLINT
 WPCF WASTE UNLOADING STATION
 PANEL SCHEDULES

ISSUED FOR: BIDS DATE: 2023.06.24 BY: TSW

JOB NO. COF1076-01F
 SHEET E-601