



City of Flint

Department of Purchases & Supplies

Sheldon A. Neeley

TO: All Proposers
FROM: Lauren Rowley
Purchasing Manager
DATE: **July 13, 2021**
SUBJECT: **Addendum #03** – Bid# 22000048 – WPC Third Avenue Pumping Station
Improvements

This addendum has been issued because of the following:

1. Exhibit 3 Part 2C – Additional Drawings

All other bidding terms, requirements, and conditions continue as indicated in the remaining original bid documents.

The Purchasing Manager, Lauren Rowley, is an officer for the City of Flint with respect to this RFP.

In the submission of their proposal, Proposer must acknowledge receipt of this addendum. Proposer shall acknowledge this addendum by signing and returning one copy of this notice with their submission.

Company Name: _____

Address: _____

City / State / Zip: _____

Telephone: _____ Fax: _____ Email: _____

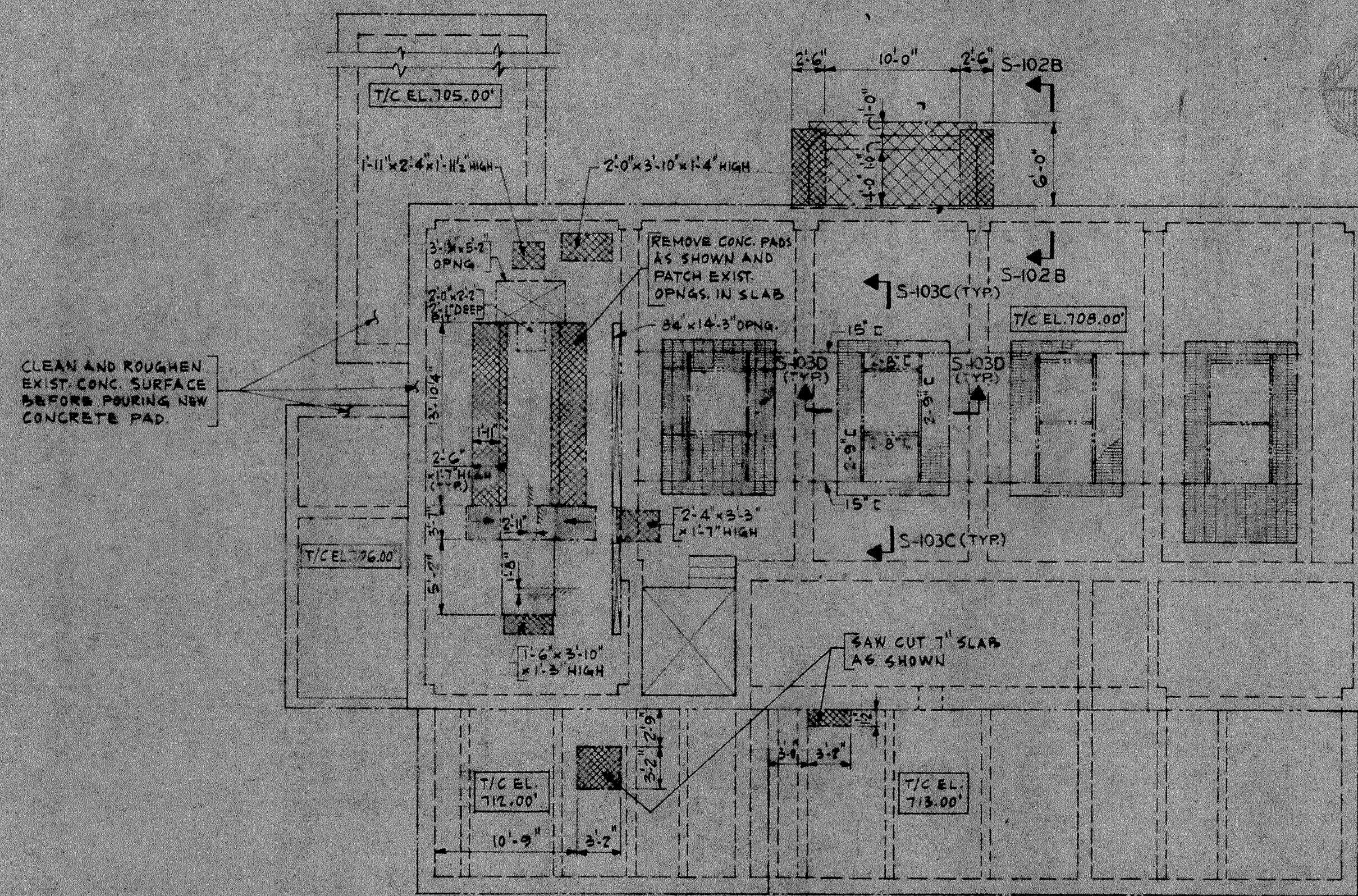
Print Name: _____ Title: _____

Signature: _____ Date: _____

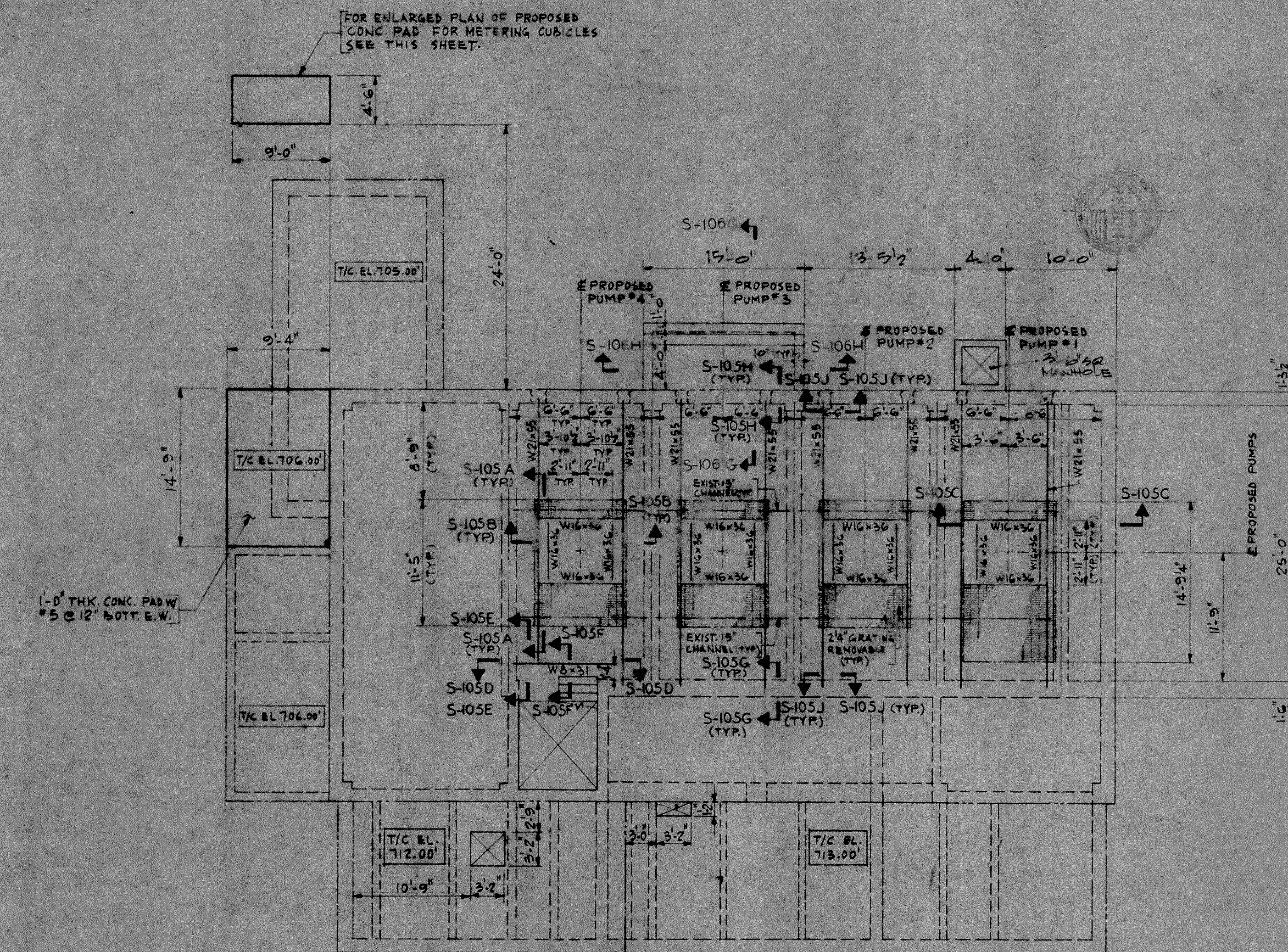
Thank you,


Lauren Rowley
Purchasing Manager

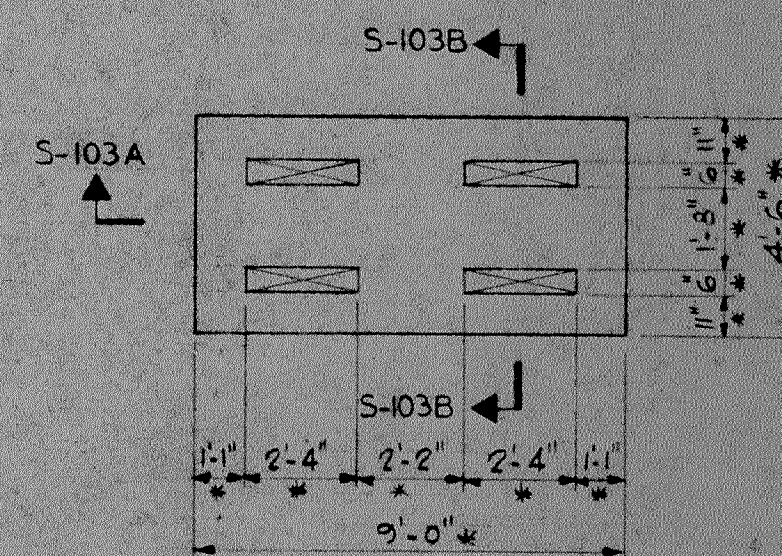
Exhibit 3



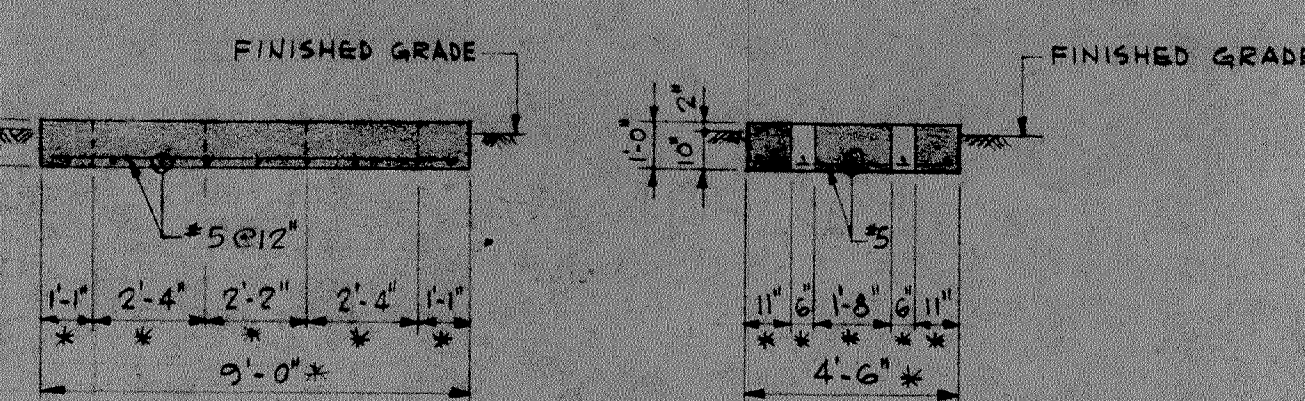
EXISTING GRADE FLOOR PLAN
1/8" = 1'-0"



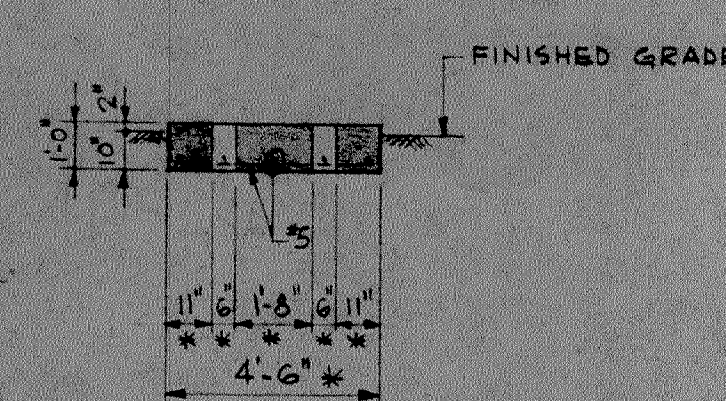
PROPOSED GRADE FLOOR PLAN
1/8" = 1'-0"



PLAN
1/4" = 1'-0"



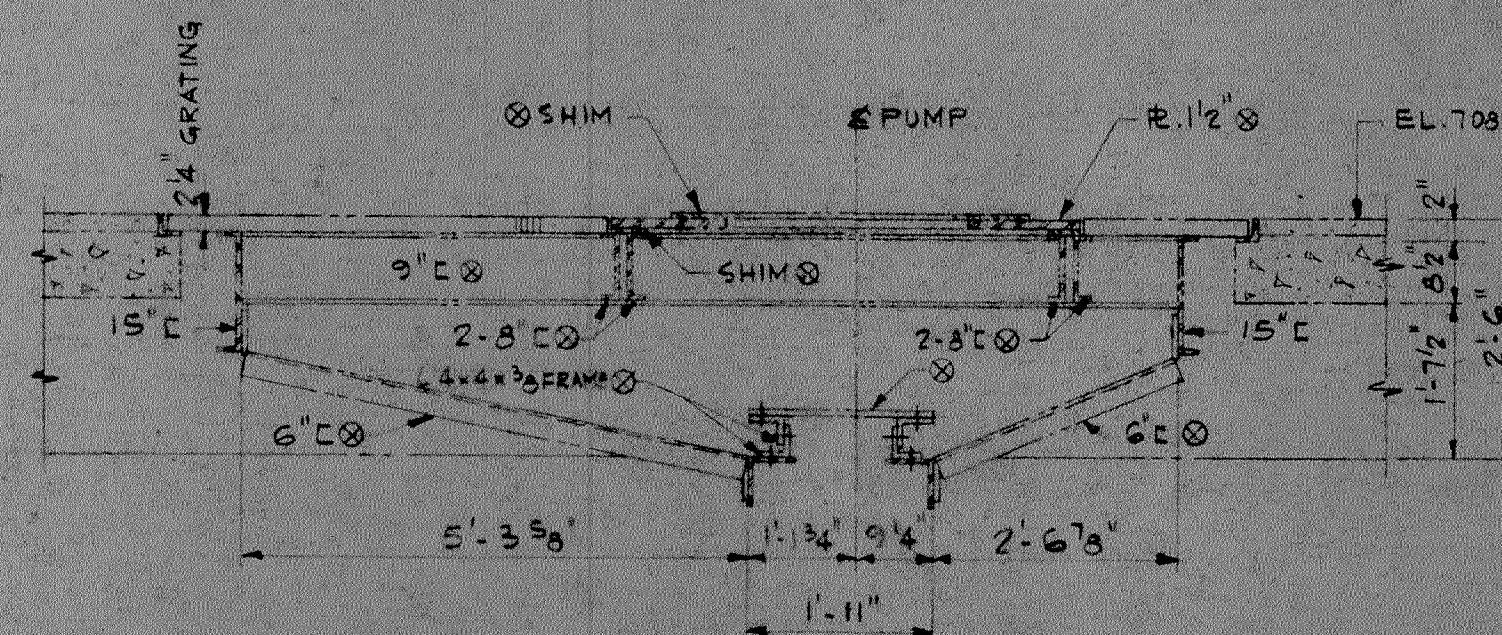
SECTION S-103A
1/4" = 1'-0"



SECTION S-103B
1/4" = 1'-0"

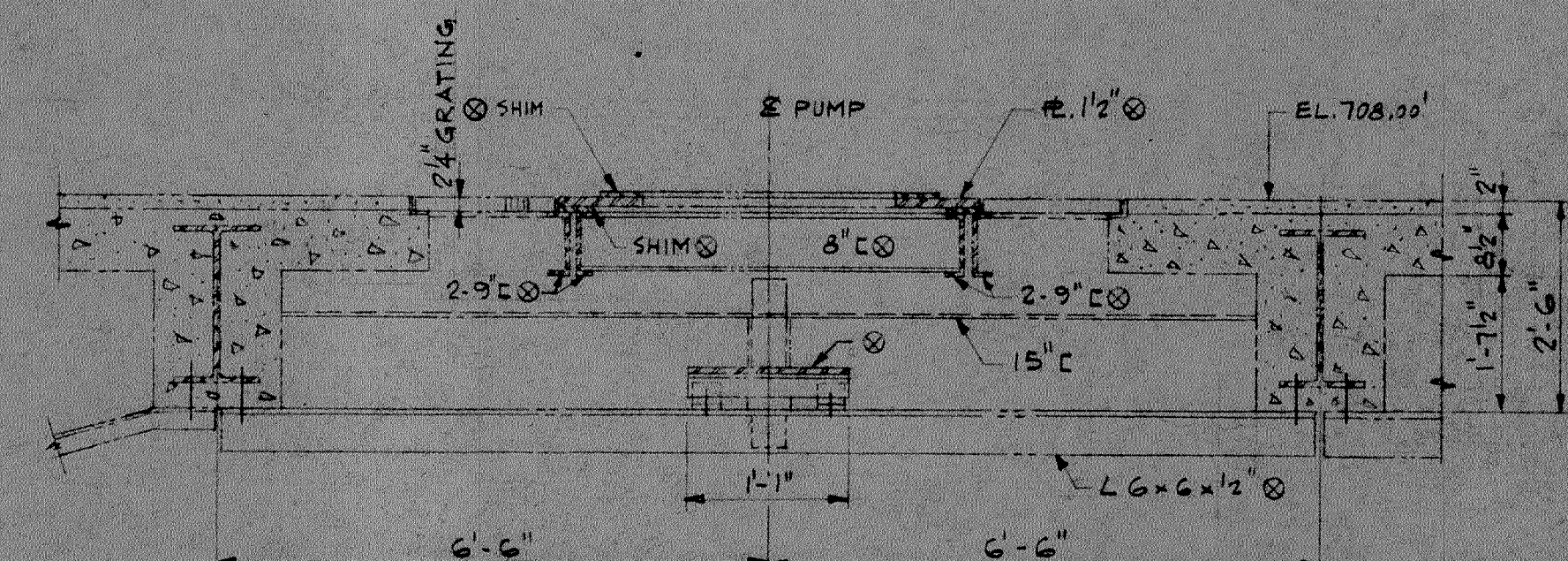
NOTE: FOR LOCATION OF ANCHOR BOLTS SEE MANUFACTURER DRWS.

PROPOSED CONCRETE PAD FOR
METERING CUBICLES



SECTION S-103C(TYP 4 PLACES)
1/2" = 1'-0"

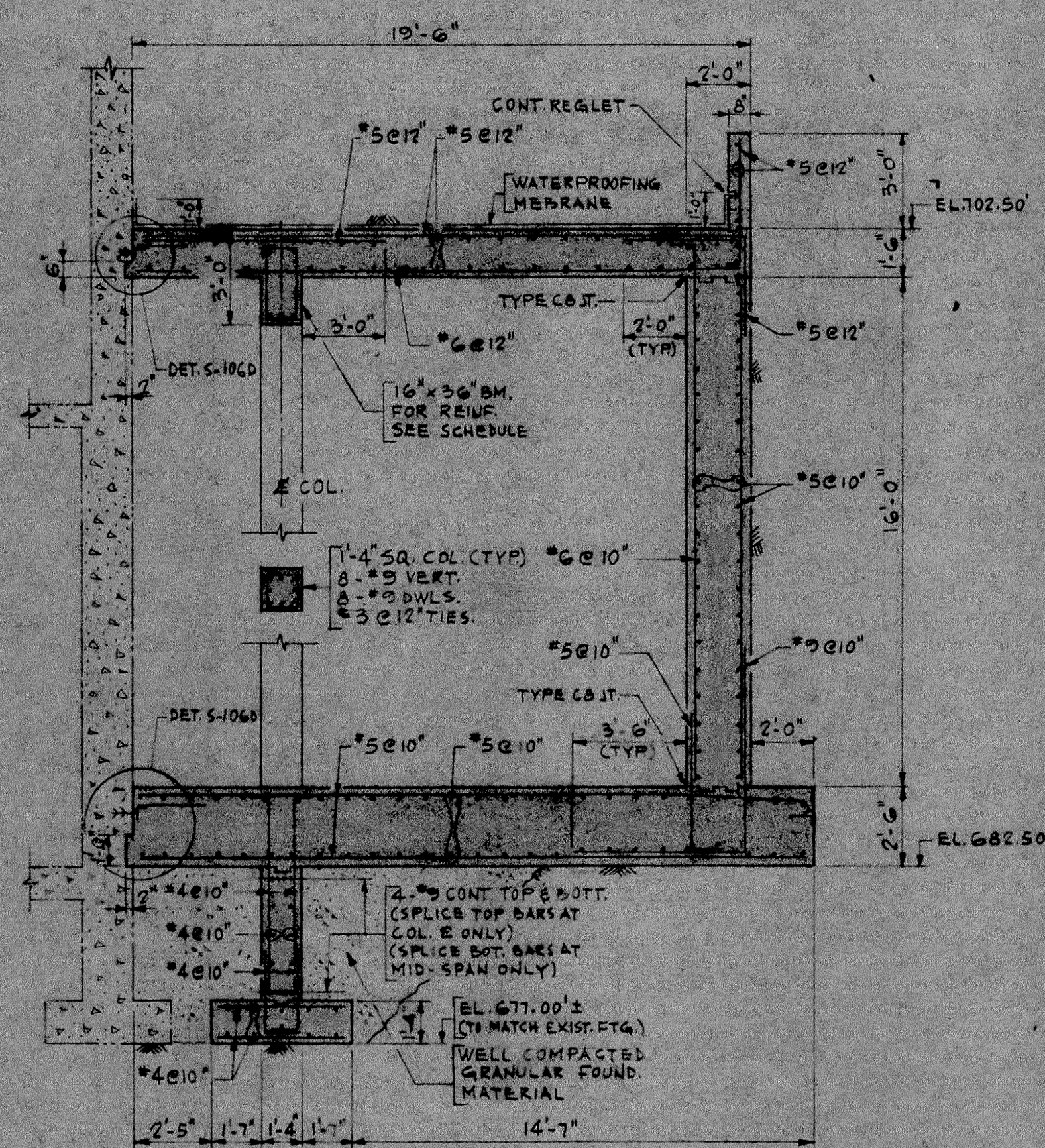
NOTE: ALL STRUCTURAL STL. MEMBERS MARKED THUS ⊗ SHALL BE REMOVED.



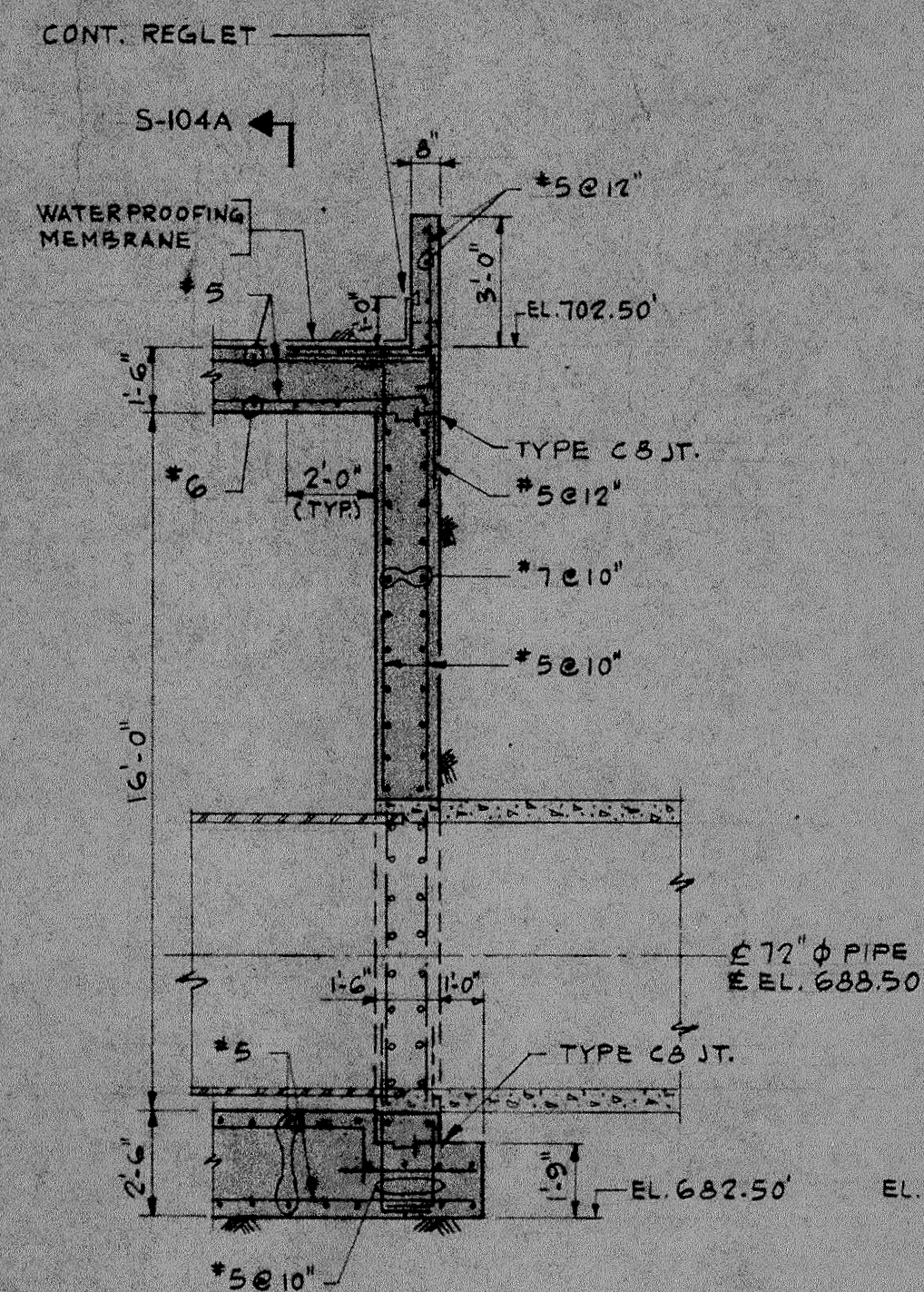
SECTION S-103D(TYP 4 PLACES)
1/2" = 1'-0"

NOTE: ALL STRUCTURAL STL. MEMBERS MARKED THUS ⊗ SHALL BE REMOVED.

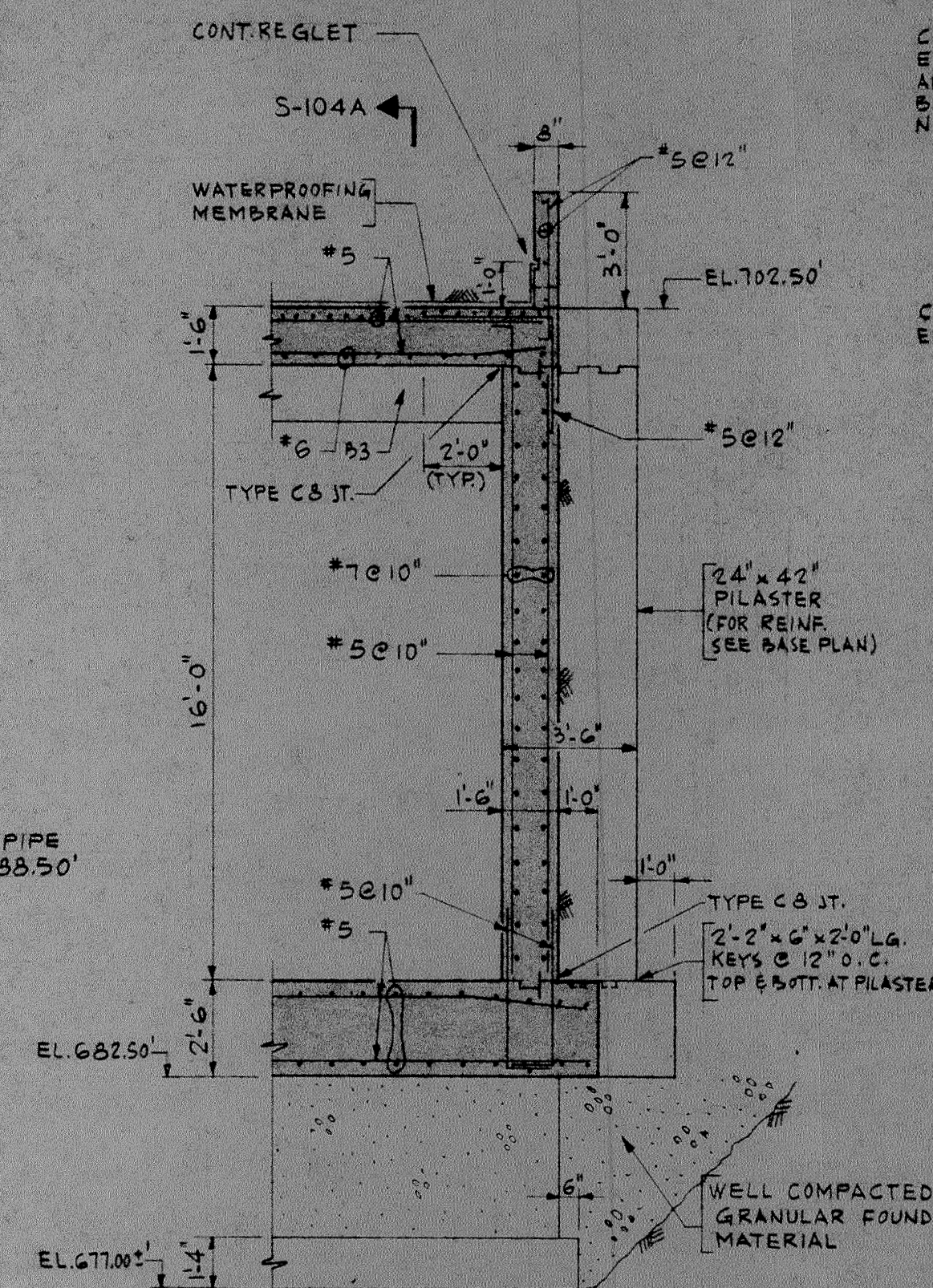
CITY OF FLINT, MICHIGAN WATER POLLUTION CONTROL PLANT IMPROVEMENTS AND MODIFICATIONS			
EXISTING THIRD AVENUE PUMPING STATION GRADE FLOOR PLAN			
DRAWN BY: V.P.	CONSORE, TOWNSEND & ASSOCIATES IN MICHIGAN CONSULTING ENGINEERS	SCALE: AS NOTED	
CHECKED BY: R.C.		REVISION:	
APPROVED BY:		SHEET NO. S-103	
		OF S-116 SHEETS	



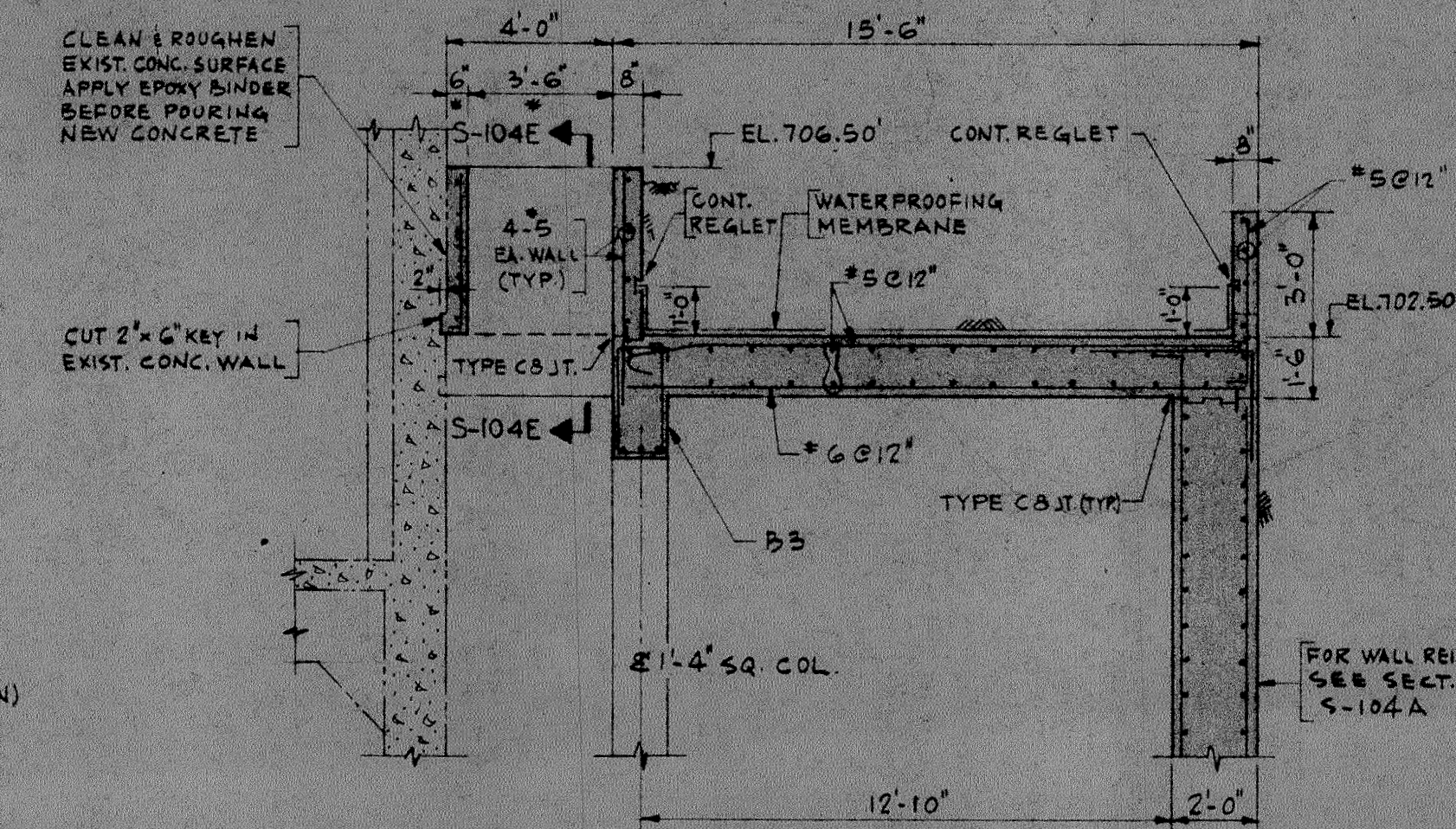
SECTION S-104A



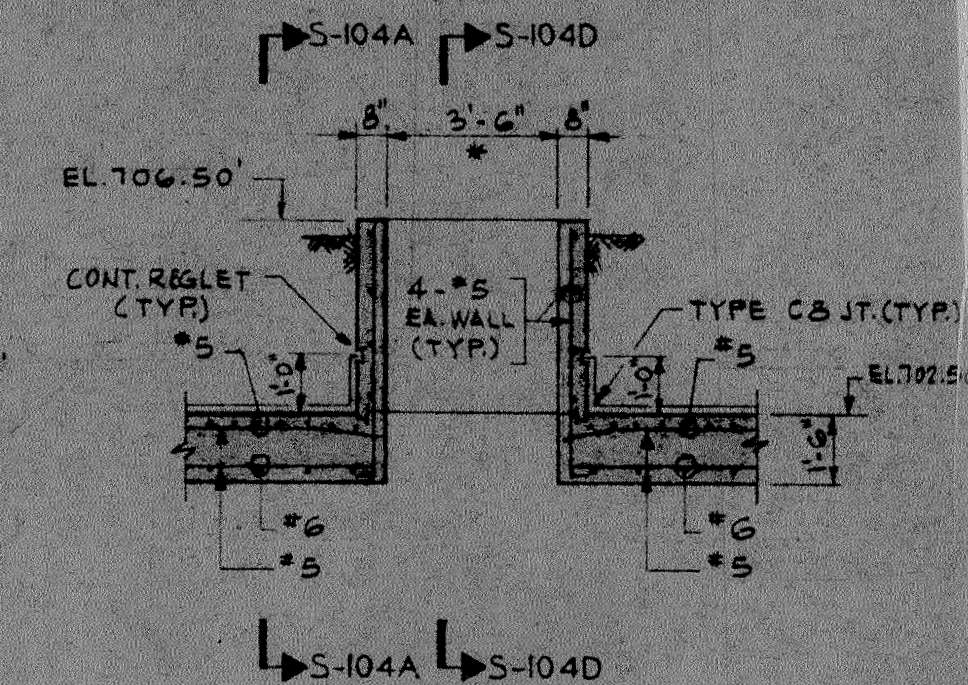
SECTION S-104B



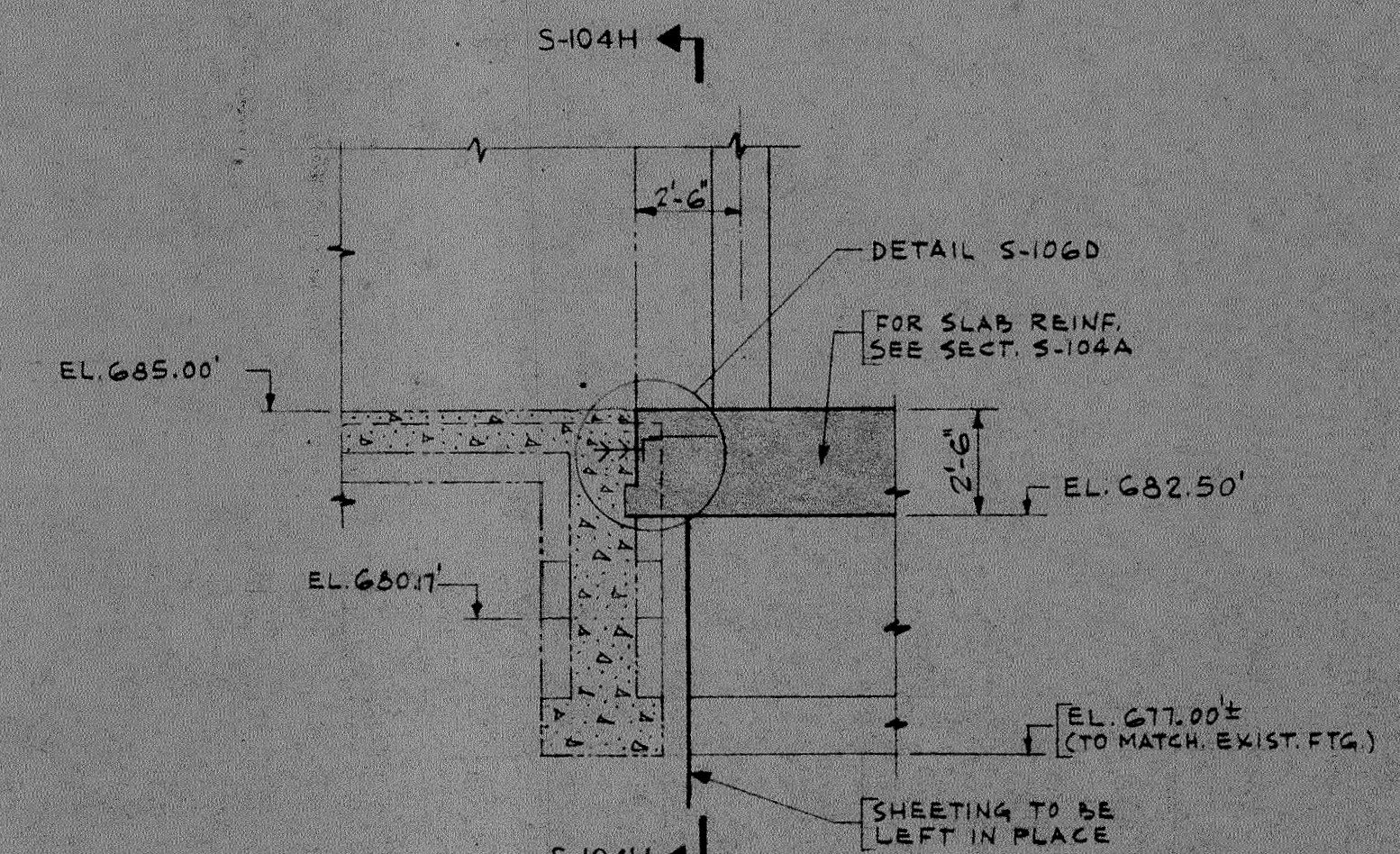
SECTION S-104C



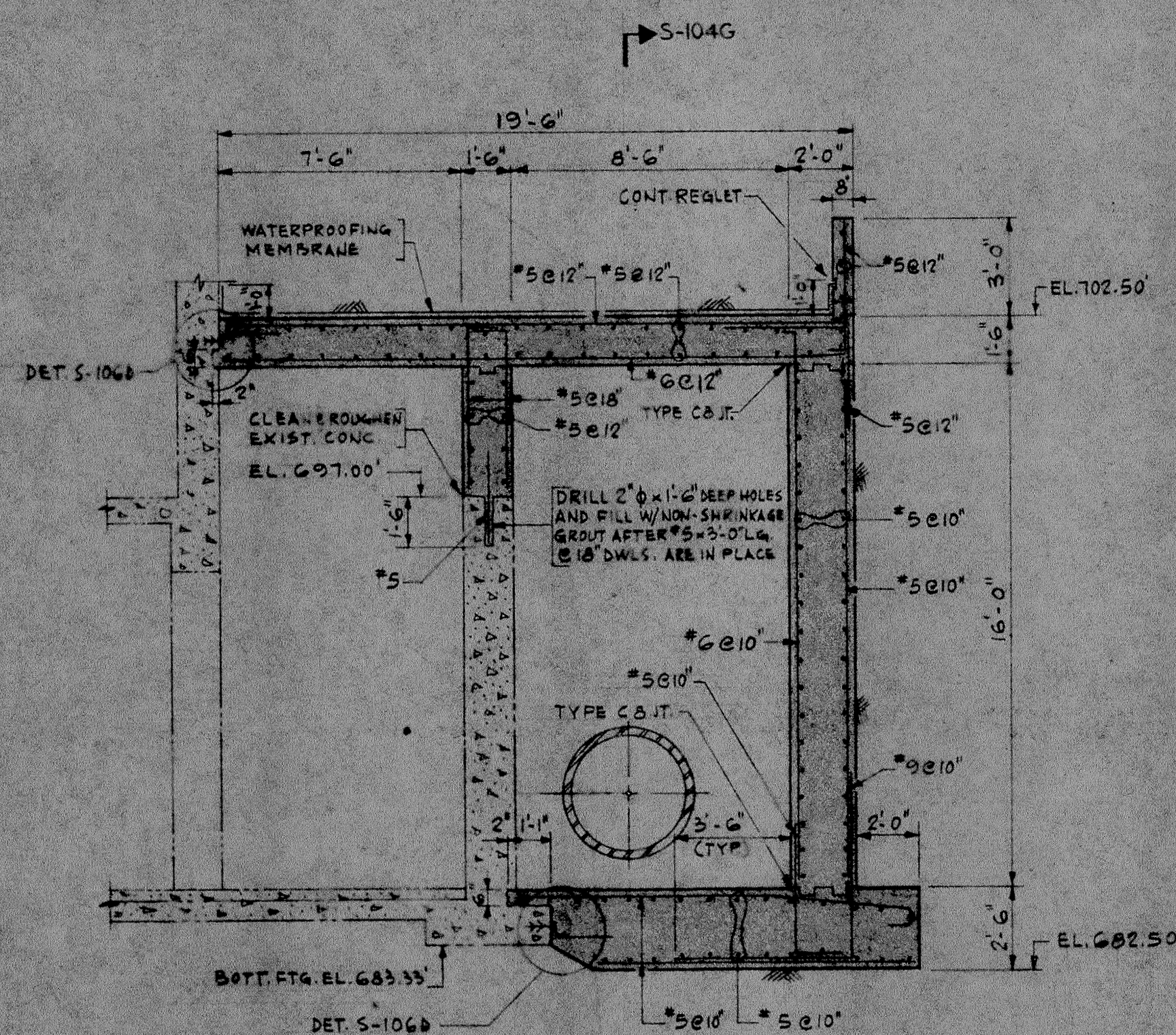
SECTION S-104D



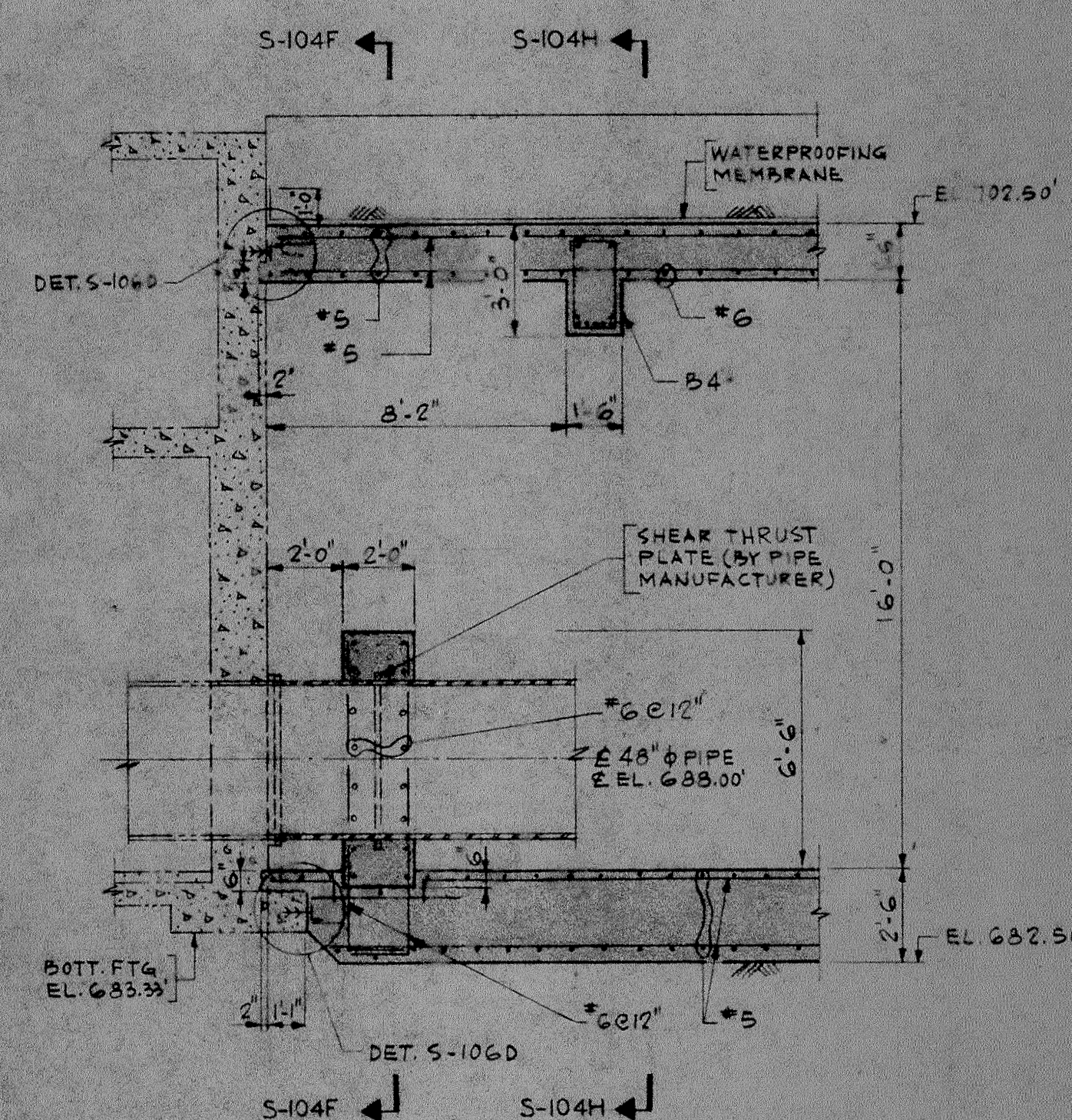
SECTION S-104E



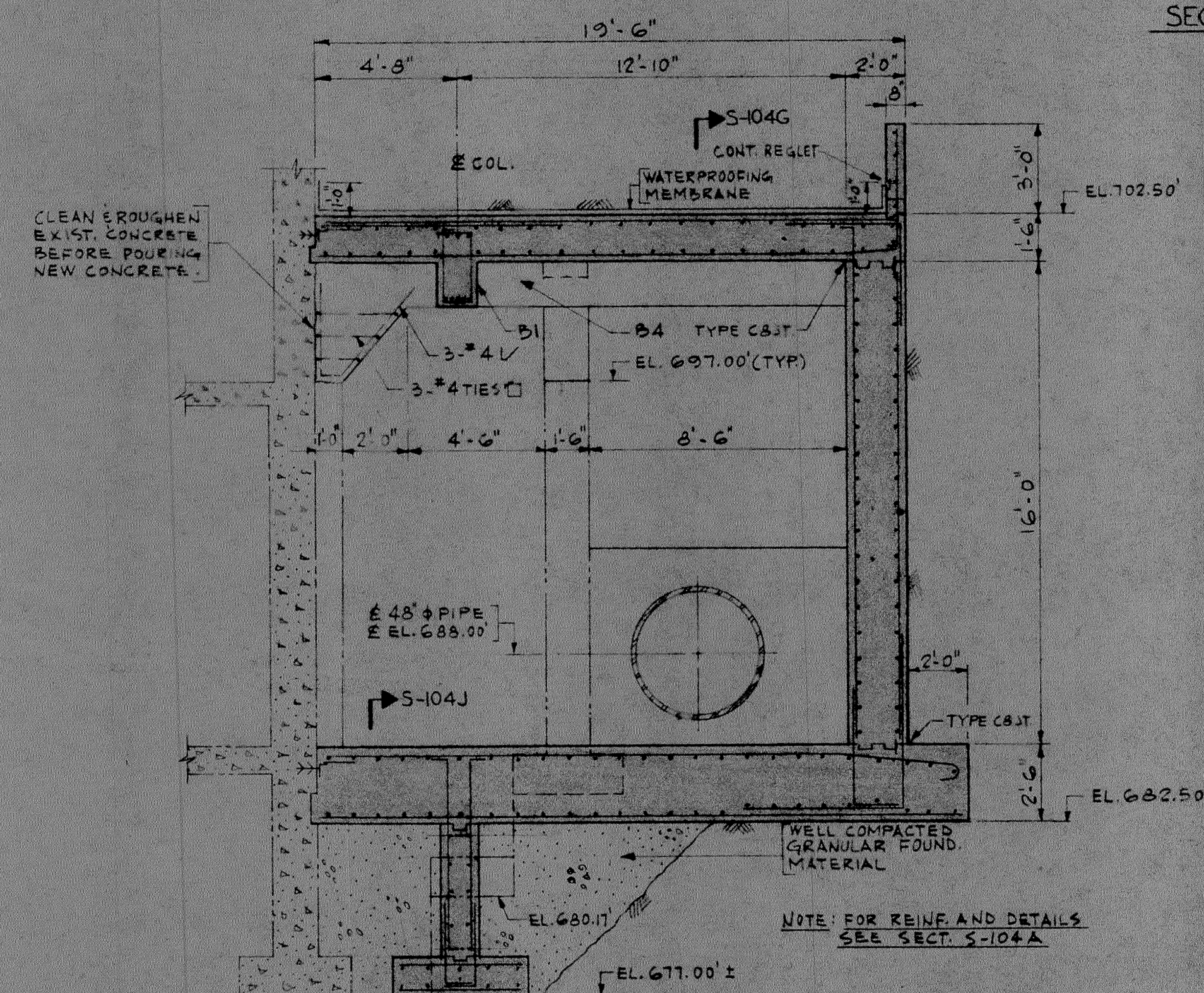
SECTION S-104J



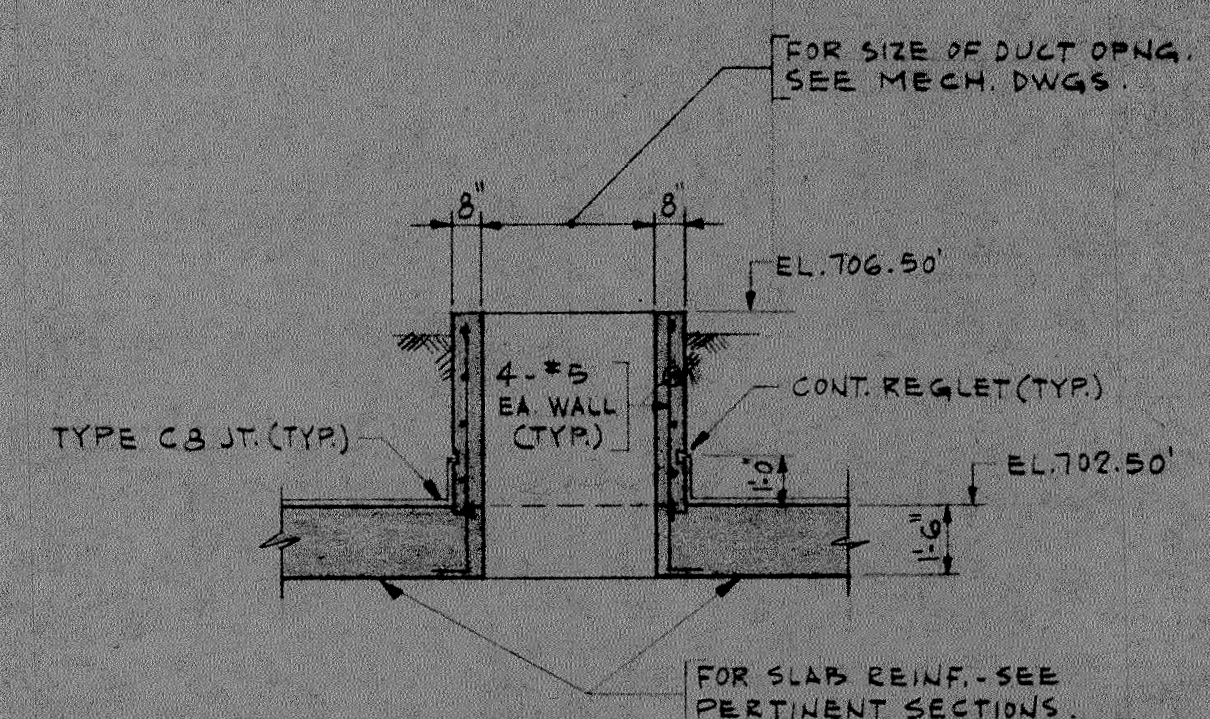
SECTION S-104G



SECTION S-104F

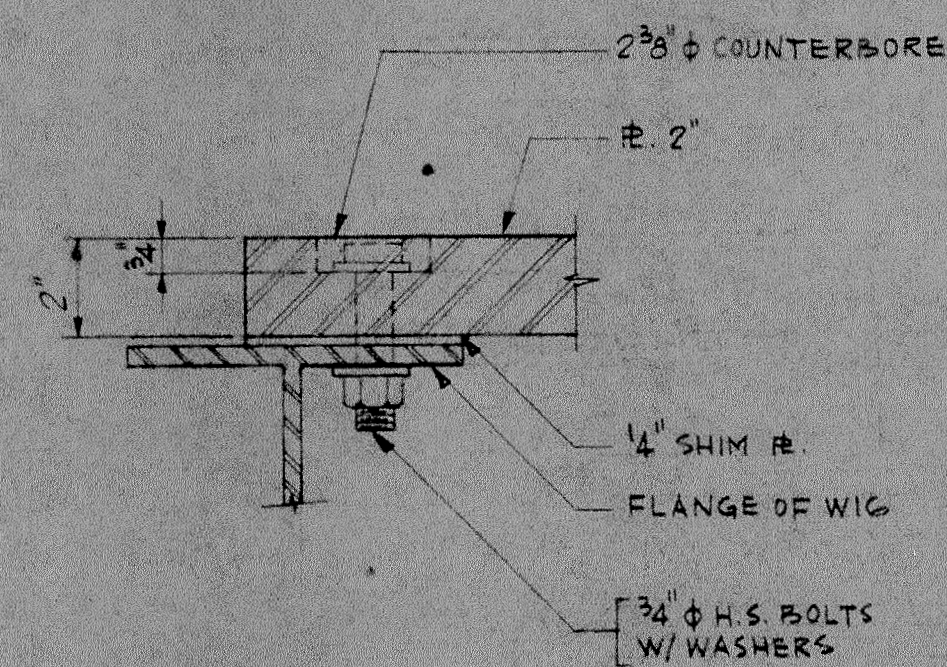
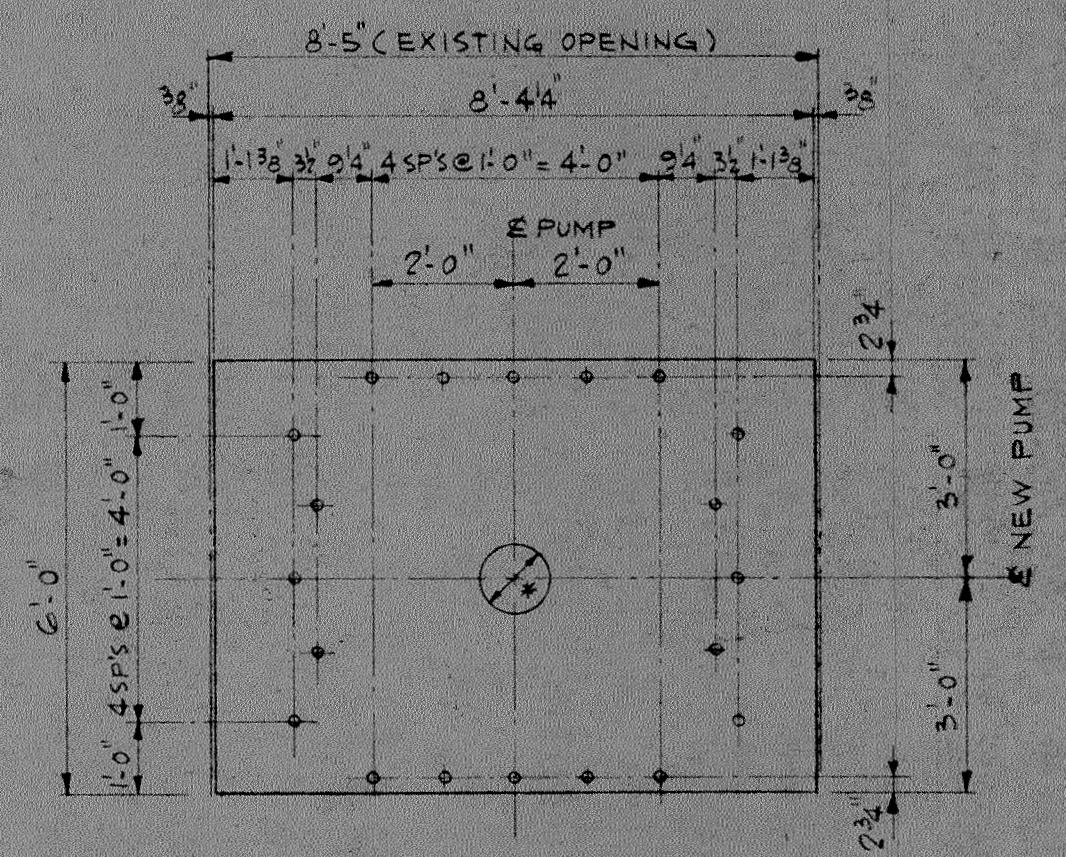
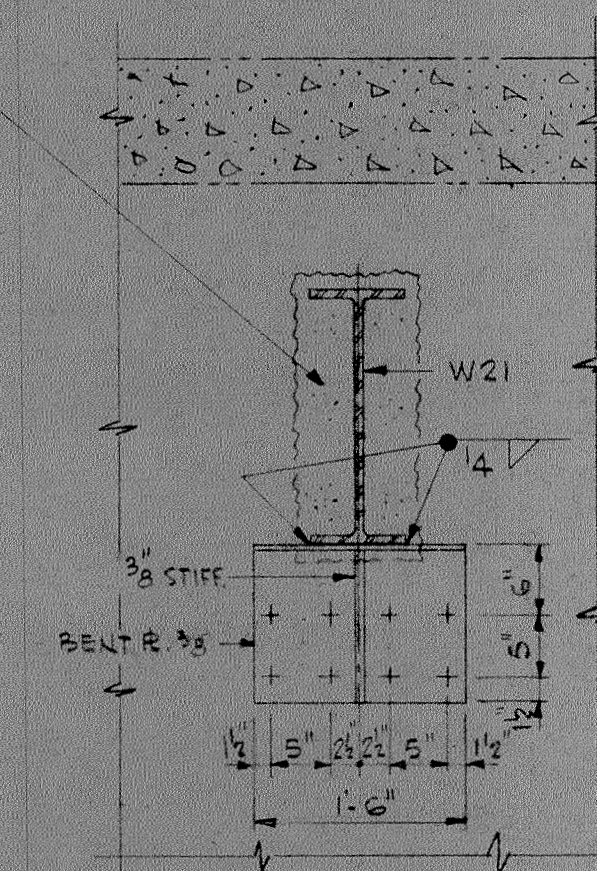
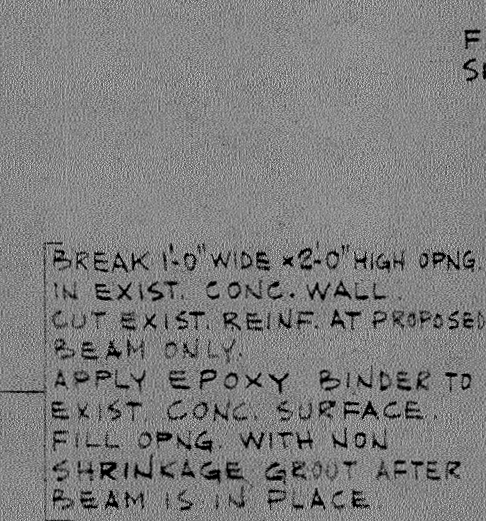
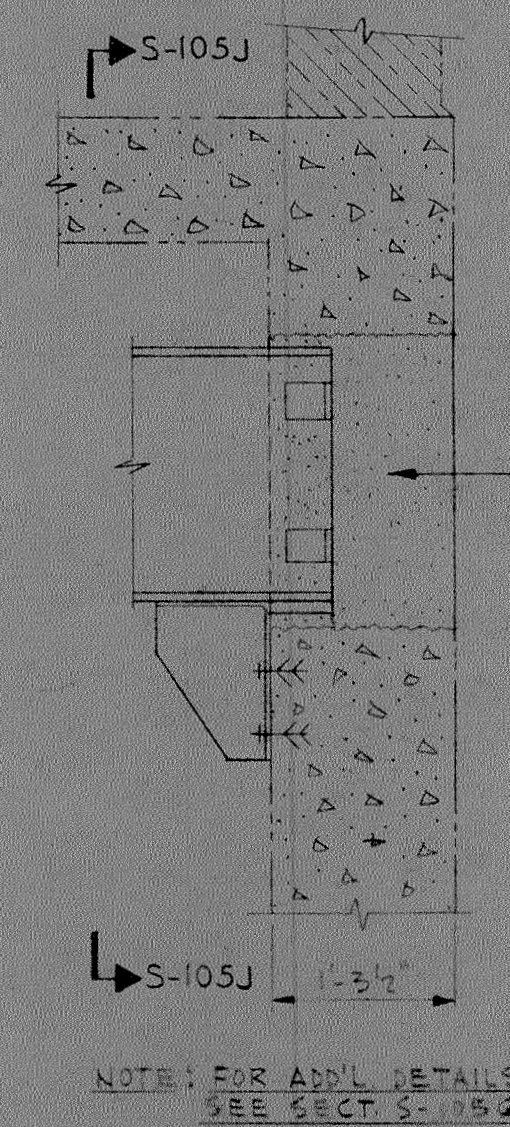
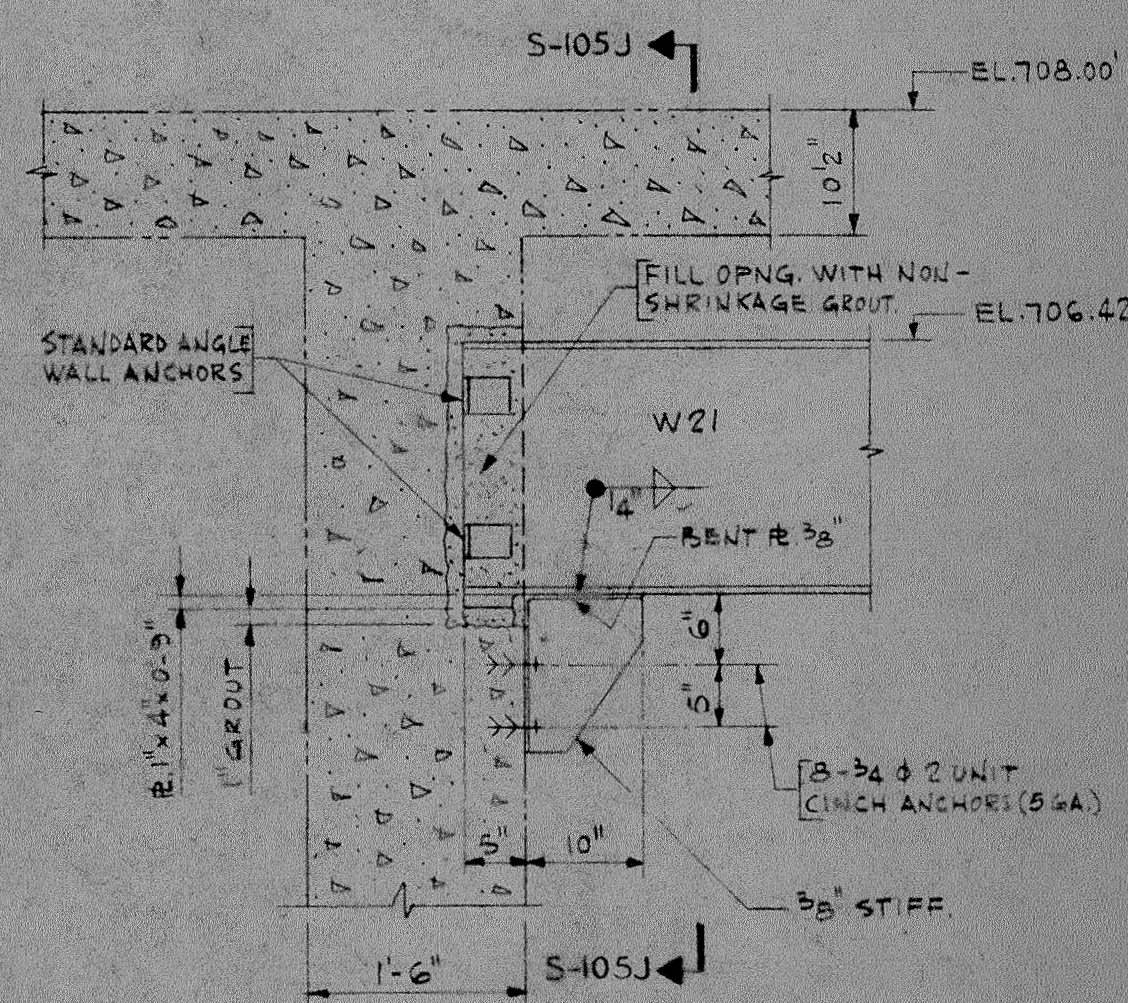
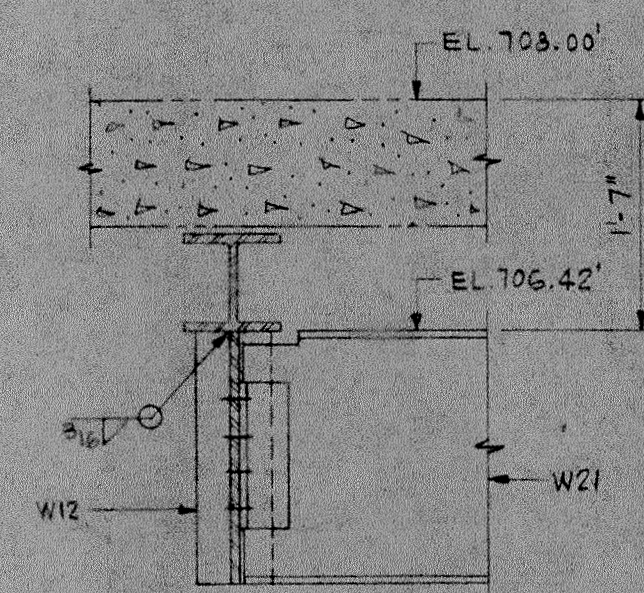
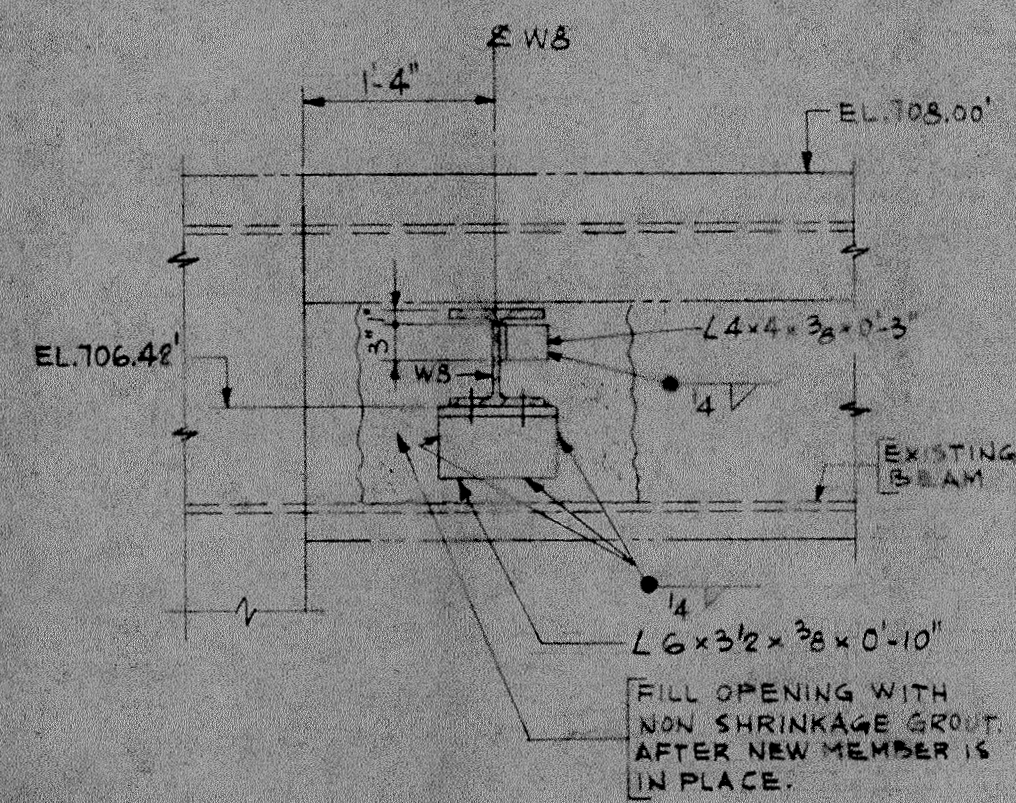
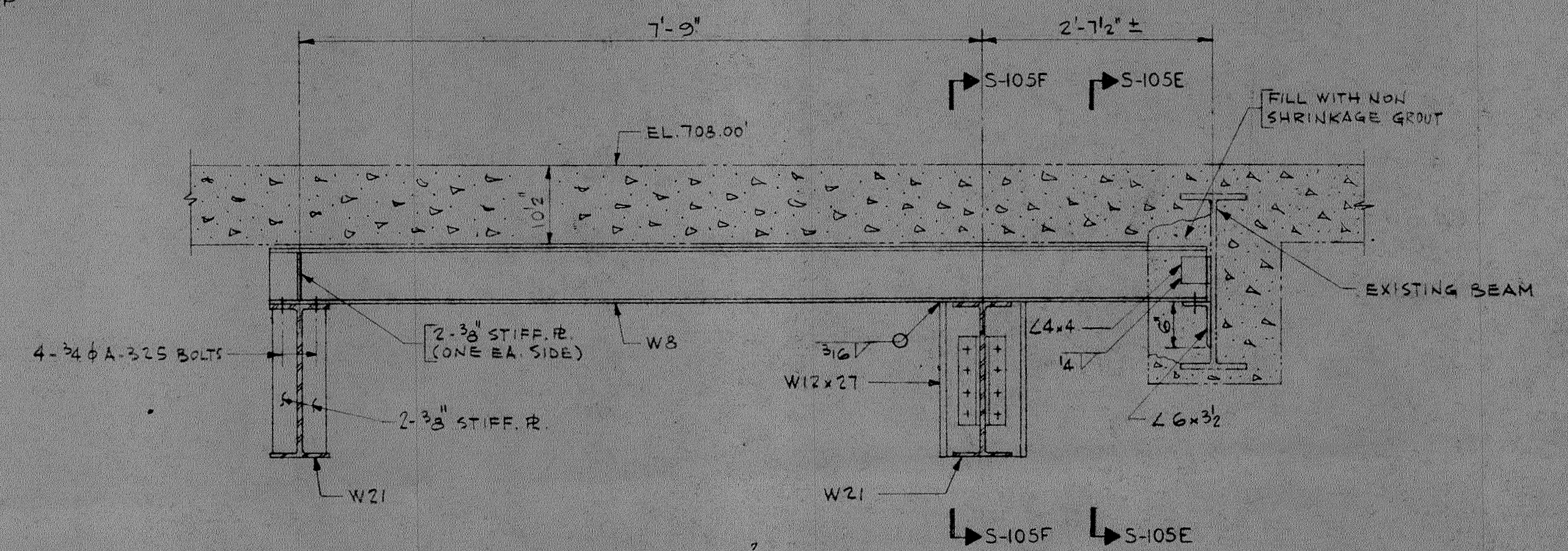
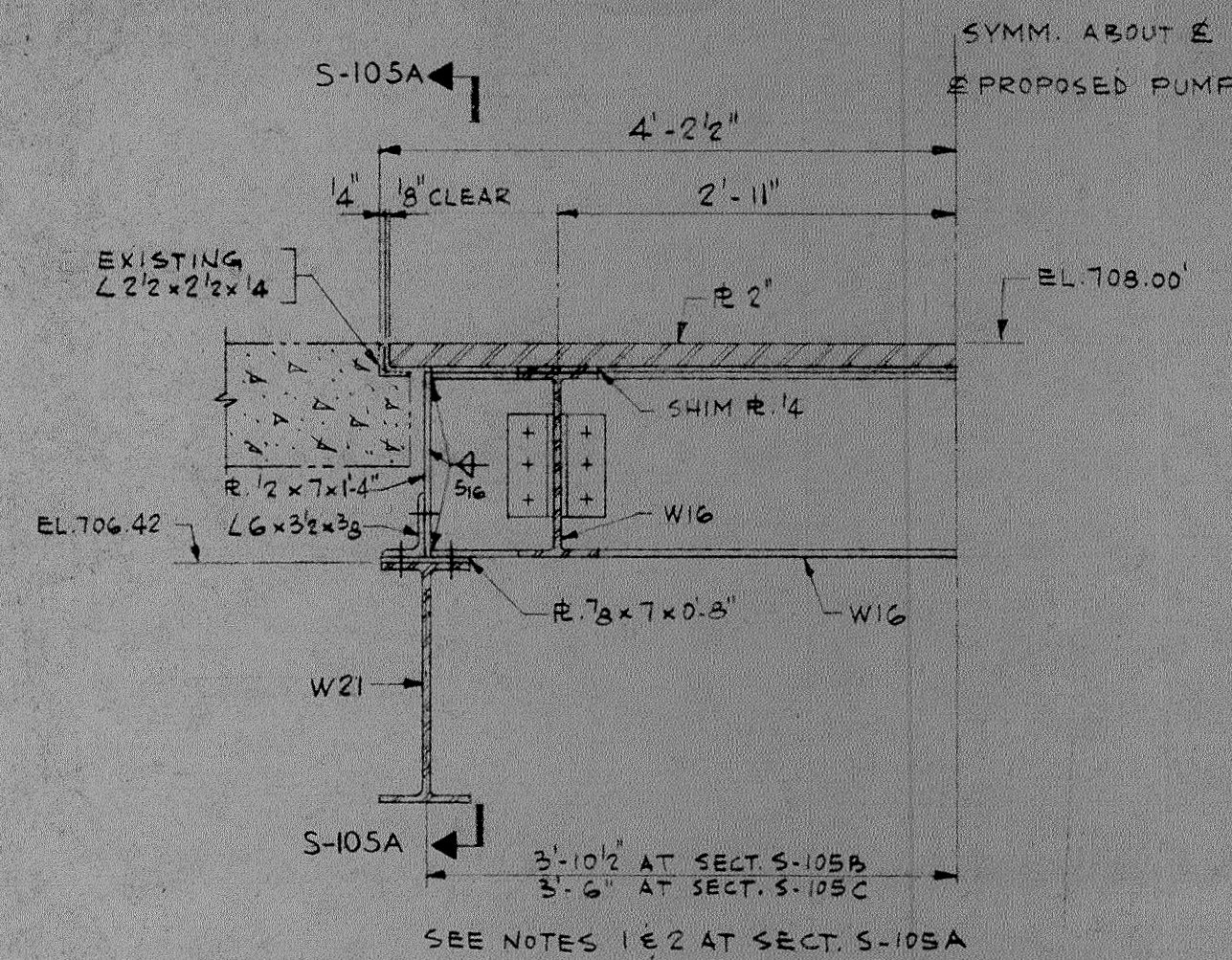
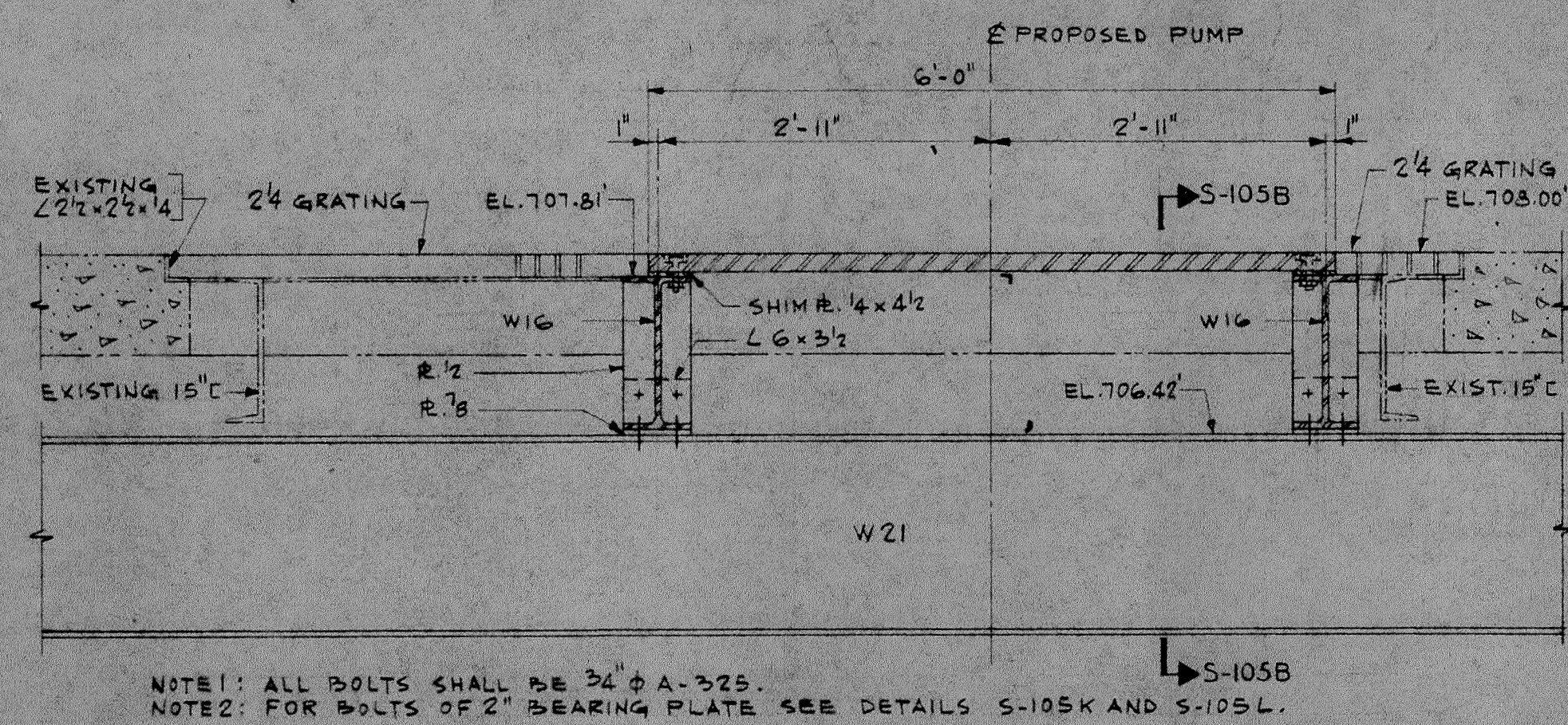


SECTION S-104H



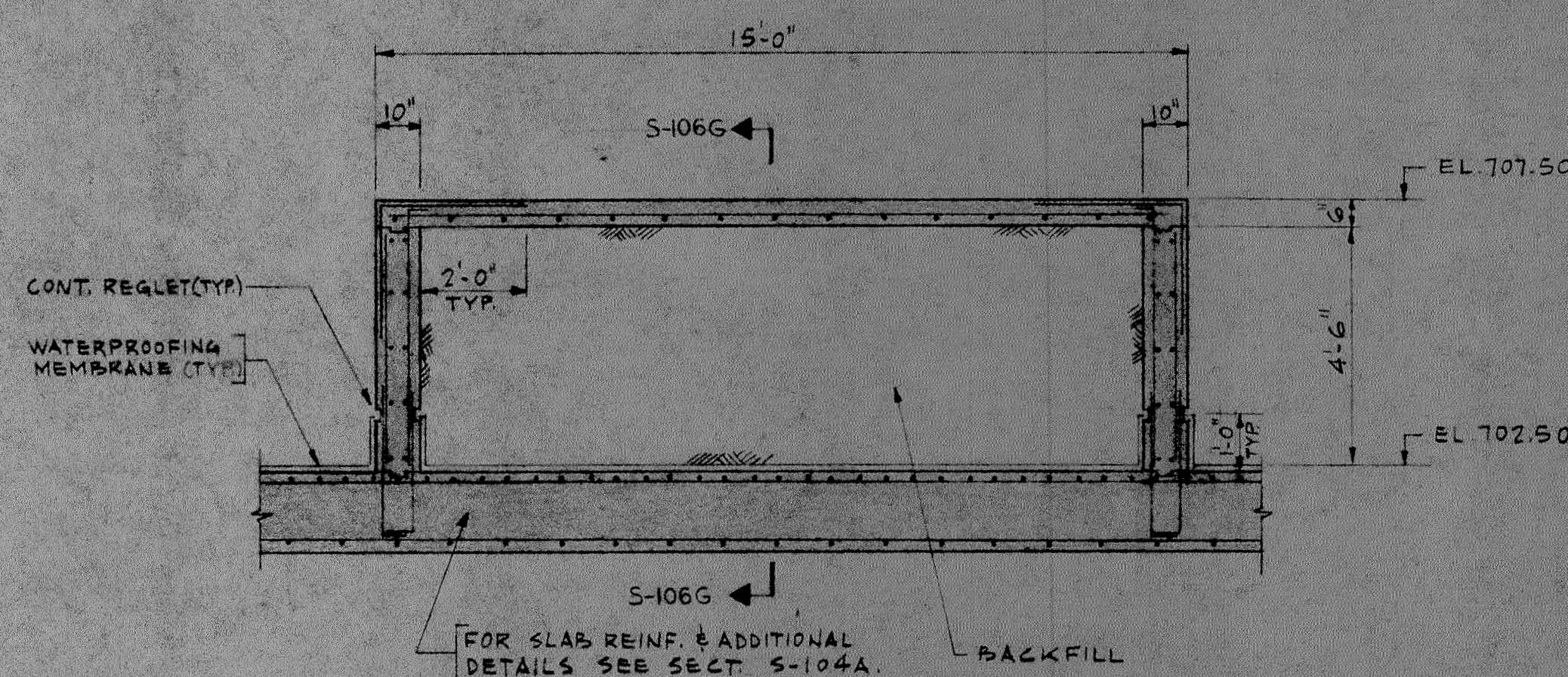
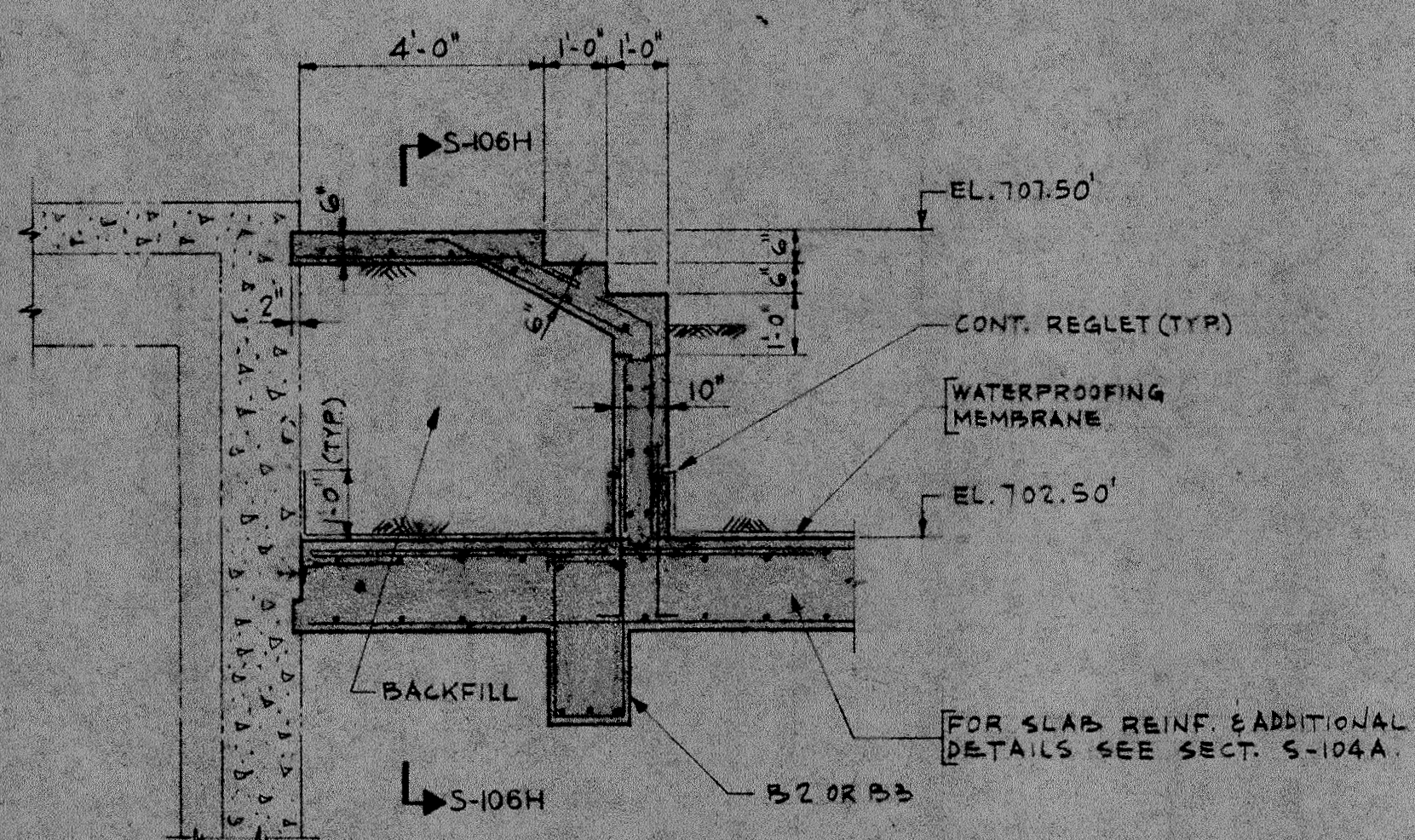
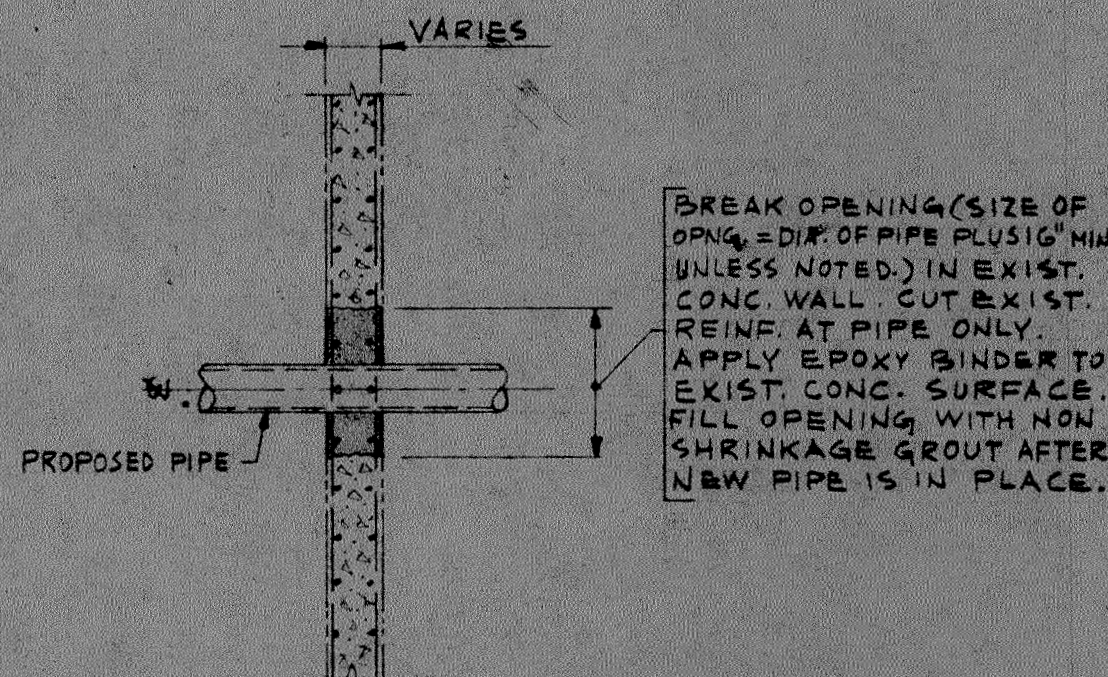
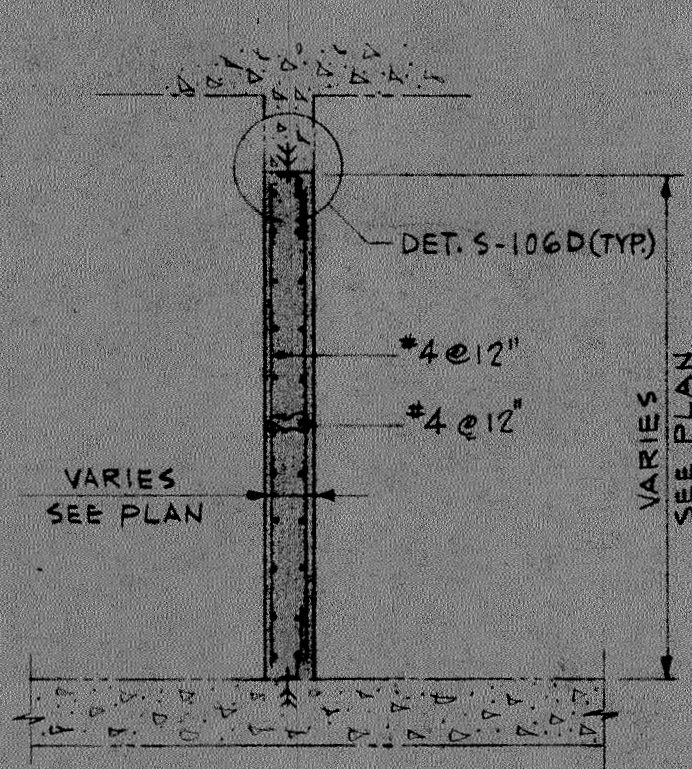
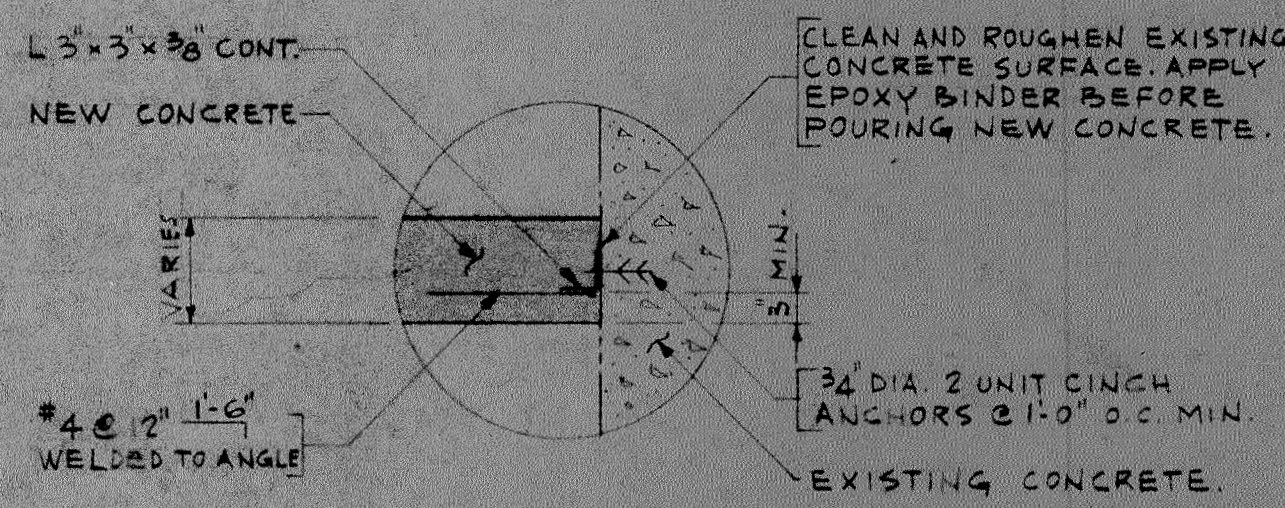
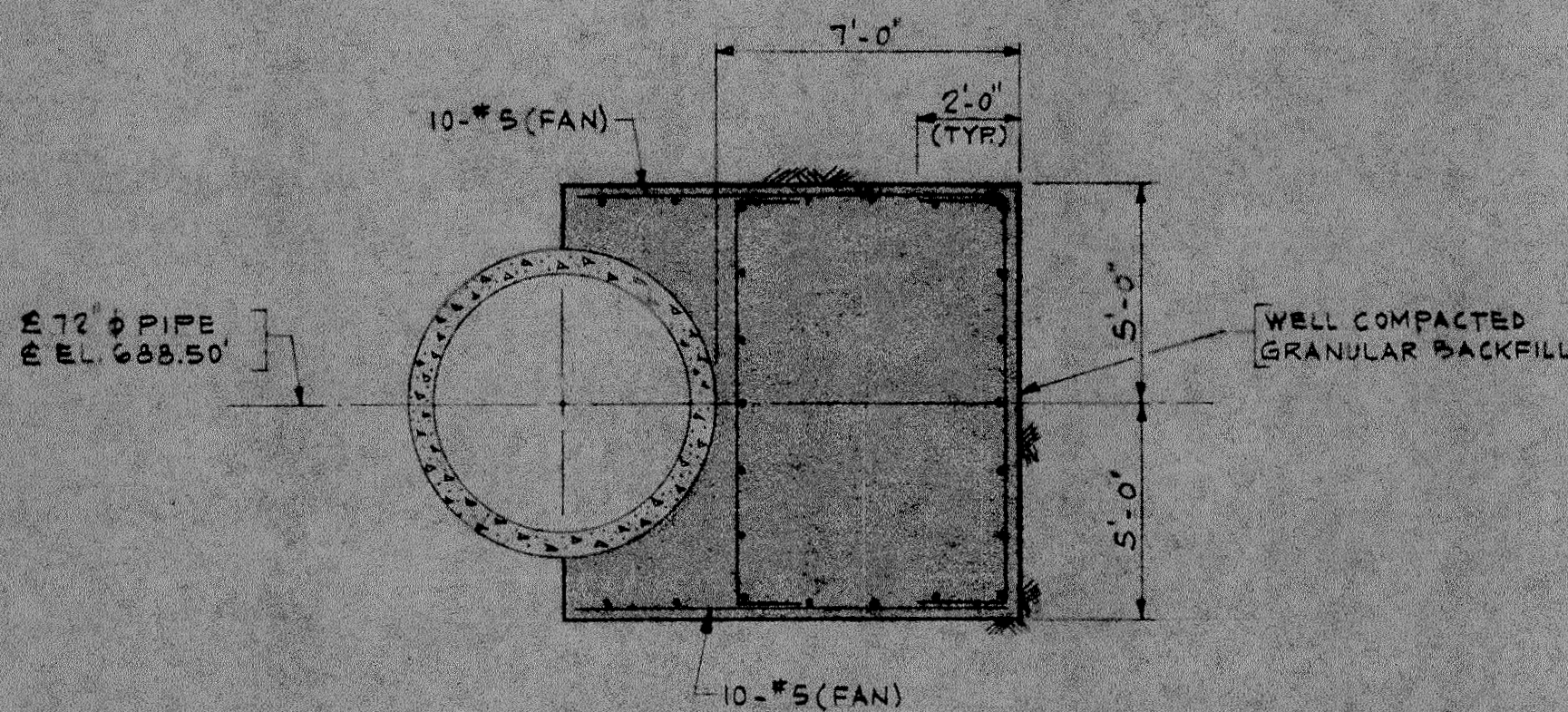
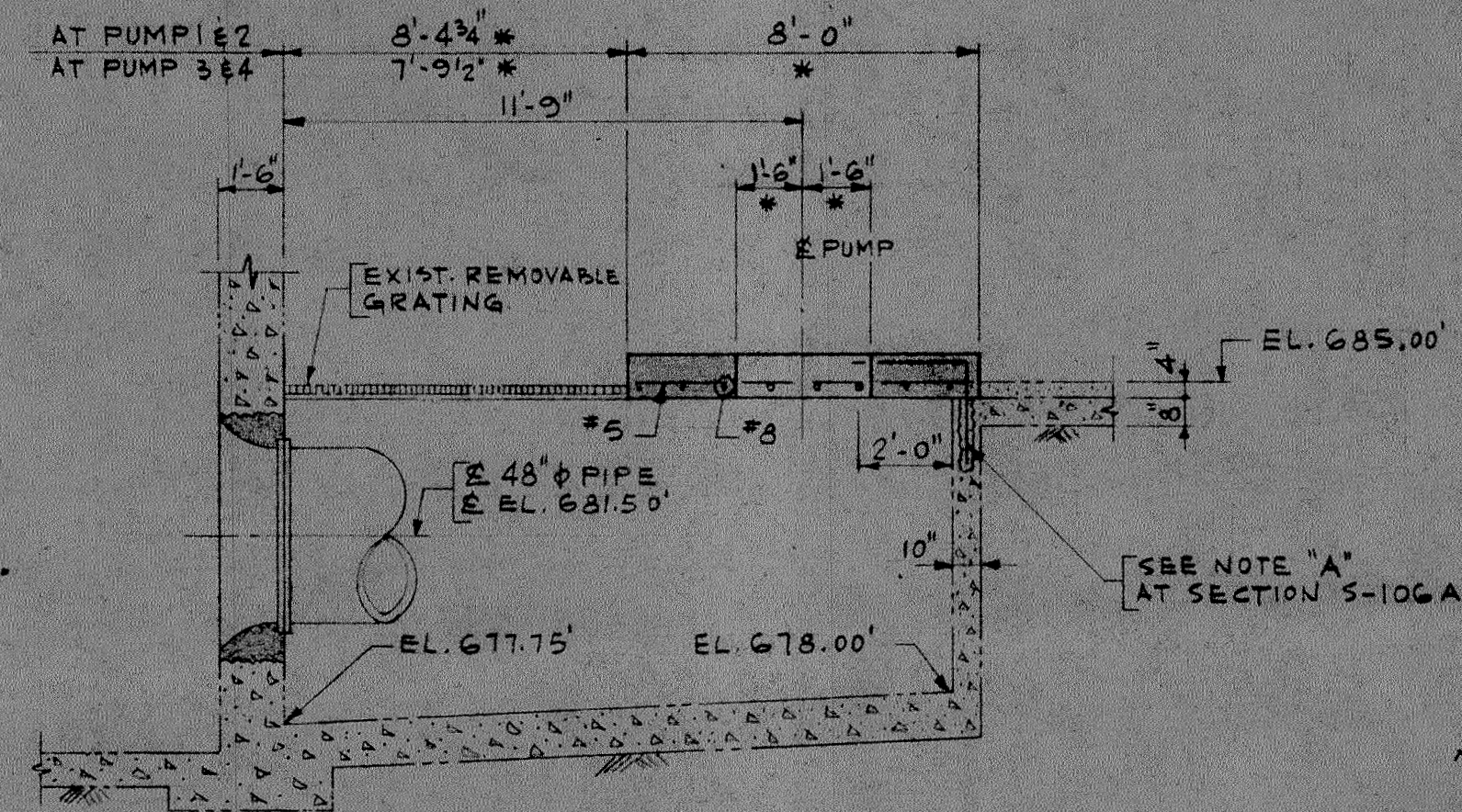
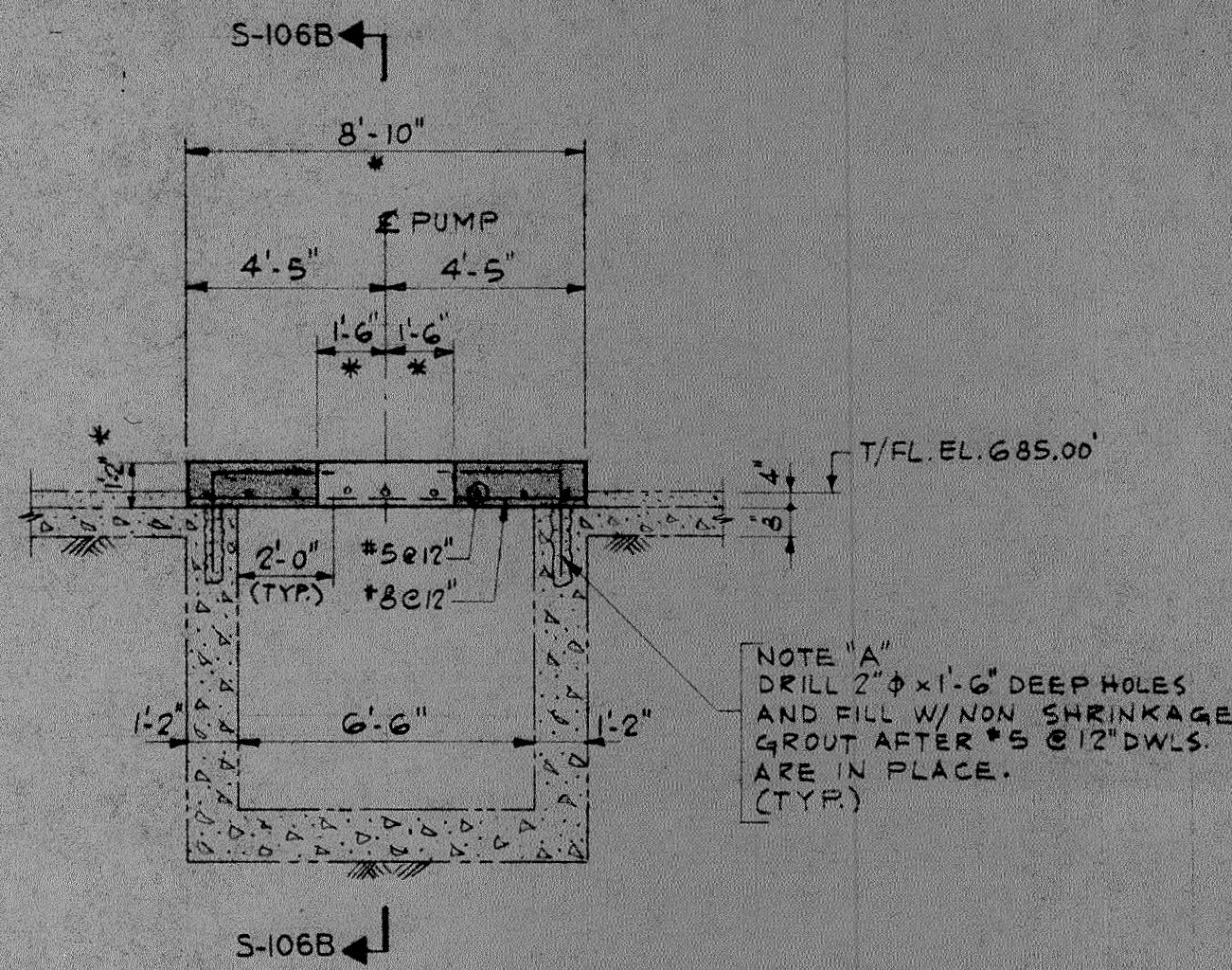
SECTION S-104K

CITY OF FLINT, MICHIGAN WATER POLLUTION CONTROL PLANT IMPROVEMENTS AND MODIFICATIONS EXISTING THIRD AVENUE PUMPING STATION SECTIONS		
DRAWN BY: V.P.	CONSOER, TOWNSEND & ASSOCIATES IN MICHIGAN CONSULTING ENGINEERS	SCALE: 1/4" = 1'-0"
CHECKED BY: R.C.		REVISED:
APPROVED BY:		SHEET NO. S-104
		OF S-116 SHEETS



PROPOSED INTERMEDIATE FLOOR BEAM SCHEDULE

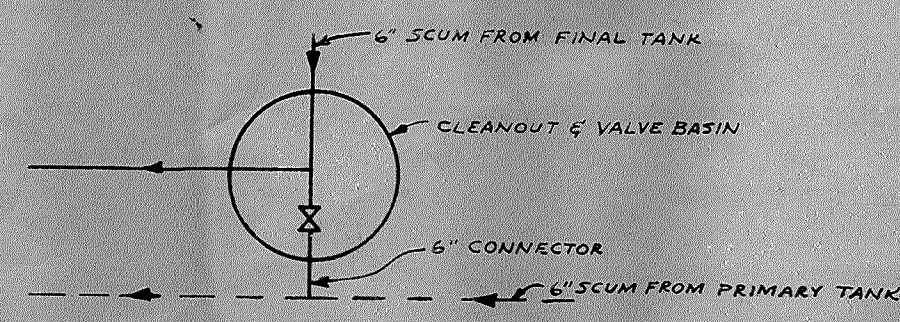
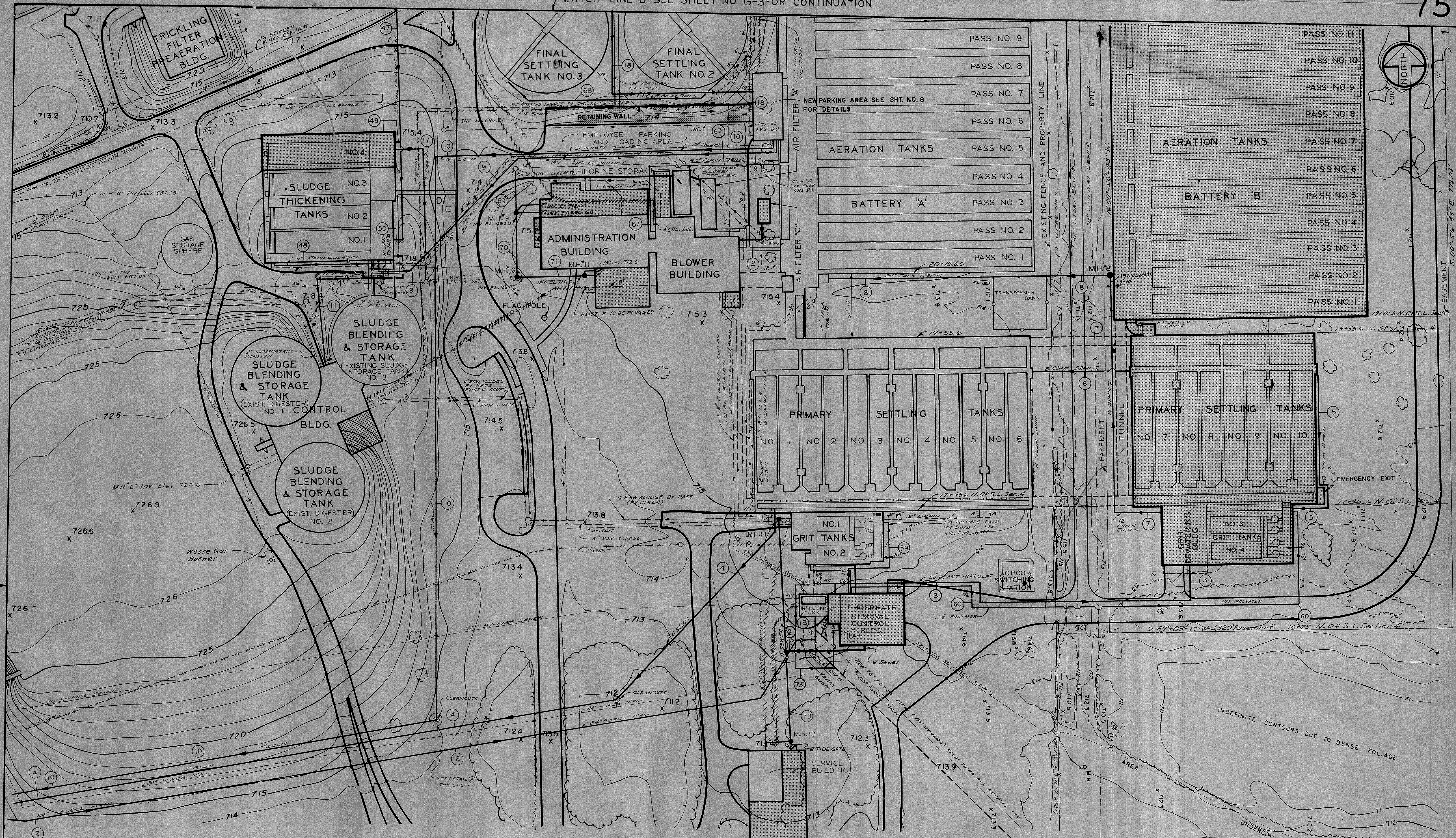
MARK	SIZE		REINFORCING BARS		STIRRUPS		REMARKS
	B	D	BOTTOM	TOP	SIZE	TYPE	
B1	16	36			#4	□	① 12" THRUOUT
B2	16	36	5-#9	3-#9 CONT.	#4	□	① 6" THRUOUT EXTEND BOTT. BARS FULL LENGTH INTO B1
B3	16	36	3-#8	2-#8 CONT.	#4	□	① 12" THRUOUT
B4	18	36	5-#9 (1ST LAYER) 2-#9 (2ND LAYER)	3-#6 CONT.	#4	□	① 12" THRUOUT SEE SECTION S-104H
B5	18	22	3-#6	3-#6 CONT.	#4	□	① 12" THRUOUT



CITY OF FLINT, MICHIGAN WATER POLLUTION CONTROL PLANT IMPROVEMENTS AND MODIFICATIONS		
EXISTING THIRD AVENUE PUMPING STATION SCHEDULE AND SECTIONS		
DRAWN BY: V.P.	CONSOER, TOWNSEND & ASSOCIATES IN MICHIGAN CONSULTING ENGINEERS	SCALE: 1/4"=1'-0" UNLESS NOTED
CHECKED BY: R.C.		REVISED:
APPROVED BY:		SHEET NO. S-106 OF 116 SHEETS

MATCH LINE 'B' SEE SHEET NO. G-3 FOR CONTINUATION

MATCH LINE 'A' SEE SHEET NO. G-5 FOR CONTINUATION



DETAIL A
6-4

NOTES:
1. FOR PIPING SCHEDULE
SEE SHEET NO. G-6
2. FOR ROADWAY LAYOUT
GRADING AND DRAINAGE
SEE SHEET NO. 8

- LEGEND
- EXISTING PIPE
 - - - PROPOSED PIPE
 - ▭ EXISTING STRUCTURE
 - ▨ PROPOSED STRUCTURE
 - ▩ TO BE ABANDONED

- EXISTING MANHOLE
- PROPOSED MANHOLE
- ⊙ CLEANOUT MANHOLE

CITY OF FLINT, MICHIGAN
WATER POLLUTION CONTROL PLANT
IMPROVEMENTS AND MODIFICATIONS
LAYOUT OF PROPOSED PLANT ADDITIONS
AND OUTSIDE PIPING

DRAWN BY: MEJ
DATE: May 1973
CHECKED BY: G.Y.K.
APPROVED BY: W.J.B.

**CONSOER, TOWNSEND
& ASSOCIATES**
IN MICHIGAN
CONSULTING ENGINEERS

SCALE:
1" = 40'-0"
REVISED:
SHEET NO. G-4
OF G-163 SHEETS
70295

