



City of Flint

Department of Purchases & Supplies

Sheldon A. Neeley

TO: All Proposers
FROM: Lauren Rowley
Purchasing Manager
DATE: **July 13, 2021**
SUBJECT: **Addendum #03** – Bid# 22000048 – WPC Third Avenue Pumping Station
Improvements

This addendum has been issued because of the following:

1. Exhibit 3 Part 2A – Additional Drawings

All other bidding terms, requirements, and conditions continue as indicated in the remaining original bid documents.

The Purchasing Manager, Lauren Rowley, is an officer for the City of Flint with respect to this RFP.

In the submission of their proposal, Proposer must acknowledge receipt of this addendum. Proposer shall acknowledge this addendum by signing and returning one copy of this notice with their submission.

Company Name: _____

Address: _____

City / State / Zip: _____

Telephone: _____ Fax: _____ Email: _____

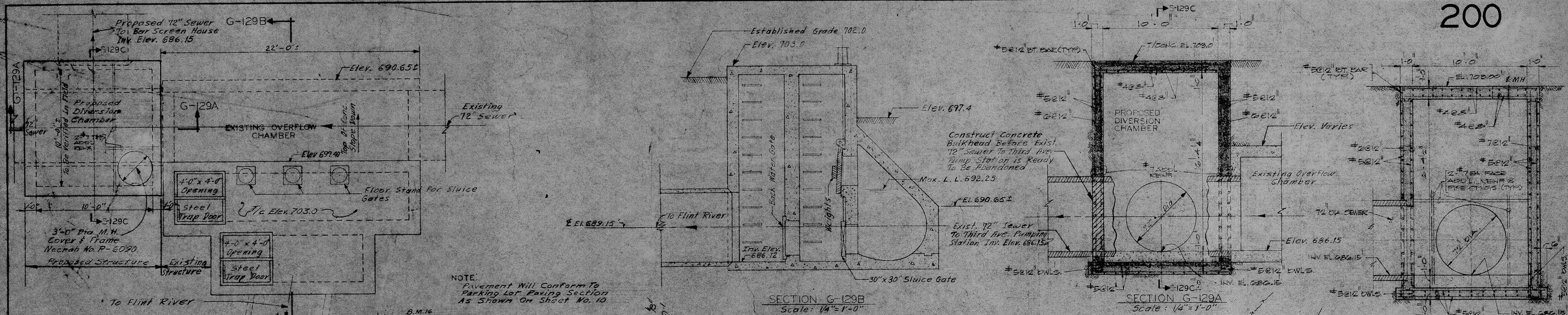
Print Name: _____ Title: _____

Signature: _____ Date: _____

Thank you,


Lauren Rowley
Purchasing Manager

Exhibit 3



DIVERSION CHAMBER PLAN

NOTE
Elevations Given Are
Relative To B.M. 16 - Top
Of Wall At North End.

NOTE:
Pavement Will Conform To
Parking Lot Paving Section
As Shown On Sheet No. 10

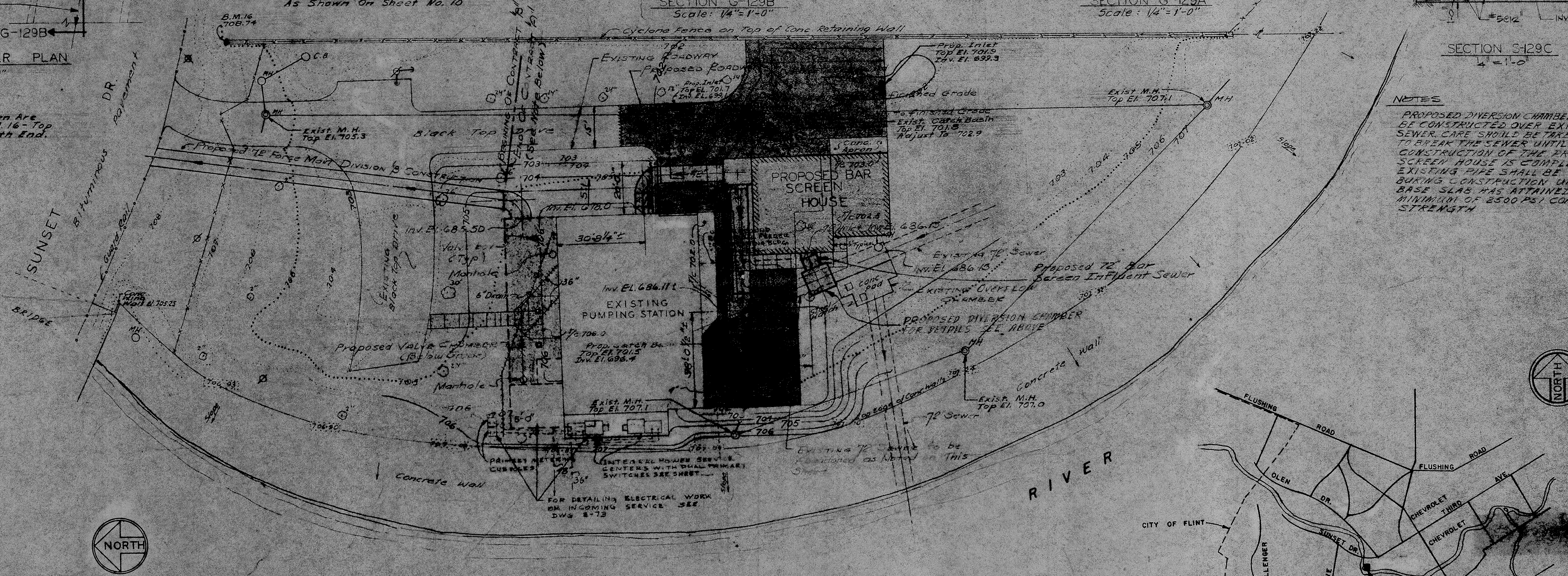
SECTION G-129B
Scale: 1/4" = 1'-0"

SECTION G-129A
Scale: 1/4" = 1'-0"

SECTION S-129C

NOTES

PROPOSED DIVERSION CHAMBER TO BE CONSTRUCTED OVER EXISTING SEWER. CARE SHOULD BE TAKEN NOT TO BREAK THE SEWER UNTIL CONSTRUCTION OF THE PROPOSED SCREEN HOUSE IS COMPLETED. EXISTING PIPE SHALL BE SHORED DURING CONSTRUCTION UNTIL BASE SLAB HAS ATTAINED A MINIMUM OF 2500 PSI COMPRESSIVE STRENGTH.



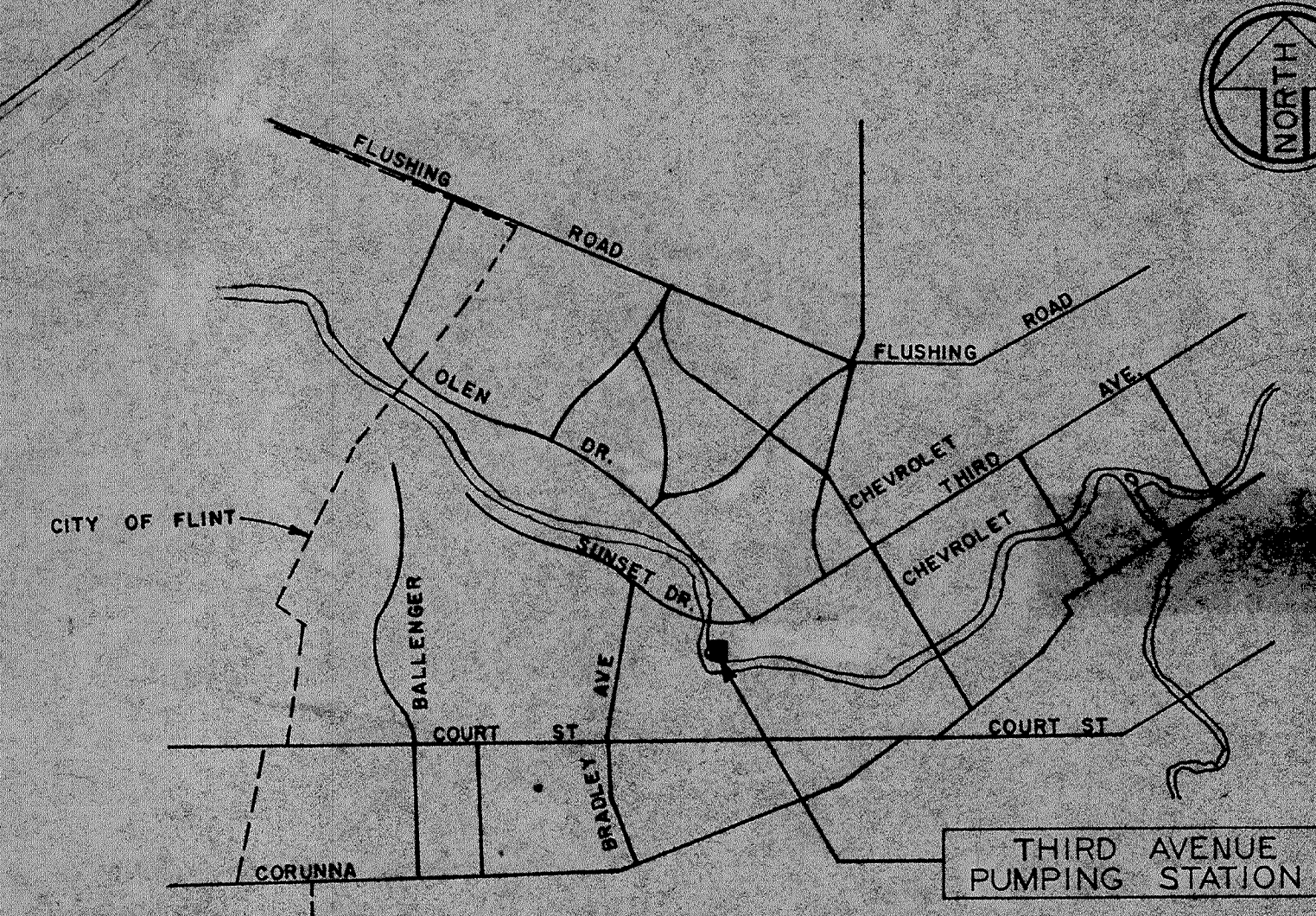
NOTE: Sidewalks To Be Sealed Transversely At 5'-0" Intervals Or As Noted On Plans. Provide 1/2" Expansion Joints At 30'-0" Intervals Between New And Existing Walks And Where Walks Are Adjacent To Building Or As Shown On Plans. Slope Walk 1/8" Per Foot In Direction Of Drainage.

LEGEND

EXIST. CONTOURS
PROP. CONTOURS
EXIST. M.H.
EXIST. CATCHBASIN
PROP. CATCHBASIN
PROP. INLET
PROP. CONC. WALK
PROP. ASPHALT PVT

Scale: 1" = 20'-0"

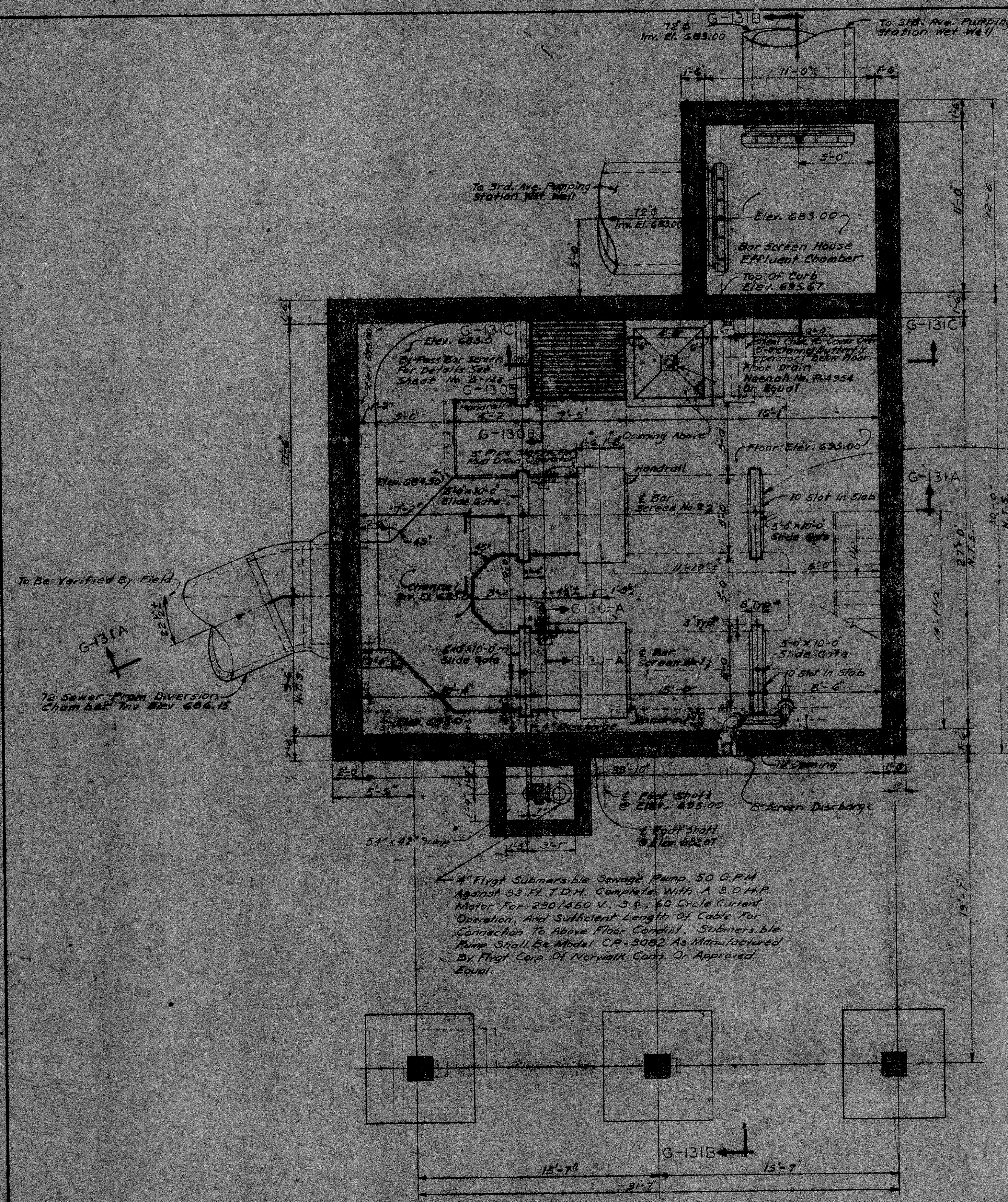
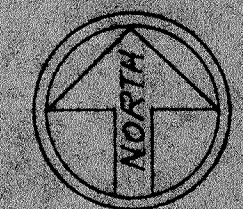
NOTE.
701 Indicates Grade



CITY OF FLINT, MICHIGAN
WATER POLLUTION CONTROL PLANT
IMPROVEMENTS AND MODIFICATIONS

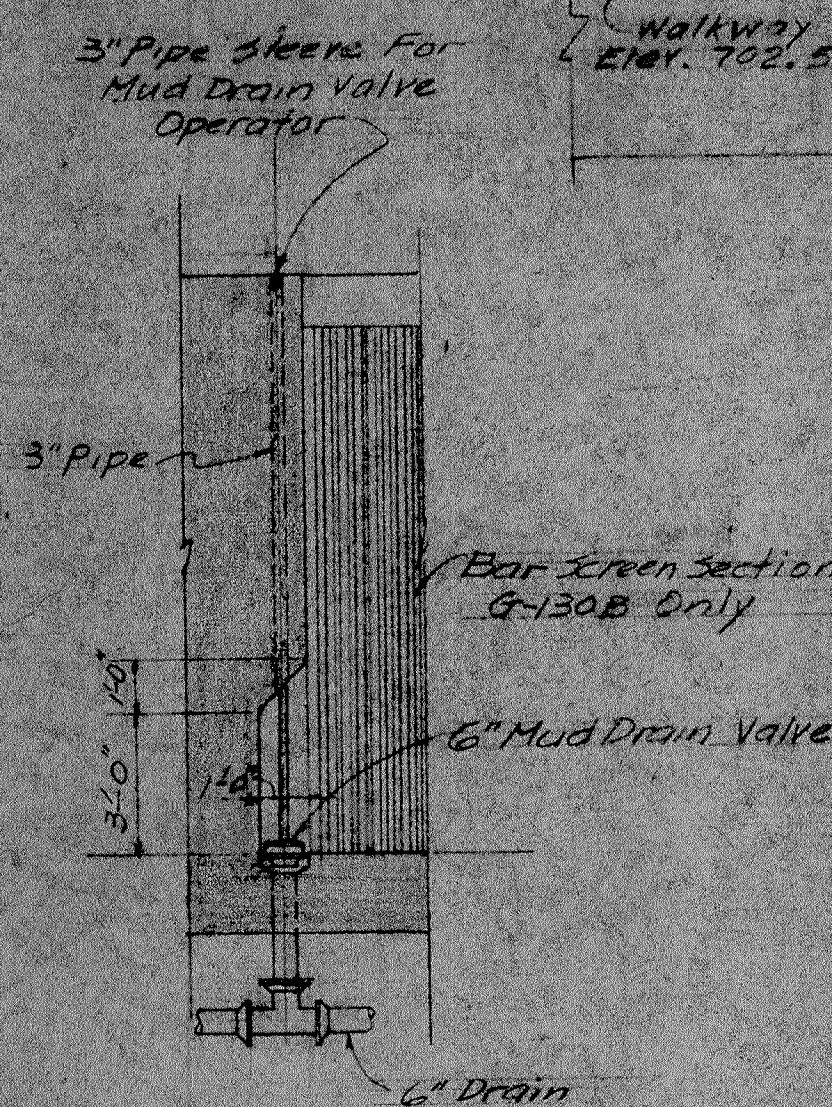
EXISTING THIRD AVENUE PUMPING STATION
SITE - PLAN

DRAWN BY: <i>C.S.</i>	CONSOER, TOWNSEND & ASSOCIATES IN MICHIGAN CONSULTING ENGINEERS	SCALE: <i>As Shown</i>
DATE: <i>May 1973</i>		REVISED:
CHECKED BY: <i>G. Y. K.</i>		
APPROVED BY: <i>W. J. B.</i>		SHEET NO. <i>G-429</i> OF <i>G-183</i> SHEETS

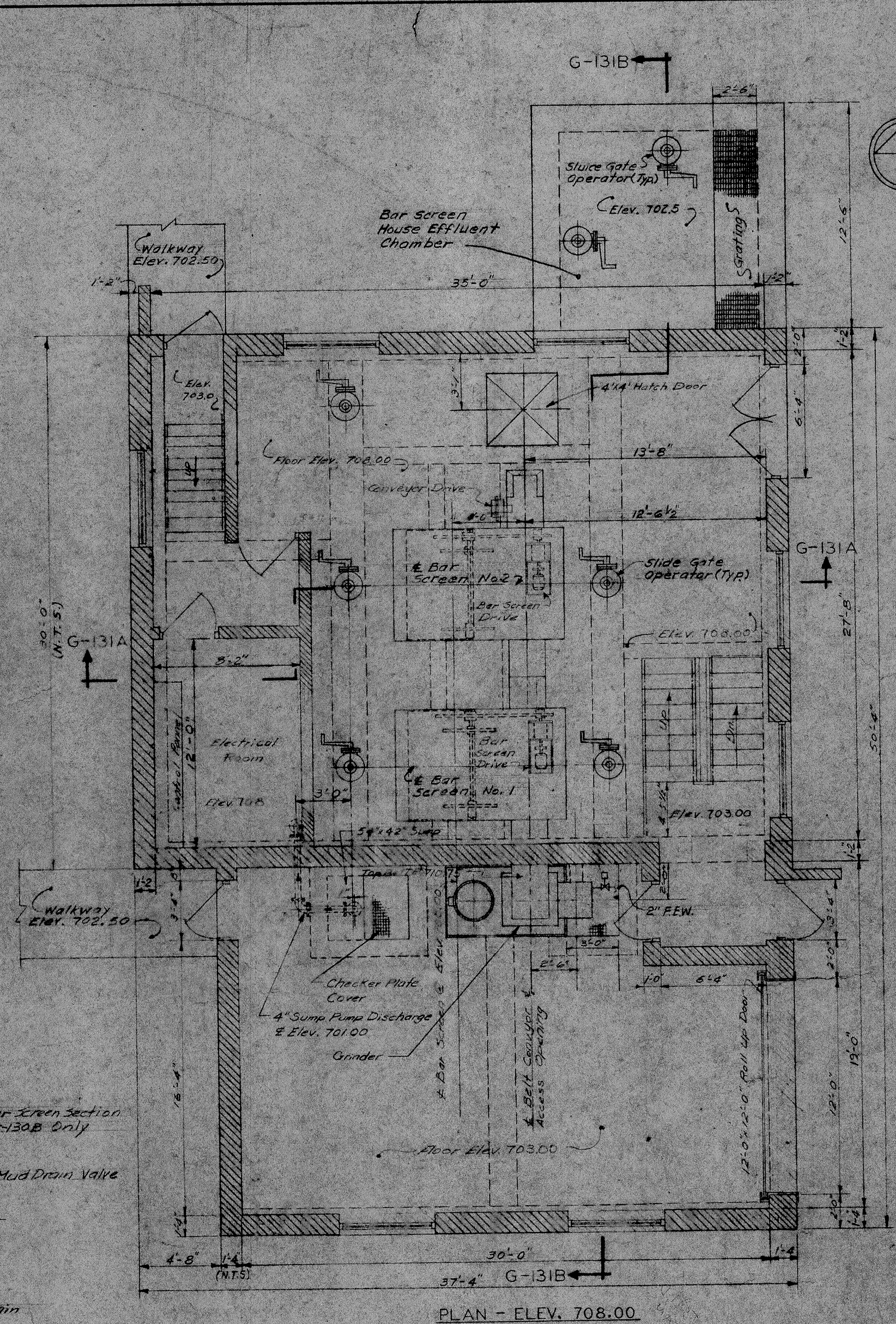


PLAN - EL. 695.00

Note:
* Final Dimension To Be
Determined By Manufacture

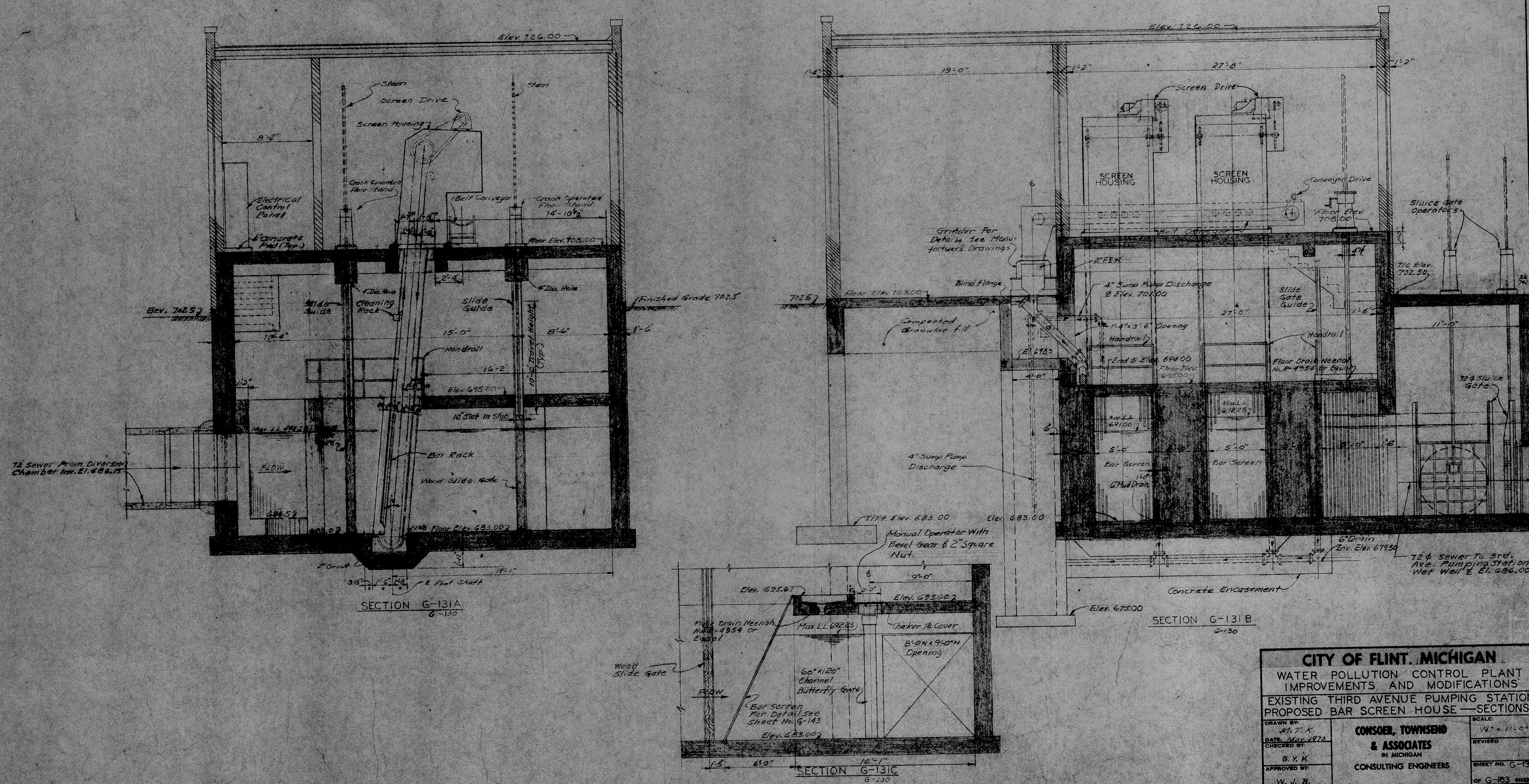


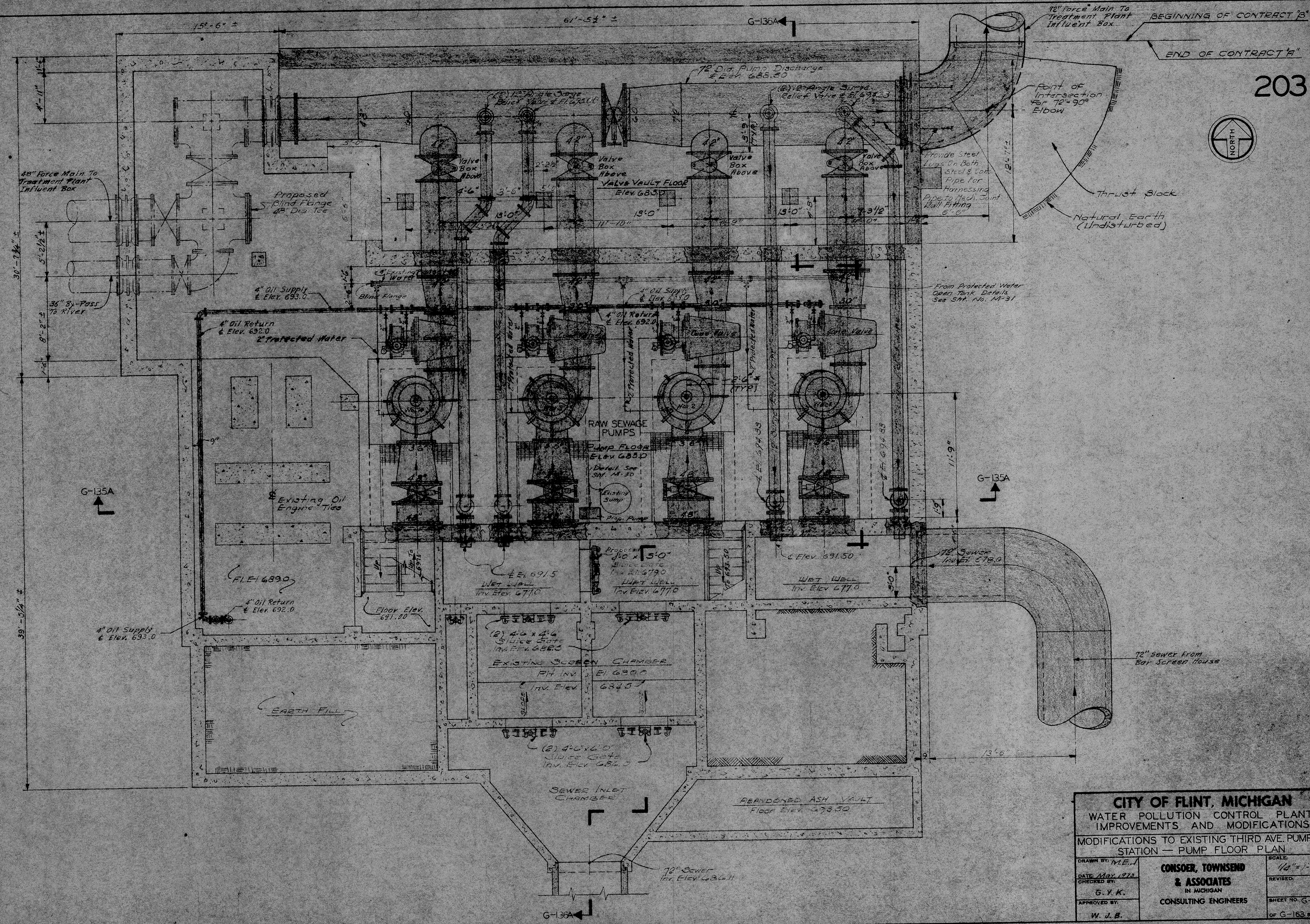
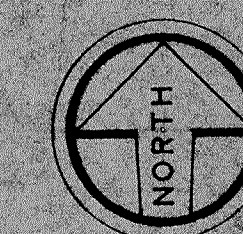
SECTION G-130-A
G-130-B



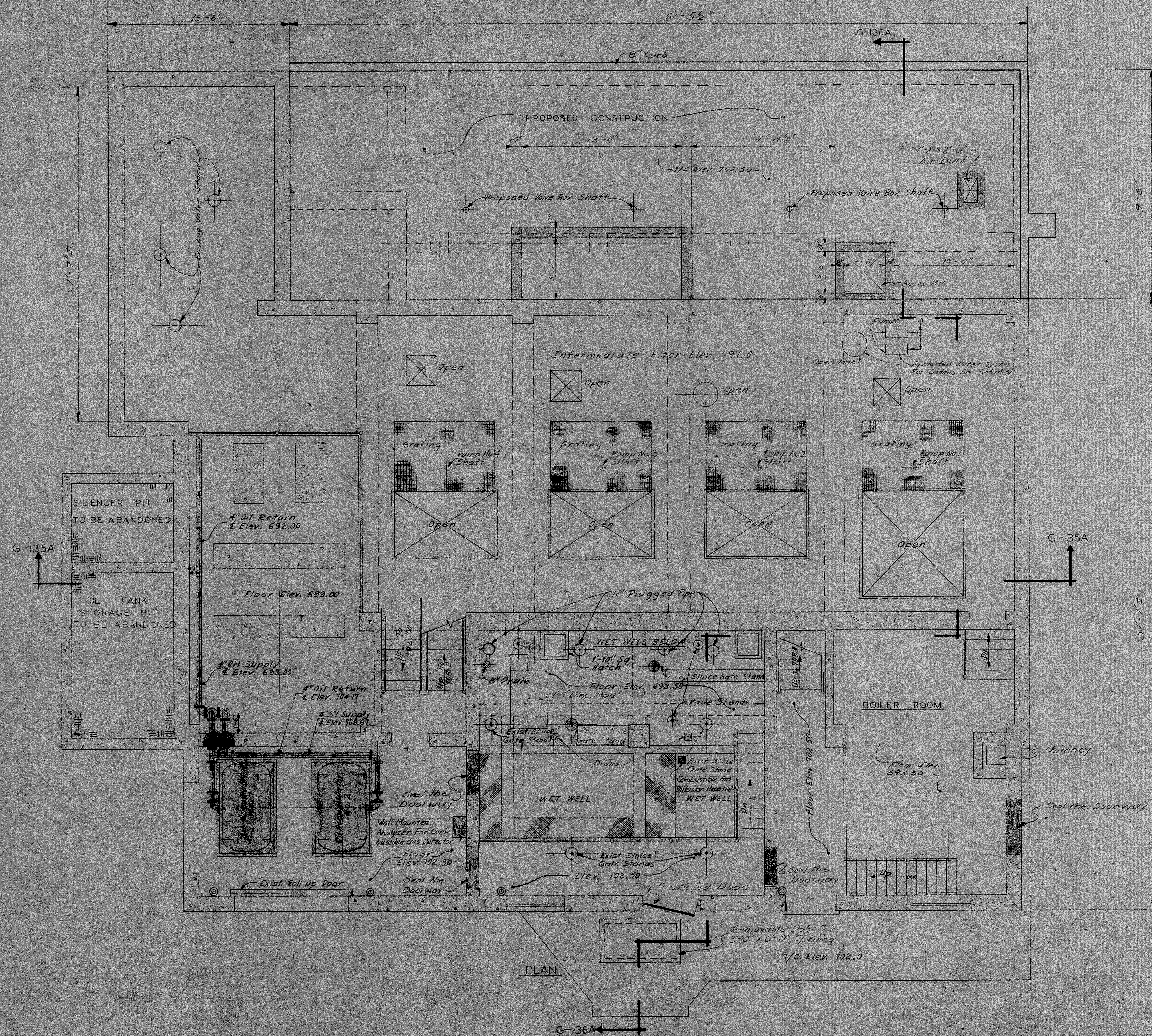
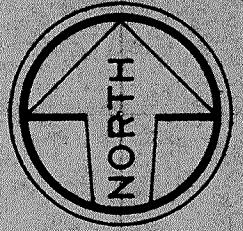
PLAN - ELEV. 708.00

CITY OF FLINT, MICHIGAN			
WATER POLLUTION CONTROL PLANT IMPROVEMENTS AND MODIFICATIONS			
EXISTING THIRD AVENUE PUMPING STATION			
PROPOSED BAR SCREEN HOUSE - PLAN			
DRAWN BY: M. T. K.	CONSOER, TOWNSEND & ASSOCIATES IN MICHIGAN CONSULTING ENGINEERS	SCALE: 1/4" = 1'-0"	SHEET NO. G-130 OF G-130
CHECKED BY: G. Y. K.		REVISION:	
APPROVED BY: W. J. B.			
DATE: May 1973			

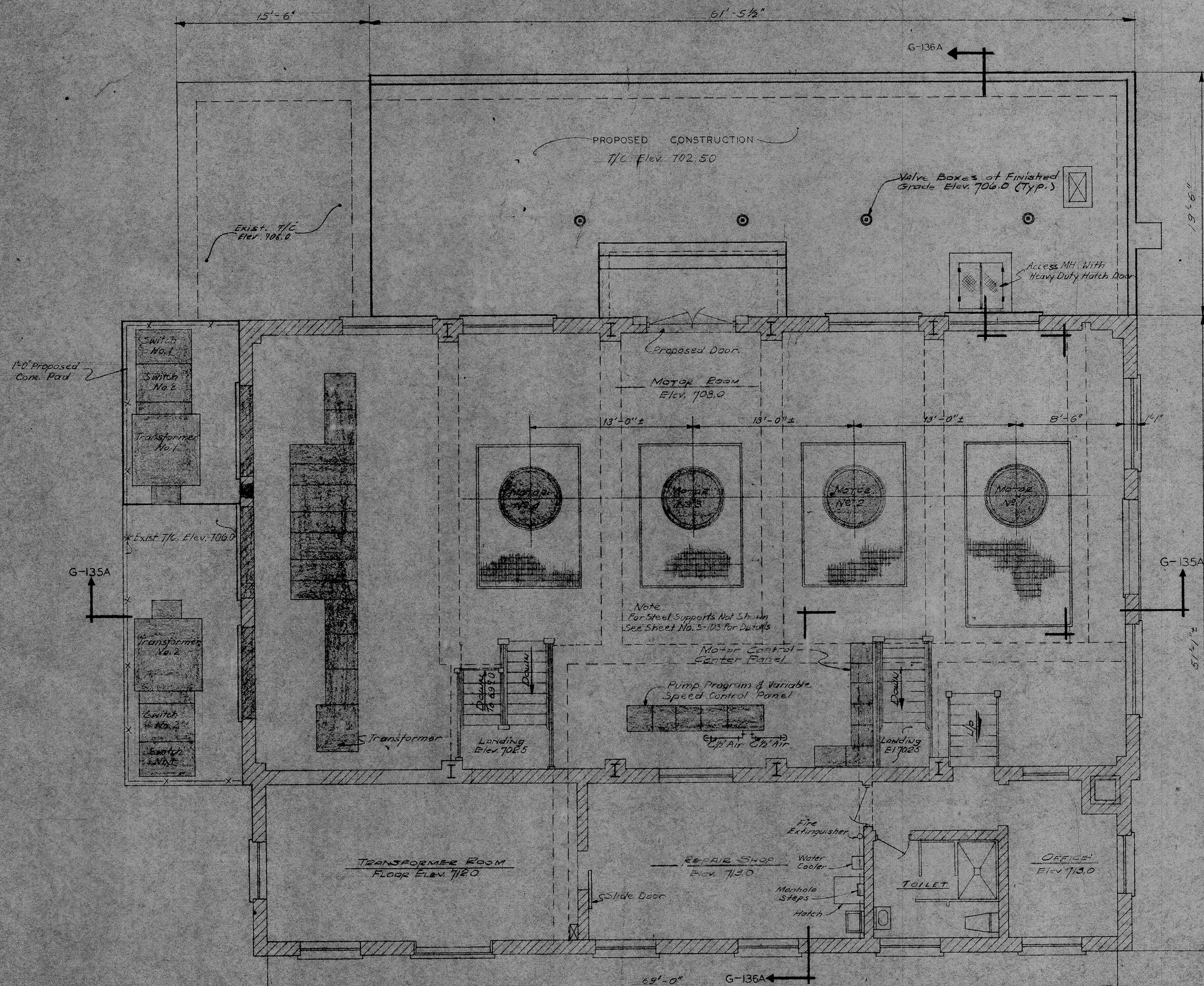
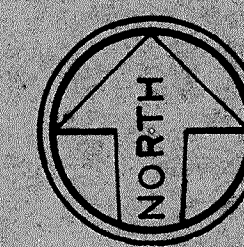




CITY OF FLINT, MICHIGAN WATER POLLUTION CONTROL PLANT IMPROVEMENTS AND MODIFICATIONS MODIFICATIONS TO EXISTING THIRD AVE. PUMPING STATION — PUMP FLOOR PLAN			
DRAWN BY: M.E.H. DATE: May 1973 CHECKED BY: G.V.K. APPROVED BY: W.J.B.	CONSOER, TOWNSEND & ASSOCIATES IN MICHIGAN CONSULTING ENGINEERS	SCALE: 1/8" = 1'-0" REVISED: SHEET NO. G-132 OF G-163 SHEETS	

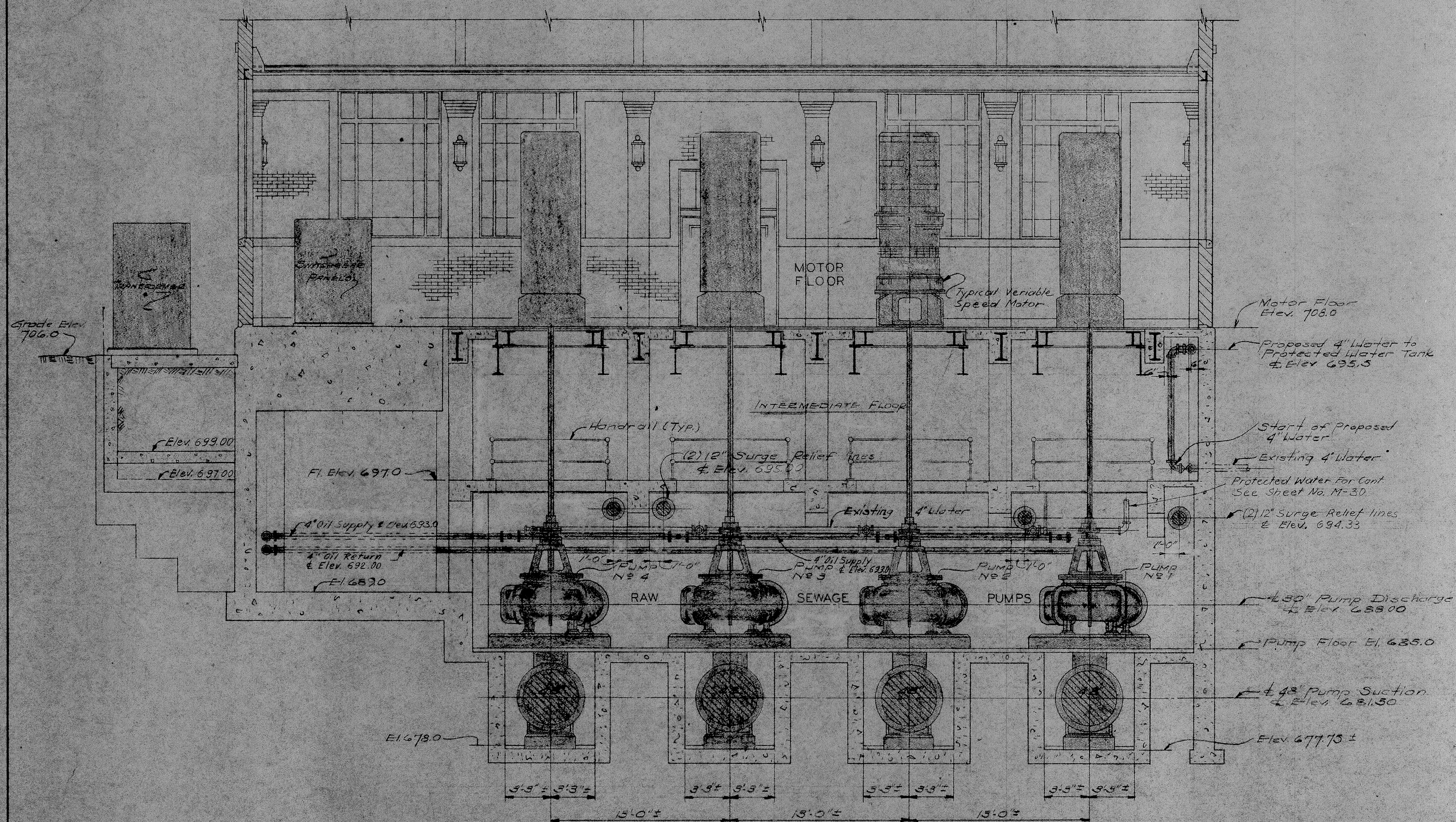


CITY OF FLINT, MICHIGAN			
WATER POLLUTION CONTROL PLANT			
IMPROVEMENTS AND MODIFICATIONS			
MODIFICATIONS TO EXISTING THIRD AVENUE			
PUMPING STATION—INTERMEDIATE FLOOR PLAN			
DRAWN BY: ME-L	SCALE: 1/4"=1'-0"	REVISIONS:	
DATE: May 1973			
CHECKED BY: G. Y. K.			
APPROVED BY: W. J. E.			
CONSOER, TOWNSEND & ASSOCIATES IN MICHIGAN CONSULTING ENGINEERS		SHEET NO. G-133 OF G-163 SHEETS	



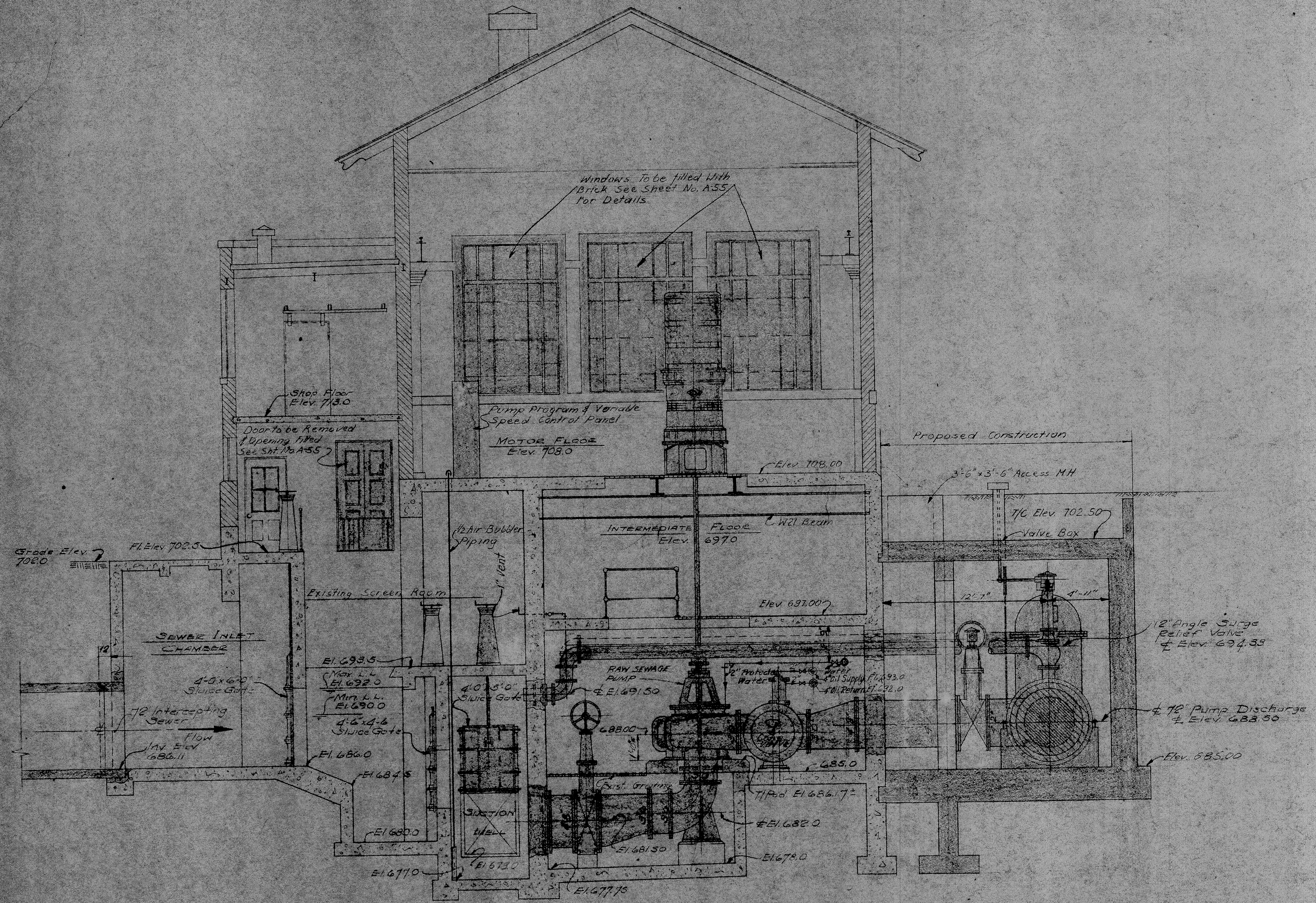
PLAN

CITY OF FLINT, MICHIGAN WATER POLLUTION CONTROL PLANT IMPROVEMENTS AND MODIFICATIONS MODIFICATIONS TO EXISTING THIRD AVE. PUMPING STATION-MOTOR FLOOR PLAN		
DRAWN BY: M.E.J. DATE: May 1973 CHECKED BY: G.Y.K. APPROVED BY: W.J.B.	CONSOER, TOWNSEND & ASSOCIATES IN MICHIGAN CONSULTING ENGINEERS	SCALE: 1/4" = 1'-0" REVISED: SHEET NO. G-134 OF G-163 SHEETS



SECTION G-135A
G-132, G-133, G-134

CITY OF FLINT, MICHIGAN			
WATER POLLUTION CONTROL PLANT			
IMPROVEMENTS AND MODIFICATIONS			
MODIFICATIONS TO EXISTING THIRD AVENUE			
PUMPING STATION - SECTION			
DRAWN BY: M.E.	CONSOER, TOWNSEND	SCALE: 1/4"=1'-0"	REVISION:
DATE: May, 1973	& ASSOCIATES	IN MICHIGAN	SHEET NO. G-13
CHECKED BY: G.Y.K.	CONSULTING ENGINEERS		OF G-163 SHEET
APPROVED BY: W.J.B.			



SECTION G-136A
6-132, 6-133, 6-134

CITY OF FLINT, MICHIGAN		
WATER POLLUTION CONTROL PLANT IMPROVEMENTS AND MODIFICATIONS		
MODIFICATIONS TO EXISTING THIRD AVENUE PUMPING STATION — SECTION		
DRAWN BY: J.T.E.	SCALE: 1/4" = 1'	CONSOER, TOWNSEND & ASSOCIATES IN MICHIGAN CONSULTING ENGINEERS
DATE: May 1973	REVISION:	
CHECKED BY: G. Y. K.	SHEET NO. 6	
APPROVED BY: W. J. B.	OF 153	