

7 NEW PLAYGROUNDS IN 12 MONTHS

FLINT PARK LAKE



MAX BRANDON PARK



LONGWAY PARK



MOTT PARK



f STAY CONNECTED!
@COFParksRec
#ISupportFlintParks

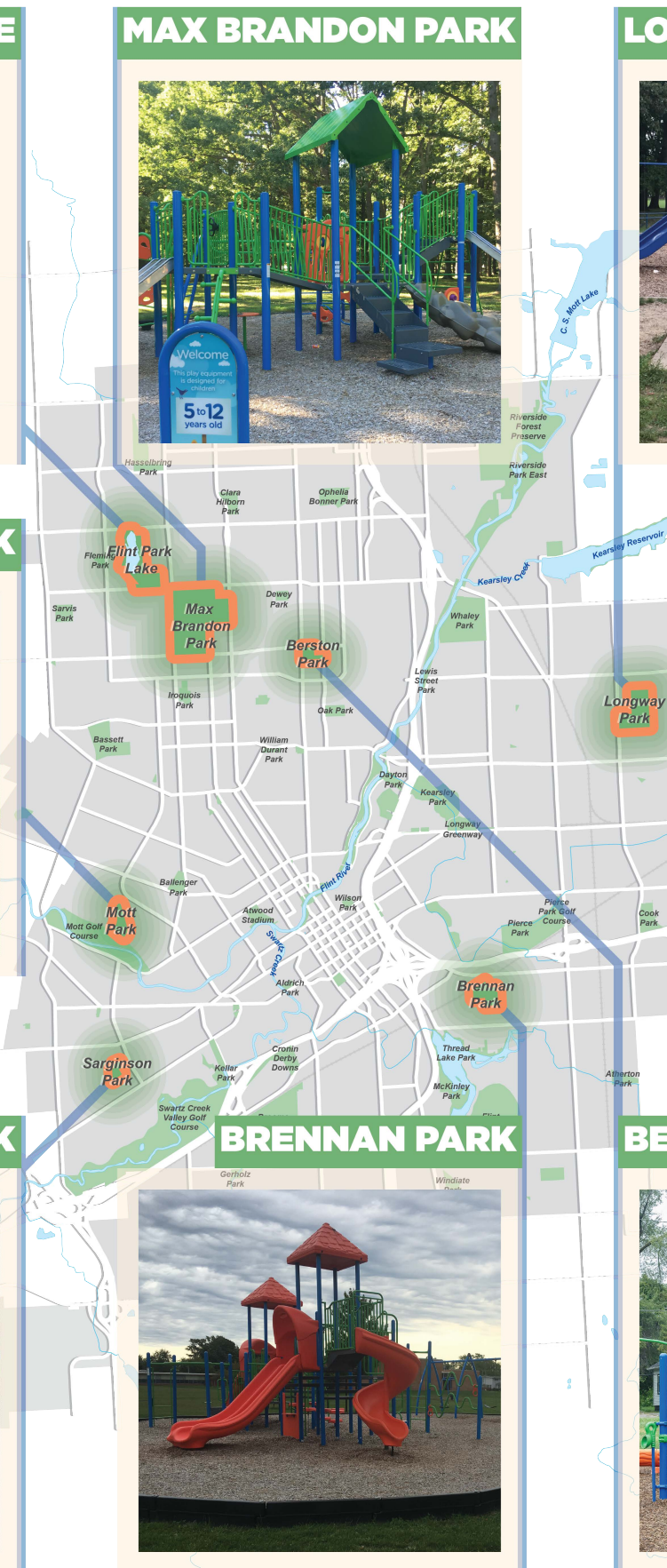
SARGINSON PARK



BRENNAN PARK



BERSTON PARK



\$400,000+
INVESTED FROM GRANTS
3,000+ HOURS
OF VOLUNTEERS' TIME

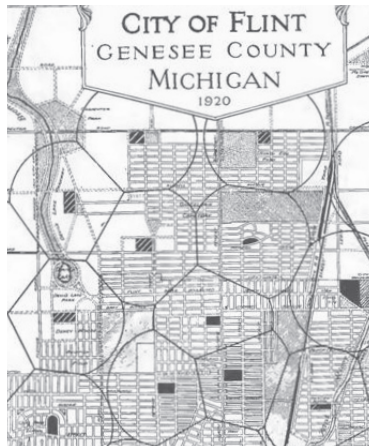
**THANK
YOU**

**TO ALL OF OUR
PARTNERS,
FUNDERS, &
VOLUNTEERS**

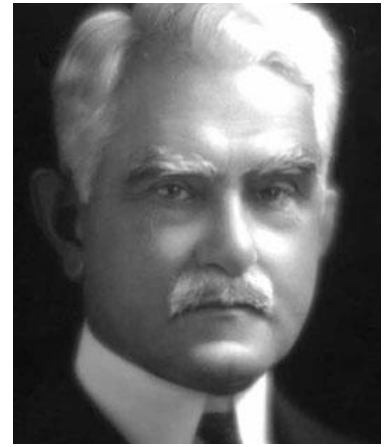
2016 CITY OF FLINT PARKS & RECREATION QUICK FACTS

HISTORY

The Flint Parks system was laid out by John Nolen in the 1920 City of Flint plan and included small parks and play lots within a five to eight-minute walk (1/4 mile) of each residential area, as well as large city parks connected by a series of park circuit drives to create continuous pleasant boulevards throughout the city.



J. Dallas Dort, a carriage maker and auto pioneer, was instrumental in developing the parks system by creating a parks board, providing financial support, and donating land for parks. Due to Dort's leadership, the City of Flint adopted an ordinance to name the parks system "J. Dallas Dort Memorial Park Systems."



ASSETS: 1,881 total acres; 70 recreational facilities

27
MINI PARKS /
PLAYLOTS

14
NEIGHBORHOOD
PARKS

16
COMMUNITY
PARKS

5
LARGE URBAN
PARKS

4
SPECIAL USE
PARKS & TRAILS

4
HISTORIC GOLF
COURSES



Mann Hall Park



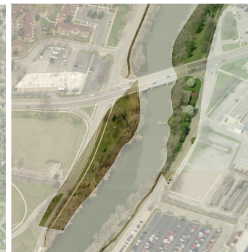
Berston Park



Bassett Park



Kearsley Park



Flint River Trail



Swartz Creek Golf Course

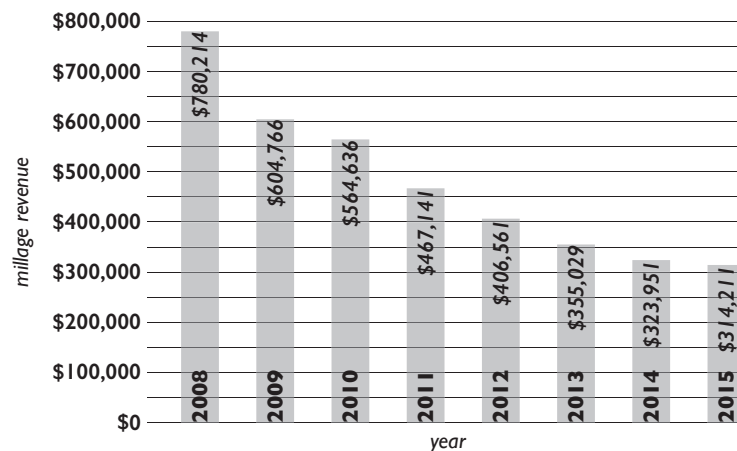
STAFFING: City of Flint Parks & Recreation Department Full-Time Equivalent (FTE) Government Employees

	2003	2004	2005	2006	2007	2008	2009	2010	2011	2012	2013	2014	2015	2016
Administration	4	5.5	16	12	14	16	11	7	6	4	2	1*	.75*	.75*
Facilities Maintenance/Grounds	8	31	24	30	27	13	13	11	9	2	4	0	0	0
Forestry Division	17.6	9	3	7	12	10	3	3	3	2	0	0	0	0
Golf Division	41	18	27	24	22	25.7	7	16	12	0	0	0	0	0
Recreation Division	26.9	0	0	0	0	0	0	0	0	4	0	0	0	0
IMA Sports Arena	0	0	0	0	0	0	0	0	0	0	0	0	0	0
Total FTE Employees	97.5	63.5	70	73	75	64.7	34	37	30	12	6	1*	.75*	.75*

* Figure represents a combination of part-time hours spent by three Planning & Development employees. While all of these individuals are full-time government employees, Parks and Recreation Administration represents only a portion of their responsibilities with the City. Parks and Recreation does not currently have any staff members whose sole responsibility is Parks and Recreation Administration.

FUNDING

Providing even the most basic of services in our parks is costly and the revenue brought in by our millage has been in steady decline since it was first created in 1996. Our current millage ends in 2016 and will be up for a renewal on the November 2016 ballot. As this graph shows, millage revenue has decreased 60% in the last seven years, a total decrease of \$466,000.



Note: amounts provided in this graph are actual reported property tax revenue that was received after subtracting delinquent taxes or payments that were not received.

